

# Traffic Guidance Scheme

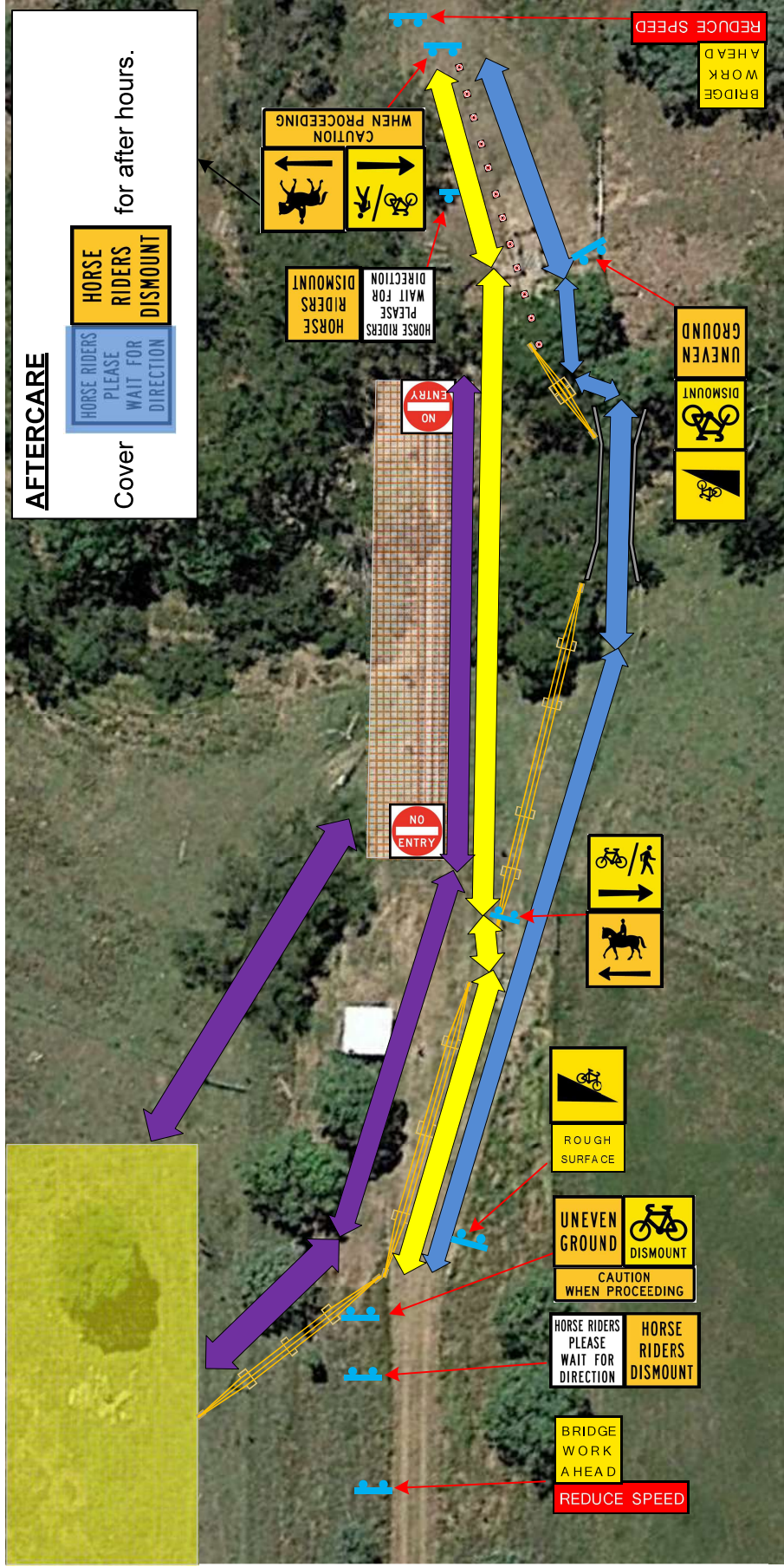
## Coal Creek Bridge Rehabilitation

Brisbane Valley Rail Trail – Bridge 11 (BVRT11)



### Symbol Legend

- Work zone
- Site Compound
- Walker/Cyclist ONLY bridge
- Horse side track
- Plant/Vehicle Movement
- Walker/cyclist side track
- Fenced off Site Area
- Sign post/frame
- Cones/Flagging Rope



### Drawing Not To Scale

**Project:** Coal Creek Bridge Rehabilitation  
**Job#:** 7013427  
**Prepared By:**  
**Rev#:** D  
**Chainage:** Brisbane Valley Rail Trail – CH 73.64km  
**Date:** 24/09/21

**Approved:**  
 (Signature)

- Comments:**
1. This Traffic Movement Plan was developed for implementation. At Coal Creek Bridge Rehabilitation.
  2. All contractors and RoadTek crew members must abide by this and be aware of all movements by plant, contractors and BVRT Users.
  3. Signage layout is subject to change over time depending on site conditions and work being undertaken.
  4. BVRT users will be passing the work site on the same side of the bridge throughout the project.
  5. The intent of this map is to provide a general layout of the site with relation to traffic movement.

- The following directions include all Brisbane Valley Rail Trail users:
- All BVRT users to follow signed directions.
  - Walkers and bike riders/cyclists can traverse past site, by dismounting and following the delineated path – be mindful to watch out for uneven ground and step-ups/downs.
  - Horse riders to stop, dismount and wait for directions as advised by the signs and will have a different path to traverse.