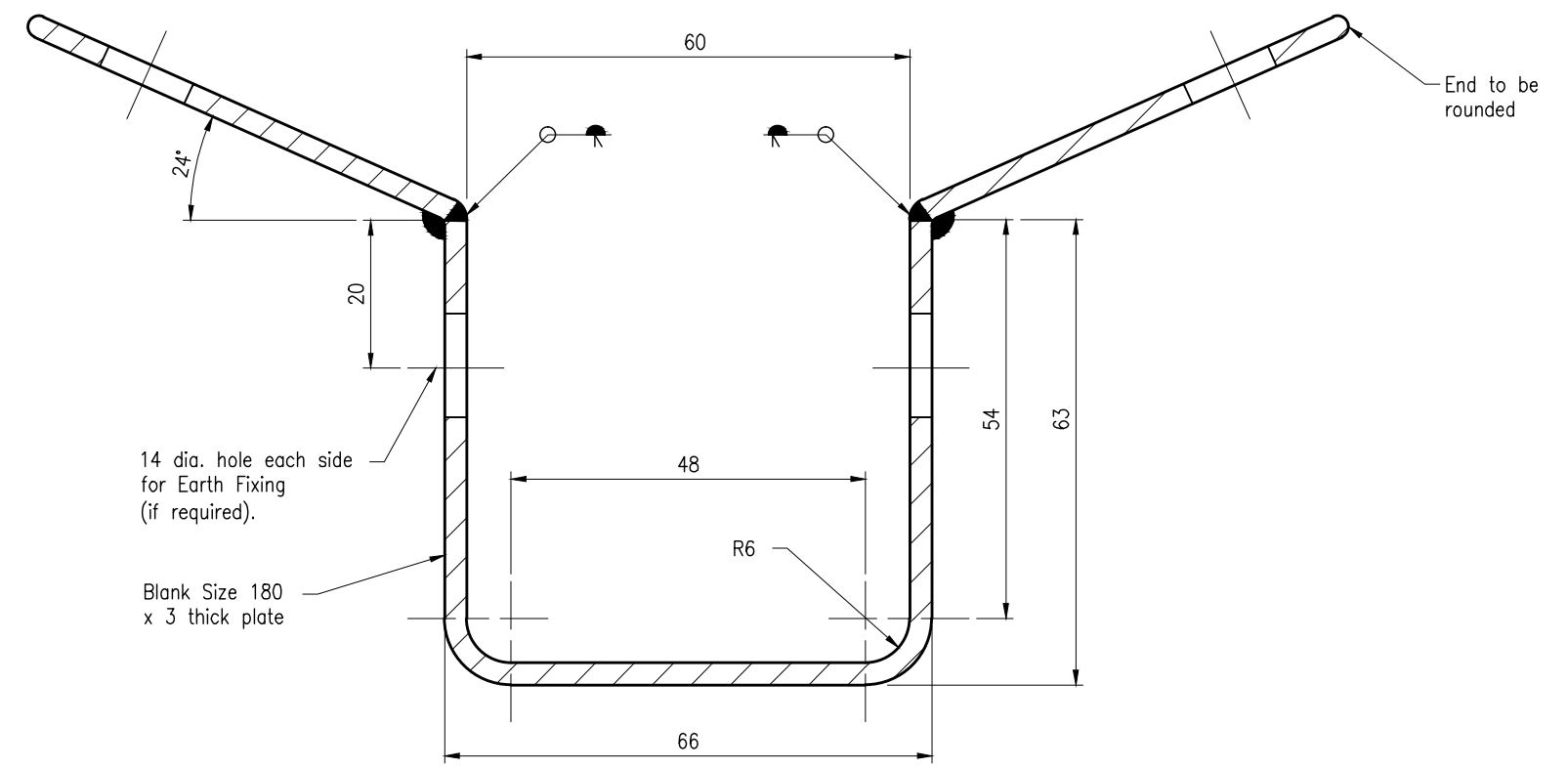


ELEVATION



SECTION A

NOTES:

- TOLERANCE:
 - On all dimensions ± 2 unless otherwise stated.
 - On all angles to be $\pm 2^\circ$ unless otherwise stated.
- MATERIAL:
 - 3mm and 5mm thick steel grade AS/NZS 1594/HU300 or grade AS/NZS 3679.1-250.
- FABRICATION:
 - All bolt holes and slots to be drilled or punched (unless indicated otherwise).
 - Welding in accordance with AS/NZS 1554.1.
 - Remove all sharp edges and burrs.
- PROTECTIVE COATING:
 - Hot dip galvanised in accordance with AS/NZS 4680 after fabrication.
- DIMENSIONS are in millimetres unless shown otherwise.

ASSOCIATED DEPARTMENTAL DOCUMENTS:

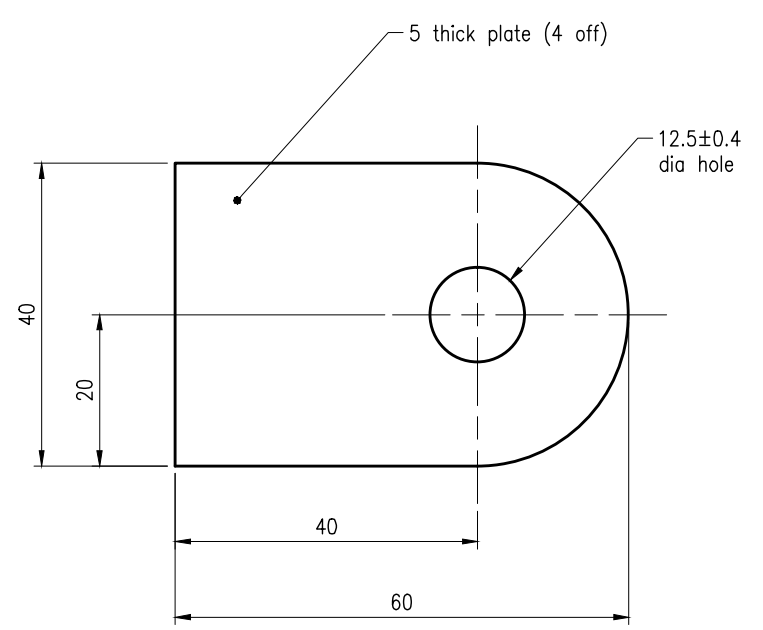
Standard Drawings
Specifications

REFERENCED DOCUMENTS:

Departmental Specifications:
 MRTS78 Fabrication of Structural Steelwork
 MRTS93 Traffic Signals
 MRTS228 Provision of Electrical Switchboards
 MRTS256 Power Cables

Australian Standards:

AS/NZS 1594 Hot-rolled steel flat products
 AS/NZS 1554.1 Structural steel welding - Welding of steel structures
 AS/NZS 4680 Hot-dip galvanized (zinc) coatings on fabricated ferrous articles



DETAIL 1

Department of Transport and Main Roads		 <small>© The State of Queensland (Department of Transport and Main Roads) 2015 http://creativecommons.org/licenses/by/3.0/au</small>	
TRAFFIC SIGNALS/ROAD LIGHTING			
CABLE GUARD MANUFACTURING DETAILS		A3 Not to Scale	Standard Drawing No 1434 Date 10/15
A	B	C	