



**APPROVAL**

**Bruce Highway, Cooroy to Curra (Section D, Woondum to Curra), east of Gympie, Queensland (EPBC 2017/7941)**

This decision is made under sections 130(1) and 133(1) of the *Environment Protection and Biodiversity Conservation Act 1999 (Cth)*. Note that section 134(1A) of the **EPBC Act** applies to this approval, which provides in general terms that if the approval holder authorises another person to undertake any part of the action, the approval holder must take all reasonable steps to ensure that the other person is informed of any conditions attached to this approval, and that the other person complies with any such condition.

**Details**

<b>Person to whom the approval is granted (approval holder)</b>	Department of Transport and Main Roads
<b>ABN of approval holder</b>	39 407 690 291
<b>Action</b>	To upgrade and realign an existing 26 kilometre section of the Bruce Highway, including a bypass between Cooroy and Curra, east of Gympie, Queensland.

**Approval decision**

My decisions on whether or not to approve the taking of the action for the purposes of each controlling provision for the action are as follows.

**Controlling Provisions**

Listed Threatened Species and Communities	
Section 18	Approve
Section 18A	Approve

***Period for which the approval has effect***

This approval has effect until 30 June 2040.

**Decision-maker**

<b>Name and position</b>	Andrew McNee Assistant Secretary of Assessments and Governance Branch Department of the Environment and Energy
<b>Signature</b>	
<b>Date of decision</b>	24 September 2019



## Conditions of approval

This approval is subject to the conditions under the EPBC Act as set out in ANNEXURE A.

---

## ANNEXURE A – CONDITIONS OF APPROVAL

---

### Part A – Conditions specific to the action

---

#### Project requirements

1. Within the **impact site**, the approval holder must not clear more than:
  - a. 3.24 hectares of **Lowland rainforest**;
  - b. 8.08 hectares of **Black-breasted Button-quail habitat**; and
  - c. 135.83 hectares of **Koala habitat**.
2. Prior to **commencement**, a **suitably qualified person** must undertake a baseline survey to determine the extent (in hectares) and **quality** of **Lowland rainforest** in the **riparian area** of Six Mile Creek. Surveys must be undertaken in accordance with the best practice guidelines in effect at the time of the surveys. The approval holder must publish the results of the baseline surveys in the first annual compliance report required under condition 20.
3. To ensure no net loss in the **quality** and extent of **Lowland rainforest** in the **riparian area** of Six Mile Creek as a result of the action, the approval holder must implement a program of annual monitoring for **Lowland rainforest** in the **riparian area**, for the duration of this approval or as otherwise agreed to in writing by the **Department**. The monitoring program must be developed by a **suitably qualified person** within 12 months of **commencement** and include:
  - a. A description of the methodology, timing, effort and frequency of monitoring, consistent with current best practice surveys for the relevant species in this area as reasonably known by a **suitably qualified person**;
  - b. Quantitative and qualitative data to determine the current **quality** of **Lowland rainforest** against the baseline survey data collected under condition 2;
  - c. Performance measures to detect any changes in **quality** of **Lowland rainforest** compared to the baseline data collected under condition 2; and
  - d. Corrective measures to be developed and implemented to address any adverse impacts on the **quality** of **Lowland rainforest** that are attributed to the action.

The annual monitoring must be undertaken by a **suitably qualified person** and must commence within 12 months of **commencement** of the action. Each year the annual results of the monitoring program must be submitted as part of the annual compliance report required under condition 20.

4. Prior to **operation** of the action, the approval holder must establish **fauna connectivity structures** and **fauna exclusion fencing**. Once established, the **fauna connectivity structures** and **fauna exclusion fencing** must be maintained by the approval holder for the duration of the approval. **Exclusion fencing** must include gates that are secured at all times with padlocks or a similar break-proof securing mechanism.

### Translocation requirements

5. Prior to any translocation of **Pineapple zamia** plants, the approval holder must:
  - a. record the number of **viable adult Pineapple zamia** plants at the **impact site**;
  - b. collect enough seeds from **Pineapple zamia** plants at the **impact site** and, if necessary, from **alternative sites**, to enable replacement of no less than 48 per cent of the number of **adult Pineapple zamia** plants at the **impact site**; and
  - c. **legally secure the translocation site**.
6. Prior to **commencement** of **Contract 2**, the approval holder must translocate every **Pineapple zamia** plant from the **impact site** to the **translocation site**. Within 20 **business days** of removing the last **Pineapple zamia** plant from the **impact site**, the approval holder must notify the **Department** of the date the last **Pineapple zamia** plant was removed and the total number of **Pineapple zamia** plants removed (specifying the number of **adult Pineapple zamia** plants removed and the number of **seedling Pineapple zamia** plants removed).
7. The approval holder must ensure any **adult Pineapple zamia** plant that suffers mortality at the **translocation site**, within 5 years of the date the last **Pineapple zamia** plant was removed from the **impact site**, is replaced by 4 **Pineapple zamia** plants. Replacement plants must be sourced from propagation of seeds collected from the **impact site** or from **alternative sites**. Replacement plants must be planted within 1 year of the mortality of the plant they are replacing.
8. By one year before the end date of this approval, the approval holder must ensure that the number of **Pineapple zamia** plants that exist at the **translocation site** is at least 1.5 times the number of **Pineapple zamia** plants translocated from the **impact site**, as reported under condition 6.

### Koala and Black-breasted Button-quail Offset requirements

9. To compensate for the loss of 135.83 hectares of **Koala habitat** and 8.08 hectares of **Black-breasted Button-quail habitat**, the approval holder must, prior to **commencement**, **legally secure** a minimum of 283.91 hectares at the **Koala offset areas** and 32.15 hectares at the **Black-breasted Button-quail offset area**. Within 20 **business days** of securing the **Koala offset areas** and **Black-breasted Button-quail offset area**, and prior to **commencement**, the approval holder must provide the **Department** with evidence of the date the **Koala offset areas** and **Black-breasted Button-quail offset area** were **legally secured** and electronic spatial data (e.g. **shapefile**) and **offset attributes** of the **Koala offset areas** and **Black-breasted Button-quail offset area**.
10. Within 6 months of **legally securing** the **Koala offset areas** and **Black-breasted Button-quail offset area**, the approval holder must complete baseline surveys of the entire **Koala offset areas** and **Black-breasted Button-quail offset area**. The baseline surveys must be conducted by a **suitably qualified person** in accordance with the most recently published version of the **Department's survey guidelines** and include details of:
  - a. the **quality** of **Black-breasted Button-quail habitat** and **Koala habitat**;
  - b. **weed infestation**;
  - c. **Koala density** and **Black-breasted Button-quail presence**; and
  - d. **pest abundance**.
11. Within 1 year of **legally securing** the **Koala offset areas** and **Black-breasted Button-quail offset area**, the approval holder must publish on the **website** and provide to the **Department** a report detailing:
  - a. the results of the baseline surveys required under condition 10;

- b. management measures, prepared by a **suitably qualified person** and subsequently reviewed by an independent **suitably qualified person**, (including timing, frequency and longevity) that will be implemented to deliver the outcomes required by condition 12, including:
  - i. performance and completion criteria for evaluating the success of the management measures and criteria for triggering remedial action (if necessary);
  - ii. a program, including timelines, to monitor (capable of timely detection of triggers for corrective action) and report on the effectiveness of the management measures, and progress against the performance and completion criteria;
  - iii. remediation measures to be implemented where monitoring of the performance criteria indicate failure to achieve the outcomes of condition 12; and
  - iv. a description of potential risks to the successful implementation of the management measures and a description of the control measures that would be implemented to mitigate against these risks and residual risk ratings.

12. The approval holder must:

- a. for the duration of the approval, ensure no net loss in the **quality** and extent of **Black-breasted Button-quail habitat** and the **Koala habitat** within the **Koala offset areas and Black-breasted Button-quail offset area** compared to the baseline survey data reported under condition 11.a;
- b. within 12 months of **legally securing the Koala offset areas**, commence implementation of an ongoing **Koala food tree** replanting program in the **Koala offset areas**. The replanting program must be undertaken by a **suitably qualified person** and include measures to ensure the maintenance and survival of new **Koala food trees** in the **Koala offset areas**.
- c. within 15 years of legally securing the Koala offset areas, the approval holder must demonstrate a 20% increase in **Koala food tree** recruitment over the entire **Koala offset areas** compared to the baseline survey results reported under condition 11.a;
- d. demonstrate the following reductions in **weed infestation** compared to the baseline data reported under condition 11.a:
  - i. 50% reduction within 3 years of **legally securing the Koala offset areas and Black-breasted Button-quail offset area**;
  - ii. 90% reduction within 10 years of **legally securing the Koala offset areas and Black-breasted Button-quail offset area**.
- e. Within 15 years of **legally securing the Koala offset areas**, demonstrate that an increase of at least 50% of **Koala density** has been achieved across the entire **Koala offset areas** compared to the baseline data reported under condition 11.a. To determine progress towards this outcome, **Koala density** surveys must be undertaken across the entire **Koala offset areas** by a **suitably qualified person** within 5 and 10 years respectively of **legally securing the Koala offset areas**. Contingency measures must be implemented to increase **Koala density** across the entire **Koala offset areas** where the results of these surveys indicate minimal increases in **Koala density**;
- f. demonstrate a reduction, maintained for 10 consecutive years from **legally securing the Koala offset areas and Black-breasted Button-quail offset area**, in **pest abundance** compared to the baseline data reported under condition 11.a;
- g. report to the **Department**, as part of Annual Compliance Reporting required under condition 20, matters required under condition 11.b and progress towards and achievement of the outcome milestones specified in condition 12.

### Lowland rainforest offset requirements

13. To compensate for the loss of 3.24 hectares of **Lowland rainforest**, the approval holder must submit an Offset Strategy prepared by a **suitably qualified person** in accordance with the **Environmental Management Plan Guidelines** and the principles of the **EPBC Act Environmental Offsets Policy**. The action must not **commence** until the Offset Strategy has been approved by the **Minister** in writing. The approved Offset Strategy must be implemented and published on the **website**. The Offset Strategy must:
- provide a written description and map that clearly defines the location and boundaries of the proposed offset area(s) for **Lowland rainforest** and includes **offset attributes** and **shapefiles**;
  - include timelines and mechanisms for **legally securing** the offset area(s);
  - demonstrate the presence of **Lowland rainforest** in the proposed offset area(s) and the **quality** of the **Lowland rainforest** in the proposed offset area(s), including evidence that it meets the **threshold criteria** for **Lowland rainforest**;
  - commit to ecological outcomes and offset completion criteria for **Lowland rainforest** and the timeframes in which these will be achieved;
  - include time bound performance and completion criteria for evaluating that ecological outcomes have been achieved and criteria for triggering remedial action;
  - commit to a program to monitor and report on progress against the performance and completion criteria.

### Corrective action requirements

14. If, at any time during the life of the approval, the **Minister** is not satisfied that the outcomes required under conditions 3, 8 or 12 are likely to be achieved, or is not satisfied there is sufficient evidence that the outcomes required under conditions 3, 8 or 12 are likely to be achieved (including on the basis of information provided in compliance reports and or audit(s) under these conditions of approval), the **Minister** may require the approval holder to submit a corrective action plan for the **Minister's** approval, to monitor, manage, avoid, mitigate, offset, record or report on, impacts to **Pineapple zamia**, **Lowland rainforest**, the **Black-breasted Button-quail** and/or the **Koala**.
- The **Minister** may set a timeframe in which the corrective action plan must be submitted, and may specify that the corrective action plan must be prepared or reviewed by a **suitably qualified person** (or another specified person).
  - If the **Minister** approves the corrective action plan, the approval holder must implement the approved corrective action plan.

---

## Part B – Standard administrative conditions

---

### Commencement of the action

15. The approval holder must notify the **Department** in writing of the date of **commencement** within **10 business days** after the date of **commencement**.

### Compliance records

16. The approval holder must maintain accurate and complete **compliance records**.
17. If the **Department** makes a request in writing, the approval holder must provide electronic copies of **compliance records** to the **Department** within the timeframe specified in the request.

Note: **Compliance records** may be subject to audit by the **Department** or an independent auditor in accordance with section 458 of the **EPBC Act**, and or used to verify compliance with the conditions. Summaries of the result of an audit may be published on the **Department's** website or through the general media.

## Preparation and publication of plans

18. The approval holder must:
- submit **plans** electronically to the **Department** for approval by the **Minister**;
  - publish each **plan** on the **website** within 20 **business days** of the date the **plan** is approved by the **Minister** or of the date a revised plan is submitted to the **Minister**, unless otherwise agreed to in writing by the **Minister**;
  - exclude or redact **sensitive ecological data** from **plans** published on the **website** or provided to a member of the public; and
  - keep **plans** published on the **website** until the end date of this approval.
19. The approval holder must ensure that any **monitoring data** (including **sensitive ecological data**), surveys, maps, and other spatial and metadata required the conditions of this approval, is prepared in accordance with the **Department's Guidelines for biological survey and mapped data** (2018) and submitted electronically to the **Department** with the relevant **plan**.

## Annual compliance reporting

20. The approval holder must prepare a **compliance report** for each 12 month period following the date of **commencement**, or as otherwise agreed to in writing by the **Minister**. The approval holder must:
- publish each **compliance report** on the **website** within 60 **business days** following the relevant 12 month period;
  - notify the **Department** by email that a **compliance report** has been published on the **website** within 5 **business days** of the date of publication;
  - keep all **compliance reports** publicly available on the **website** until this approval expires;
  - exclude or redact **sensitive ecological data** from **compliance reports** published on the **website**; and
  - where any **sensitive ecological data** has been excluded from the version published, submit the full **compliance report** to the **Department** within 5 **business days** of publication.

Note: **Compliance reports** may be published on the **Department's** website.

## Reporting non-compliance

21. The approval holder must notify the **Department** in writing of any: **incident**; non-compliance with the conditions; or non-compliance with the commitments made in **plans**. The notification must be given as soon as practicable, and no later than 5 **business days** after becoming aware of the **incident** or non-compliance. The notification must specify:
- the condition which is or may be in breach; and
  - a short description of the **incident** and or non-compliance.
22. The approval holder must provide to the **Department** the details of any **incident** or non-compliance with the conditions or commitments made in **plans** as soon as practicable and no later than 10 **business days** after becoming aware of the **incident** or non-compliance, specifying:
- any corrective action or investigation which the approval holder has already taken or intends to take in the immediate future;
  - the potential impacts of the **incident** or non-compliance; and
  - the method and timing of any remedial action that will be undertaken by the approval holder.

### Independent audit

23. The approval holder must ensure that **independent audits** of compliance with the conditions are conducted as requested in writing by the **Minister**.
24. For each **independent audit**, the approval holder must:
  - a. provide the name and qualifications of the independent auditor and the draft audit criteria to the **Department**;
  - b. only commence the **independent audit** once the audit criteria have been approved in writing by the **Department**; and
  - c. submit an audit report to the **Department** within the timeframe specified in the approved audit criteria.
25. The approval holder must publish the audit report on the **website** within 10 **business days** of receiving the **Department's** approval of the audit report and keep the audit report published on the **website** until the end date of this approval.

### Revision of plans

26. The approval holder may choose to revise a **plan** or strategy approved by the **Minister** under condition 13, by submitting an application in accordance with the requirements of section 143A of the **EPBC Act**. If the **Minister** approves the **plan** then, from the date specified, the approval holder must implement the **plan** in place of the previous **plan**.

### Completion of the action

27. Within 20 **business days** after **completion**, the approval holder must notify the **Department** in writing and provide **completion data**.

---

## Part C - Definitions

---

In these conditions, except where contrary intention is expressed, the following definitions are used.

**Adult Pineapple zamia** means **Pineapple zamia** plants that have an underground stem.

**Alternative sites** means a site or sites that support **Pineapple zamia plants** in a representative geographical region (as determined by a **suitably qualified person**) to the **Pineapple zamia plants** within the **impact site**.

**Black-breasted Button-quail** means the Black-breasted Button-quail (*Turnix melanogaster*) listed as a threatened species under the **EPBC Act**.

**Black-breasted Button-quail habitat** means any areas of vegetation that provides habitat suitable for the **Black-breasted Button-quail** as described in the current conservation and/or recovery plan for the species approved by the **Minister**.

**Black-breasted Button-quail offset area** means the area within the boundary lines for the offset site as shown by the map at [Attachment F](#).

**Black-breasted Button-quail presence** means number of Black-breasted Button-quail identified on the **Black-breasted Button-quail offset area**, including evidence of **Black-breasted Button-quail** foraging, sheltering or otherwise using available habitat within the **Black-breasted Button-quail offset area**.

**Buffers** means 'buffer zone' as described in Threatened Species Scientific Committee (2011). *Commonwealth Listing Advice on Lowland Rainforest of Subtropical Australia*. Department of Sustainability, Environment, Water, Population and Communities, Canberra.

**Business day** means a day that is not a Saturday, a Sunday or a public holiday for the whole of Queensland.



**Commencement** means the first instance of the use of heavy duty equipment for the purpose of clearing vegetation or breaking the ground to construct roads associated with the action. This does not include physical disturbance necessary to:

- a. undertake pre-clearance surveys or monitoring programs;
- b. install signage and or temporary fencing to prevent unapproved use or access to the **impact site** or the **translocation site**;
- c. protect environmental and property assets from fire, weeds and pests, including construction of fencing and maintenance of existing surface access tracks;
- d. undertake geotechnical investigations;
- e. relocate public utility plant (e.g. electricity transmission lines); or
- f. translocate **Pineapple Zamia** plants from the **impact site** to the **translocation site**.

**Completion** means the time at which all conditions have been fully met.

**Completion data** means an environmental report and spatial data information clearly detailing how the outcomes required under the conditions of this approval have been met. The **Department's** preferred spatial data format is **shapefile**. This includes, but is not limited to information detailing:

- i. the date, location and extent of **protected matter** habitat cleared within the **impact site**;
- ii. the location, extent and **quality** of **protected matter** habitat within the **Koala offset areas** and **Black-breasted Button-quail offset area**;
- iii. the date, location and extent of **Lowland rainforest** cleared within the **impact site**;
- iv. the location, extent and **quality** of offsets for **Lowland rainforest** as required by the approved Offset Strategy; and
- v. the number of **Pineapple zamia** plants at the **translocation site**.

**Compliance records** means all documentation or other material in whatever form required to demonstrate compliance with the conditions of approval. This includes any documentation in the approval holder's possession or that are within the approval holder's power to obtain lawfully.

**Compliance report(s)** means written reports:

- a. providing accurate and complete details of compliance, **incidents**, and non-compliance with the conditions and the **plans**;
- b. consistent with the **Department's Annual Compliance Report Guidelines (2014)**;
- c. including a **shapefile** of any clearance of any **protected matters**, or their habitat, undertaken within the relevant 12 month period; and
- d. annexing a schedule of all **plans** prepared and in existence in relation to the conditions during the relevant 12 month period.

**Contract 2** means the Northern Contract of approximately 18 km in length that will extend from north of Sandy Creek Road to Curra as shown in the map at Attachment A.

**Department** means the Australian Government agency responsible for administering the **EPBC Act**.

**Department's survey guidelines** means the relevant Survey Guidelines for Australia's threatened birds and Survey Guidelines for Australia's threatened mammals as published at <http://www.environment.gov.au/epbc/publications#compliance>, immediately prior to the undertaking of the relevant survey.

**EPBC Act** means the *Environment Protection and Biodiversity Conservation Act 1999* (Cth).



**EPBC Act Environmental Offsets Policy** means the *Environment Protection and Biodiversity Conservation Act 1999 Environmental Offsets Policy* (October 2012), or subsequent revision, including the Offsets Assessment Guide.

**EPBC Act listed threatened species and communities** includes the **Koala**, **Black-breasted Button-quail**, **Pineapple zamia** and **Lowland rainforest**.

**Environmental Management Plan Guidelines** means the **Department's** *Environmental Management Plan Guidelines*. Commonwealth of Australia (2014), or subsequent revision.

**Fauna connectivity structure** means a structure designed by a **suitably qualified person** capable of enabling safe passage of the **Black-breasted Button-quail** and the **Koala** under the road(s) constructed as a part of the action at the locations marked as 'Fauna Connectivity Structure' in the maps at Attachments B1, B2, B3 and B4.

**Fauna exclusion fencing** means a structure and tree and shrub free precinct, the design of which is certified by a **suitably qualified person** to be capable of preventing the **Black-breasted Button-quail** and the **Koala** from crossing the road(s), constructed as a part of the action, located where marked as 'Fauna Exclusion Fencing' in the maps at Attachments C1 and C2.

**Impact site** means the area marked as Contract 1 and Contract 2 in the map at Attachment A.

**Incident** means any event which has the potential to, or does, impact on **protected matter(s)**.

**Independent audit(s)** means an audit conducted by an independent and **suitably qualified person** as detailed in the **Department's** *Environment Protection and Biodiversity Conservation Act 1999 Independent Audit and Audit Report Guidelines* (2015).

**Koala** means the Koala (combined populations of Queensland, New South Wales and the Australian Capital Territory) (*Phascolarctos cinereus (combined populations of Qld, NSW and the ACT)*) listed as a threatened species under the **EPBC Act**.

**Koala density** means the number and/or utilisation and distribution of **Koalas** per unit area as determined in field surveys over the entire **Koala offset areas** undertaken by a **suitably qualified person** using a scientifically robust and repeatable methodology over a timeframe that serves as a sound basis for comparison.

**Koala food tree** means a species of tree of genus Angophora, Corymbia, Eucalyptus, Lophostemon or Melaleuca, with a height of more than 4 metres or with a trunk circumference more than 31.5 centimetres at 1.3 metres above the ground, the leaves of which are known to be consumed by the **Koala**.

**Koala habitat** means any vegetation that contains Koala food trees and scores five or more using the habitat assessment tool in Table 4 of the **Koala referral guidelines**.

**Koala offset areas** means the areas within the boundary lines for offset sites as shown by the maps at Attachments E1 and E2.

**Koala referral guidelines** means **Department's** *EPBC Act referral guidelines for the vulnerable koala (combined populations of Queensland, New South Wales and the Australian Capital Territory)*, Commonwealth of Australia, 2014.

**Legally secure** means protect for conservation under a voluntary declaration under the *Vegetation Management Act 1999* (Qld) or as a nature refuge under the *Nature Conservation Act 1992* (Qld) or another enduring protection mechanism agreed to in writing by the **Department**.

**Lowland rainforest** means vegetation that is determined by surveys undertaken by a **suitably qualified person** as conforming to the Lowland Rainforest of Subtropical Australia listed as a threatened ecological community under the **EPBC Act** and defined in accordance with the Threatened Species Scientific Committee (2011). *Commonwealth Listing Advice on Lowland Rainforest of Subtropical*

Australia. Department of Sustainability, Environment, Water, Population and Communities, Canberra. This includes **buffers**.

**Minister** means the Australian Government Minister administering the **EPBC Act** including any delegate thereof.

**Monitoring data** means the data required to be recorded under the conditions of this approval.

**Offset attributes** means an '.xls' file capturing relevant attributes of the offset area, including:

- i. EPBC Act reference number
- ii. Physical address of the offset area;
- iii. Coordinates of the boundary points in decimal degrees;
- iv. **EPBC Act** listed threatened species and communities that the offset compensates for;
- v. Any additional **protected matters** that are benefiting from the offset; and
- vi. Size of the offset in hectares.

**Operation** means the first point at which public vehicles can traverse the roads constructed as a result of the action.

**Pest abundance** means the number, composition and distribution of non-native vertebrate animals known to predate on the **Black-breasted Button-quail** or the **Koala**, as determined in a field survey over the entire **Koala offset areas** and **Black-breasted Button-quail offset area** undertaken by a **suitably qualified person** using a scientifically robust and repeatable methodology over a timeframe that serves as a sound basis for comparison to data acquired to demonstrate achievement of the milestone required under condition 12.f.

**Pineapple zamia** means Pineapple zamia (*Macrozamia pauli-guilielmi*) listed as a threatened species under the **EPBC Act**.

**Plan(s)** means any of the documents required to be prepared, approved by the **Minister**, and/or implemented by the approval holder and published on the **website** in accordance with these conditions (includes action management plans and/or strategies).

**Protected matter(s)** means the following listed threatened species and ecological communities protected under a controlling provision in Part 3 of the **EPBC Act** for which this approval has effect:

- Koala (combined populations of Queensland, New South Wales and the Australian Capital Territory) (*Phascolarctos cinereus* (combined populations of Qld, NSW and the ACT));
- Black-breasted Button-quail (*Turnix melanogaster*);
- Pineapple zamia (*Macrozamia pauli-guilielmi*);
- Lowland Rainforest of Subtropical Australia.

**Quality** means a measure, as determined by a **suitably qualified person**, of site condition, site context and species individual or population persistence or species stocking rate calculated in accordance with the requirements of the **EPBC Act offsets assessment guide** or other biocondition assessment process agreed by the **Department**. The assessment process must use a scientifically robust and repeatable methodology over a timeframe that serves as a sound basis for comparison to baseline data acquired to demonstrate achievement of relevant milestones required in conditions 3, 12 and 13.

**Riparian area** means the areas of **Lowland rainforest** along Six Mile Creek as identified in the map at [Attachment G](#).

**Seedling Pineapple zamia** means **Pineapple zamia** plants that are not **adult Pineapple zamia** plants.

**Sensitive ecological data** means data as defined in the **Department's Sensitive Ecological Data – Access and Management Policy V1.0.** (2016).

**Shapefile(s)** means an ESRI shapefile format used for storing location and attributes information of geographic features. **Shapefiles** must contain '.shp', '.shx', '.dbf' files and a '.prj' file that specifies the projection/geographic coordinate system used. **Shapefiles** should also include an '.xml' metadata file that describes the **shapefile** for discovery and identification purposes.

**Suitably qualified person** means a person who has professional qualifications, training, skills and at least three (3) years of relevant experience specific to locating, identifying and conserving the **protected matters** that are subject to this approval and can give authoritative independent assessment, advice and analysis specific to the **protected matters** using the relevant protocols, standards, methods and/or literature. If the person does not have appropriate professional qualifications, the person must have at least five (5) years of relevant experience specific to locating, identifying and conserving the **protected matters** that are subject to this approval and can give authoritative independent assessment, advice and analysis specific to the **protected matters** using the relevant protocols, standards, methods and/or literature.

**Threshold criteria** means the key diagnostic characteristics and condition thresholds used to define **Lowland rainforest** as described in the Threatened Species Scientific Committee (2011). *Commonwealth Listing Advice on Lowland Rainforest of Subtropical Australia.* Department of Sustainability, Environment, Water, Population and Communities, Canberra.

**Translocation site** means the area adjacent to Curra Creek South Branch as shown as 'MPG Translocation Site' in the map at [Attachment D](#).

**Viable Pineapple zamia plant** means an **adult Pineapple zamia** plant or **seedling Pineapple zamia** plant deemed by a **suitably qualified person** to be suitable for translocation from the **impact site** to the **translocation site**.

**Website** means a set of related web pages located under a single domain name attributed to the approval holder and available to the public.

**Weed infestation** means the abundance, composition and distribution of non-native flora species known to restrict the movement or adversely impact on available habitat of the **Black-breasted Button-quail** and/or the **Koala** across the landscape, as determined by a field survey over the entire **Koala offset areas** and **Black-breasted Button-quail offset area** undertaken by a **suitably qualified person** using a scientifically robust and repeatable methodology over a timeframe that serves as a sound basis for comparison to data acquired to demonstrate achievement of the milestones required under condition 12.c.

## **ATTACHMENTS**

**Attachment A** — map of **impact site**

**Attachments B1, B2, B3 and B4** — maps of **fauna connectivity structures**

**Attachments C1 and C2** — maps of **fauna exclusion fencing**

**Attachment D** — map of **translocation site**

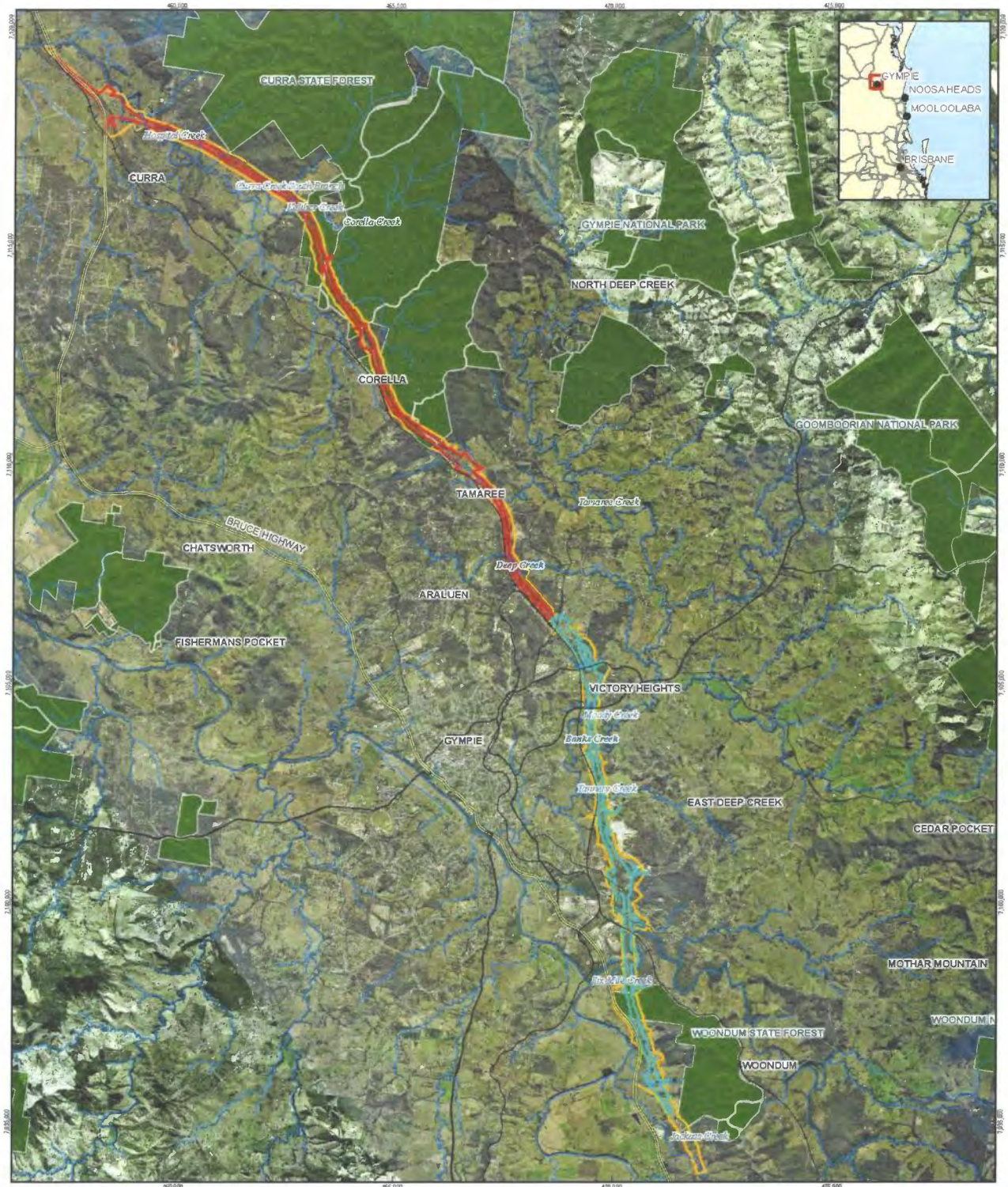
**Attachments E1 and E2** — maps of **Koala offset areas**

**Attachment F** — map of **Koala and Black-breasted Button-quail offset areas**

**Attachment G** — map of **Six Mile Creek Lowland rainforest riparian area**

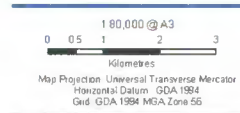


**Attachment A – map of impact site. Development footprint identified as areas within green lines of Contract 1 and red lines of Contract 2.**



- LEGEND**
- Town
  - Secondary Road
  - Local Connector Road
  - Street/Local Road
  - Railway
  - Highway
  - Watercourse
  - Project Area
    - Contract 1
    - Contract 2
    - Survey Area
  - Protected Areas

Based on information provided by the State of QLD (© HRM 2016) in consideration of the State permitting use of the data for knowledge and agree that the State does not warrant in relation to the data (including accuracy, reliability, completeness, currency or utility) and is not liable (including without limitation, liability in negligence) for any loss, damage or costs (including consequential damages) resulting from any use of the data. Data must not be used for navigation or be used in breach of the privacy laws.



Department of Transport and Main Roads  
 Bruce Highway – Cooroy to Curra  
 (Section D: Woondum to Curra)

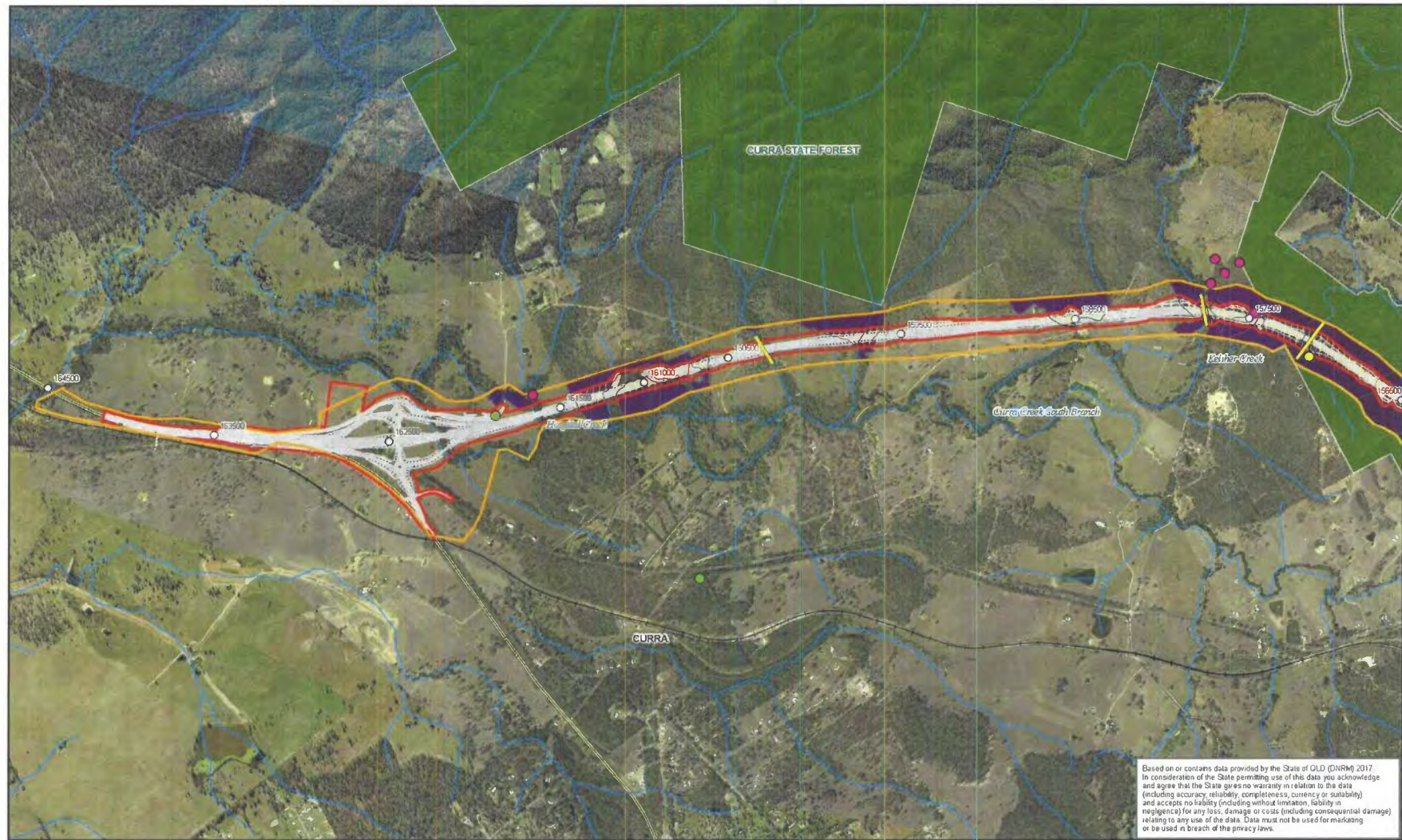
Job Number: 41-29914  
 Revision: 0  
 Date: 24 Mar 2017

**Locality Plan**

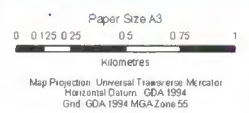
© 14/02/2014 09:55:14 \\map\work\environment\m41\_29914\_3035\_EPBC\_J\g1\_A3\_R40.mxd 8 Innovation Parkway Birtinya QLD 4575 Australia T 61 7 5413 9100 F 61 7 5413 8199 E bta01ma@ghd.com W www.ghd.com  
 © 2017 Where necessary GHD has been taken to prepare this map. GHD (and DATA CUSTOMER) make no representation or warranty about its accuracy, reliability, completeness or suitability for any particular purpose and cannot accept liability and responsibility of any kind (whether in contract, tort or otherwise) for any errors, omissions, damages or other consequences which may be incurred by any party as a result of the map being inaccurate, incomplete or unavailable in any way and for any reason.  
 Data sources: SA, Town (2014), TM, Aerial Imagery (2016), Survey Area (2016), GPRM, Railway, Watercourses (2016), Road (2016), GHD, Project Area (March 2017). Created by: SC



**Attachment B1 – map of fauna connectivity structures for Koala located at northern section of impact site – connectivity structures marked as yellow bars on impact site**



Based on or contains data provided by the State of QLD (DNRM) 2017. In consideration of the State permitting use of this data you acknowledge and agree that the State gives no warranty in relation to the data (including accuracy, reliability, completeness, currency or suitability) and accepts no liability (including without limitation, liability in negligence) for any loss, damage or costs (including consequential damage) relating to any use of the data. Data must not be used for marketing or be used in breach of the privacy laws.



**LEGEND**

- Town
- 1 km Chainage
- Railway
- Watercourses
- Fauna Connectivity Structure
- Survey Area
- Protected Areas
- Project Area
- Contract 1
- Contract 2
- ERM/Jacobs Threatened Fauna Records
- Koala (Record)
- Koala (Scratches/Scat)
- Koala Evidence Present (USC)
- Koala Habitat to be Lost
- Habitat Critical to the Survival of the Koala

**Department of Transport and Main Roads**  
**Bruce Highway Cooroy to Curra**  
**(Section D: Woodnum to Curra)**

**GHD**

Job Number: 41-29914  
 Revision: 0  
 Date: 24 Mar 2017

**Koala records and habitat**

© 2017. All rights reserved. GHD and DMR make no representation or warranty, and do not accept liability, for any particular purpose and cannot accept liability and responsibility of any kind (whether in contract, tort or otherwise) for any losses, costs, damages or other losses (including indirect or consequential damage) which are or may be incurred by any party as a result of the map being inaccurate, incomplete or unusable in any way and/or any other use. Data source: DNRM Ra (2014), Raes (2018), Towns (2016), Protected Areas (2016), TMR Imagery, Survey Area, Chainage (2016), ERM/Jacobs Threatened Fauna Records, Habitat Critical to the Survival of the Koala (2016), GHD Fauna Connectivity Structures (2016), Project Area (March 2017), Road Design (November 2016), USC - Koala Evidence Present (2016). Created by: srb/awb



**Attachment B2 – map of fauna connectivity structures for Koala located at northern section of impact site – connectivity structures marked as yellow bars on impact site**



<p>Paper Size A3</p> <p>0 0.125 0.25 0.5 0.75 1</p> <p>Kilometres</p> <p>Map Projection: Universal Transverse Mercator Horizontal Datum: GDA 1994 Grid: GDA 1994 MGA Zone 55</p>	<p><b>LEGEND</b></p> <ul style="list-style-type: none"> <li>● Town</li> <li>○ 1 km Chainage</li> <li>— Railway</li> <li>— Watercourses</li> <li>— Fauna Connectivity Structure</li> <li>— Survey Area</li> <li>— Protected Areas</li> <li>— Project Area                     <ul style="list-style-type: none"> <li>— Contract 1</li> <li>— Contract 2</li> </ul> </li> <li>— ERM Jacobs Threatened Fauna Records                     <ul style="list-style-type: none"> <li>● Koala (Record)</li> <li>● Koala (Scratches/Scat)</li> <li>● Koala Evidence Present (USC)</li> </ul> </li> <li>— Koala Habitat to be Lost</li> <li>— Habitat Critical to the Survival of the Koala</li> </ul>	<p><b>Department of Transport and Main Roads</b> Bruce Highway Cooroy to Curra (Section D: Woodnum to Curra)</p> <p><b>Koala records and habitat</b></p>	<table border="0"> <tr> <td>Job Number</td> <td>41-29914</td> </tr> <tr> <td>Revision</td> <td>0</td> </tr> <tr> <td>Date</td> <td>24 Mar 2017</td> </tr> </table>	Job Number	41-29914	Revision	0	Date	24 Mar 2017
Job Number	41-29914								
Revision	0								
Date	24 Mar 2017								

© 2017. What every user has been taken to prepare the map, TMR, GHD and DMRM make no representation or warranties about its accuracy, reliability, completeness or availability for any particular purpose and cannot accept liability and responsibility of any kind (whether in contract, tort or otherwise) for any errors, loss or damages arising from use of the map being inaccurate, incomplete or unavailable in any way and for any reason. Data source: GHD (2014), TMR (2014), TMR (2015), Protected Areas (2015), TMR Imagery, Survey Area, Chainage (2015), ERM Jacobs Threatened Fauna Records, Habitat Critical to the Survival of the Koala (2015), GHD Fauna Connectivity Structures (2015), Project Area (March 2017), Road Design (November 2016) USC Koala Evidence Present (2016). Created by tomabell



Attachment B3 – map of fauna connectivity structures for Koala located at central section of impact site – connectivity structures marked as yellow bars on impact site



Based on or contains data provided by the State of QLD (DNRM) 2017. In consideration of the State permitting use of this data you acknowledge and agree that the State gives no warranty in relation to the data (including accuracy, reliability, completeness, currency or suitability) and accepts no liability (including without limitation, liability in negligence) for any loss, damage or costs (including consequential damage) relating to any use of the data. Data must not be used for marketing or be used in breach of the privacy laws.

<p>Paper Size A3</p> <p>Map Projection: Universal Transverse Mercator Horizontal Datum: GDA 1994 Grid: GDA 1994 MGA Zone 55</p>	<p><b>LEGEND</b></p> <ul style="list-style-type: none"> <li>● Town</li> <li>○ 1 km Chainage</li> <li>— Railway</li> <li>— Watercourses</li> <li>— Fauna Connectivity Structure</li> <li>— Survey Area</li> <li>— Protected Areas</li> <li>— Project Area</li> <li>— Contract 1</li> <li>— Contract 2</li> <li>— Koala Habitat to be Lost</li> <li>— Habitat Critical to the Survival of the Koala</li> </ul>	<p><b>ERM Jacobs Threatened Fauna Records</b></p> <ul style="list-style-type: none"> <li>● Koala (Record)</li> <li>● Koala (Scratches/Scat)</li> <li>● Koala Evidence Present (USC)</li> </ul>	<p><b>Department of Transport and Main Roads</b> Bruce Highway Cooroy to Curra (Section D: Woodnum to Curra)</p> <p><b>GHD</b></p> <p><b>Koala records and habitat</b></p>	<p>Job Number: 41-29314 Revision: 0 Date: 24 Mar 2017</p>
---	--	--	--	---

© 2017. Whilst every care has been taken in preparing this map, TMR, DHD and DNRM make no representation or warranties about the accuracy, reliability, completeness or suitability for any particular purpose and cannot accept liability and responsibility of any kind (including consequential damage) which may or may not be incurred by any party as a result of the map being inaccurate, incomplete or unreliable in any way and/or for any reason. Data source: DNRM R 24(2016), Road (2016), Towns (2015), Protected Areas (2016), TMR, Imagery, Survey Area, Chainage (2016), ERM Jacobs Threatened Fauna Records, Habitat Critical to the Survival of the Koala (2016), GHD, Fauna Connectivity Structures (2017), Project Area (March 2017), Road Design (November 2016), USC, Koala Evidence Present (2016). Created by a chadwick



**Attachment B4 – map of fauna connectivity structures for Koala and Black-breasted Button-quail located at southern section of impact site – connectivity structures marked as yellow bars on impact site**

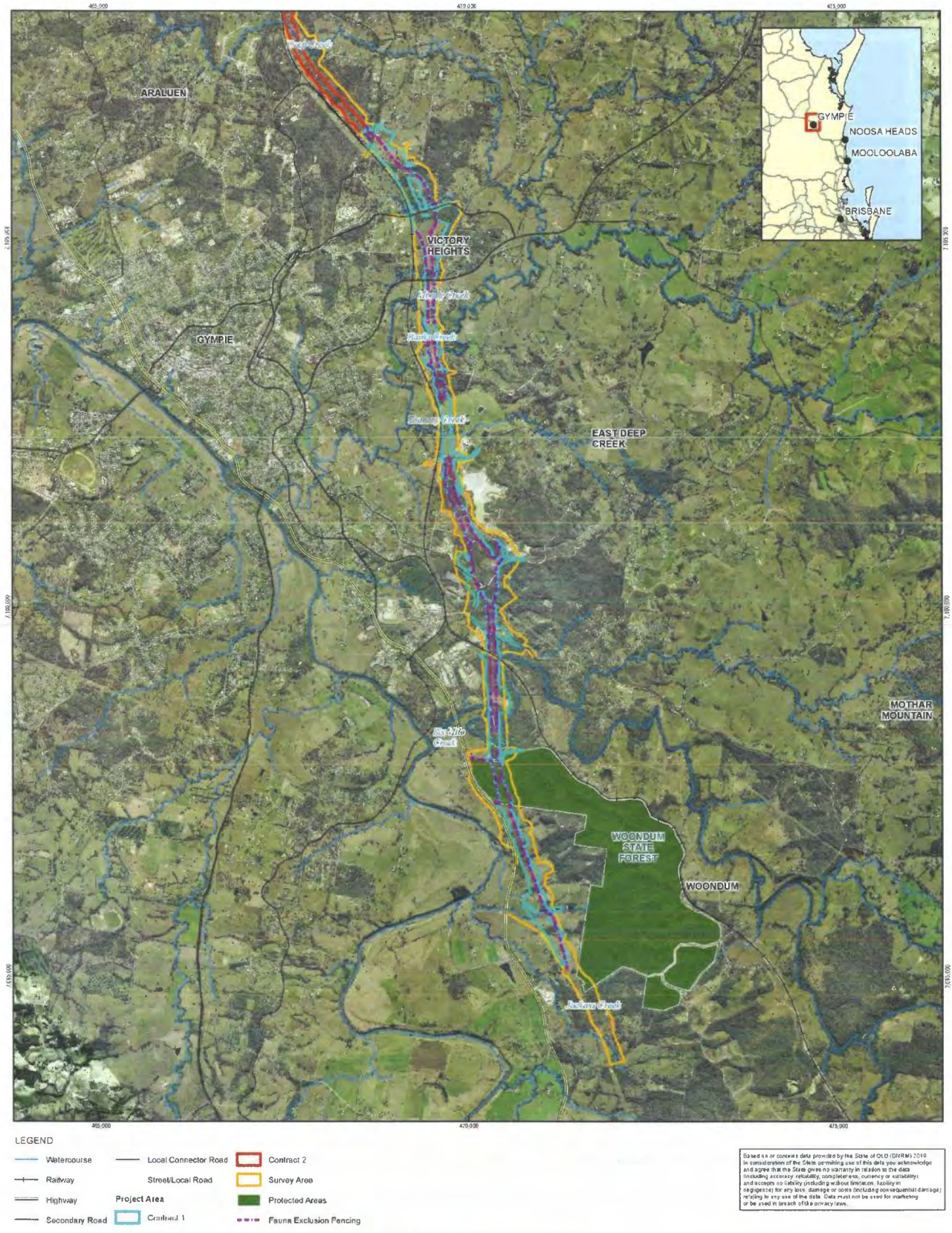


Based on or contains data provided by the State of QLD (DNRM) 2017  
 In consideration of the State permitting use of this data you acknowledge  
 and agree that the State gives no warranty in relation to the data  
 (including accuracy, reliability, completeness, currency or suitability)  
 and accepts no liability (including without limitation, liability in  
 negligence) for any loss, damage or costs (including consequential damage)  
 relating to any use of this data. Data must not be used for marketing  
 or be used in breach of the privacy laws

<p>Paper Size A3</p> <p>0 0.125 0.25 0.5 0.75 1</p> <p>Kilometres</p> <p>Map Projection: Universal Transverse Mercator          Horizontal Datum: GDA 1994          Grid: GDA 1994 MGA Zone 55</p>	<p><b>LEGEND</b></p> <ul style="list-style-type: none"> <li>● Town</li> <li>○ 1 km Chainage</li> <li>— Railway</li> <li>— Water courses</li> <li>— Fauna Connectivity Structure</li> <li>— Survey Area</li> <li>— Protected Areas</li> <li>— Project Area</li> <li>— Contract 1</li> <li>— Contract 2</li> <li>— ERM/Jacobs Threatened Fauna Records                     <ul style="list-style-type: none"> <li>● Koala (Record)</li> <li>● Koala (Scratches/Scat)</li> <li>● Koala Evidence Present (USC)</li> </ul> </li> <li>□ Koala Habitat to be Lost</li> <li>■ Habitat Critical to the Survival of the Koala</li> </ul>	<p><b>Department of Transport and Main Roads</b>  <b>Bruce Highway Cooroy to Curra</b>  <b>(Section D: Woodnum to Curra)</b></p> <p><b>GHD</b></p> <p><b>Koala records and habitat</b></p>	<p>Job Number: 41-29914          Revision: 0          Date: 24 Mar 2017</p> <p>© Innovation Parkway Brisbane QLD 4575 Australia T 61 7 5413 8100 F 61 7 5413 8199 E bta01ma@ghd.com W www.ghd.com</p> <p><small>© 2017. All rights reserved. GHD and DNRM make no representation or warranty about the accuracy, reliability, completeness or suitability for any particular purpose and cannot accept liability and responsibility of any kind (including in contract, tort or otherwise) for any errors, omissions, inaccuracies or consequential damages which may be incurred by any party as a result of the use of this map being inaccurate, incomplete or outdated in any way and for any reason. Data source: DNRM, State of Queensland (2016), Protected Areas (2016), TMR, Images, Survey Area, Campaign (2016), ERM/Jacobs Threatened Fauna Records, Habitat Critical to the Survival of the Koala (2016), GHD Fauna Connectivity Structures (2016), Project Area (March 2017), Road Design (November 2016), USC Koala Evidence Present (2016). Created by subadweb.</small></p>
--	--	--	--



**Attachment C1 – map of fauna exclusion fencing for Koala and Black-breasted Button-quail located at southern section (Contract 1) of impact site – exclusion fencing marked as purple lines on impact site**



1:45,000 @ A3  
0 0.25 0.5 1 1.5  
Kilometres  
Map Projection: Universal Transverse Mercator  
Horizontal Datum: GDA 1984  
Grid: GDA 1984 MGA Zone 58



Department of Transport and Main Roads  
Bruce Highway – Cooroy to Curra  
(Section D: Woondum to Curra)

Job Number 41-29914  
Revision 0  
Date 21 Feb 2019

**Contract 1 - Fauna Exclusion Fencing**

G:\4129914\GIS\Map\SWP\01\Environment\41\_29914\_0091\_06BC\_7.gdb\_1\_Contract1a3\_Rev0.mxd | G Innovation Parkway Birtinya QLD 4575 Australia T 61 7 5413 8100 F 61 7 5413 8199 E info@ghd.com W www.ghd.com  
© 2019. All survey data has been taken to prepare this map. GHD and DATA CUSTODIANS make no representations or warranties about its accuracy, reliability, completeness or suitability for any particular purpose and cannot accept liability and responsibility of any kind (whether in contract, tort or otherwise) for any such data, losses, damages or costs (including consequential damage) which are or may be incurred by any party as a result of the map or its use, in whole or in part, in any way and for any reason. Data source: GA, TMR, Aerial Imagery (2018), Survey Area (2018), DNRMS Railway Watercourse (2018), Road (2018), GHD Project Area (March 2017), Patta Fazio (2018). Created by: KJ



**Attachment C2 – map of fauna exclusion fencing for Koala and Black-breasted Button-quail located at northern section (Contract 2) of impact site – exclusion fencing marked as purple lines on impact site**



**LEGEND**

Watercourse	Local Connector Road	Contract 2
Railway	Street/Local Road	Survey Area
Highway	Project Area	Protected Areas
Secondary Road	Contract 1	Fauna Exclusion Fencing

Based on or certain data provided by the State of QLD (2018). In consideration of the State permitting use of this data you acknowledge and agree that the State gives no warranty or liability in relation to the data including accuracy, reliability, completeness, currency or usability. Any errors or liability including without limitation liability in negligence or otherwise, damages or costs (including consequential damages) relating to any use of the data. Data must not be used for marketing or be used in breach of the privacy laws.

1:45,000 @ A3

Map Projection: Universal Transverse Mercator  
Horizontal Datum: GDA 1984  
Grid: GDA 1984 MGA Zone 56



Department of Transport and Main Roads  
Bruce Highway – Cooroy to Curra  
(Section D: Woondum to Curra)

Job Number	41-29914
Revision	0
Date	20 Feb 2019

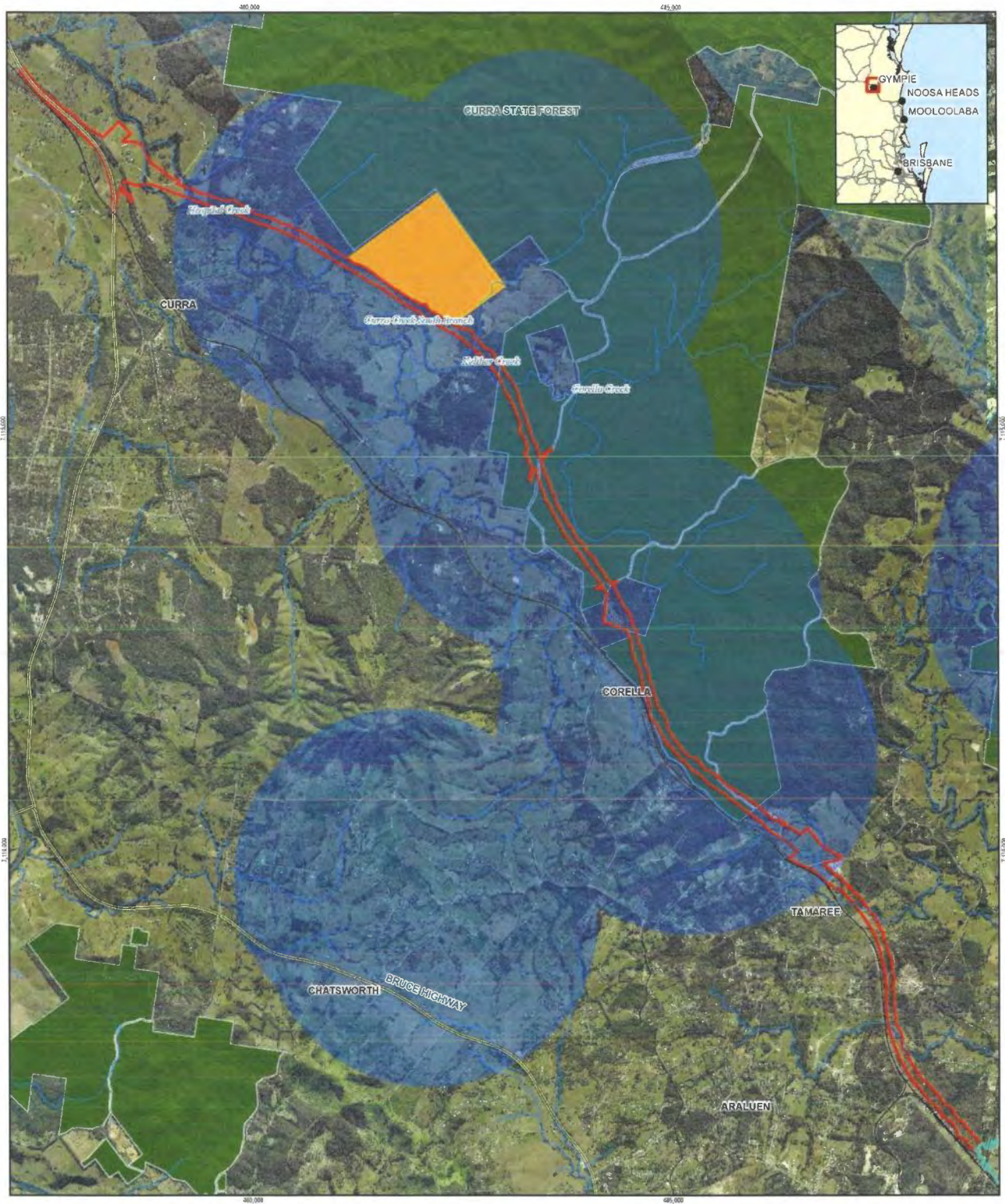
**Contract 2 - Fauna Exclusion Fencing**

6 Innovation Parkway Brisbane QLD 4075 Australia T 61 7 5413 8100 F 61 7 5413 8199 E bta01@mail@ghd.com W www.ghd.com

© 2018. While every effort has been taken to ensure this map (GHD) and DATA (CUSTOMER) are accurate, complete and up-to-date, GHD and CUSTOMER make no representation or warranty about its accuracy, reliability, completeness or suitability for any particular purpose and cannot accept liability and responsibility of any kind. Neither in contract, tort or otherwise for any expenses, losses, damages or other costs (including indirect or consequential damages) which are or may be incurred by any party as a result of the map being inaccurate, incomplete or unreliable in any way and for any reason. Data source: DA 11061 (2014), 1:50,000 Imagery (2016), Survey Area (2016), GHD, Railways, Watercourse (2014), Road (2016), GHD Project Area (March 2015), Fauna Pocket (2016). Created by: KA



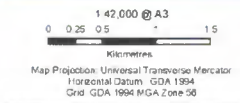
**Attachment D – map of translocation site for Pineapple Zamia located at northern section (Contract 2) of impact site – translocation site marked in yellow next to impact site**



**LEGEND**

- Town
- Secondary Road
- Watercourse
- Railway
- Highway
- Local Connector Road
- Street/Local Road
- Project Area
  - Contract 1
  - Contract 2
  - Protected Areas
- High Risk Flora Trigger Area
- MPG Translocation Site
- MPG - Macrozamia paul-guilelmi

Based on occurrence data provided by the State of QLD (DNRME) 2018, in consideration of the State permitting use of this data your acknowledgement and agrees that the State gives no warranty in relation to the data (including accuracy, reliability, completeness, currency or suitability) and accepts no liability (including without limitation, liability in negligence) for any loss, damage or costs (including consequential damages) relating to any use of the data. Data must not be used for marketing or be used in breach of the privacy laws.



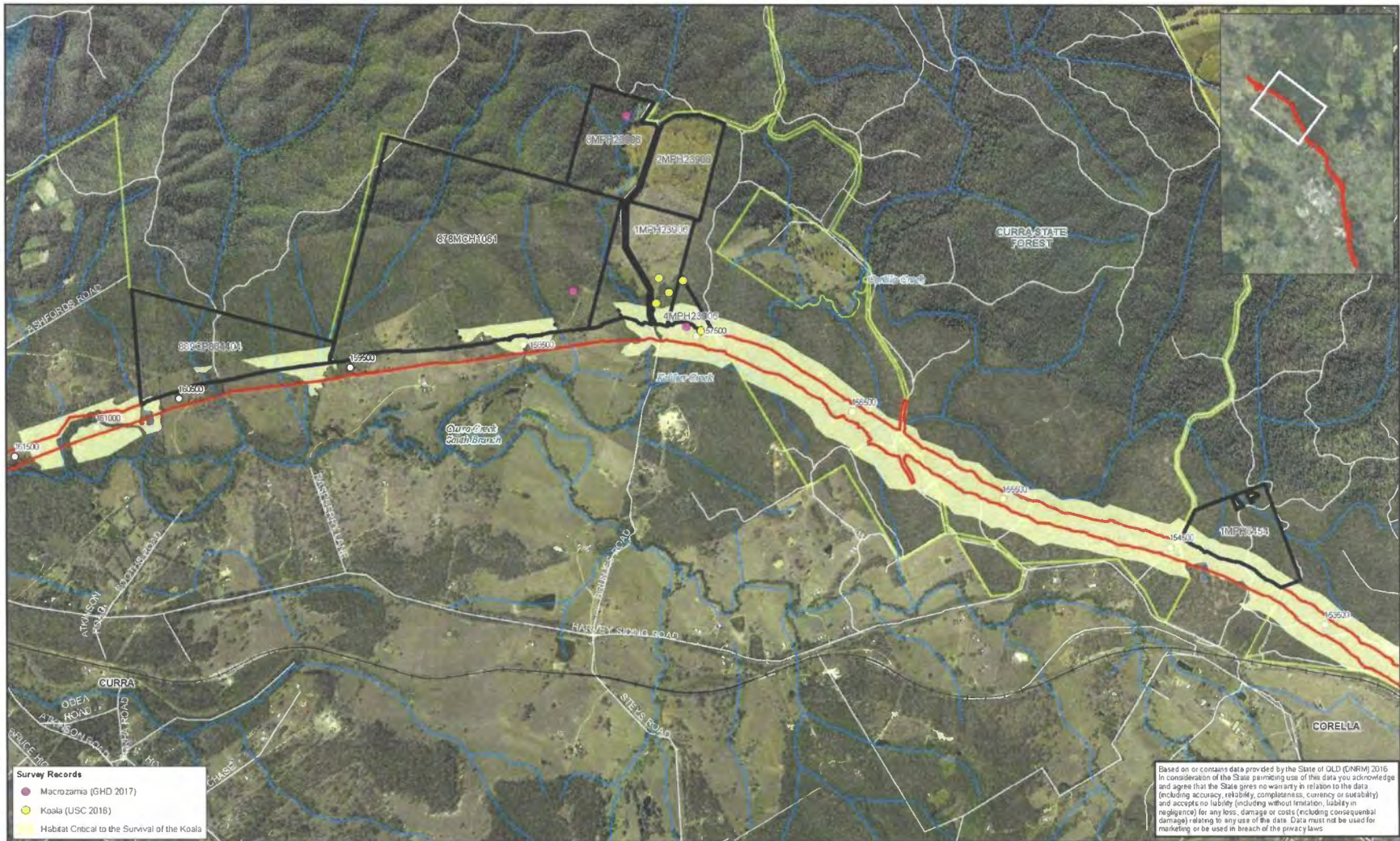
Department of Transport and Main Roads  
Bruce Highway – Cooroy to Curra  
(Section D: Woondum to Curra)

Job Number 41-29914  
Revision 0  
Date 25 Feb 2019

**Locality Plan**



**Attachment E1 – map of Koala offset areas located at northern section of impact site – offset areas contained within areas bounded by black lines on northern side of impact site**



Paper Size A3  
0 250 500  
Metres

Map Projection: Universal Transverse Mercator  
Horizontal Datum: GDA 1994  
Grid: GDA 1994 MGA Zone 55

**Department of Transport and Main Roads**  
Bruce Highway Cooroy to Curra  
(Section D: Woodnum to Curra)

Job Number: 41-29914  
Revision: 2  
Date: 22 Mar 2019

**GHD**

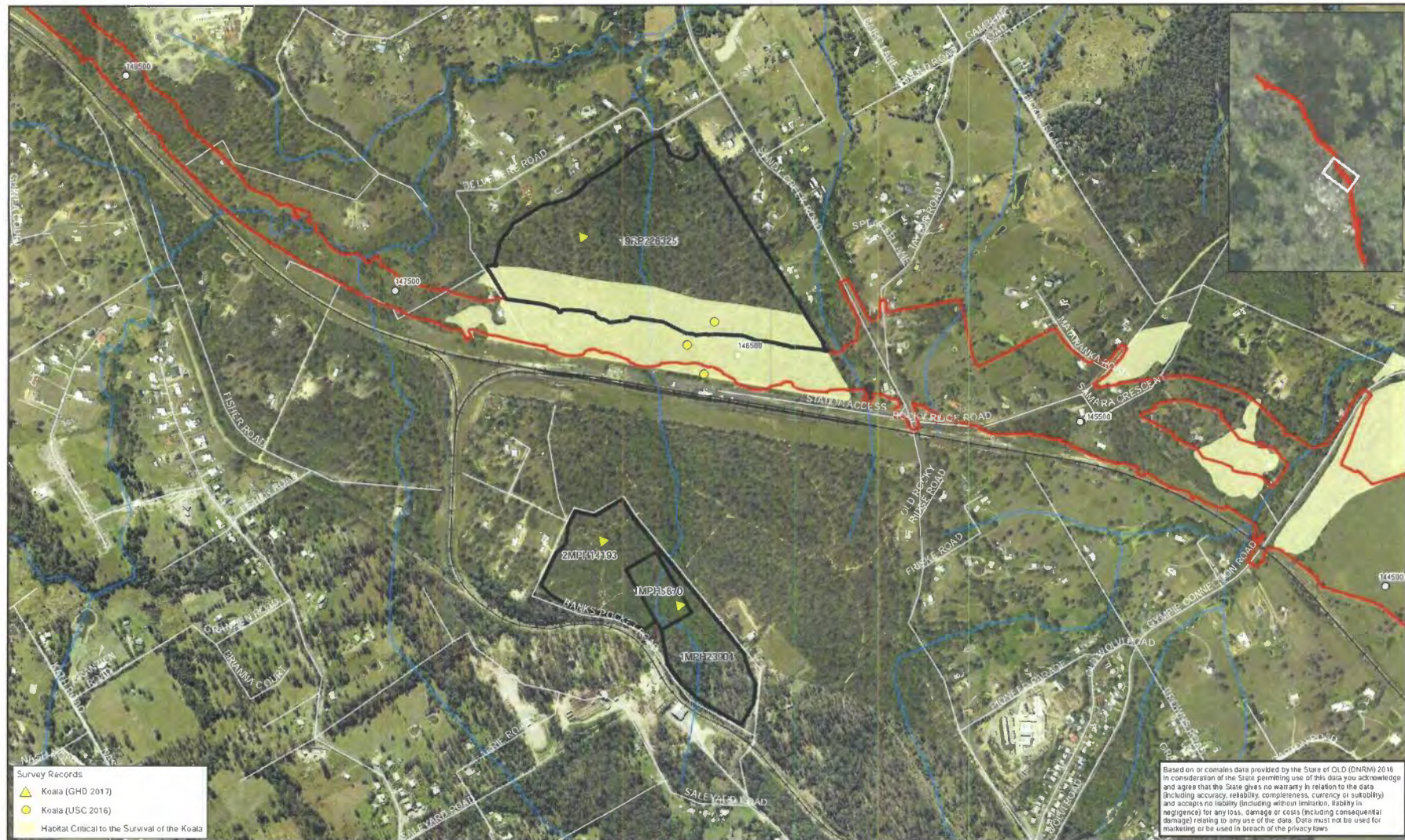
**Offset Sites Locality Plan**

6 Innovation Parkway Brisbane QLD 4575 Australia T 61 7 5413 8100 F 61 7 5413 8199 E [btm1@mail@ghd.com](mailto:btm1@mail@ghd.com) W [www.ghd.com](http://www.ghd.com)

© 2019. Whilst every care has been taken to prepare this map, TMR, GHD and ENRIM make no representation or warranty about the accuracy, reliability, completeness or suitability for any particular purpose and cannot accept liability and responsibility of any kind (whether in contract, tort or otherwise) for any inaccuracies, losses, damages and/or costs (including indirect or consequential damages) which are or may be incurred by any party as a result of the map being inaccurate, incomplete or unsuitable in any way and for any reason. Data source: DIRM Watercourses (2010), RE H (2010), RA (2014), Roads (2015), TMR (2015), Protected Area (2014), TMR Imagery, Survey Area, Chainage Areas Australia (2016), GHD Project Area (December 2016), Survey Site (2017), Koala Habitat (2017). Created by ACJ/John



Attachment E2 – map of Koala offset areas located at central section of impact site – offset areas contained within areas bounded by black lines



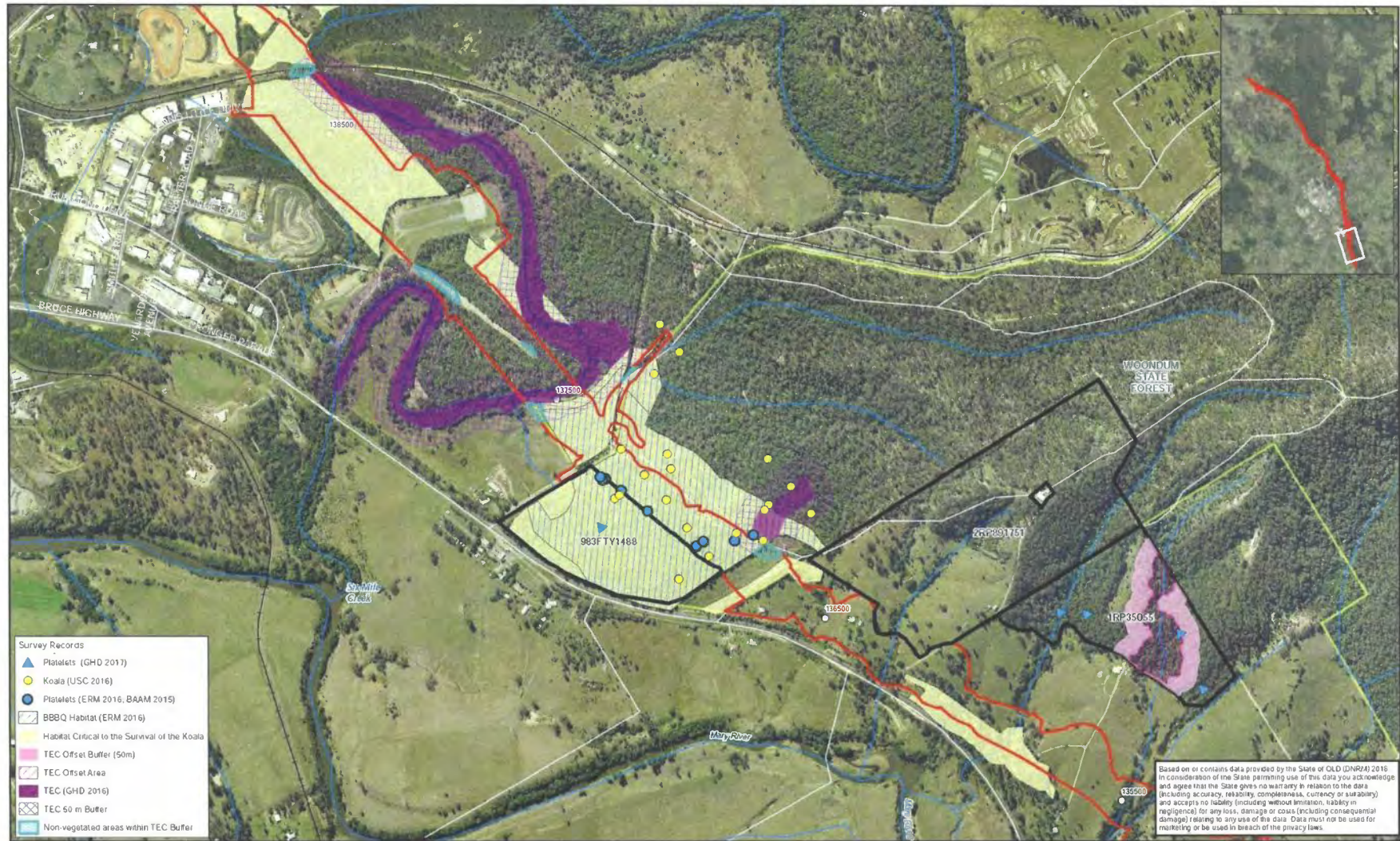
<p>Paper Size A3</p> <p>0 250 500 Metres</p> <p>Map Projection: Universal Transverse Mercator Horizontal Datum: GDA 1994 Grid: GDA 1994 MGA Zone 56</p>	<p><b>LEGEND</b></p> <ul style="list-style-type: none"> <li>○ 1km Chainage</li> <li>— Street/Local Road</li> <li>— Watercourses</li> <li>— Secondary Road</li> <li>— Road/Track</li> <li>— Local Connector Road</li> <li>■ Offset Sites</li> <li>■ Project Footprint</li> </ul>	<p>Department of Transport and Main Roads Bruce Highway Cooroy to Curra (Section D: Woodnum to Curra)</p> <p><b>Offset Sites Locality Plan</b></p>	<table border="0"> <tr> <td>Job Number</td> <td>41-29914</td> </tr> <tr> <td>Revision</td> <td>2</td> </tr> <tr> <td>Date</td> <td>22 Mar 2019</td> </tr> </table>	Job Number	41-29914	Revision	2	Date	22 Mar 2019
Job Number	41-29914								
Revision	2								
Date	22 Mar 2019								

6 Innovation Parkway Brisbane QLD 4575 Australia T 61 7 5413 8100 F 61 7 5413 8199 E btd@tmain@ghd.com W www.ghd.com

© 2019. Whilst every care has been taken to prepare this map, TMR, GHD and DNRM make no representations or warranties about the accuracy, reliability, completeness or suitability for any particular purpose and cannot accept liability or responsibility for any third party in its use. No part of this map may be reproduced, stored in a retrieval system, or transmitted in any form or by any means, electronic, mechanical, photocopying, recording, or otherwise, without the prior written permission of GHD. Data source: DNRM: Watercourse (2015), RE v6 (2016), RA (2014), Roads (2016), Towns (2016), Protected Areas (2014), TMR: Imagery, Survey Area, Chainage, Area Released (2016), GHD: Project Area (December 2016), Survey Site (2017), Koala Habitat (2017). Created by A.Cleaton



**Attachment F – map of Koala and Black-breasted Button-quail offset areas located at southern section of impact site – offset areas contained within areas bounded by black lines**




 Department of Transport and Main Roads  
 Bruce Highway Cooroy to Curra  
 (Section D: Woodnum to Curra)

**Job Number:** 41-29914  
**Revision:** 2  
**Date:** 22 Mar 2019

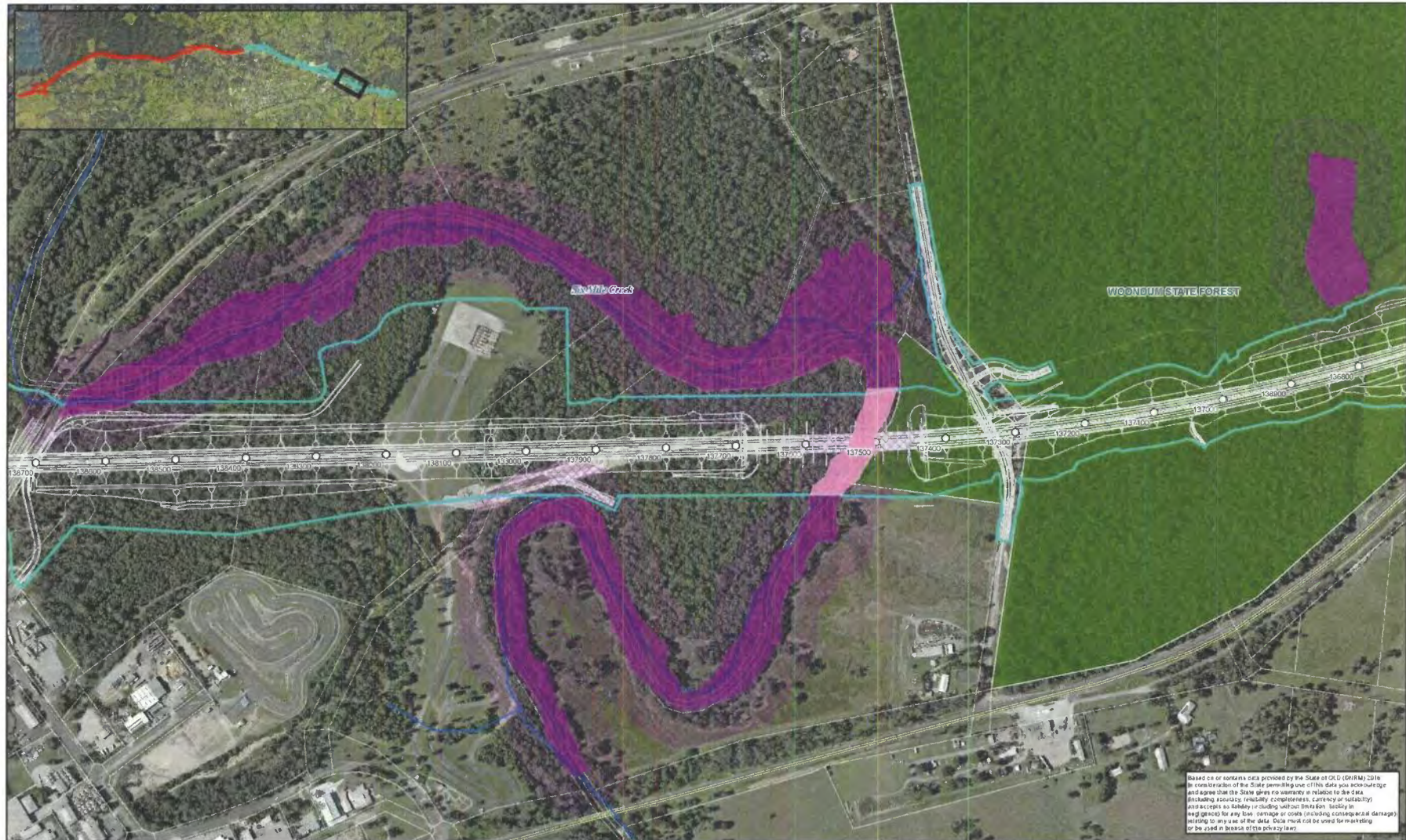
**Offset Sites Locality Plan**

6 Innovation Parkway Birtinya QLD 4575 Australia T 61 7 5413 8100 F 61 7 5413 8189 E btd@mail@ghd.com W www.ghd.com

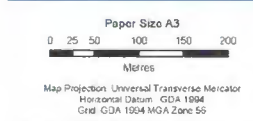
© 2019. Where every care has been taken to prepare this map, TMR, GHD and DRRM make no representations or warranties about its accuracy, reliability, completeness or suitability for any particular purpose and cannot accept liability and responsibility of any kind (whether in contract, tort or otherwise) for any expenses, losses, damages or other costs (including indirect or consequential damage) which are or may be incurred by any party as a result of the map being inaccurate, incomplete or unsuitable in any way and for any reason. Data source: DNRM Watercourse (2016), RE (2016), RA (2014), Roads (2016), Towns (2019), Protected Areas (2014), TMR (Legacy), Survey Area, Chainage, Areas Assessed (2016), GHD Project Area (December 2016), Survey Site (2017), Koala Habitat (2017). Created by A. Jackson.



Attachment G – map of riparian area for lowland rainforest ecological community located along Six Mile Creek - marked as purple shaded area along Six Mile Creek only



Based on or some data provided by the State of QLD (DNRMR) 2016 in consideration of the State permitting use of the data you acknowledge and agree that the State gives no warranty in relation to the data. (Including accuracy, reliability, completeness, currency or suitability) and accepts no liability (including without limitation liability in negligence for any loss, damage or costs (including consequential damage) resulting from use of the data. Data must not be used for marketing or be used in breach of the privacy laws.



LEGEND	
○ 100m Change	Watercourse
▬ Highway	Cadastral Boundary
▬ Local Connector Road	Protected Areas
▬ Street/Local Road	Project Area
	Contract 1
	Contract 2
	TEC (GHD 2016)
	TEC 50 m Buffer
	EPBC Act Impact Areas
	TEC Direct Impact
	TEC Indirect Impact



Department of Transport and Main Roads  
Bruce Highway Cooroy to Curra  
(Section D: Woondum to Curra)

Lowland Rainforest of Subtropical  
Australia TEC - Direct Impact

Job Number	41-29914
Revision	A
Date	11 Apr 2019

© 2019. Whilst every care has been taken to create this map, GHD, TMR and DNRMR make no representations or warranties about its accuracy, reliability, completeness or suitability for any particular purpose and cannot accept liability or responsibility of any kind (whether in law or in equity) for any damages, whether direct or consequential, which are or may be incurred by any party as a result of the map. This map is for informational purposes only and is not intended to be used for any other purpose. Data sources: GHD; TEC; TEC 50m Buffer (2016); TMR; Ingsley (2014); DNRMR; Cadastral (2016); Valuers (2016); Road Network (2018); Protected Areas (2014); GHD; Project Area (March 2017); Road Design (November 2016); EPBC Act Impact Areas (2018); Created by: [Name]