



Direct Sunshine Coast Rail Line

Nirimba (Aura) station

Nirimba is a suburb within Aura, Australia's largest residential development project. Aura will provide approximately 20,000 new dwellings and be home to approximately 50,000 people.

Nirimba station is proposed to be located adjacent to the site earmarked for the Aura town centre. The station placement is compatible with the Aura master plan. It is proposed to be located at street level with side platforms to allow direct connectivity between the town centre precinct and station platforms.

The following features are proposed to be included in the design for Nirimba station.

- Accessible station with two tracks, serviced by side platforms. These platforms will be future-proofed to accommodate 9-car trains.
- Station facilities including ticket office, public toilets, end-of-trip facilities (cycle and scooter storage), CCTV and lighting.

- Bus interchange and kiss 'n' ride (drop off zone).
- A park 'n' ride location and configuration is still under investigation. Transport demand modelling at this location will inform the number of park 'n' ride spaces that are planned.
- Active transport connections are proposed to be included. These facilities will connect to the planned active transport network within the Aura master plan.

What you told us about Nirimba (Aura) station

- The park 'n' ride should accommodate the future growth of the development area

- Feedback about platform and rail line configuration
- Accessible design for disability access (platforms and all elements of the station, including facilities)
- Importance of storage for bicycles and scooters
- Feedback about architectural design elements, materials and signage
- Importance of safety and security at the station
- Importance of ample shade and weather protection
- Connection between the station and sports fields should be considered

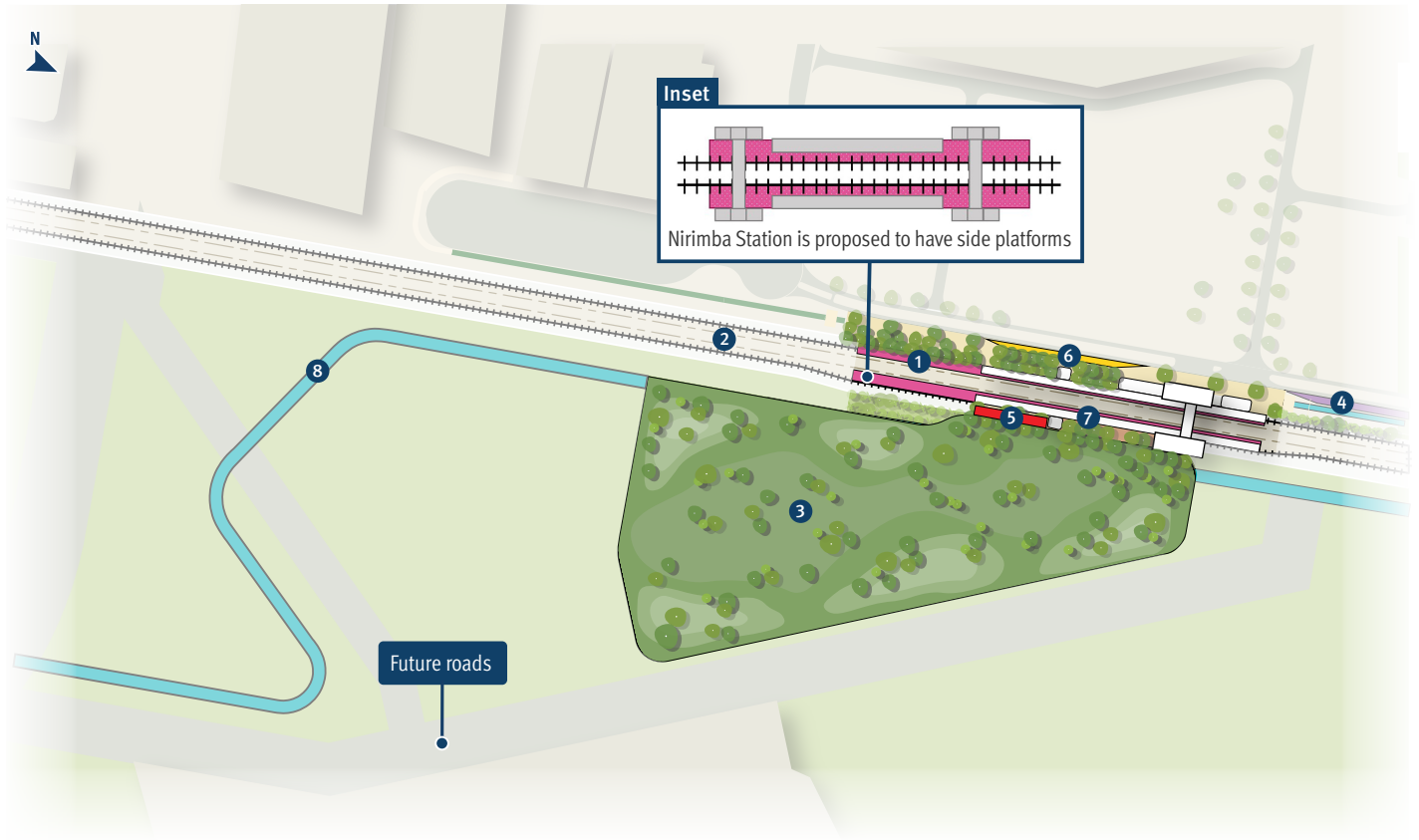


TMR undertook consultation on the Direct Sunshine Coast Rail Line stations in mid-2023. The community was encouraged to provide feedback on the alignment, stations and active transport.

How this is being considered in the business case design

- All new and upgraded stations will be accessible for all customers.
- All stations will have storage for cycling and scooters.
- Safety and security has been considered in the design of all stations (appropriate lighting levels, well monitored waiting environments, spaces that allow for passive surveillance and observation of the station, security cameras in operational areas, visual monitoring of the station/precinct).
- Platform shelters and shaded waiting areas have been accommodated in the design of all stations.
- Active transport links between the station and proposed sports precincts have been considered and included in the concept design.
- Park 'n' ride design and access to and from the station will consider the future growth of this area, with design to accommodate the ultimate master plan.
- The business case design for all stations includes concept designs for platform configuration and the station building. Detailed design, including more specific details about station facilities, will be undertaken in future phases of the project. Community feedback received during the business case phase will be considered in detailed design.

Nirimba station map (updated concept layout)



Legend

- ① Station platforms (street level station, double-side platforms) - see inset
- ② Dual track
- ③ Landscaping
- ④ Kiss 'n' ride
- ⑤ Disability parking bays and station staff parking
- ⑥ Bus bays
- ⑦ Cycle storage
- ⑧ Pedestrian and bicycle (active transport) connections

All double-side platform stations to include lifts and stairs between platforms.
Options are being investigated for the Nirimba (Aura) park 'n' ride location.

Nirimba (Aura) station access and features

Getting to and from stations

In addition to connections with the Sunshine Coast Public Transport project, the Direct Sunshine Coast Rail Line project includes upgrades to the bus network to ensure communities along the route have efficient connections to stations.

In line with the Southern Sunshine Coast Public Transport Strategy, we're planning to introduce new routes between stations, key destinations, and surrounding areas. This will improve travel right across the region.



Scan the QR code to view all DSC Rail Line station concept layouts and a map of proposed corridor refinements.



Accessibility

All stations will be accessible to everyone in our community.



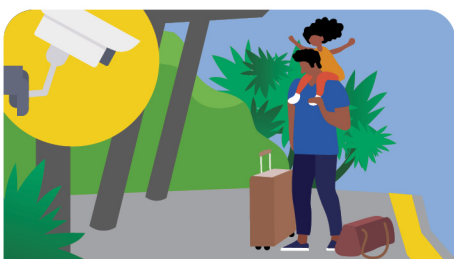
Active transport

To support active transport options, stations will feature facilities and infrastructure to accommodate bikes and other micro-mobility devices.



Passenger comfort

Seating, shelters and nearby water refill points will ensure comfortable journey experiences, with toilets provided at major interchange stations.



Safety

In accordance with Crime Prevention Through Environmental Design (CPTED) principles, stations will include CCTV cameras, lighting and help points.



Ticketing and information

Customer information will be provided via display screens, timetables and hearing loops, with ticketing facilities also included.

Contact us

- 1800 407 533 (8.30am to 4.30pm)
- scpublictransport@tmr.qld.gov.au
- Sunshine Coast Public Transport Department of Transport and Main Roads PO Box 1600 Maroochydore QLD 4558