

15 July 2025

TMR Community Media Alert

Have your say - Proposed 6-Knot speed limit for Baffle Creek

Maritime Safety Queensland (MSQ) is seeking community feedback on a proposal to introduce speed limits for boating in two sections of Baffle Creek.

Baffle Creek currently has no gazetted speed limits. MSQ proposes to introduce 6-knots speed limits for a 500-metre section of the creek adjacent to the boat ramp at Rocky Point Road, and a 385-metre section adjacent to the south bank of the creek at Winfield Road, Winfield.

The proposal has been developed following complaints from the public about boats travelling at unsafe speeds in these areas of the creek.

These issues include damage from vessel wash to jetties, private properties, moored vessels, and boat ramps.

Reducing the speed limit should help reduce the problems caused by vessel wash and enhance safety for the area.

This will include creating a more stable environment for boaties when entering or exiting their boats at the boat ramps.

Consultation will commence on 16 July and will run on the Queensland Government - *Have your say website* [here](#) for 28 days.

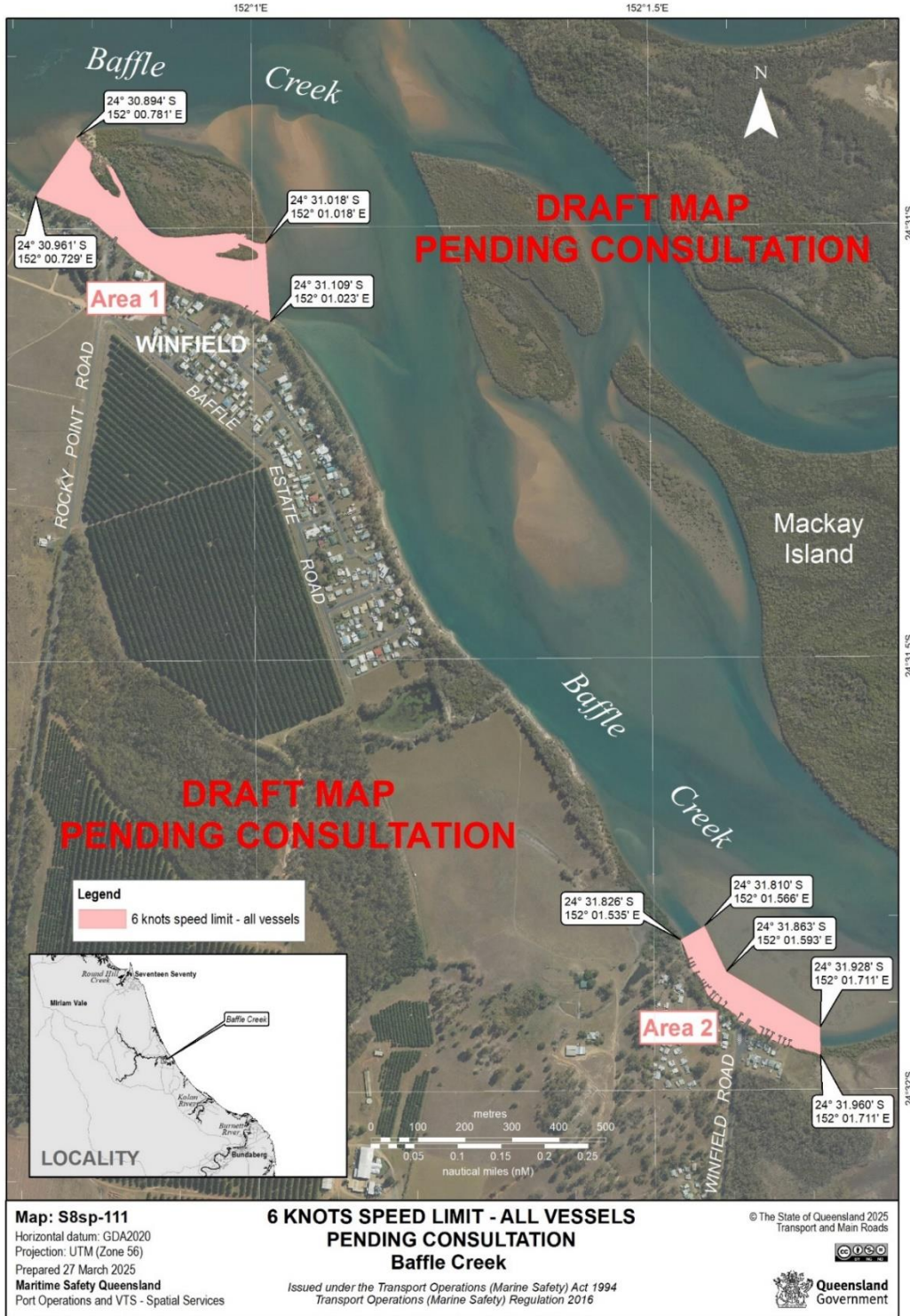
Public feedback will be used to produce a report indicating the level of community support for the proposal.

The consultation outcome will be published on MSQ's website.

MSQ will gazette any speed limit changes after consideration of the report.

More information on how the public can get involved and provide its views can be found on [MSQ's website](#).

ENDS





Baffle Creek