



Centreline Tools

- Home
- Layers
- Navigation
- Tools
- Print
- Help
- Close

Layer Control

- Layers
- Visibility
- Order
- Color
- Scale
- Close

T C B R

Find Tool

- Home
- Layers
- Navigation
- Tools
- Print
- Help
- Close

Road 202 - C  
Dist 0.118

Road 202 - CW  
Dist 0.167km



Centreli

Layer Co

T C

Find Tool

Road 202 - CW1  
FDist 0.108km

Road 202 - CW1  
FDist 0.167km

Released under RTI - DTMR

# Item

## ITEM DETAILS

<b>Item ID:</b>	174560 - PDO	<b>Item Type:</b>	Email
<b>Date Created:</b>	06/01/2016	<b>Project ID:</b>	
<b>Date Captured:</b>	06/01/2016	<b>Sub Project ID:</b>	
<b>Item Format:</b>	Electronic	<b>Other Reference:</b>	
<b>Circulation:</b>		<b>Copies Sent To:</b>	
<b>Subject:</b>	Mail Memo - RE: Works request 54 Beaudesert Nerang Road 202 Tdist 0.108 to 0.167		
<b>Function Term:</b>	TRAFFIC AND INTELLIGENT TRANSPORT SYSTEMS	<b>Activity Term:</b>	TRAFFIC CONTROL DEVICES REQUESTS
<b>Container Title:</b>	Scenic Rim Region - Signage	<b>Container ID:</b>	517/00204 [1]

<b>Author:</b>	PI	<b>Corporate Author:</b>	
<b>Author Title / Position:</b>	Senior Traffic Officer	<b>Complaint Classification:</b>	
<b>Business Unit:</b>	Preservation and Maintenance		
<b>Action Officer:</b>			
<b>Home Location:</b>	Information Management Compactus - Ground Floor, 36-38 Cotton Street, Nerang	<b>Last Movement Date:</b>	06/01/2016

## SECURITY & ACCESS

<b>Security Classification:</b>	UNCLASSIFIED INFORMATION		
<b>Security Access:</b>	Unrestricted		

## ADDITIONAL INFORMATION

<b>Description / Additional Info:</b>	
---------------------------------------	--

## DOCUMENT CONTENTS

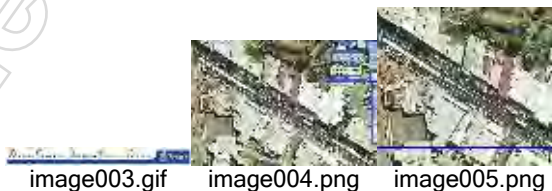
RE: Works request 54 Beaudesert Nerang Road 202 Tdist 0.108 to 0.167

**Subject** RE: Works request 54 Beaudesert Nerang Road 202 Tdist 0.108 to 0.167

**From** PI tmr.qld.gov.au  
**To** @tmr.qld.gov.au  
**Cc** PI @tmr.qld.gov.au PI @tmr.qld.gov.au

**Bcc**  
**Sent** 6/01/2016 8:00:38 AM

**Attached**



Thanks PI sounds good.

**Regards**

PI

PI

Senior Traffic Officer | South Coast Region  
Program Delivery And Operations | Department of Transport and Main Roads

Ground Floor | Nerang TMC | 16-18 White Street | Nerang Qld 4211  
PO Box 442 | Nerang Qld 4211  
P: (07) PI F: (07) 55636611  
E: PI @tmr.qld.gov.au  
W: [www.tmr.qld.gov.au](http://www.tmr.qld.gov.au)

**From:** PI  
**Sent:** Wednesday, 16 December 2015 2:58 PM  
**To:** PI @tmr.qld.gov.au>  
**Cc:** PI @tmr.qld.gov.au>  
**Subject:** FW: Works request 54 Beaudesert Nerang Road 202 Tdist 0.108 to 0.167

PI

This road is programed to long line in Feb we can added to that if you like

Kind regards,

PI

Senior Supervisor | Linemarking (Operations Gold Coast)  
RoadTek | Department of Transport and Main Roads

Ground Floor | Coombabah Depot | Banyula Drive | Nerang Qld 4211  
PO Box 397 | Nerang Qld 4211  
P: (07) PI F: (07) 55613453  
M: NR  
E: PI @tmr.qld.gov.au  
W: [www.tmr.qld.gov.au](http://www.tmr.qld.gov.au)

**From:** PI  
**Sent:** Thursday, 10 December 2015 2:36 PM  
**To:** PI @tmr.qld.gov.au>  
**Cc:** PI @tmr.qld.gov.au>; PI @tmr.qld.gov.au>

**Subject:** Works request 54 Beaudesert Nerang Road 202 Tdist 0.108 to 0.167

It looks like I forgot to send this one through previously. Could you please provide a quote?

Regards

PI

Senior Traffic Officer | South Coast Region  
Program Delivery And Operations | Department of Transport and Main Roads

Ground Floor | Nerang TMC | 16-18 White Street | Nerang Qld 4211  
PO Box 442 | Nerang Qld 4211  
P: (PI) F: (07) 55636611  
E: PI @tmr.qld.gov.au  
W: [www.tmr.qld.gov.au](http://www.tmr.qld.gov.au)

**From:** PI  
**Sent:** Monday, 26 October 2015 3:33 PM  
**To:** PI @tmr.qld.gov.au>  
**Subject:** linemarking request Beaudesert Nerang Road 202 Tdist 0.108 to 0.167

Hello

PI

Can you arrange for the installation of double white lines at the Beaudesert Nerang Road approach to the signalised intersection at Beaudesert. Tdist as per the aerial below and double lines as per the sketch below. There are still a number of motorists driving straight into the reverse parking areas across the centre line despite new reverse in signage and the double white will allow enforcement by police.

Aerial Tdist

Double lines sketch

Kind regards,

PI

Engineer (Civil), PD&P | South Coast Region / Gold Coast Office  
Program Delivery & Operations Branch | Department of Transport and Main Roads

Ground Floor | 36-38 Cotton Street | Nerang Qld 4211

PO Box 442 | Nerang Qld 4211

P: PI F: (07) 5596 9511

M: NR

E: PI @tmr.qld.gov.au

W: [www.tmr.qld.gov.au](http://www.tmr.qld.gov.au)

**From:** PI  
**Sent:** Monday, 26 October 2015 3:33 PM  
**To:** PI  
**Subject:** linemarking request Beaudesert Nerang Road 202 Tdist 0.108 to 0.167

Hello PI

Can you arrange for the installation of double white lines at the Beaudesert Nerang Road approach to the signalised intersection at Beaudesert. Tdist as per the aerial below and double lines as per the sketch below. There are still a number of motorists driving straight into the reverse parking areas across the centre line despite new reverse in signage and the double white will allow enforcement by police.



Aerial Tdist



Double lines sketch

Kind regards,

PI

Engineer (Civil), PD&P | South Coast Region / Gold Coast Office  
Program Delivery & Operations Branch | Department of Transport and Main Roads

Ground Floor | 36-38 Cotton Street | Nerang Qld 4211  
PO Box 442 | Nerang Qld 4211

P: PI F: (07) 5596 9511

M: NR

E: PI @tmr.qld.gov.au

W: [www.tmr.qld.gov.au](http://www.tmr.qld.gov.au)

# Item

## ITEM DETAILS

<b>Item ID:</b>	185896 - PDO	<b>Item Type:</b>	Email
<b>Date Created:</b>	27/04/2016	<b>Project ID:</b>	
<b>Date Captured:</b>	03/05/2016	<b>Sub Project ID:</b>	
<b>Item Format:</b>	Electronic	<b>Other Reference:</b>	
<b>Circulation:</b>		<b>Copies Sent To:</b>	
<b>Subject:</b>	Mail Memo - RE: Works request 94 linemarking request Beaudesert Nerang Road 202 Tdist 0.108 to 0.167		
<b>Function Term:</b>	TRAFFIC AND INTELLIGENT TRANSPORT SYSTEMS	<b>Activity Term:</b>	TRAFFIC CONTROL DEVICES REQUESTS
<b>Container Title:</b>	Scenic Rim Region - Signage	<b>Container ID:</b>	517/00204 [1]

## ACTIONS & OWNERSHIP

<b>Author:</b>	PI	<b>Corporate Author:</b>	
<b>Author Title / Position:</b>		<b>Complaint Classification:</b>	
<b>Business Unit:</b>			
<b>Action Officer:</b>		<b>Last Movement Date:</b>	03/05/2016
<b>Home Location:</b>	Information Management Compactus - Ground Floor, 36-38 Cotton Street, Nerang		

## SECURITY & ACCESS

<b>Security Classification:</b>	UNCLASSIFIED INFORMATION	
<b>Security Access:</b>	Unrestricted	

## ADDITIONAL INFORMATION

<b>Description / Additional Info:</b>	
---------------------------------------	--

## DOCUMENT CONTENTS

RE: Works request 94 linemarking request Beaudesert Nerang Road 202 Tdist 0.108 to 0.167

**Subject** RE: Works request 94 linemarking request Beaudesert Nerang Road 202 Tdist 0.108 to 0.167

**From** PI @tmr.qld.gov.au

**To** tmr.qld.gov.au

**Cc** PI @tmr.qld.gov.au

**Bcc**

**Sent** 27/04/2016 2:35:30 PM

**Attached**



image001.png

image002.png

PI

This job has been done I think it was under a different works request anyway it was

completed by our longline crew when they painted that road

Kind regards,

PI

Senior Supervisor | Linemarking (Operations Gold Coast)  
RoadTek | Department of Transport and Main Roads

Ground Floor | Coombabah Depot | Banyula Drive | Nerang Qld 4211

PO Box 397 | Nerang Qld 4211

P: PI F: (07) 55613453

M NR

E: [arthur.j.hilton@tmr.qld.gov.au](mailto:arthur.j.hilton@tmr.qld.gov.au)

W: [www.tmr.qld.gov.au](http://www.tmr.qld.gov.au)

From: PI

Sent: Wednesday, 6 April 2016 1:27 PM

To: PI <PI@tmr.qld.gov.au>

Cc: PI <PI@tmr.qld.gov.au>

Subject: Works request 94 linemarking request Beaudesert Nerang Road 202 Tdist 0.108 to 0.167

Quote please.

Regards

PI

Senior Traffic Officer | South Coast Region  
Program Delivery And Operations | Department of Transport and Main Roads

Ground Floor | Nerang TMC | 16-18 White Street | Nerang Qld 4211

PO Box 442 | Nerang Qld 4211

P: (07) PI F: (07) 55636611

E: PI <PI@tmr.qld.gov.au>

W: [www.tmr.qld.gov.au](http://www.tmr.qld.gov.au)

From: PI

Sent: Wednesday, 6 April 2016 1:18 PM

To: PI <PI@tmr.qld.gov.au>

Subject: FW: linemarking request Beaudesert Nerang Road 202 Tdist 0.108 to 0.167

Kind regards,

PI

Engineer (Civil), PD&P | South Coast Region / Gold Coast Office  
Program Delivery & Operations Branch | Department of Transport and Main Roads

Ground Floor | 16-18 White Street | Nerang Qld 4211

PO Box 442 | Nerang Qld 4211

P: PI F: (07) 5596 9511

M NR

E: [paul.e.botha@tmr.qld.gov.au](mailto:paul.e.botha@tmr.qld.gov.au)

W: [www.tmr.qld.gov.au](http://www.tmr.qld.gov.au)

From: PI

Sent: Monday, 26 October 2015 3:33 PM

To PI [@tmr.qld.gov.au](mailto:PI@tmr.qld.gov.au)>

**Subject:** linemarking request Beaudesert Nerang Road 202 Tdist 0.108 to 0.167

Hello PI

Can you arrange for the installation of double white lines at the Beaudesert Nerang Road approach to the signalised intersection at Beaudesert. Tdist as per the aerial below and double lines as per the sketch below. There are still a number of motorists driving straight into the reverse parking areas across the centre line despite new reverse in signage and the double white will allow enforcement by police.

Aerial Tdist

Double lines sketch

Kind regards,

PI

**Engineer (Civil), PD&P** | South Coast Region / Gold Coast Office  
**Program Delivery & Operations Branch** | Department of Transport and Main Roads

Ground Floor | 36-38 Cotton Street | Nerang Qld 4211

PO Box 442 | Nerang Qld 4211

P: PI F: (07) 5596 9511

M: NR

E: PI [@tmr.qld.gov.au](mailto:PI@tmr.qld.gov.au)

W: [www.tmr.qld.gov.au](http://www.tmr.qld.gov.au)



Released under RTI - DTMR



# Minutes

## Traffic Advisory Committee and Speed Management Advisory Committee meeting

**Date** Wednesday 4<sup>th</sup> March 2015 **Time** 10am to 12pm  
**Place** Scenic Rim Regional Council Chambers, Brisbane Road, Beaudesert

**Chair** [PI] (TMR)

**Minute taker** [PI] (TMR)

### Attendees

[PI] (SRRC)	[PI] (TMR)
[PI] (SRRC)	[PI] (TMR)
[PI] (TMR)	[PI] (TMR)
[PI] (QPS)	[PI] (TMR)
[PI] (QPS)	

### Apologies

[PI] (RACQ)	[PI] (QPS)
[PI] (TMR)	[PI] (TMR)
[PI] (TMR)	[PI] (QPS)

**Approval of minutes from last meeting**  
**4 December 2014**

**Outstanding actions from last meeting** 10 minutes

Not Relevant

Released under RTI - DTMR

# TAC

Not Relevant



**Agenda item 4 General Business**

15 minutes

Not Relevant

**2.** Williams Street Beaudesert people not reversing in. Reverse in signage to be installed. TMR to look at changing linemarking to double lines from traffic lights to Anna St where median ends JM was investigating.

Not Relevant

Released under RTI - DTMR

# Minutes

## Traffic Advisory Committee and Speed Management Advisory Committee meeting

**Date** Thursday 9<sup>th</sup> December 2015      **Time** 10am to 12pm  
**Place** Scenic Rim Regional Council Chambers, Brisbane Road, Beaudesert

**Chair** [PI] (TMR)

**Minute taker** [PI] (TMR)

### Attendees

- [PI] SRRC)
- [PI] (SRRC)
- [PI] (QPS)
- [PI] (TMR)
- [PI] TMR)
- [PI] (TMR)

### Apologies

- [PI] (TMR)
- [PI] (RACQ)
- [PI] QPS)
- [PI] (QPS)
- [PI] (QPS)
- [PI] (TMR)
- [PI] (TMR)
- [PI] (SRRRC)

**Approval of minutes from last meeting**  
June 2015

**Outstanding actions from last meeting**

10 minutes

Not Relevant

<b>TMR</b>	Williams Street Beaudesert people not reversing in. Reverse-in signage has been installed however TMR to look at changing line marking to double lines from traffic lights to Anna St where median ends. SJ will discuss with JM regarding implementation to enable additional enforcement of the signage. Works order sent	4/03/15	<b>Closed</b>
------------	---	---------	---------------

Not Relevant

Released under RTI - DTMR

Released under RTI - DTMR

# Technical Note

Date 13 February 2025

**Subject** Installation of double barrier line marking on Beaudesert Nerang Road, near the intersection with Bayford Street

**Location** Beaudesert Nerang Road (TMR state-controlled road 202 (chainage 0.108km to 1.67km) near the intersection with Bayford Road. Beaudesert Nerang Road is locally referred to as William Street.

## Introduction

### Purpose

This technical note has been prepared to provide further information in relation to a short section of double barrier line marking installed on Beaudesert Nerang Road, near the intersection of Bayford Street in Beaudesert. There has been a right to information request regarding the installation of this line marking. The location, which is generally between Chainage 0.108km and 0.167km is shown in Figure 1.

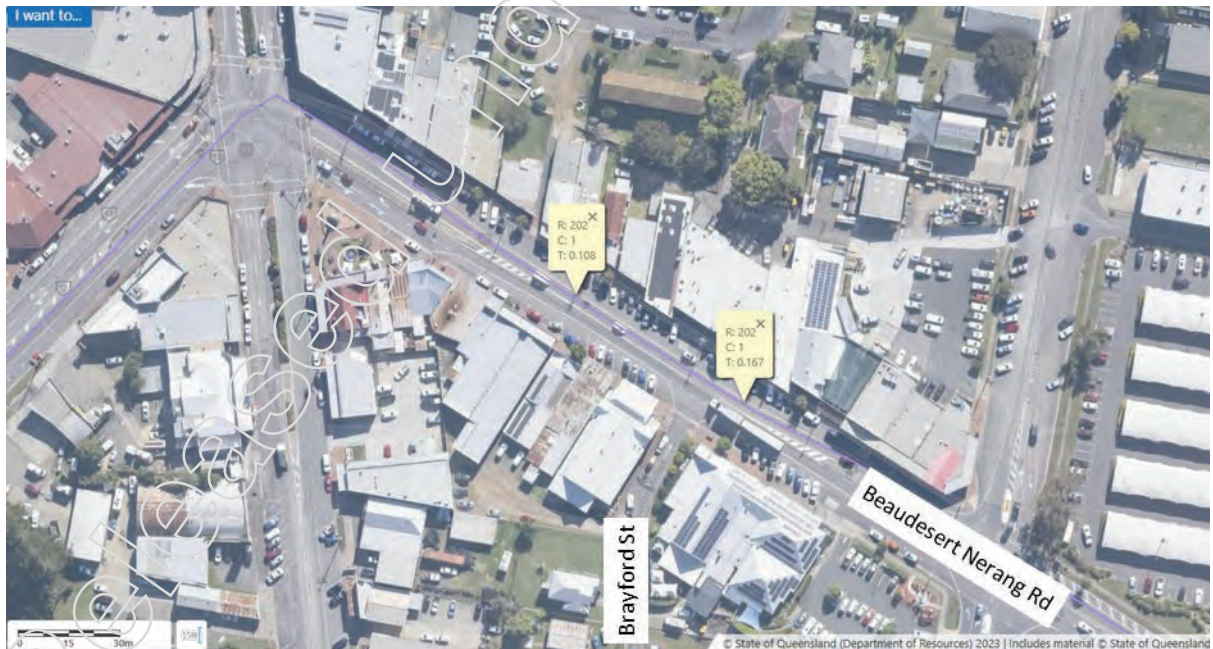


Figure 1 Aerial – Locality Map

## Site Details

- Length of double barrier line:
  - Section 1: approximately 42m (between Chainage 0.108km to 0.150km)
  - Section 2: approximately 7m (between Chainage 0.160km and 0.167km)
- Environmental Class/ Road Class: Urban Arterial.
- Lane configuration: two-lane undivided road.
- On-street parking: predominantly angled, reverse in parking.
- AADT: 7,470vpd; 15.34%HV (survey year: 2023, survey site: 11427).
- Speed limit: 50km/h.
- Crash history: reviewed for the subject section between Chainage 0.1km to 0.2km. The recent five-year period 01/05/2019 to 30/04/2024 reported no crashes. An extended search of 01/03/2015 to 30/04/2024 which covers the full history since this line marking was identified for installation and subsequently installed, also reported no crashes.

## Background

- A Scenic Rim Traffic Advisory Committee (TAC) and Speed Management Advisory Committee (SMAC) meeting was held on 04/03/2015. This committee includes members from Transport and Main Roads (TMR), the Queensland Police Service (QPS), Scenic Rim Regional Council (SRRC) and RACQ. In the meeting, the subject section of Beaudesert Nerang Road was raised. Specifically, there were issues with vehicles crossing the oncoming traffic lane and nosing forwards into the angled parking bays. It was noted in the meeting that TMR was investigating options. In a subsequent TAC and SMAC meeting held on 09/12/2015 it was noted that reverse-in signage had been installed, however vehicles were continuing to nose in to the parking spaces. It was discussed that TMR would look at changing the line marking to double barrier line marking and that a request for works had been sent. The intent of the double barrier line marking was improving safety by stopping vehicles crossing the oncoming lane by legally restricting vehicles turning across the centre line to access the reverse-in parking and to enable enforcement by QPS if necessary.
- A request for the double barrier line marking to be installed was initiated via email on 26/10/2015
- A review of historical road imagery from TMR's DVR database shows a broken centreline in place for the recording taken on 17/11/2015 (refer Figure 2). The next DVR recording on 01/03/2017 shows a double barrier line in place (Refer Figure 3). Historical Google Earth imagery shows the broken centreline in place in on 13/01/2016 and a double barrier line in place 22/04/2016, which indicates the double barrier line installation occurred between these dates.



Figure 2 DVR Imagery 17/11/2015 at Chainage 0.101km (Gazettal direction)



Figure 3 DVR Imagery 01/03/2017 at Chainage 0.099km (Gazettal direction)

# Assessment

## Assessment of Double Barrier Line Marking

As discussed, the broken centre line between Chainage 0.108km to 0.150km and between Chainage 0.160km and 0.167km was replaced with double barrier line marking between 13/01/2016 and a double barrier line in place 22/04/2016. A review of the most recently available DVR imagery shows this double barrier line marking still in place. The installation of double barrier line marking is a standard pavement marking treatment as outlined in Australian Standards AS1742.2 Figure 5.1 Longitudinal lines (dividing and lane) and accepted under Section 5.3 Part 2 of the Queensland Manual of Uniform Traffic Control Devices (MUTCD). Under the Transport Operations (Road Use Management Road Rules) Regulation 2009 (TORUM) Section 132 (3), it is specified that “A driver on a road with 2 continuous dividing lines must drive to the left of the dividing lines, except as permitted under section 139(2) or 139A(2)”. Based on the available DVR imagery it appears the broken line marking was not removed prior to the double barrier line being installed. From the review of imagery, the intent of the installed double barrier line marking is still clear, in that there are clearly two unbroken and continuous lines. It is evident that none of the following conditions apply in this location:

- No centre line marking is in place.
- A single continuous dividing line is in place.
- A single continuous dividing line with a dashed line on one side.



Figure 4 DVR Imagery 26/02/2024 at Chainage 0.104km (Gazettal direction)

# Summary

In summary:

- The location, which is generally between Chainage 0.108km and 0.167km was raised during TAC and SMAC meetings in 2015 due to safety concerns over vehicles crossing over the opposing lane and parking forwards in the angled parking bays on either side.
- Reverse in signage was initially implemented for the parking bays, however, was not successful and did not allow for enforcement by QPS if necessary.
- Subsequently double barrier line marking was installed in early 2016 to legally restrict vehicles from crossing the centreline of the road and to allow enforcement.
- Double barrier lines were implemented generally as per the MUTCD. It appears that the existing broken lines were not removed at that time. Irrespective, the intent of the line marking is evident in that it provides two continuous dividing lines along the centre of the road, which under the TORUM, drivers must drive to the left of.

PI

**Senior Engineer (Traffic)**

**Traffic Engineering Practice | TMR South Coast Region**