

From: N/R
To: [Damian M Scanlan](#)
Cc: N/R
Subject: GARMIN GPSMAP 8412_SN 5T4001808
Date: Friday, 3 March 2023 10:38:24 AM
Attachments: [image001.jpg](#)
[3426748981_07DEC22_0859_02.png](#)
[3426748981_07DEC22_0900_00.png](#)
[TRACK DATA_23022023_GARMIN GPSMAP 8412_SN 5T4001808.gpx](#)
[TRACK DATA_23022023_GARMIN GPSMAP 8412_SN 5T4001808.kml](#)
[20230228_142625_resized.jpg](#)
[3426748981_07DEC22_0859_00.png](#)
[3426748981_07DEC22_0859_01.png](#)
Importance: High

Good morning Damian,

I finally successfully managed to extract the past track data from the Garmin unit as requested. A copy of the data is attached in generic x.GPX and x.KML formats for your records, along with some screen shots off the actual unit in question with our current Navionics chart card data for reference.

Both uSD slots in the unit are damaged and unserviceable, however we are luckily able to extra the data via an external SD card reader after updating the system software.

The following is an observational summary of the data:

The past track data is dated in UTC time and date and in local format was recorded by the unit at the time of the incident 23rd February 2023 at 10:03 am at S 27°11.167' E 153°06.211'

The track begins at the Scarborough harbour boat ramp, shows the vessel travels out of the harbour, past the 2 sets of harbour leads and then ends abruptly as the vessel suddenly turned hard to starboard.

The track data runs for 617 seconds (10 minutes and 17 seconds) and covers a total length of 1,285 meters.

The highest speed reached by the vessel is 14.9 meters per second (53.64 KLM per hour / 29 knots) at a point 4 seconds prior to the vessel making the turn and coming to a stop.

The past track data shows the vessel accelerates from an idle pace 570 seconds (9.5 minutes) into the trip at 795m from the starting point to 608 seconds (10 minutes & 8 seconds) at 1,249m from the starting point. There are 7 track points between these points indicating an average speed of 11.943 meters per second (43 KLM per hour / 23.21 knots).

The track data shows the vessel increased in speed until the point of the incident.

We currently maintain possession of the equipment in the same condition as received (albeit the unit's firmware has been updated) and await further instruction from you.

Best regards,

N/R



Electronic Marine Solutions (EMS) P/L
A8 Gold Coast City Marina
76-84 Waterway Drive, Coomera QLD 4209

m: N/R

p: +61 7 5514 4500

www.electronicmarine.com.au

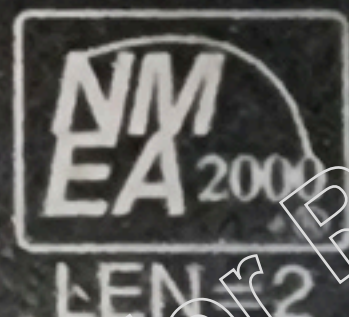
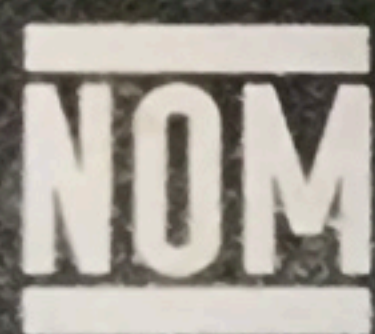
CONFIDENTIALITY NOTICE AND DISCLAIMER

This email (including any attachment to it) is confidential and may also be privileged and exempt from disclosure under applicable law. Accordingly, if you are not the intended recipient, please notify us immediately and delete this email (including any attachment to it) from your computer system. You should also not disseminate or copy the email.

Please note that any views or opinions presented in this email are solely those of the author and do not necessarily represent those of the company. Finally, the recipient should check this email and any attachments for the presence of viruses. The company accepts no liability for any damage caused by any virus transmitted by this email.

**Electronic Marine Solutions (EMS) Pty Ltd, A8 Gold Coast City Marina, 76-84 Waterway Drive, Coomera QLD
Australia, 4209, www.electronicmarine.com.au**

Released under RTI - DTMR




201-190051

CMIIT ID:2019DJ1280

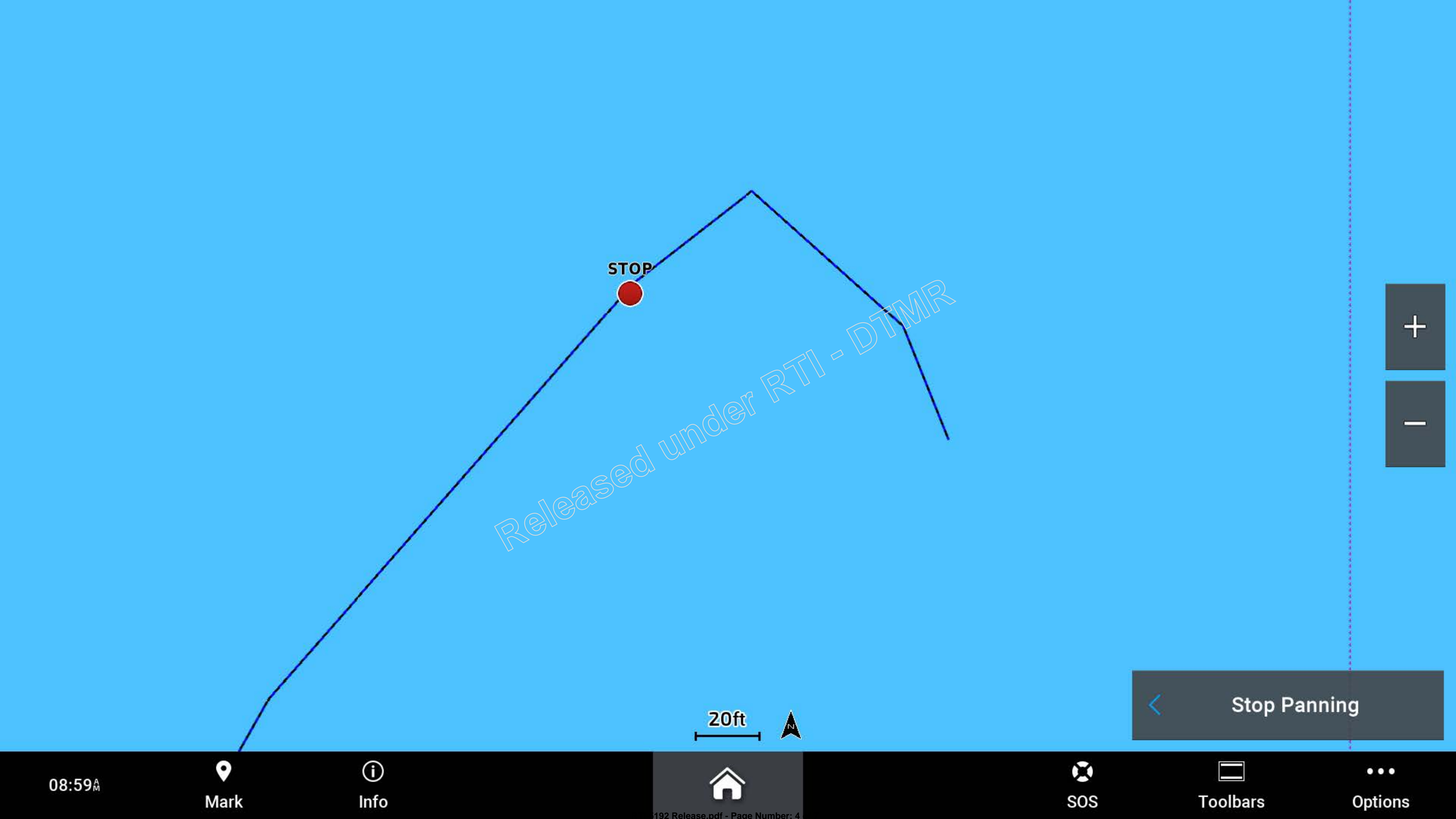
GARMIN

GPSMAP 8416XSV

s/n: 5T4001808 

Made in Taiwan

Released under RTI-DTMR



STOP

Released under RTI - DTMR

20ft

Stop Panning

08:59

Mark

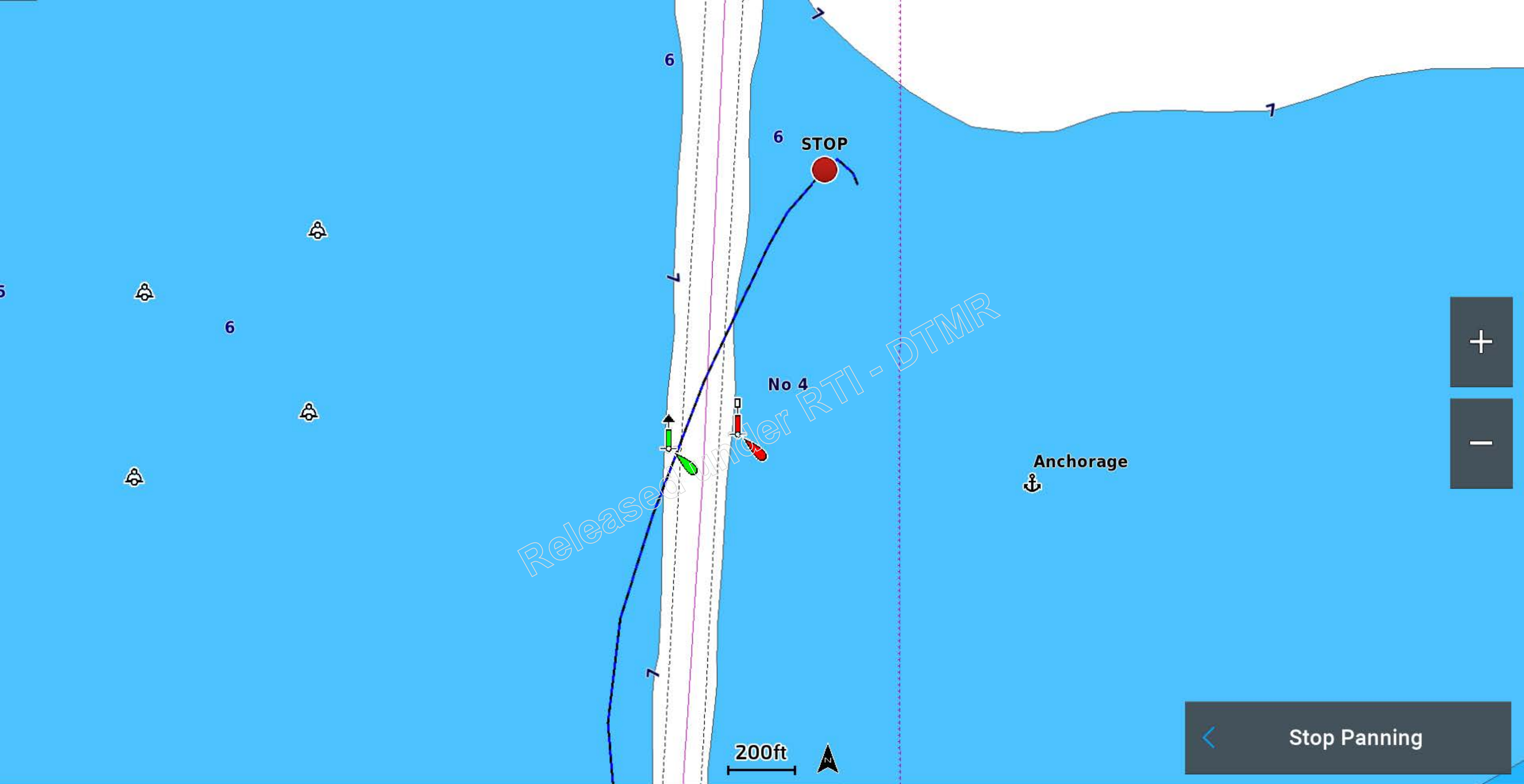
Info



SOS

Toolbars

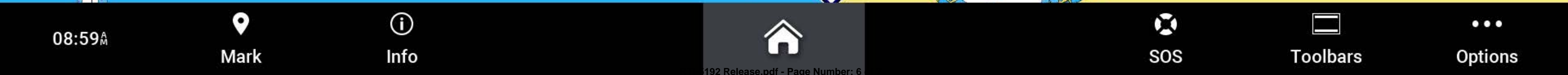
Options



Stop Panning



Stop Panning





09:00

Mark

Info



SOS

Toolbars

Options