

# Trimble Business Center Version 2025.21

## Post Installation Instructions

The following outlines the steps that need to be undertaken once Trimble Business Center is installed on your computer.

1. Open Trimble Business Center

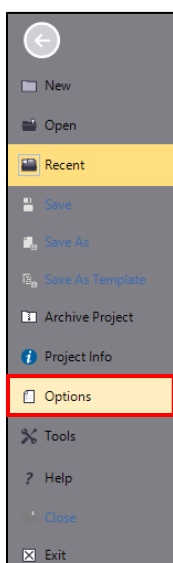


It may take a little while for the database to initialise.



2. If you are prompted for old configurations select No.

3. Select File → **Options**



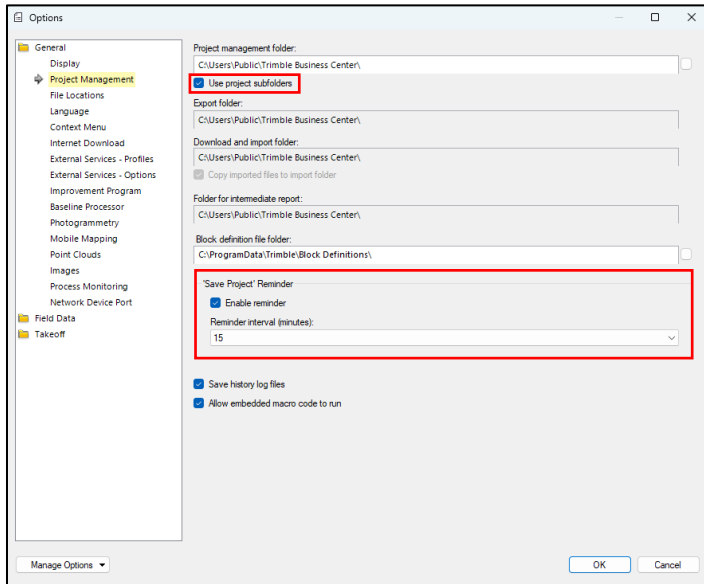
#### 4. Select **Project Management**

- You will need to update your folders to match those shown below.

You will need to **untick** the box *Use project subfolders* to edit some of the boxes. After you finish filling out the Project management folder **re-tick** *Use project subfolders*.

**Note: You will need to create these folders in the browse menu to select them if they do not already exist.**

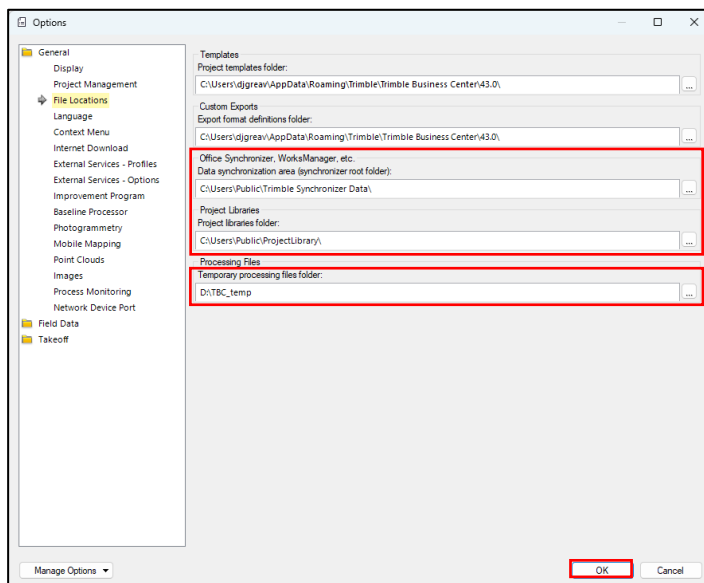
- Tick on **Enable reminder** and select a 15-minute interval



#### 5. Select **File Locations**

- Change the Office Synchronizer folder to *C:\Users\Public\Trimble Synchronizer Data*
- Change the Project Library to *C:\Users\Public\ProjectLibrary*
- Update the Temporary processing files folder to a location outside your user profile that has a large amount of space. E.g. *D:\TBC\_temp*

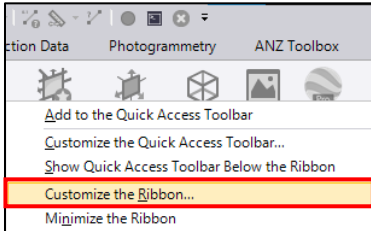
**Note: You will need to create these folders in the browse menu to select them if they do not already exist.**



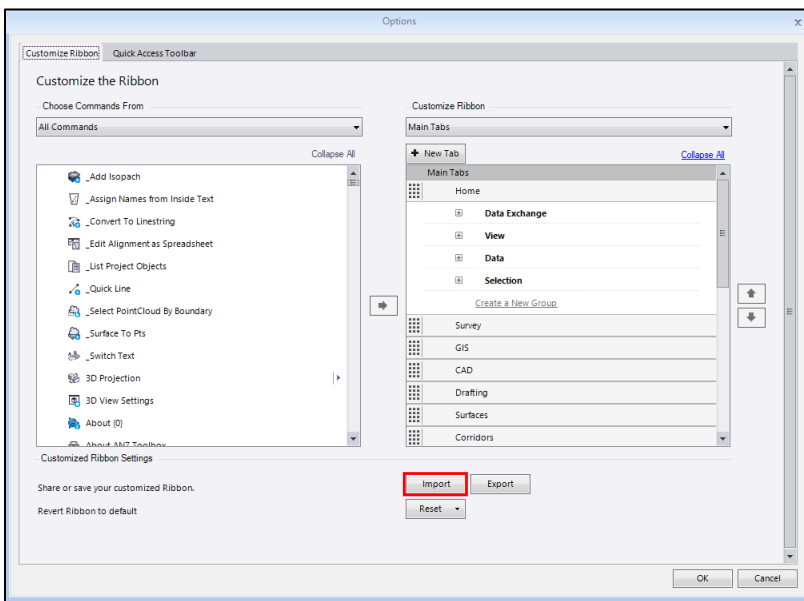
6. Press **OK** and **OK**

7. **Right Click** on the ribbon at the top of the screen

8. Select **Customize the Ribbon**

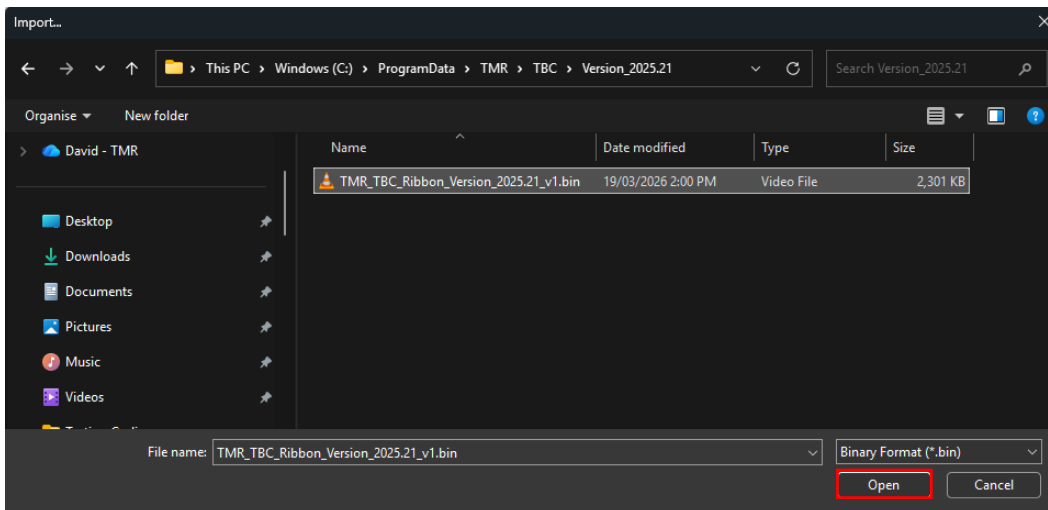


9. Press **Import**



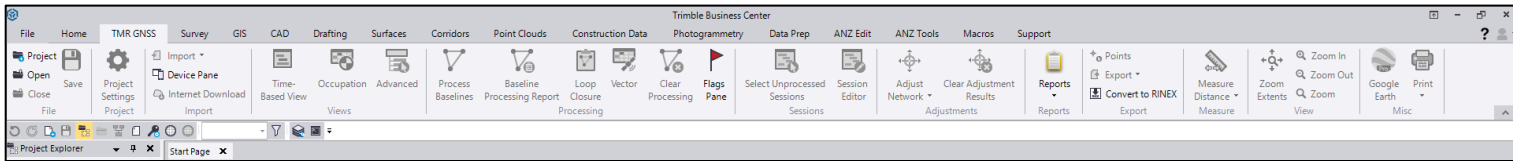
10. Browse to **C:\ProgramData\TMR\TBC\Version\_2025.21** and select [TMR\\_TBC\\_Ribbon\\_Version\\_2025.21\\_v1.bin](#)

11. Press **Open**



## 12. Press **OK**

Your ribbon should now contain the **TMR GNSS tab** and our customised **Quick Access Toolbar**.



At this stage you should restart TBC.