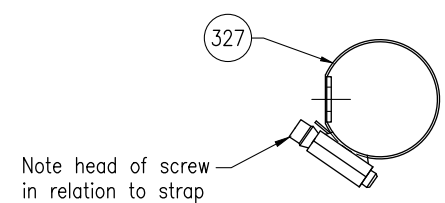
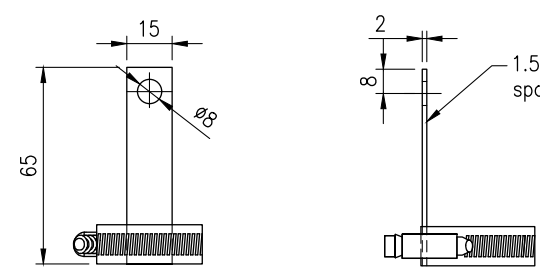


PLAN VIEW  
DRIP SHIELD



TOP VIEW



FRONT VIEW

SIDE VIEW

DETAIL 1  
CABLE CLAMP SUPPORT

- NOTES:**
1. Amend rack to suit where more terminals are required.
  2. Drip shield and cable clamp support welded to rail.
  3. Refer Standard Drawing 1670 for wiring connections.
  4. Dimensions are in millimetres unless shown otherwise.

ASSOCIATED DEPARTMENTAL DOCUMENTS:  
Standard Drawings  
Specifications

REFERENCED DOCUMENTS:  
Departmental Standard Drawings:  
1408 Traffic Signals – Traffic Signal Terminal Panel for Joint Use Poles Wiring Details  
1670 Traffic Signals – Traffic Signal Wiring Connections  
1699 Traffic Signals/Road Lighting/ITS – Parts List

Australian Standards:  
AS/NZS 3000 Electrical Installations (Wiring Rules)

Department of Transport and Main Roads			
TRAFFIC SIGNALS			
TRAFFIC SIGNAL TERMINAL PANEL FOR JOINT USE POLES		A3 Not to Scale	Standard Drawing No <b>1407</b> Date 5/2026
B	C	D	E
F	G	H	