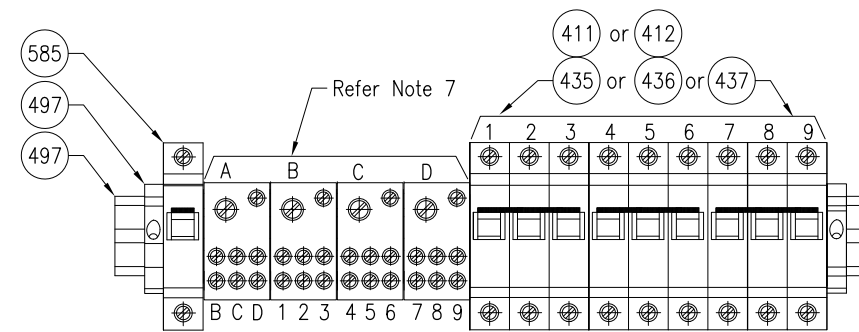
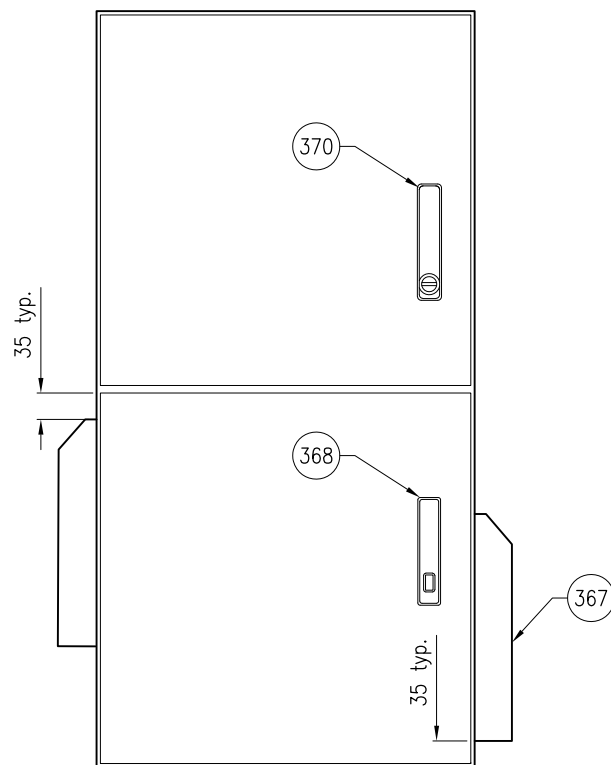


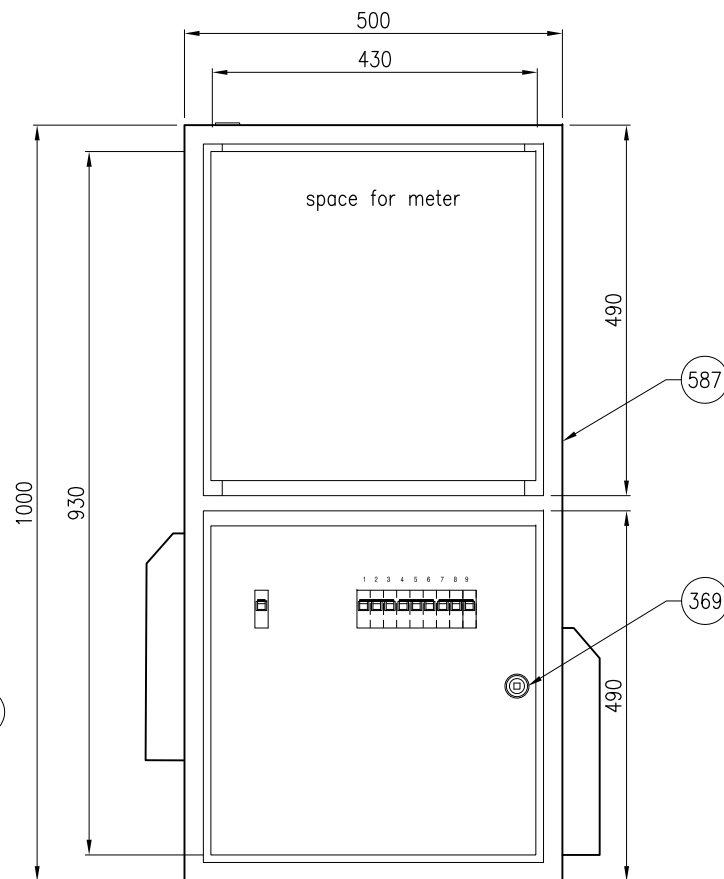
TOP VIEW



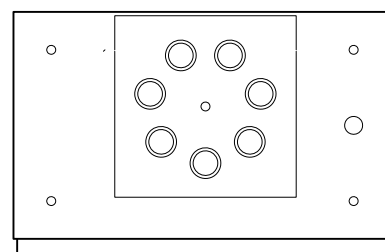
DETAIL A
CONNECTION BLOCKS AND FUSE LINK HOLDERS



FRONT VIEW DOOR LAYOUT

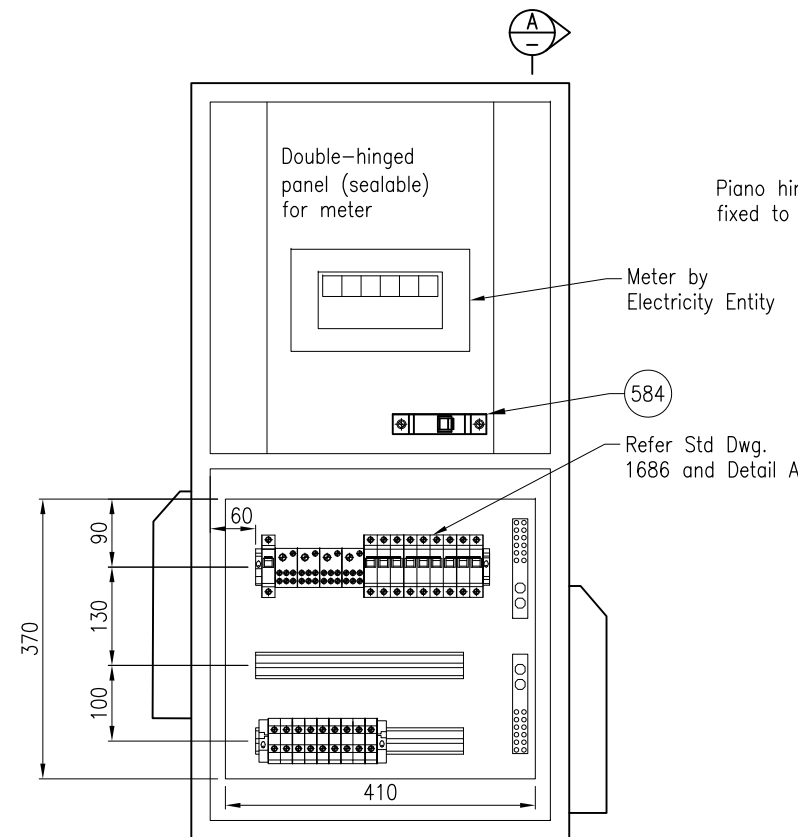


FRONT VIEW ESCUTCHEON
DOOR REMOVED

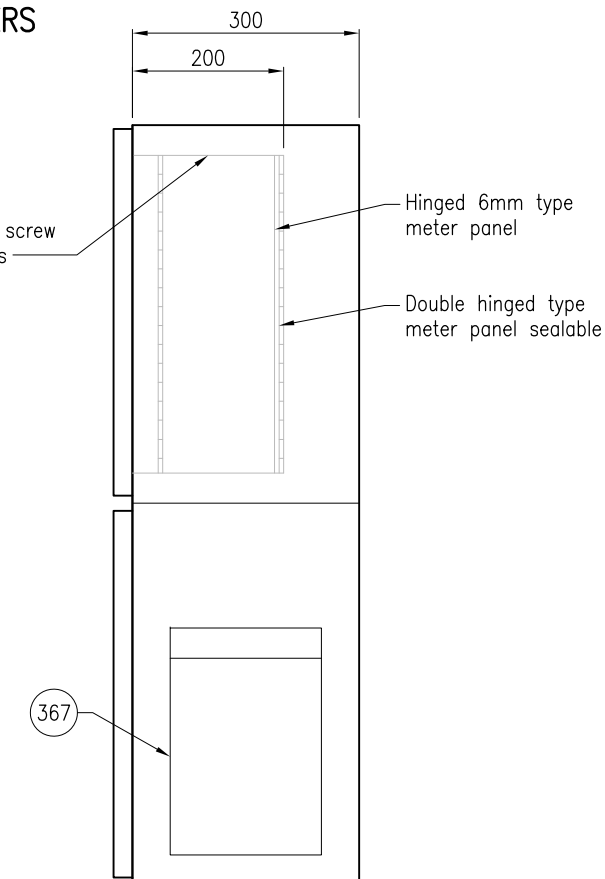


BASE VIEW

Refer Standard Drawing 1686 for details of:-
 - gland plate
 - without gland plate
 - switchboard gasket
 - gland plate gasket



FRONT VIEW
DOOR AND ESCUTCHEON
REMOVED



SECTION A

ASSOCIATED DEPARTMENTAL DOCUMENTS:
 Standard Drawings
 Specifications
 Electrical Design Manual for Roadside Devices Part 3, TRUM Vol 4

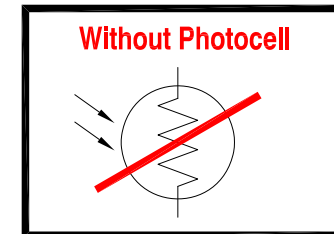
REFERENCED DOCUMENTS:
 Departmental Standard Drawings:
 1623 Road Lighting - Switchboard Typical Layout and Circuit Diagram MEN System
 1627 Road Lighting - Switchboard Top Mounted
 1628 Road Lighting - Post - Top Mounted Switchboard
 1686 Road Lighting - Switchboard Assembly Details
 1699 Traffic Signals/Road Lighting/ITS - Parts List

Departmental Specifications:
 MRTS210 Provision of Mains Power
 MRTS228 Electrical Switchboards
 MRTS256 Power Cables

Australian Standards:
 AS/NZS 3000 Electrical Installations (Wiring Rules)

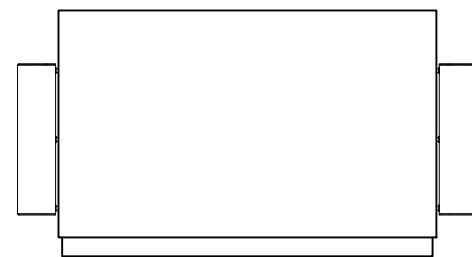
NOTES:

- For material notes, refer standard drawing 1686.
- Electricity Entity direct connect meter panel to be fitted at top.
- Meter panel to be double hinged type 6mm thickness.
- For post top installation details refer standard drawing 1627 and 1628.
- Dimensions are in millimetres unless shown otherwise.
- Maximum allowable load 64A single phase.
- Cable sizes
 A = 25mm²
 B, C & D = 16mm²
 1, 2, 3, 4, 5, 6, 7, 8 & 9 = 6mm²
~~8: -Gland shield to be installed if required-~~

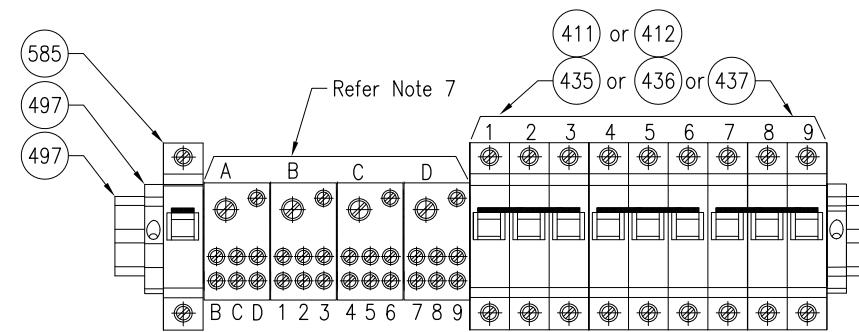


METERED SWITCHBOARD ASSEMBLY DETAILS WITHOUT PHOTOELECTRIC CELL CONTROL

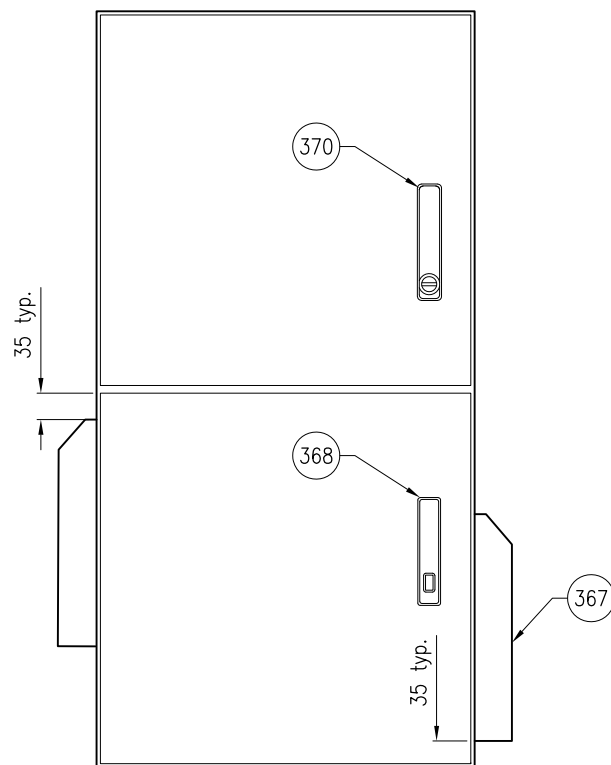
Department of Transport and Main Roads		 © The State of Queensland (Department of Transport and Main Roads) 2021 http://creativecommons.org/licenses/by/4.0/	 Standard Drawing No 1687 Date 3/2021				
ROAD LIGHTING							
METERED SWITCHBOARD ASSEMBLY DETAILS SINGLE PHASE SHEET 1 OF 2		A3 Not to Scale	<table border="1"> <tr> <td>A</td> <td>B</td> <td>C</td> <td>D</td> </tr> </table>	A	B	C	D
A	B	C	D				



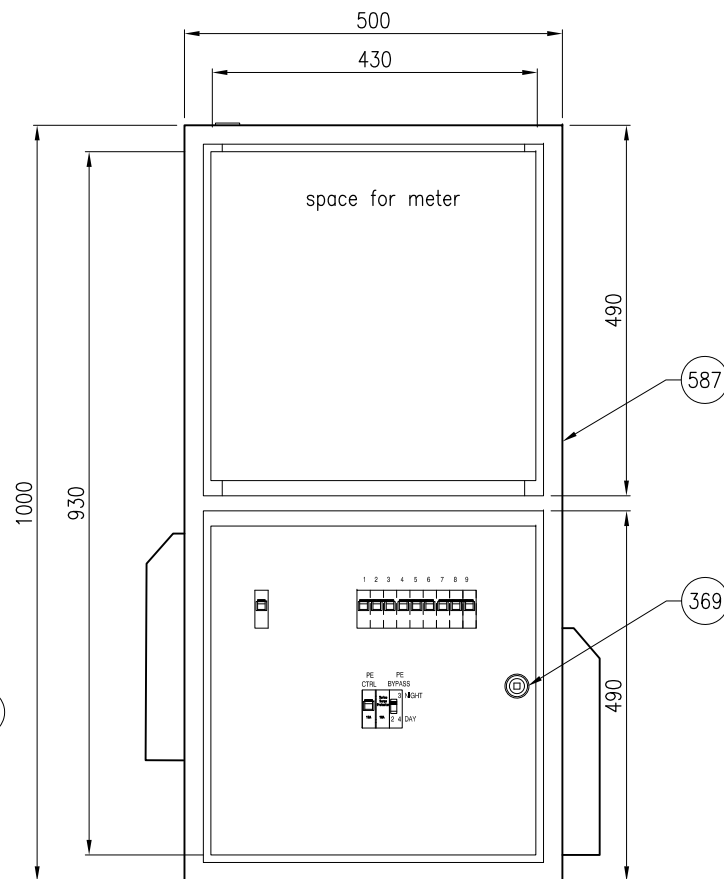
TOP VIEW



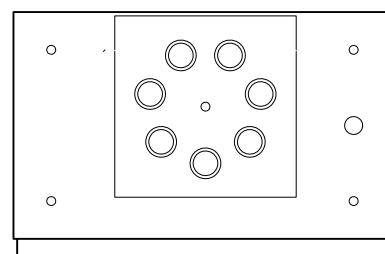
DETAIL A
CONNECTION BLOCKS AND FUSE LINK HOLDERS



FRONT VIEW DOOR LAYOUT

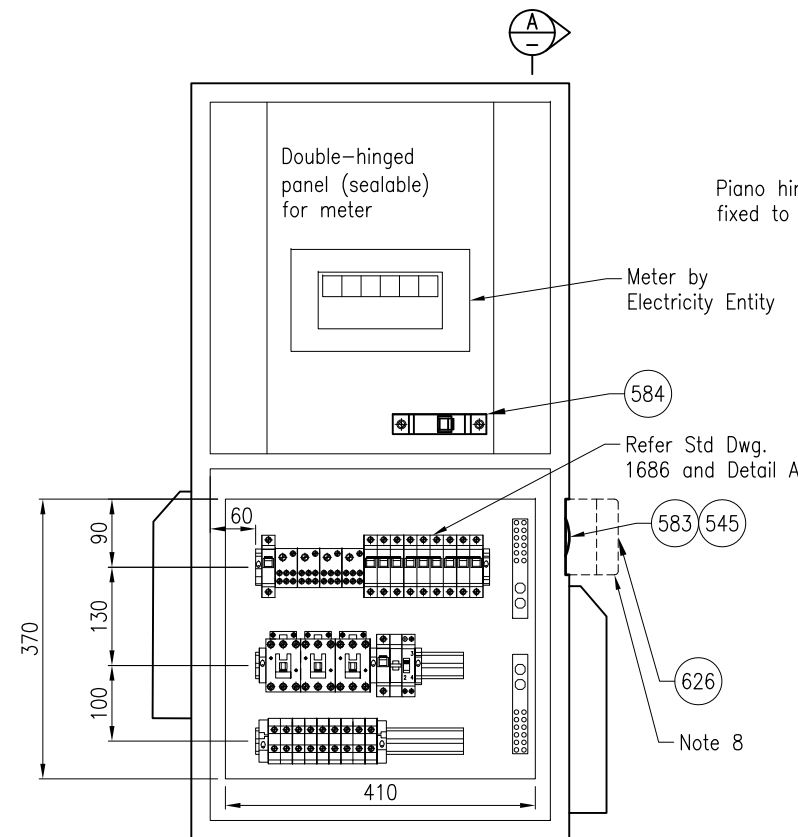


FRONT VIEW ESCUTCHEON
DOOR REMOVED

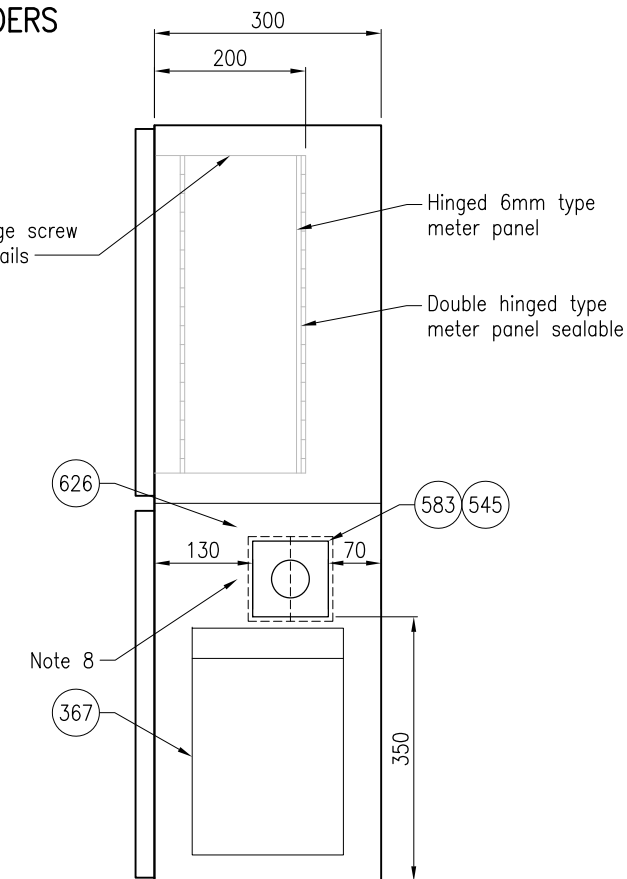


BASE VIEW

Refer Standard Drawing 1686 for details of:-
 - gland plate
 - without gland plate
 - switchboard gasket
 - gland plate gasket



FRONT VIEW
DOOR AND ESCUTCHEON
REMOVED



SECTION A

ASSOCIATED DEPARTMENTAL DOCUMENTS:

- Standard Drawings
- Specifications
- Electrical Design Manual for Roadside Devices Part 3, TRUM Vol 4

REFERENCED DOCUMENTS:

- Departmental Standard Drawings:
- 1623 Road Lighting - Switchboard Typical Layout and Circuit Diagram MEN System
 - 1627 Road Lighting - Switchboard Top Mounted
 - 1628 Road Lighting - Post - Top Mounted Switchboard
 - 1686 Road Lighting - Switchboard Assembly Details
 - 1699 Traffic Signals/Road Lighting/ITS - Parts List

Departmental Specifications:

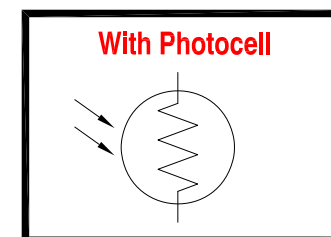
- MRTS210 Provision of Mains Power
- MRTS228 Electrical Switchboards
- MRTS256 Power Cables

Australian Standards:

- AS/NZS 3000 Electrical Installations (Wiring Rules)

NOTES:

- For material notes, refer standard drawing 1686.
- Electricity Entity direct connect meter panel to be fitted at top.
- Meter panel to be double hinged type 6mm thickness.
- For post top installation details refer standard drawing 1627 and 1628.
- Dimensions are in millimetres unless shown otherwise.
- Maximum allowable load 64A single phase.
- Cable sizes
 A = 25mm²
 B, C & D = 16mm²
 1, 2, 3, 4, 5, 6, 7, 8 & 9 = 6mm²
- Glare shield to be installed if required.



METERED SWITCHBOARD ASSEMBLY DETAILS WITH PHOTOELECTRIC CELL CONTROL

Department of Transport and Main Roads		 <small>© The State of Queensland (Department of Transport and Main Roads) 2021 http://creativecommons.org/licenses/by/4.0/</small>	
ROAD LIGHTING			
METERED SWITCHBOARD ASSEMBLY DETAILS SINGLE PHASE SHEET 2 OF 2		A3 Not to Scale	Standard Drawing No 1687 Date 3/2021
A	B	C	D