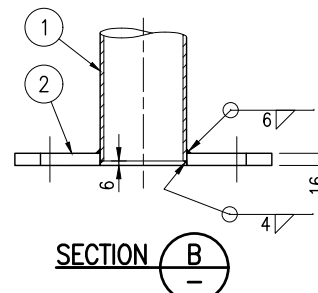
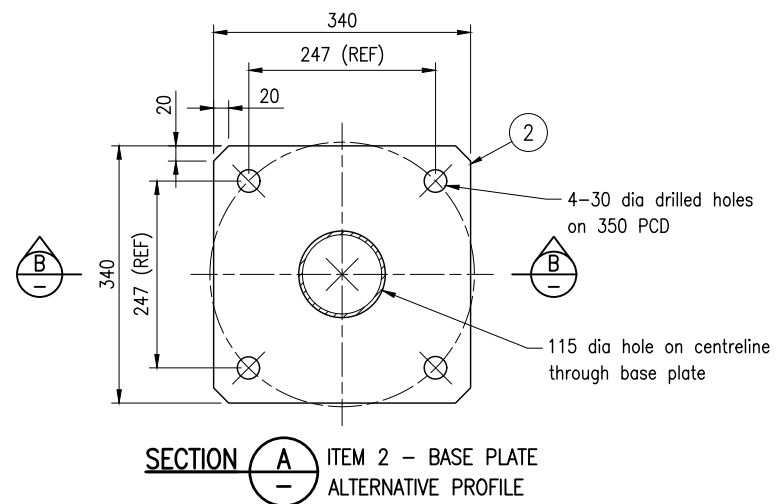
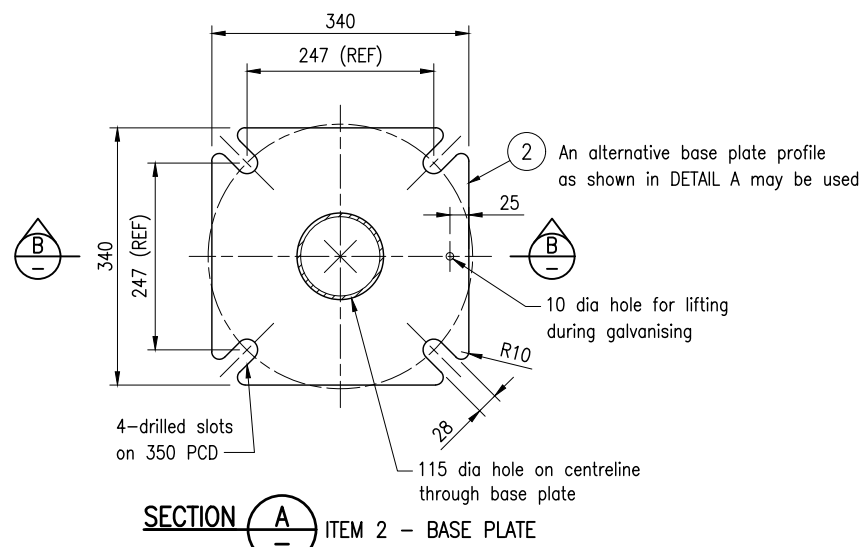


STAINLESS STEEL EARTH SCREW





**NOTES:**

- SCOPE: This Standard Drawing provides typical assembly and fabrication details of the base mounted traffic signals post accordance with MRTS97 and to AS 2339. This drawing supersedes TMR fabrication drawing 316055.
- STEELWORK shall be fabricated to the requirements of MRTS78 and in accordance with AS 4100. Steel grades are as noted in Material List. CHS to AS/NZS 1163. Steel plate to AS/NZS 3678. Flat bar to AS/NZS 3679.1. All holes shall be drilled or laser cut, ground smooth around edges. All welds shall be completed prior to hot dip galvanising. All steelwork shall be hot dip galvanised to AS/NZS 4680. Prior to galvanising all weld splatter and welding slag is to be removed.
- STAINLESS STEEL screws, nuts and washers shall be supplied in accordance with MRTS78A and conform to the requirements of ISO 3506-1. Stainless Steel grades are as noted in Material List.
- Item '3' Press on cap is required for pushbutton post only, to the requirements of AS 2339.
- WELDING symbols conform to AS 1101.3. All welding to AS/NZS 1554.1. All welds except location tack welds to be SP category. Welding consumables to be controlled hydrogen type: G493 to AS/NZS ISO 14341-B or T493 to AS/NZS ISO 17632-B.
- DIMENSIONS are in millimetres.

REFERENCED DOCUMENTS:  
 Departmental Standard Drawings:  
 1420 Traffic Signals – General Arrangements  
 Departmental Specifications:  
 MRTS78 Fabrication of Structural Steelwork  
 MRTS78A Fabrication of Structural Stainless Steelwork  
 MRTS97 Mounting Structures for Roadside Equipment

**MATERIAL LIST**

ITEM No	No OFF	ITEM DESCRIPTION	MATERIAL DESCRIPTION	LENGTH	GRADE
1	1	Post	114.3 x 4.5 CHS	Dim 'X'	C250L0
2	1	Base plate	16 thick plate	-	250
3	1	Press on cap. Refer Note 4	To suit 114.3 x 4.5 CHS	-	-
4	1	Stainless steel earth screw	CSK socket head screw M6	40	316/A4 SS
5	1	Stainless steel standard hex nut	Hex nut M6	-	316/A4 SS
6	2	Stainless steel flat round washer	To suit M6 screw	-	316/A4 SS
7	2	Stainless steel lock nut hex	Lock nut hex M6	-	316/A4 SS
8	1	Thickening plate	25 x 5 thick flat bar	40	300

Department of Transport and Main Roads		 © The State of Queensland (Department of Transport and Main Roads) 2021 <a href="https://creativecommons.org/licenses/by/4.0/">https://creativecommons.org/licenses/by/4.0/</a>	
TRAFFIC SIGNALS			
BASE MOUNTED TRAFFIC SIGNALS POST – ASSEMBLY AND DETAILS		A3 Not to Scale	Standard Drawing No <b>1721</b> Date 11/2021
A	B	C	