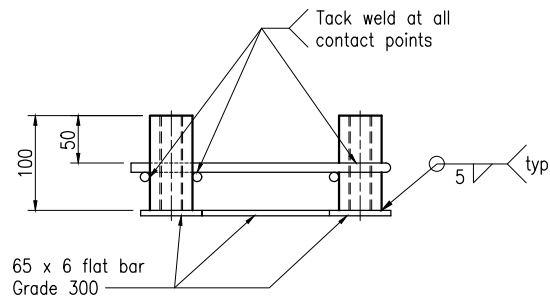
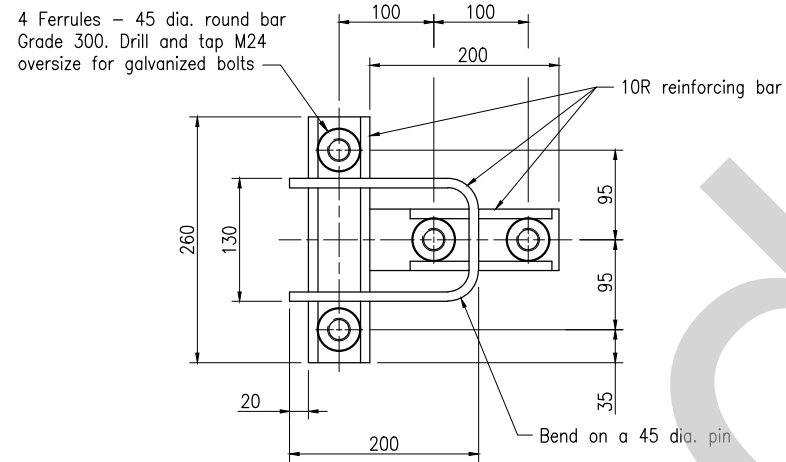


PLAN

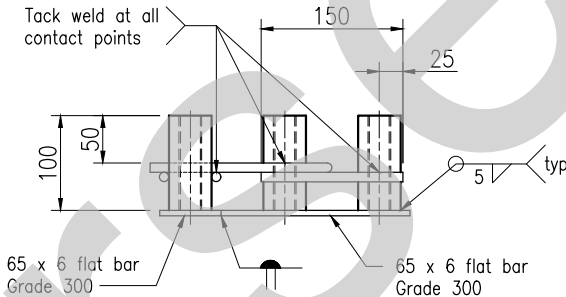


ELEVATION

CAST-IN ANCHOR ASSEMBLY FOR THRIE BEAM (FC02)

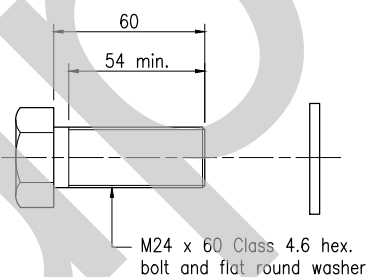


PLAN



ELEVATION

CAST-IN ANCHOR ASSEMBLY FOR W BEAM (FC03)



BOLT DETAIL FOR STEEL BEAM TERMINAL CONNECTOR TO CAST-IN ANCHOR ASSEMBLY

FC02 - 5 Off
FC03 - 4 Off

NOTES:

1. STEELWORK to be fabricated to the requirements of MRTS78. Flat bar and round bar to AS/NZS 3679.1. Reinforcing steel to be Grade R250N in accordance with AS/NZS 4671. Bolts Class 4.6 to AS 1111.1 and washers for Class 4.6 bolts to AS 1237. All bolts to be hot dip galvanized to AS 1214. All other steelwork to be hot dip galvanized to AS/NZS 4680 unless shown otherwise. Prior to galvanizing all weld splatter and welding slag is to be removed.
2. WELDING symbols conform to AS 1101.3. All welding to AS/NZS 1554.1. All welds, except location tack welds, to be SP category. Welding consumables to be controlled hydrogen type: E49XX or W50X unless shown otherwise.
3. DIMENSIONS are in millimetres unless shown otherwise.

ASSOCIATED DOCUMENTS:

- Main Roads Standard Drawings Roads manual
- Main Roads Specifications and Technical Standards Manual

REFERENCED DOCUMENTS:

- Standard Drawings:
- 1470 Single Slope Concrete Barrier - Transition between Median Barrier and Thrie Beam Guardrail
 - 1475 Steel Beam Guardrail - Installation on Bridge and Barrier Approaches
 - 1480 Steel Beam Guardrail - Fabrication Details for W Beam Rails and Rail Components
 - 1481 Steel Beam Guardrail - Fabrication Details for Thrie Beam Rails and Rail Components
 - 1484 Steel Beam Guardrail - Batter Slope Terminals (1 on 1 and Steeper)
 - 1486 Single Slope Concrete Barrier - Concrete Terminal with Thrie Beam Guardrail Connection General Details

Standard Specifications:

- MRTS14A Road Furniture (Steelwork)
- MRTS78 Fabrication of Structural Steelwork

Australian Standards:

- AS 1101.3 Graphical Symbols for
- AS 1111.1 ISO Metric Hexagon Bolt and Flat Round Washer Product Grade C - B
- AS 1214 Hot-dip Galvanized Coatings (ISO Metric Course Thicknesses)
- AS 1237 Plain Washers for Metric Bolts - General Purposes
- AS/NZS 1554.1 Structural Steel Welding
- AS/NZS 3679.1 Structural Steel - Hot Dip Galvanized
- AS/NZS 4671 Steel Reinforcing Materials
- AS/NZS 4680 Hot-dip Galvanized (Zinc) Ferrous Articles

This Standard Drawing is withdrawn. Public domain steel barrier systems are not to be used as Normal Design Domain (NDD) for new projects or installations within the TMR network. However, this drawing can be used for the purposes of maintaining existing installations when repairs and replacements can be reasonably and readily undertaken or if justified and certified by an RPEQ as an Extended Design Domain (EDD) for new installations, where appropriate proprietary products are not suitable/feasible.

Updated Guidance stamp 3/2025

This version contains details for cast-in anchor assembly for W Beam. This was removed in Revision E of this standard drawing.
Revision E is currently published on web page.

CONCRETE BARRIER/BRIDGE PARAPET			
		Department of Transport and Main Roads	
CAST-IN ANCHOR ASSEMBLY FOR W AND THRIE BEAM GUARDRAIL CONNECTION	A3	Standard Drawing No	
	Not to Scale	1467	
		Date 9/10	
	A	B	C
			D