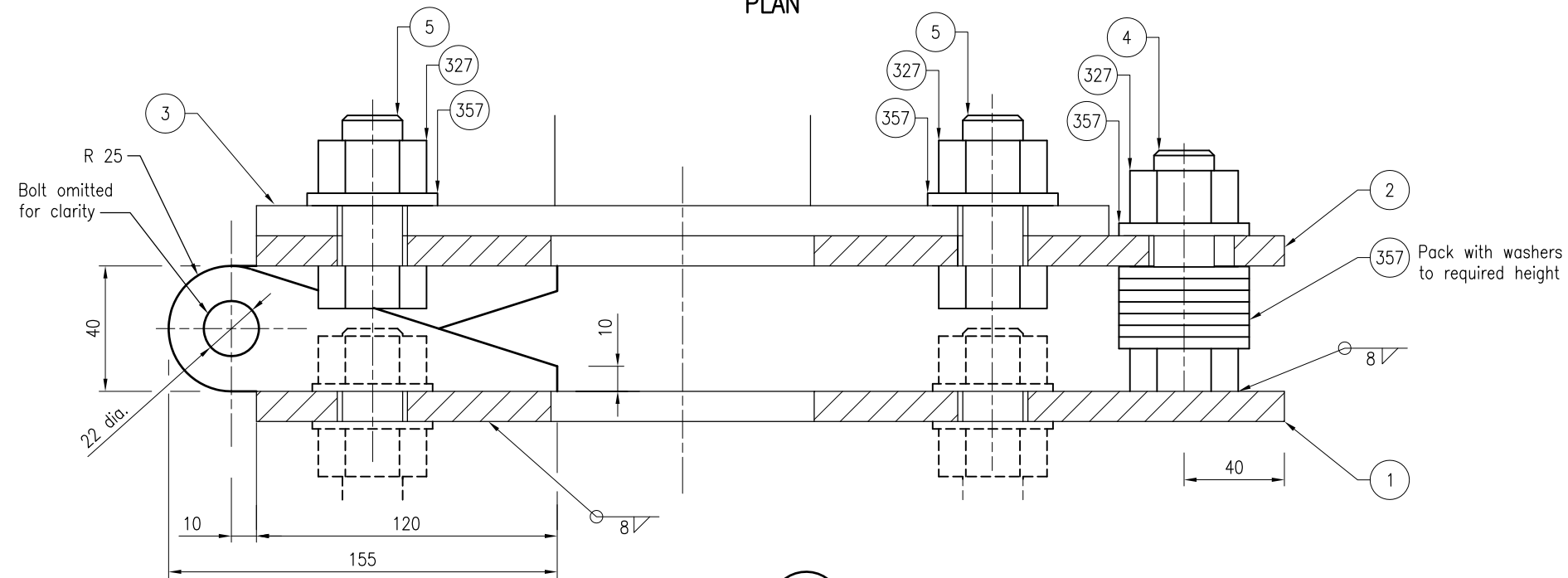


PLAN



SECTION A

NOTES:

1. Steel plate to comply with AS/NZS 332778.
2. Welding to comply with AS/NZS 1554.1.
3. Items to be hot dipped galvanized after fabrication to AS/NZS 4680.
4. Hardware to be galvanized to AS/NZS 1214.
5. Dimensions are in millimetres unless shown otherwise.

ASSOCIATED DEPARTMENTAL DOCUMENTS:

- Standard Drawings
- Specifications

REFERENCED DOCUMENTS:

- Australian Standards:
- AS/NZS 1554.1 Structural steel welding – Welding of steel structures
 - AS/NZS 3678 Structural Steel – Hot-rolled plates, floor plates and slabs
 - AS/NZS 4680 Hot-dip galvanized (zinc) coatings on fabricated ferrous articles

ITEM	MATERIAL	QTY.	DESCRIPTION
1	12 PL 410 x 340	1	4 HOLES 28 dia. AS SHOWN
2	12 PL 410 x 340	1	4 HOLES 28 dia., 2 SLOTS AS SHOWN
3	FL 12 x 50	4	155 LONG WITH 22 dia. HOLE
4	M24 x 80 MS BOLT	2	WELDED TO ITEM 1.
5	M24 x 3270 GALV HEX BOLT	4	
327	M24 GALV NUT	6	
357	M24 GALV FLAT WASHER	20	
8	M20 x 3270 GALV HEX BOLT	2	FOR HINGE
9	M20 GALV HEX NUT	2	
10	M20 GALV FLAT WASHER	6	

Department of Transport and Main Roads		 <small>© The State of Queensland (Department of Transport and Main Roads) 2017 http://creativecommons.org/licenses/by/3.0/au</small>	
TRAFFIC SIGNALS			
HINGED BASE PLATE FOR TRAFFIC SIGNAL POST FABRICATION DETAILS		A3 Not to Scale	Date 10/17
A	B	C	