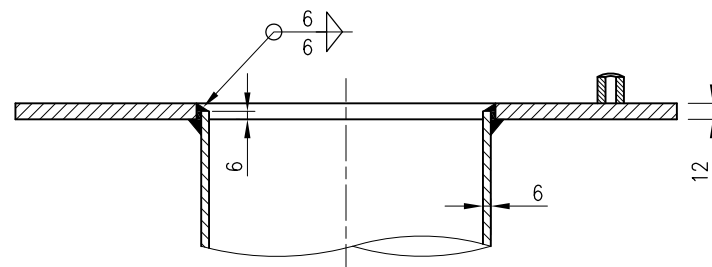
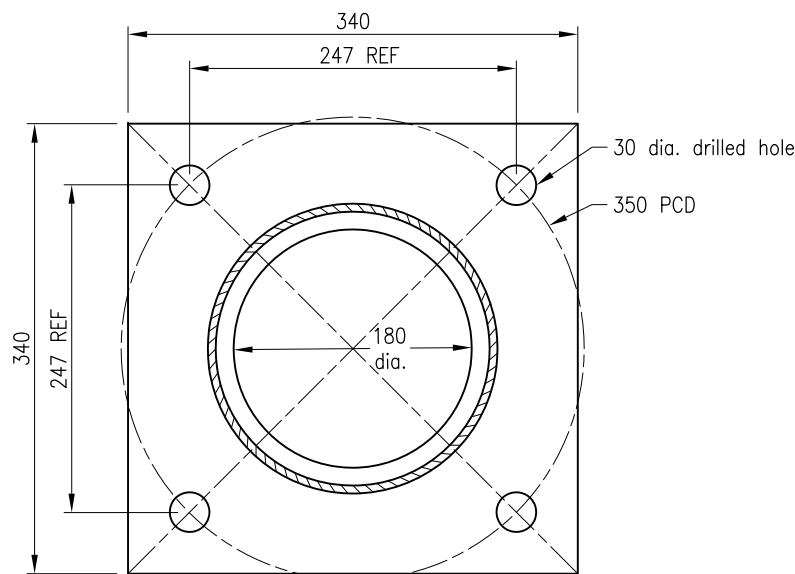


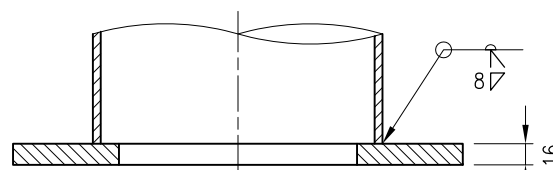
MOUNTING PLATE FOR SWITCHBOARD (TOP VIEW) 2



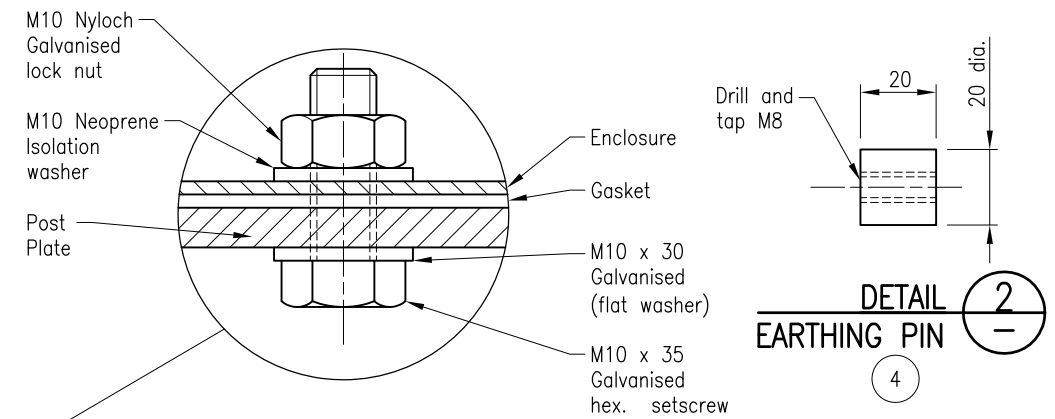
SECTION C



SECTION A SWITCHBOARD POST BASE PLATE 1



SECTION B



DETAIL 2 EARTHING PIN 4

Item No	No. off	Item Description	Material Description	Grade
1	1	Switchboard Post Base Plate	Refer details in Section A	250
2	1	Mounting plate for Switchboard	12mm Plate	250
3	1	Switchboard Post	219mm dia. x 6.4mm CHS	350L0
4	1	Earthing Pin (Refer Detail 2)	20mm dia. Round Bar	MS

**NOTES:**

1. DESIGN CRITERIA
  - (i) Steel work designed in accordance with AS 4100.
2. STEELWORK
  - (i) CHS tube to be grade 350L0 to AS/NZS 1163.
  - (ii) Plate to be grade 250 to AS/NZS 3678.
  - (iii) Welding symbols to AS 1101.3.
  - (iv) All welding to AS/NZS 1554.1.
  - (v) All structural welding consumables to be controlled hydrogen type G493 to AS/NZS ISO 14341-B or T493 TO AS/NZS ISO 17632-B, unless shown otherwise.
  - (vi) Holes cut through plates to be ground smooth around edges.
  - (vii) All steelwork to be cleaned and welding slag removed prior to hot dip galvanising to AS/NZS 4680.
  - (viii) Steelwork to be fabricated to the requirements of MRTS78.

3. For installation of switchboard post refer drawing Standard Drawing 1627.

4. DIMENSIONS are in millimetres unless shown otherwise.

ASSOCIATED DEPARTMENTAL DOCUMENTS:

- Specifications
- Standard Drawings

REFERENCED DOCUMENTS:

- Departmental Standard Drawings: 1627 Road Lighting – Switchboard Top Mounted

Departmental Specifications:

- MRTS78 Fabrication of Structural Steelwork

Australian Standards:

- AS/NZS 1101.3 Graphical symbols for general engineering – Welding and non-destructive examination
- AS/NZS 1163 Cold formed structural steel hollow sections
- AS/NZS 1554.1 Structural steel welding – Welding of steel structures
- AS/NZS 3678 Structural steel – Hot rolled plates, floor plates and slabs
- AS 4100 Steel structures
- AS/NZS 4680 Hot dip galvanized (zinc) coatings on fabricated ferrous articles

DETAIL 1 SWITCHBOARD POST TOP MOUNT 257

The purpose of this drawing is to provide typical standard details. The fitness for purpose of this drawing for a specific project shall be determined and certified by a RPEQ engineer. Project specific details may be required to be included in the scheme drawings.

Department of Transport and Main Roads			
ROAD LIGHTING			
POST – TOP MOUNTED SWITCHBOARD		A3 Not to Scale	Standard Drawing No <b>1628</b> Date 7/15
A	B	C	D