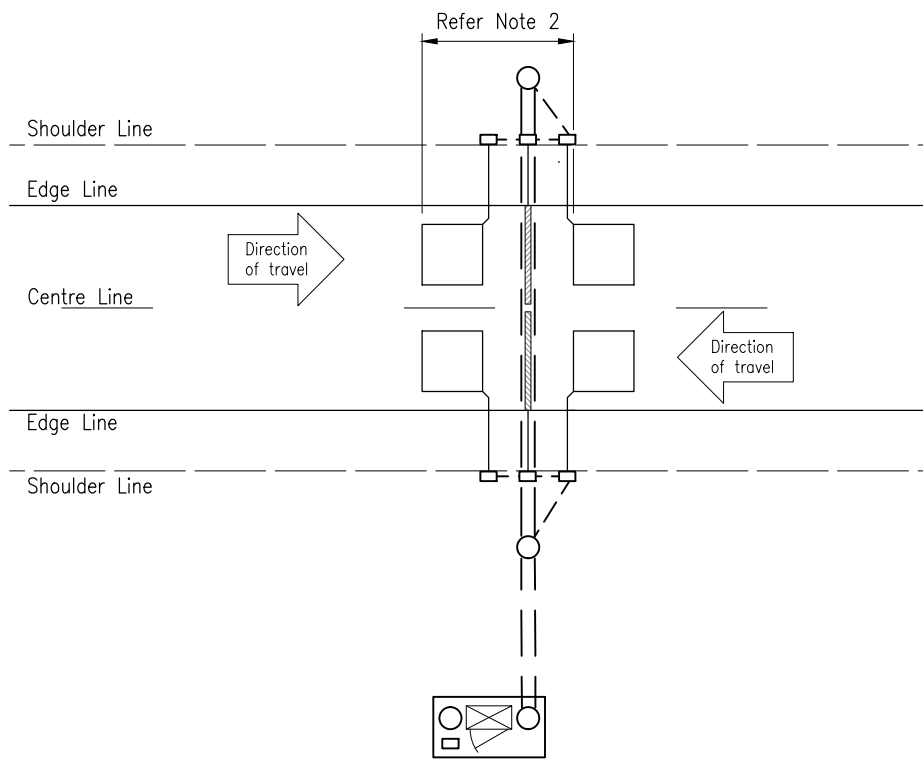
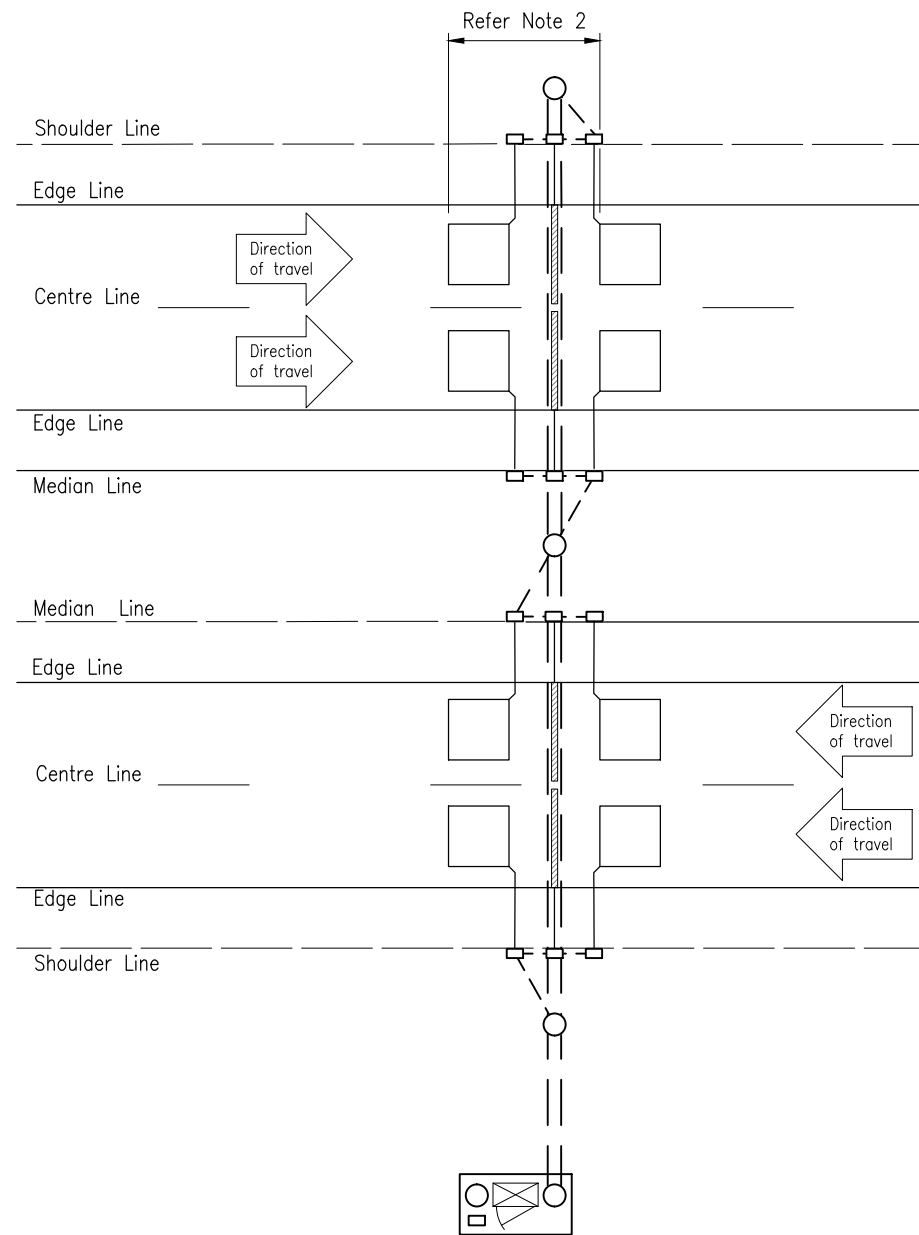


LEGEND

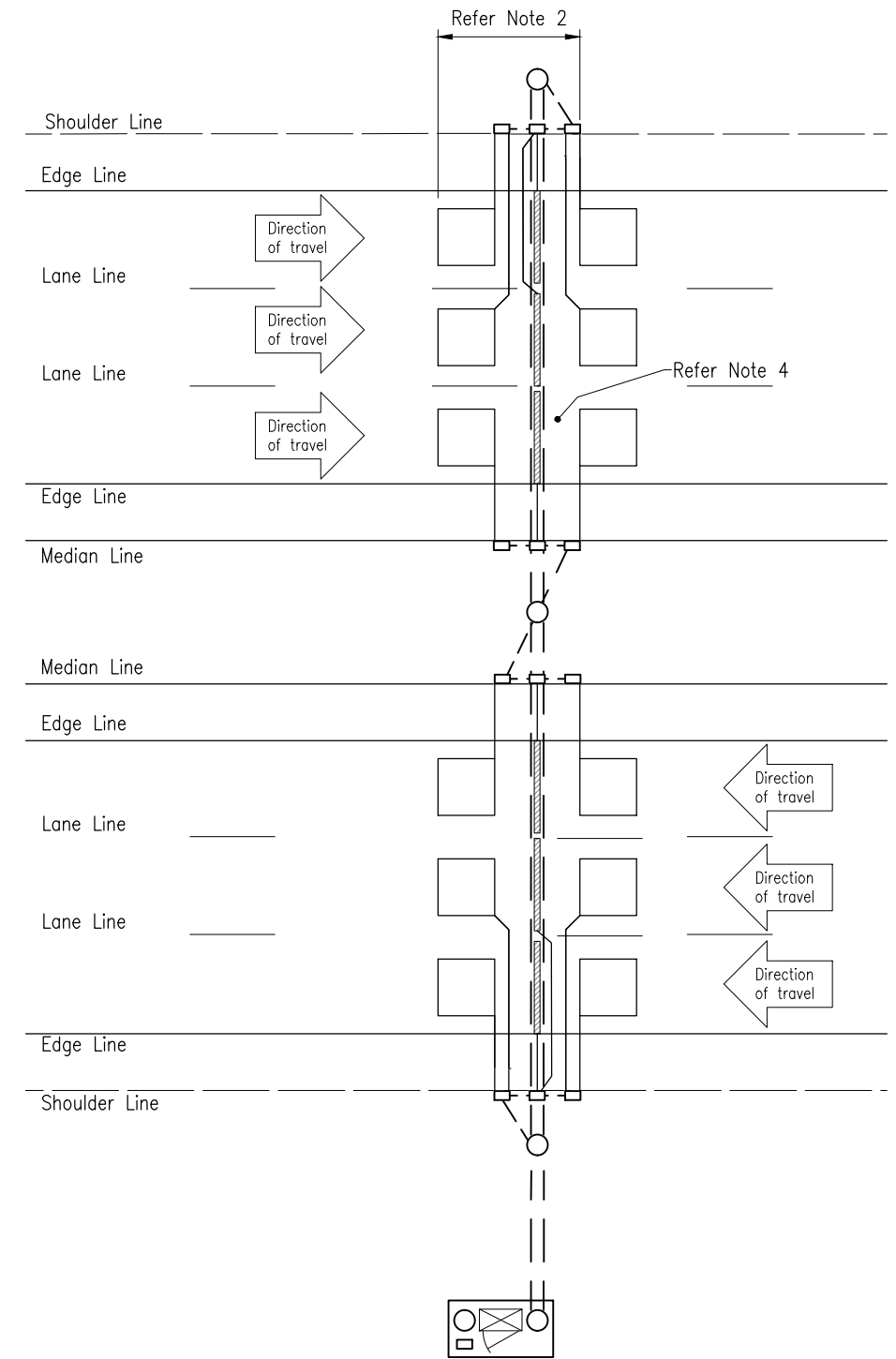
SYMBOL	DESCRIPTION
	Field Cabinet
	Type 3 Pit
	Circular Pit
	1x100 dia conduit (White)
	2x100 dia Conduit (White)
	Cabinet concrete pad Refer standard drawings 1924 and 1925
	2m x 2m Loop
	Piezo Sensor



LOOP-PIEZO-LOOP CONFIGURATION
SINGLE CARRIAGEWAY BI-DIRECTIONAL



LOOP-PIEZO-LOOP CONFIGURATION
DUAL CARRIAGEWAY
2-LANE

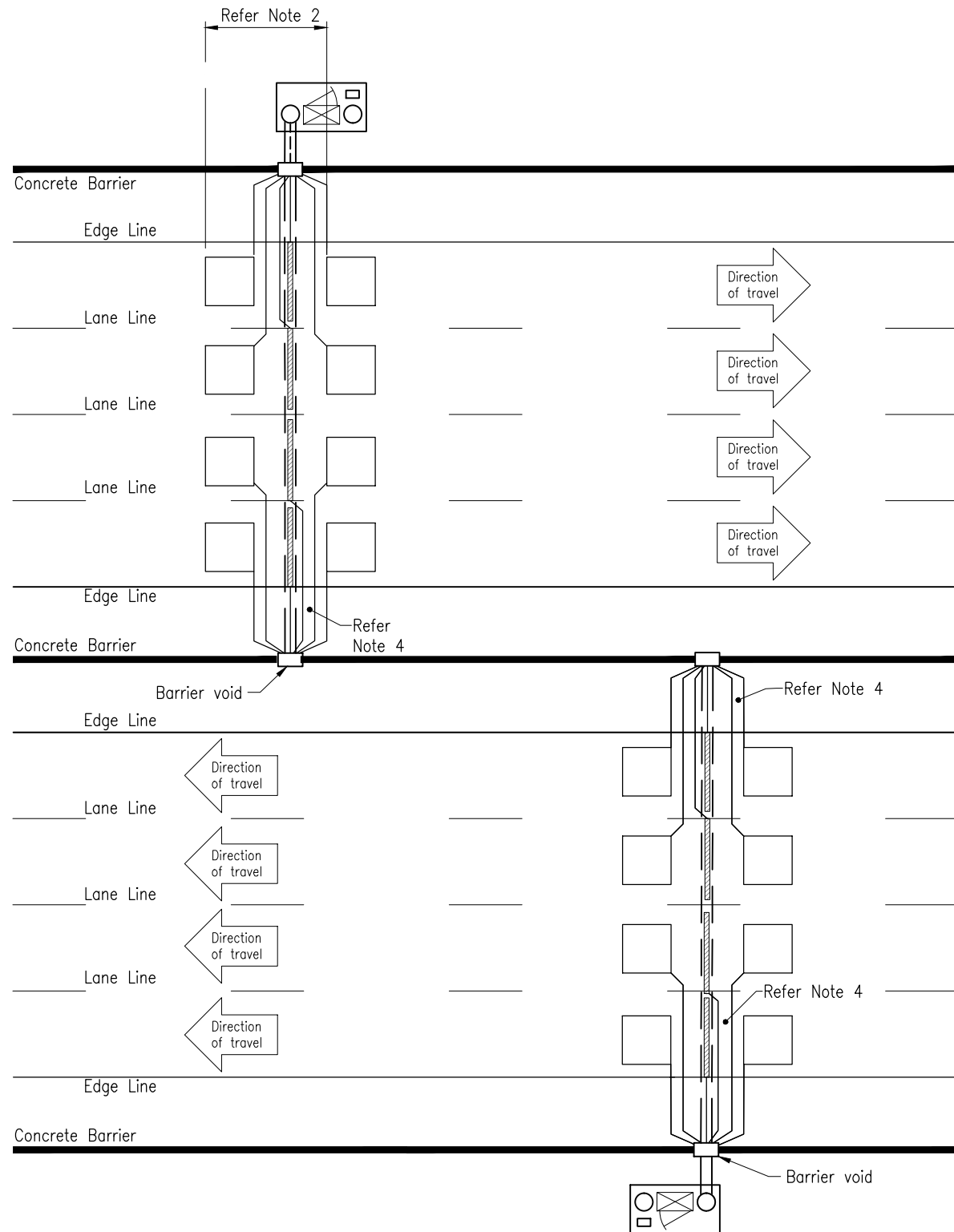


LOOP-PIEZO-LOOP CONFIGURATION
DUAL CARRIAGEWAY
3-LANE

REFER TO SHEET 2 FOR CONFIGURATION AND
PLACEMENT NOTES

INSTALLATION OF CONDUITS
AND PITS IS THE
RESPONSIBILITY OF THE
LICENSED ELECTRICAL
CONTRACTOR

Department of Transport and Main Roads			
ITS		<small>© The State of Queensland (Department of Transport and Main Roads) 2023 https://creativecommons.org/licenses/by/4.0/</small>	
AXLE-BASED VEHICLE CLASSIFIER SENSOR CONFIGURATION LOOP-PIEZO-LOOP SHEET 1 OF 2		A3 Not to Scale	Standard Drawing No 1917 Date 3/2023
A	B		



LOOP-PIEZO-LOOP CONFIGURATION
DUAL CARRIAGEWAY
4-LANE

LEGEND

SYMBOL	DESCRIPTION
	Field Cabinet
	Type 3 Pit
	Circular Pit
	1x100 dia conduit (White)
	2x100 dia Conduit (White)
	Cabinet concrete pad Refer standard drawings 1924 and 1925
	2m x 2m Loop
	Piezo Sensor

NOTES:

- Only 1 cabinet may be used if the longest sensor cable length is $\leq 100m$, otherwise 2 cabinets are required.
- Five (5) metres spacing where posted speed limit ≤ 80 kph;
Seven (7) metres spacing where posted speed limit > 80 kph.
- Refer to SD1916 for sensor installation details and loop characteristics.
- Where possible, there shall be a minimum 500mm gap between slots cut for loops, piezo sensors and tails.
- Loop detector and feeder cables are to be joined in pits. Joints are to be separately insulated and sealed to prevent ingress of water.
- All loop feeder cables routed via any shared path (conduit or slot) must be terminated to the same detector card to avoid inter-card crosstalk.
- Dimensions are in metres (m) unless noted otherwise.

ASSOCIATED DEPARTMENTAL DOCUMENTS:

Standard Drawings
Specifications

REFERENCED DOCUMENTS:

Departmental Standard Drawings:

- 1916 ITS - Axle-based Vehicle Classifier Sensor Installation Details
- 1922 ITS - Vehicle Classifier Cabinet Details - Solar Powered
- 1923 ITS - Vehicle Classifier Cabinet Details - Mains Powered
- 1924 ITS - Vehicle Classifier Cabinet Installation - Solar Powered
- 1925 ITS - Vehicle Classifier Cabinet Installation - Mains Powered

Departmental Specifications:

- MRTS200 General Requirements for Intelligent Transport Systems (ITS) Infrastructure
- MRTS201 General Equipment Requirements
- MRTS207 Traffic Survey Foundation Equipment
- MRTS251 Traffic Counter / Classifier

INSTALLATION OF CONDUITS AND PITS IS THE RESPONSIBILITY OF THE LICENSED ELECTRICAL CONTRACTOR

Department of Transport and Main Roads			
ITS		© The State of Queensland (Department of Transport and Main Roads) 2023 https://creativecommons.org/licenses/by/4.0/	
AXLE-BASED VEHICLE CLASSIFIER SENSOR CONFIGURATION LOOP-PIEZO-LOOP SHEET 2 OF 2		A3 Not to Scale	Standard Drawing No 1917 Date 3/2023
A	B		