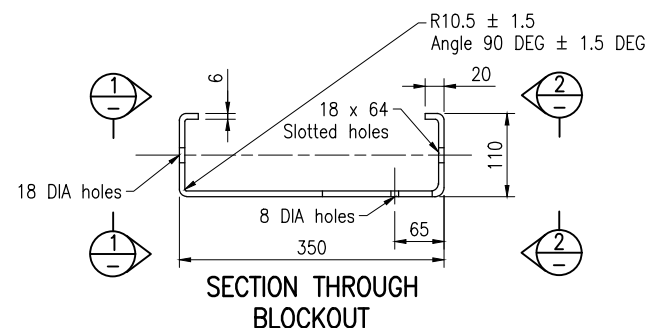
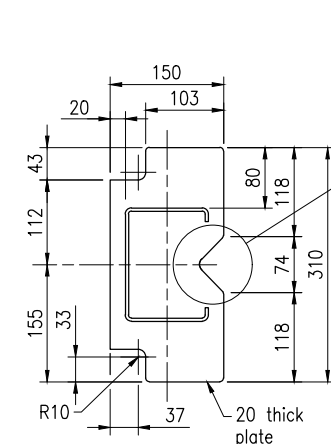


NOTCHED BLOCKOUT
PIECE (P006/P007)

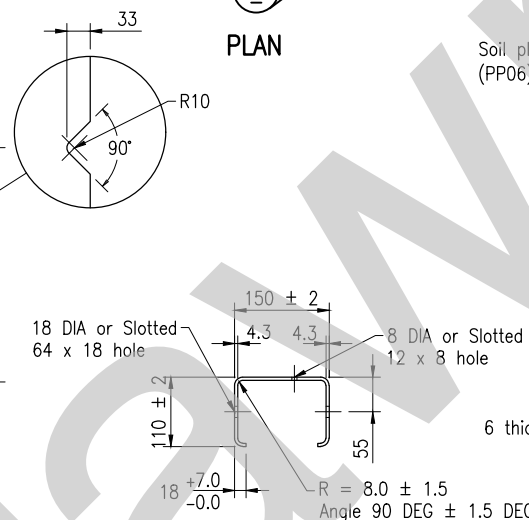


P006
USE ON
VERGE NOTCH
RHS

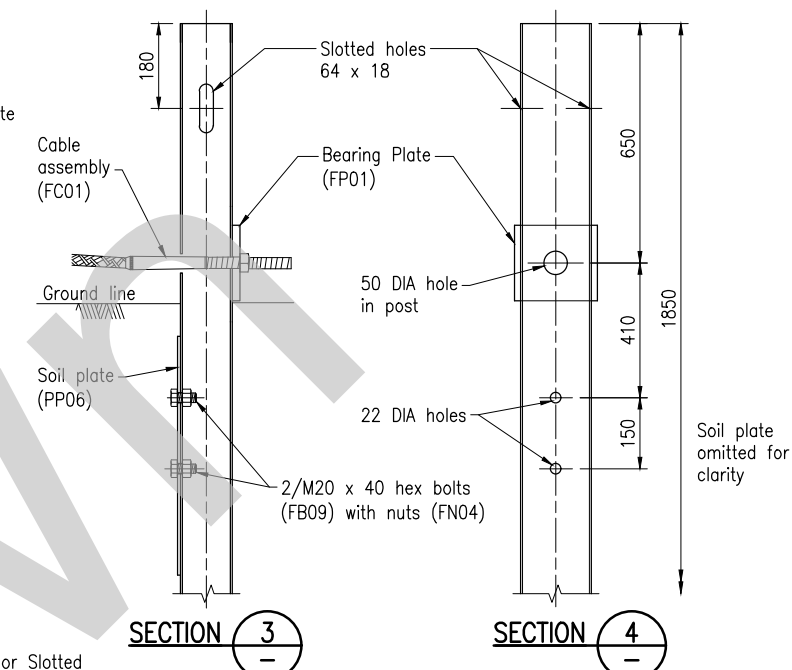
P007
USE ON MEDIAN
NOTCH LHS



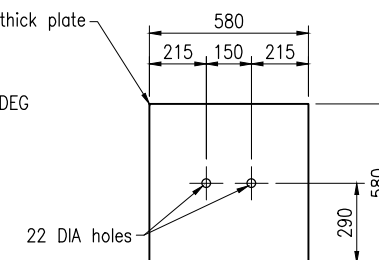
SLIP BASE PLATE



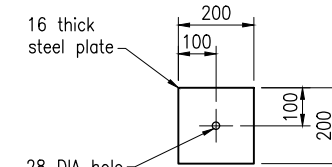
SECTION THROUGH
POST AND BLOCKOUT



ONE WAY TRAFFIC
DEPARTURE END STEEL POST (P015)



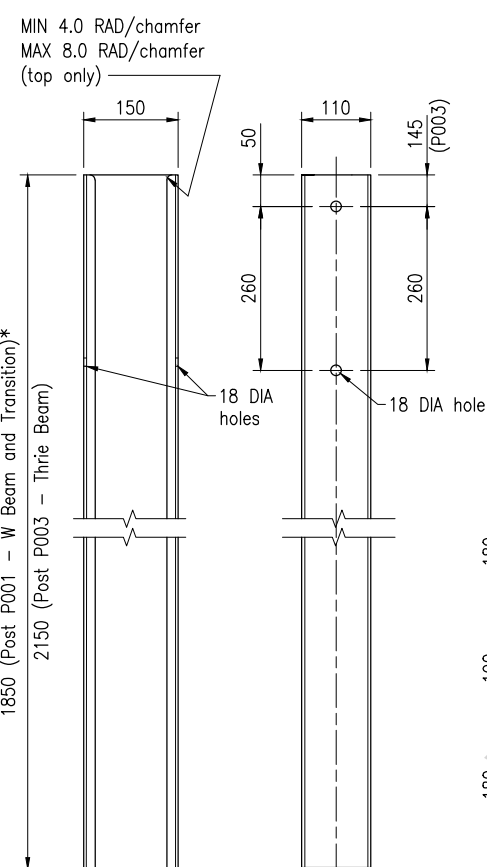
SOIL PLATE (PP06)



BEARING PLATE (FP01)

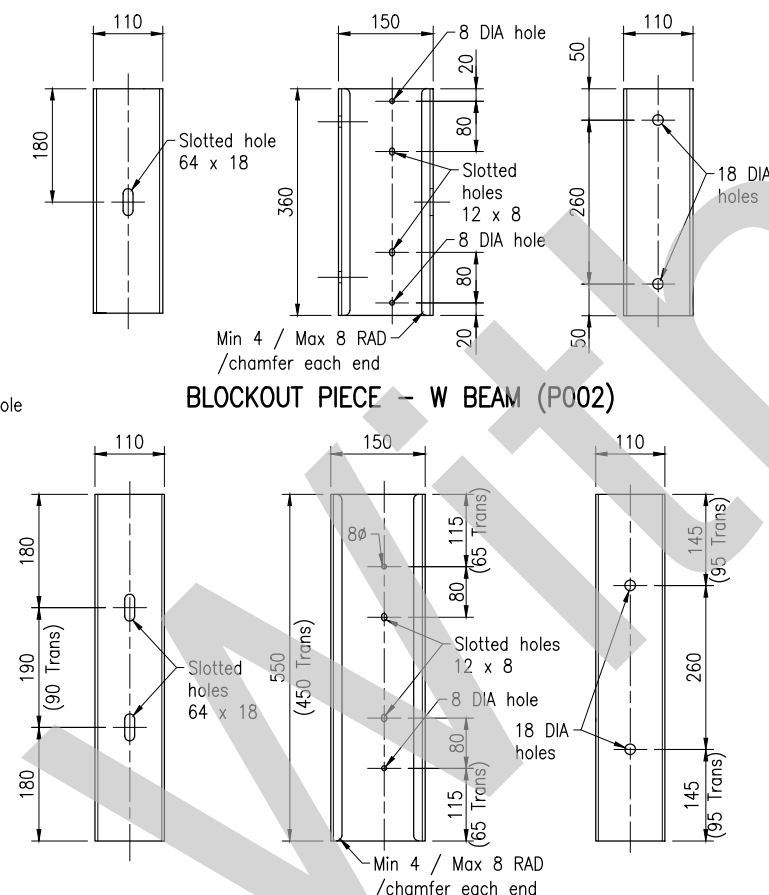
* OR LONGER AS NECESSARY

MODIFIED THRIE BEAM NOTCHED BLOCKOUT



POST - W BEAM (P001)
- THRIE (P003)

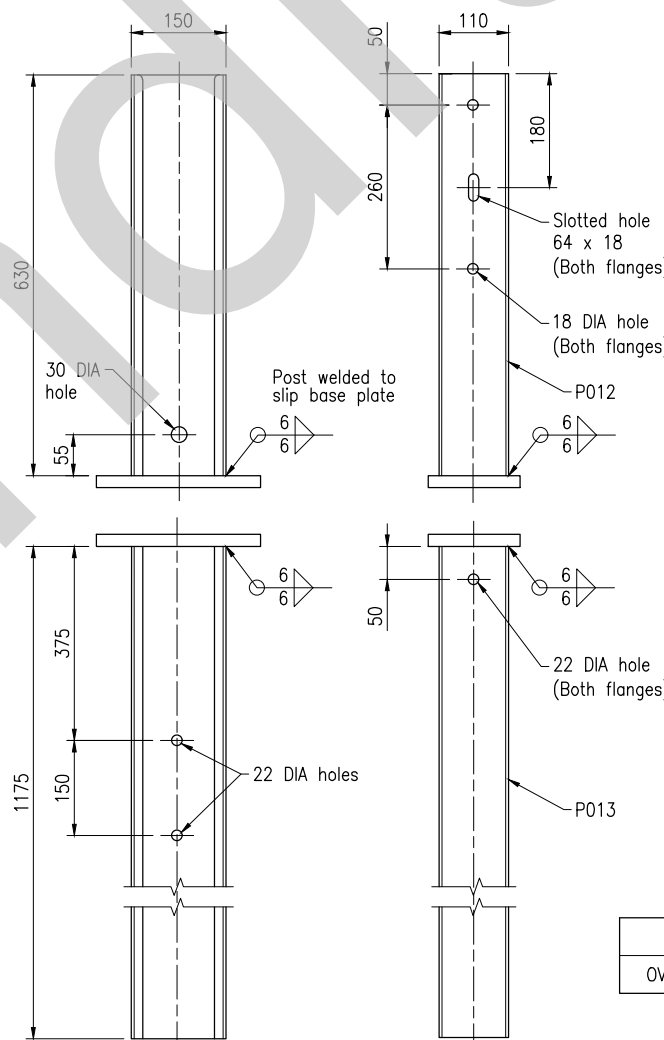
(W beam post P001 to be used with transition Blockout Piece P005)



BLOCKOUT PIECE – W BEAM (P002)

BLOCKOUT PIECE – THRIE BEAM (P004)
– TRANSITION (P005)

(Dimensions for Transition Blockout P005 shown in brackets)



SLIP BASE POSTS
TOP (P012)
BOTTOM (P013)

TOLERANCES	
OVERALL LENGTH	±5mm

NOTES:

1. POSTS are from 4.3 BMT plate grade HA300 in accordance with AS/NZS 1594.
2. BLOCKOUTS are from steel grade HU300 in accordance with AS/NZS 1594, modified three beam blockout from 6 BMT plate and all other blockouts from 4.3 BMT plate.
BMT = Base Metal Thickness.
3. SOIL PLATES shall be fabricated from steel grade 250 in accordance with AS/NZS 1594.
4. BEARING PLATES and SLIP BASE PLATES shall be fabricated from steel grade HA250 in accordance with AS/NZS 3678. Posts to be welded to slip base plates in accordance with AS/NZS 1554.1.
5. WELDING SYMBOLS conform to AS 1101.3.
All welding to conform to AS/NZS 1554.1.
All welds to be SP Category.
Welding consumables for structural steel to be controlled hydrogen type T49X or G49X.
6. POSTS, BLOCKOUTS and PLATES treated to AS 1627 and hot dip galvanised to AS/NZS 4680 after fabrication. Slip base posts to have prior to treatment and galvanizing.
7. FLAME CUTTING of components is not permitted.
8. TIGHTENING OF NUTS: Nut FN01 for slip base plate.
Nut FN05 to cable assembly to be tightened so
All other nuts shall be snug tight to AS 4100.
9. DIMENSIONS are subject to manufacturer's tolerances are nominated.
10. DIMENSIONS are in millimetres unless otherwise stated.



ASSOCIATED DEPARTMENTAL DOCUMENTS:
Standard Drawings Roads Manual
Main Roads Specifications and Technical Standards

REFERENCED DOCUMENTS:
Departmental Standard Specifications:
MRTS14 Road Furniture

Australian Standards:
As shown above

This Standard Drawing is withdrawn. Public domain steel barrier systems are not to be used as Normal Design Domain (NDD) for new projects or installations within the TMR network. However, this drawing can be used for the purposes of maintaining existing installations when repairs and replacements can be reasonably and readily undertaken or if justified and certified by an RPEQ as an Extended Design Domain (EDD) for new installations, where appropriate proprietary products are not suitable/feasible.

Updated Guidance stamp 3/2025

Department of Transport and Main Roads	  <p>© The State of Queensland (Department of Transport and Main Roads) 2013 http://creativecommons.org/licenses/by/3.0/au</p>							
STEEL BEAM GUARDRAIL	<p>Queensland Government</p> <p>A3</p> <p>Standard Drawing No. 1477</p> <p>Not to Scale</p> <p>Date 3/2021 3/2022</p>							
POSTS AND BLOCKOUTS, SOIL AND BEARING PLATES, SLIP BASE PLATE.	<table><tr><td>A</td><td>B</td><td>C</td><td>D</td><td>E</td><td>F</td></tr></table>		A	B	C	D	E	F
A	B	C	D	E	F			