

# Bruce Highway Upgrade

Caboolture-Bribie Island Road to Steve Irwin Way (Exit 163)

Construction notice  
April 2022  
Ref: CN26

## Bruce Highway traffic changes – Pumicestone Road to Caboolture-Bribie Island Road

As part of the Bruce Highway Upgrade – Caboolture-Bribie Island Road to Steve Irwin Way (Exit 163), several traffic changes will be introduced between Pumicestone Road and Caboolture-Bribie Island Road in the coming months.

### Traffic changes

A two-staged traffic change will take place to open the southbound carriageway, and temporarily realign both directions of traffic onto this new section of road. The two stages will include:

- **April 2022:** Upgraded southbound carriageway open to traffic between Pumicestone Road and Caboolture-Bribie Island Road.
- **May 2022:** Northbound traffic realigned between Caboolture-Bribie Island Road and Pumicestone Road. Northbound traffic will remain temporarily on the southbound carriageway until early 2023.

Refer to the map on page two for further details.

### What to expect

- Both stages will be implemented between 7.30pm and 5am when traffic volumes are lower.
- Lane closures, short-term temporary traffic stoppages and reduced speed limits can be expected while traffic changes are implemented. Police and traffic control will be in place to assist and direct motorists.
- Signs will be installed to alert motorists of the changed traffic conditions and to avoid confusion.
- Once implemented, two lanes of traffic will be maintained in each direction on the Bruce Highway at an 80km/h sign-posted speed limit during standard dayshift hours. Additional traffic changes can be expected at night.
- All accesses to and from the highway will be maintained.

### Northbound highway construction

Opening the upgraded Bruce Highway southbound lanes to traffic will allow widening works to begin on the northbound lanes between Caboolture-Bribie Island Road and Pumicestone Road.

Initial works will include site establishment, vegetation trimming and clearing, removal of existing road furniture, pavement profiling, and earthworks.

Once upgraded, the northbound carriageway will include three 3.5m-wide traffic lanes, wider road shoulders, and two new bridges over King John and Lagoon creeks.

### Bridge demolition

From April 2022, work will start to demolish the four existing traffic bridges over King John and Lagoon creeks.

These works will be undertaken in the following stages:

- **April 2022:** King John Creek and Lagoon Creek southbound
- **May 2022:** King John Creek and Lagoon Creek northbound.

Bridge demolition will involve concrete saw cutting, hammering, concrete crushing, and loading activities. Specialised heavy construction equipment and machinery will be used, including excavators and rock hammers. Increased truck haulage can also be expected.

Demolition works will generally be undertaken during standard dayshift hours; however, some night works may be required. Information will be distributed to surrounding residents prior to any high-impact night activities.

Every effort will be made to minimise the impacts while these works are underway. However local residents can expect audible noise, dust and low levels of vibration while demolition activities are carried out.

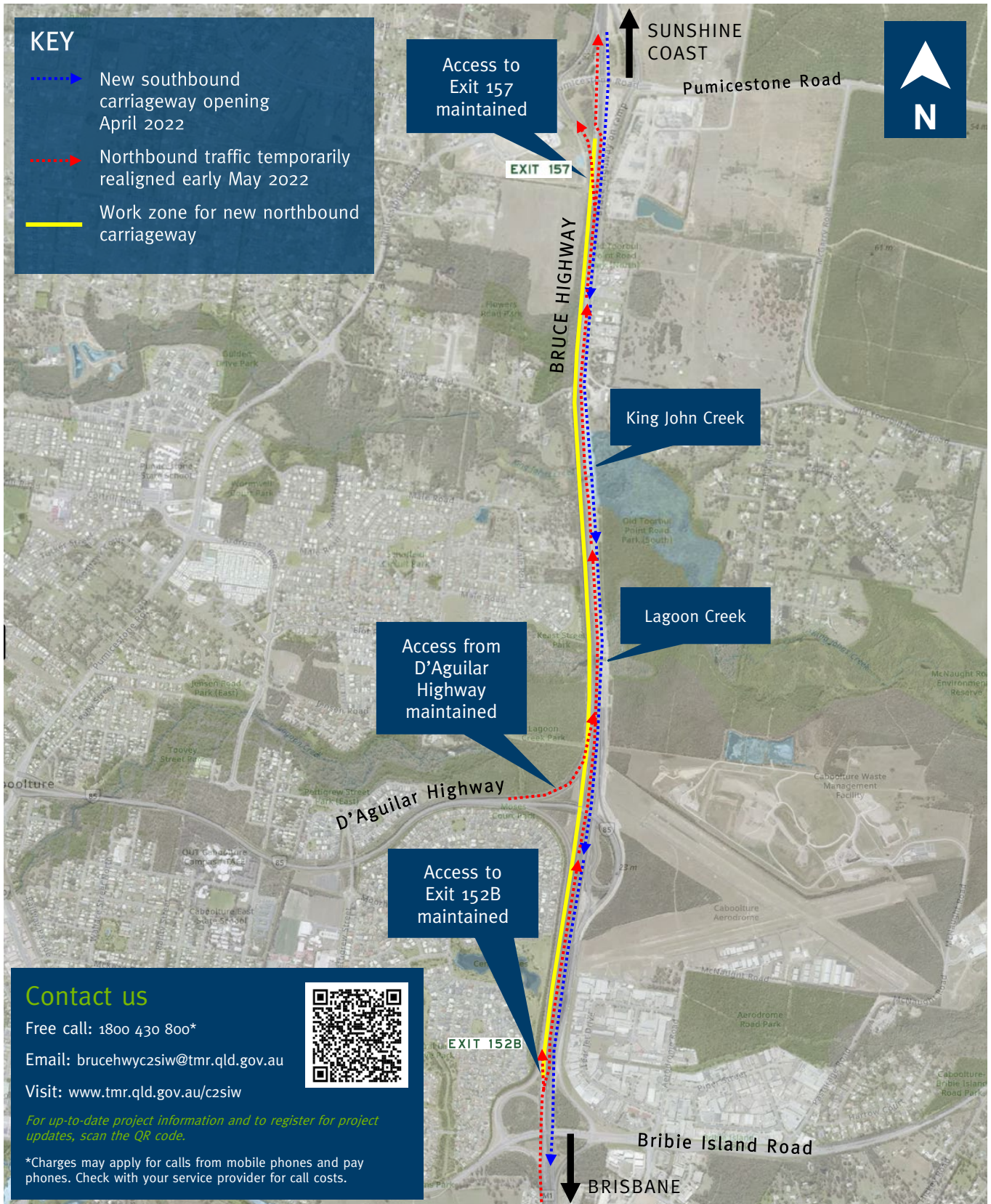


Australian Government

**BUILDING OUR FUTURE**



Queensland Government



Australian Government

**BUILDING OUR FUTURE**



Queensland Government