

Bruce Highway Upgrade

Caboolture-Bribie Island Road to Steve Irwin Way (Exit 163)

Construction notice
November 2022
Ref: CN28A

Bruce Highway traffic changes – Steve Irwin Way (Exit 163) to Pumicestone Road

Construction is progressing well on the Bruce Highway Upgrade – Caboolture-Bribie Island Road to Steve Irwin Way (Exit 163), with two more traffic changes introduced between Steve Irwin Way (at Exit 163) and Pumicestone Road.

These switches have seen the final section of the new southbound highway carriageway open to traffic, including the three new bridges at Six Mile Creek, Un-named Creek and Beerburrum Creek. This will significantly improve flood immunity along this important section of national road network.

Traffic changes

The following traffic changes were introduced.

- Southbound traffic has been diverted onto the remaining section of the new southbound carriageway between Steve Irwin Way (at Exit 163) and Six Mile Creek. Refer to Figure 1.
- Northbound traffic is temporarily diverted onto the new southbound carriageway from Steve Irwin Way (Exit 163) to Pumicestone Road. Refer to Figures 2 and 3.

- The northbound Pumicestone Road entry ramp and northbound Steve Irwin Way exit ramp (Exit 163) are temporarily realigned.
- Two lanes of traffic are maintained in each direction.

Northbound traffic will temporarily remain on the southbound carriageway until late 2023.

Northbound highway carriageway works

With all traffic switched to the new southbound highway carriageway, road widening works have begun on the northbound lanes between Steve Irwin Way (at Exit 163) and Pumicestone Road. This includes demolition of the existing bridges over Six Mile Creek, Un-named Creek and Beerburrum Creek.

Once upgraded, the northbound carriageway will include three 3.5m-wide traffic lanes, wider road shoulders, and three new bridges to withstand a 1-in-100-year flood.

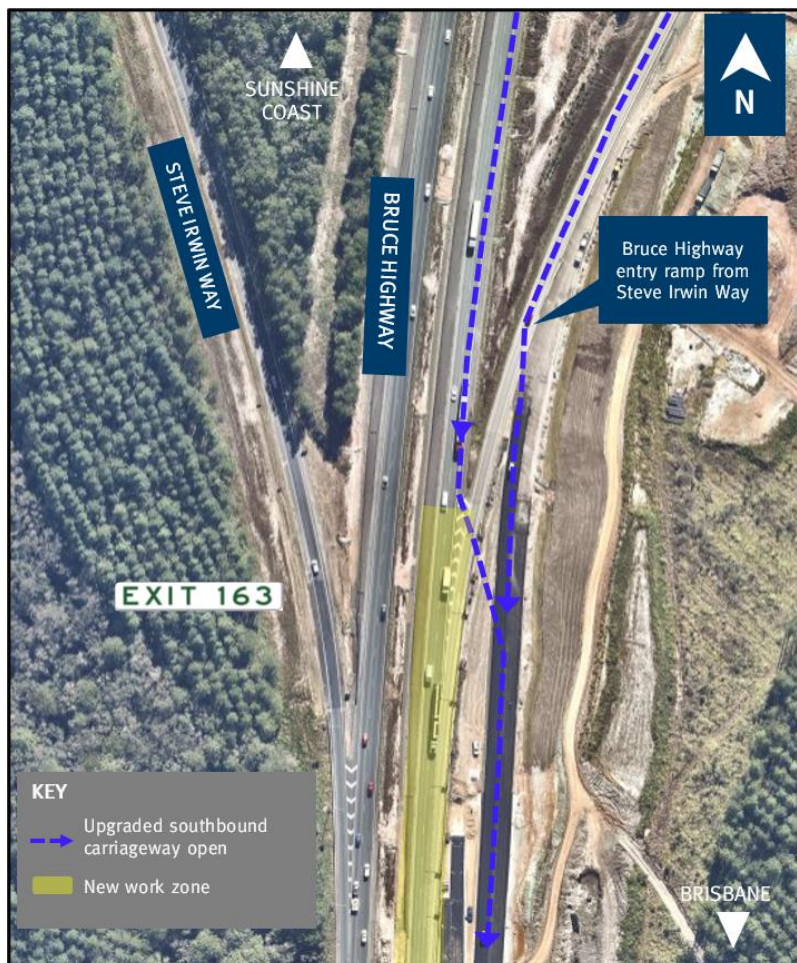


Figure 1: Realigned southbound Bruce Highway traffic



Bruce Highway Upgrade

Caboolture-Bribie Island Road to Steve Irwin Way (Exit 163)

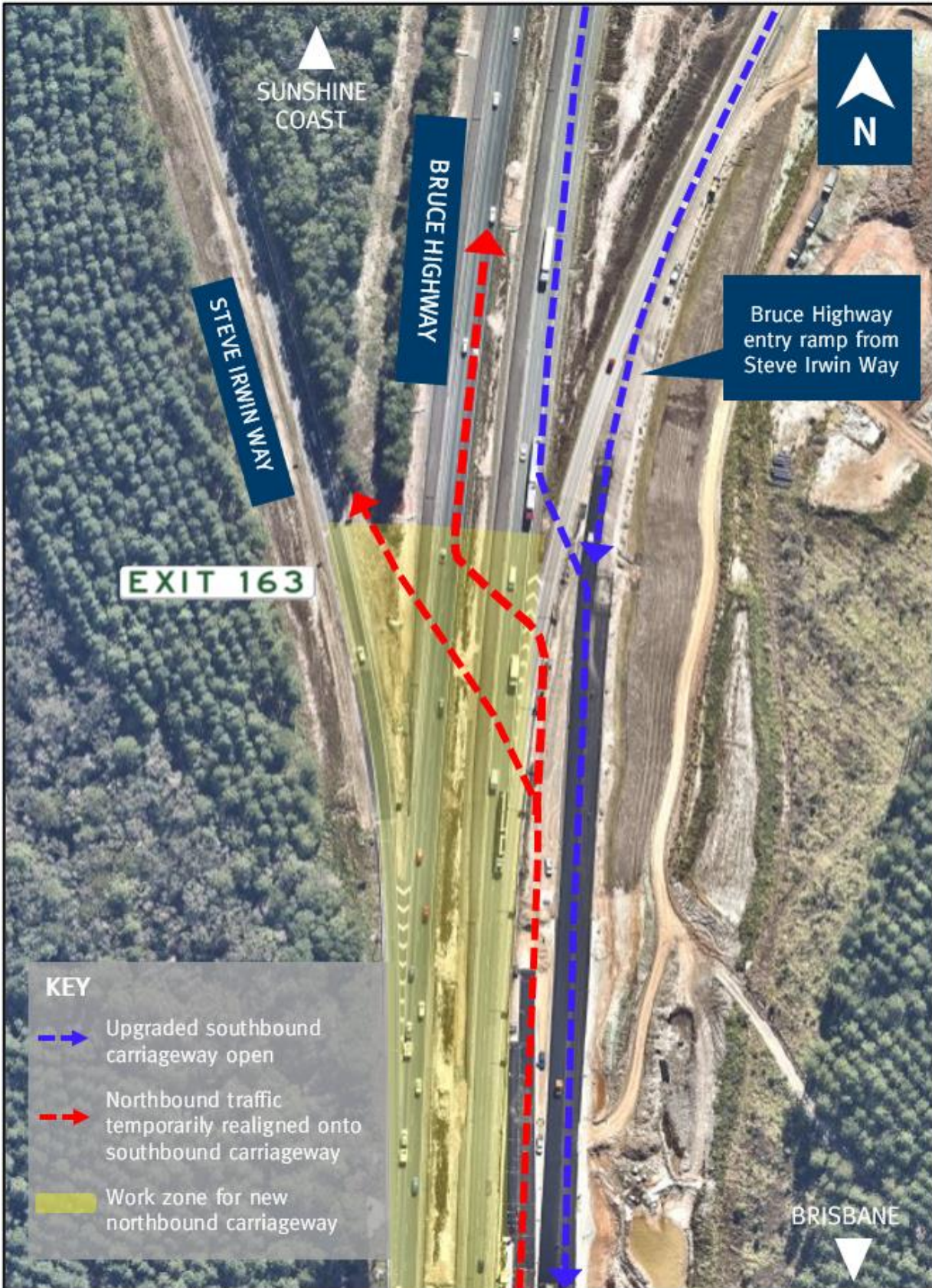


Figure 2: Realigned northbound Bruce Highway traffic at Steve Irwin Way (Exit 163)

Bruce Highway Upgrade

Caboolture-Bribie Island Road to Steve Irwin Way (Exit 163)

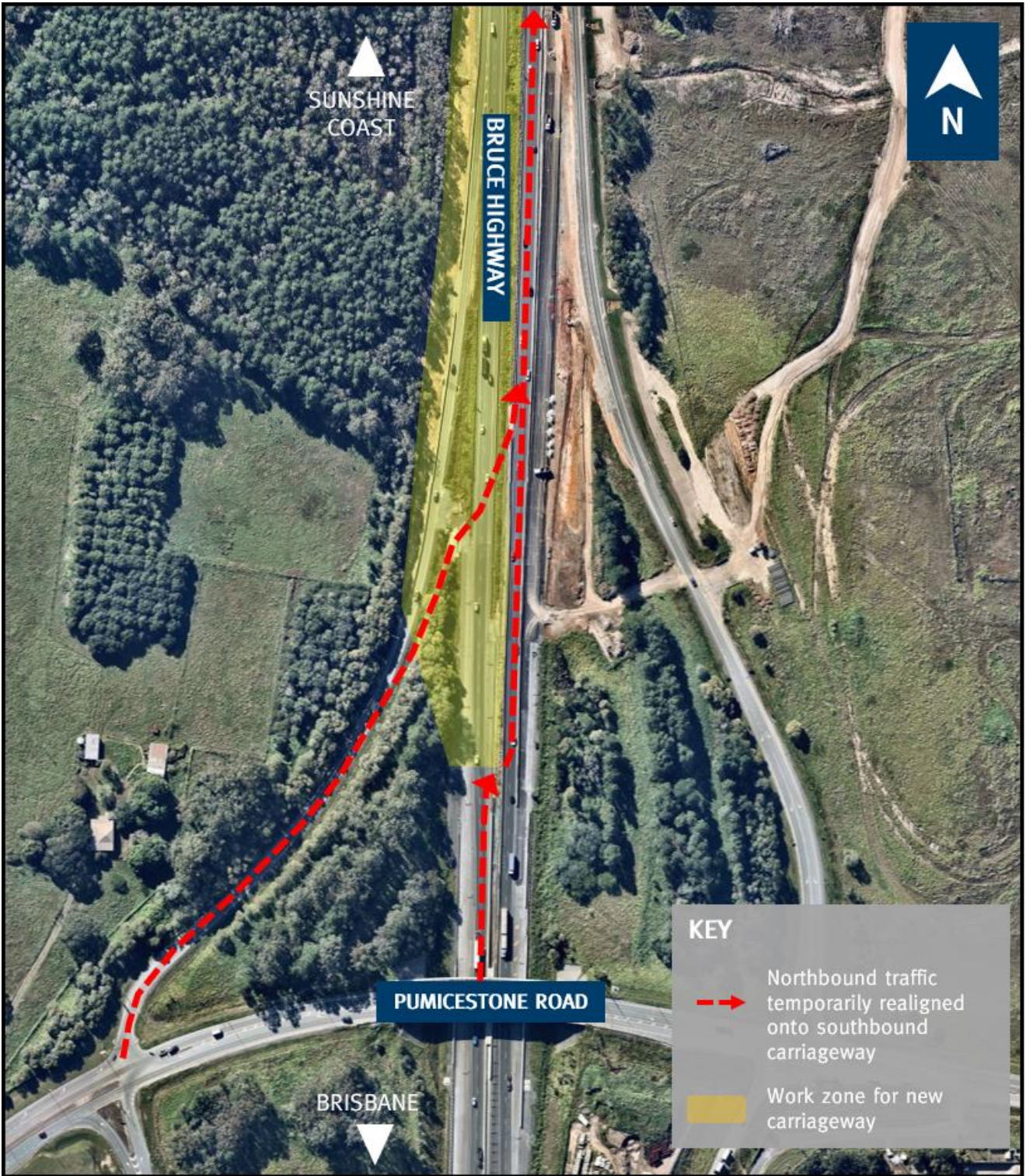


Figure 3: Realigned northbound Bruce Highway traffic at Pumicestone Road