

Bruce Highway Upgrade

Caloundra Road to Sunshine Motorway

Construction notice

March 2021

Ref: CN92a

Notice to motorists and residents

Permanent closure of the Pignata Road entry ramp to Bruce Highway southbound

Construction on the jointly-funded Bruce Highway Upgrade – Caloundra Road to Sunshine Motorway (CR2SM) is progressing well. The \$932 million project is jointly-funded with the Australian Government committing \$745.6 million and the Queensland Government committing \$186.4 million.

Residents and motorists are advised that traffic changes will continue to occur on major and local roads to facilitate ongoing construction works.

From mid-April 2021, the Bruce Highway southbound entry ramp from Pignata Road will be permanently closed in accordance with the final design for the CR2SM project. A cul-de-sac will be constructed at the southern end of Pignata Road with provision for emergency services access to the Bruce Highway (see map below).

We thank the local community for your patience and cooperation during these works.

What to expect

The entry ramp will be permanently closed to meet design requirements for the final increased speed of 110km on the new Bruce Highway carriageway.

All local traffic travelling southbound from Palmview and Glenview will travel along the newly constructed Frizzo Connection Road to connect to Steve Irwin Way, Caloundra Road or the Bruce Highway (refer to map overleaf).

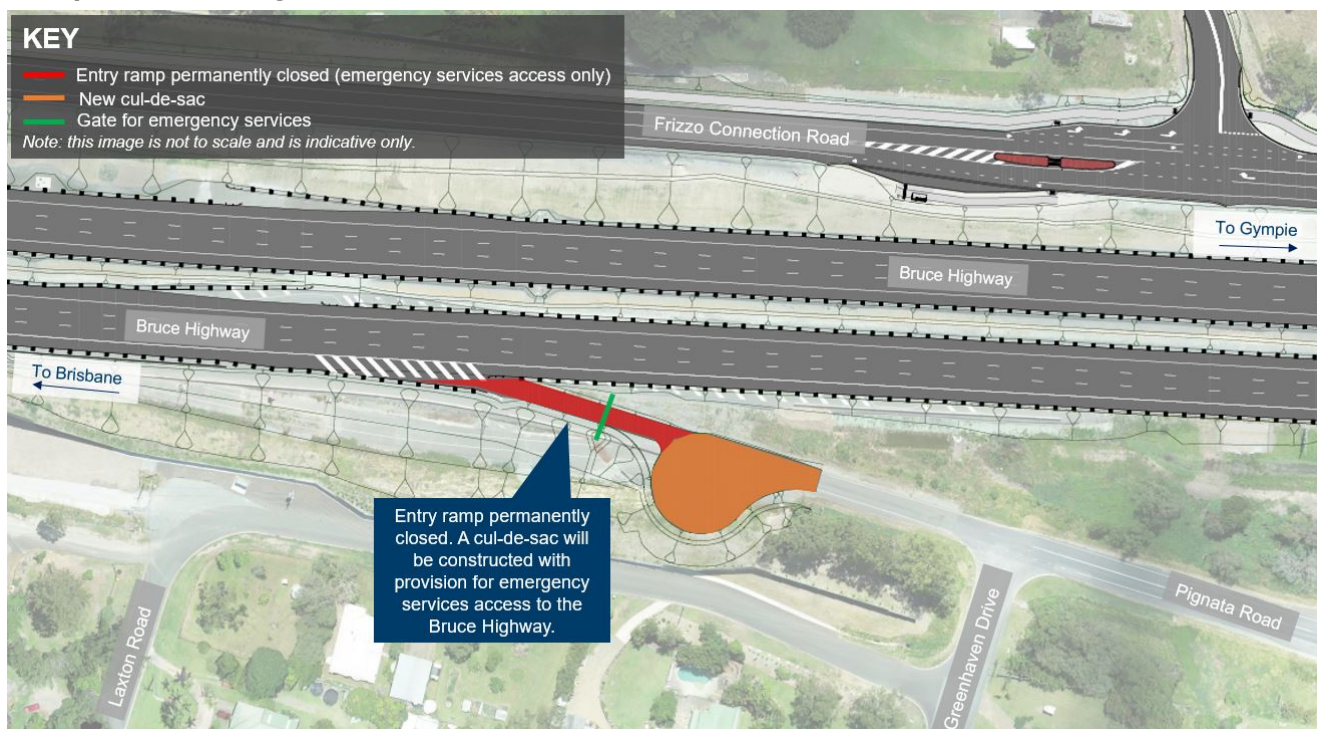
Working hours

Both day and night works will be required to complete these works.

The project's working hours are:

- **Night works:** Sunday to Thursday, 7pm to 5am.
- **Day works:** Monday to Saturday, 6am to 6pm.

It is important to note that these activities are dependent on weather conditions.



Australian Government

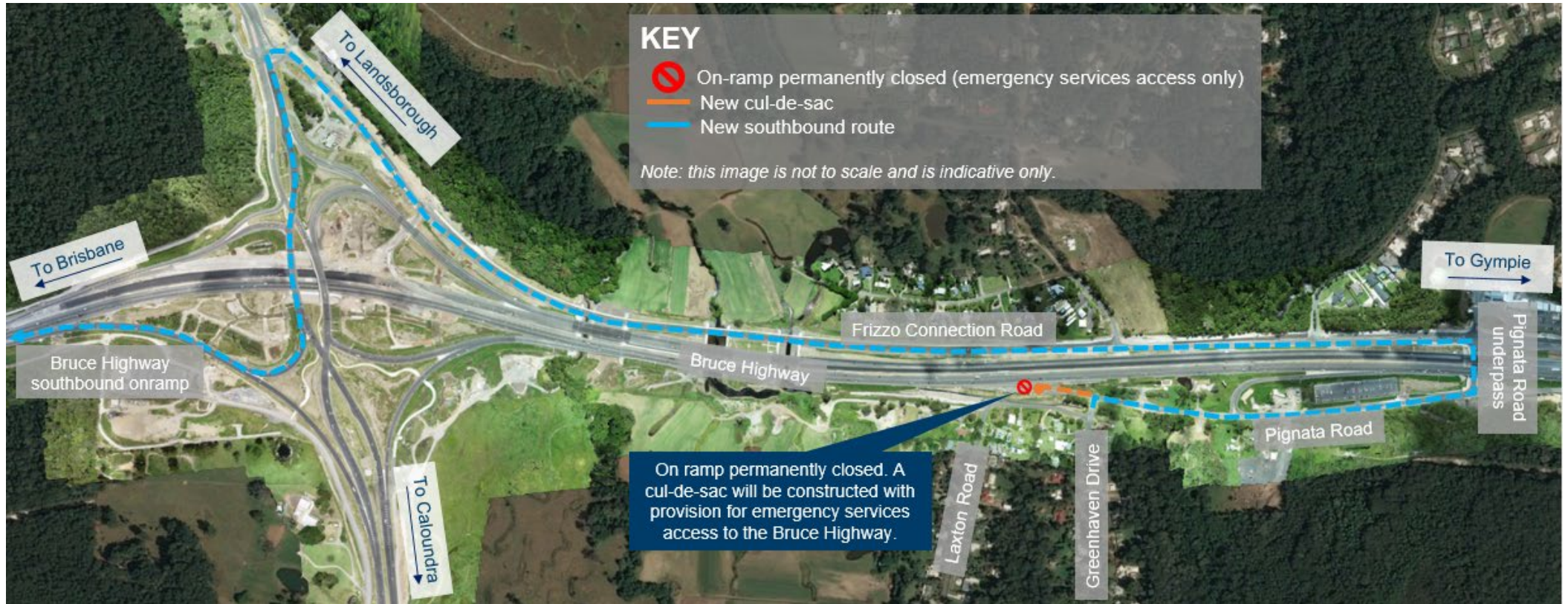
BUILDING OUR FUTURE



Queensland Government

New southbound route for Glenview and Palmview motorists

All local traffic travelling southbound from Palmview and Glenview will travel along Frizzo Connection Road to connect to Steve Irwin Way, Caloundra Road and the Bruce Highway.



Sign up for traffic alerts and project information

To stay up-to-date on construction activities via the free project SMS or email service, register by:

- scanning the QR code to go the project webpage
- entering your details at the "subscribe to updates" section.



Contact us

Free call: 1800 749 022*

Email: brucehwycr2sm@tmr.qld.gov.au

Visit: www.tmr.qld.gov.au (search for 'Caloundra Road interchange')

*Charges may apply for calls from mobile phones and pay phones. Check with your service provider for call costs.