

# Bruce Highway Upgrade

## Deception Bay Road Interchange

### January project update

Construction notice  
January 2021  
Ref: CN08

The Bruce Highway Upgrade – Deception Bay Road Interchange (DBRIU) project will deliver two new parallel bridges over the Bruce Highway, upgrade two signalised intersections on Deception Bay Road, increase the length and capacity of the existing entry and exit ramps and provide new infrastructure for pedestrians and bike riders.

### January overview

The DBRIU team wishes you a happy New Year. This is going to be a big year for construction on the project with activity being undertaken daily across the work site. During January, our focus will be on continuing earthworks, drainage works and piling for the first of the two new bridges across the Bruce Highway.

### Works planned for January:

#### Bruce Highway

- Earthworks, drainage works and piling for the new highway bridge will continue in January. These works will be conducted during the day.

#### Old Gympie Road

- Barriers are now in place on Old Gympie Road to allow workers to safely carry out most of the works during the day. Some night works planned for mid-January.
- The traffic lanes on Old Gympie Road have been realigned, with signs and barriers installed. Construction vehicles will be entering and exiting the work site in this area.

#### New Settlement Road

- Drainage infrastructure and culverts will be installed on both sides of the intersection of New Settlement and Old Gympie Road during the day.
- Barriers will be installed on New Settlement Road and the northbound entry ramp to the highway during the night.

#### Deception Bay Road

- Roadworks will occur between Tallowood Drive and the Bruce Highway during the day.
- Barriers will be installed on Deception Bay Road during night works.
- Night works will also occur from mid to late January to remove the centre median.



Australian Government

**BUILDING OUR FUTURE**

### Eastern Service Road

- Vegetation clearing and earth works during the day. Single lane closures will be in place as required.

### What to expect:

- **Traffic control:** Localised traffic changes including reduced speed limits, lane and ramp closures, minor traffic disruptions and detours. Traffic controllers may be in place to assist and direct road users. Priority access through the work zone will be given to emergency vehicles, wherever safe to do so.
- **Audible noise and dust:** Audible noise and increased dust from construction activities, heavy machinery and vehicles can be expected. Reversing beepers and flashing lights are a safety requirement and will be used at all times during work hours.
- **Increased construction traffic:** Residents can expect increased construction traffic travelling near the work zones.
- **Temporary lighting:** Lighting towers will be used to light work areas at night.
- **Access:** Access to residential properties and businesses will be maintained at all times.

***We thank you for your patience and cooperation during these works.***

### Working hours

Day works will be undertaken wherever possible. However, night works will be required where the works are in close proximity to live traffic. This will ensure the safety of motorists and workers.

#### Night works:

- between 7pm and 5am, Sunday to Thursday.

#### Day works:

- between 6am and 6pm, Monday to Friday
- between 7am and 2pm on Saturday.

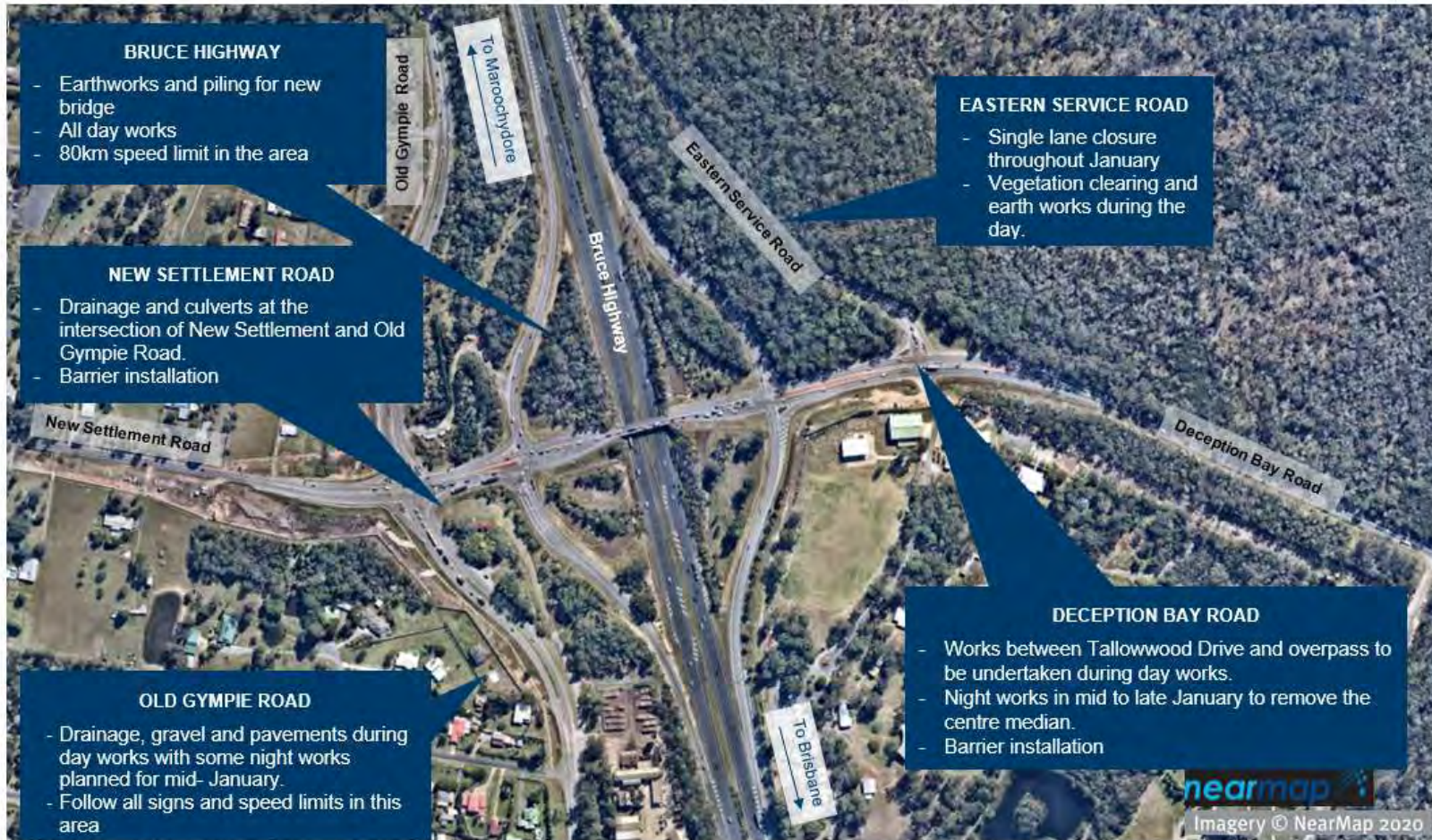
***All works are subject to weather and construction conditions.***



Queensland Government

# Bruce Highway Upgrade – Deception Bay Road Interchange

## Key construction activities in January 2021



## Project information

For up-to-date information on changed traffic conditions across Queensland, go to [www.qldtraffic.qld.gov.au](http://www.qldtraffic.qld.gov.au) or call 13 19 40.

For up-to-date project information, scan the QR code to visit the project webpage.



Or head to [www.tmr.qld.gov.au](http://www.tmr.qld.gov.au) (search for 'Deception Bay Road')

## Contact us

**Free call:** 1800 213 995\*

**Email:** [dbriu@tmr.qld.gov.au](mailto:dbriu@tmr.qld.gov.au)

\* Charges may apply for calls from mobile phones and pay phones. Check with your service provider for call costs.