

Bruce Highway Upgrade

Deception Bay Road Interchange

Construction notice
February 2021
Ref: CN09

February project update

The Bruce Highway Upgrade – Deception Bay Road Interchange project will deliver two new parallel bridges over the Bruce Highway, upgrade two signalised intersections on Deception Bay Road, increase the length and capacity of the existing entry and exit ramps and provide new infrastructure for pedestrians and bike riders.

February 2021 overview

During February, there will be an increase in earthworks and drainage across the project footprint. This includes an increase in heavy construction machinery and traffic, deliveries and personnel working in all areas.

Works planned for February:

Bruce Highway and bridge works

- Construction of the new bridges over the Bruce Highway will continue in February. Single lane closures may be required at night.
- Early concrete pours for bridge works will start at 5am.
- Piling for the northbound highway entry ramp bridge, parallel to Old Gympie Road, will begin during day works.

Old Gympie Road

- Earthworks including clearing and grubbing, drainage and pavement works will occur on Old Gympie Road.

New Settlement Road

- Earthworks, drainage and pavement works will occur on New Settlement Road.
- The speed limit will be reduced to 40km/h through the work zone.

Deception Bay Road

- Earthworks, drainage and pavement works will occur on Deception Bay Road.
- The speed limit will be reduced to 40km/h through the work zone.

Eastern Service Road

- Earthworks, drainage and pavement works will occur on the Eastern Service Road. Single lane closures may be in place during pavement works at night.

All works are subject to weather and construction conditions.

What to expect:

- **Southbound Bruce Highway exit ramp detour:** The southbound exit ramp (Exit 142) to Deception Bay Road will be closed for five nights from 7 to 11 February, between 7pm and 5am. Traffic will be detoured via the southbound exit ramp (Exit 138) to Boundary Road and cross the highway bridge to return to the Bruce Highway northbound.
- **Traffic control:** Other localised traffic changes will be in place including reduced speed limits, lane closures and minor traffic disruptions. Traffic controllers may be in present to assist and direct road users. Priority access through the work zone will be given to emergency vehicles, wherever safe to do so.
- **Night works:** Works at night will include installation of traffic barriers, and underground service investigations at the intersections of Old Gympie Road and New Settlement Road, and Deception Bay Road and the Eastern Service Road. Potential vegetation clearing will also occur near the southbound highway entry ramp.
- **Audible noise and dust:** Audible noise and increased dust from construction activities, heavy machinery and vehicles can be expected. Reversing beepers and flashing lights are a safety requirement and will be used at all times during work hours.
- **Access:** Access to residential properties and businesses will be maintained as needed

Working hours

Day works will be undertaken wherever possible. However, night works will be required where the works are in close proximity to live traffic.

Night works:

- between 7pm and 5am, Sunday to Thursday.

Day works:

- between 6am and 6pm, Monday to Friday
- between 7am and 5pm on Saturday.

We thank you for your patience and cooperation during these works.



Australian Government

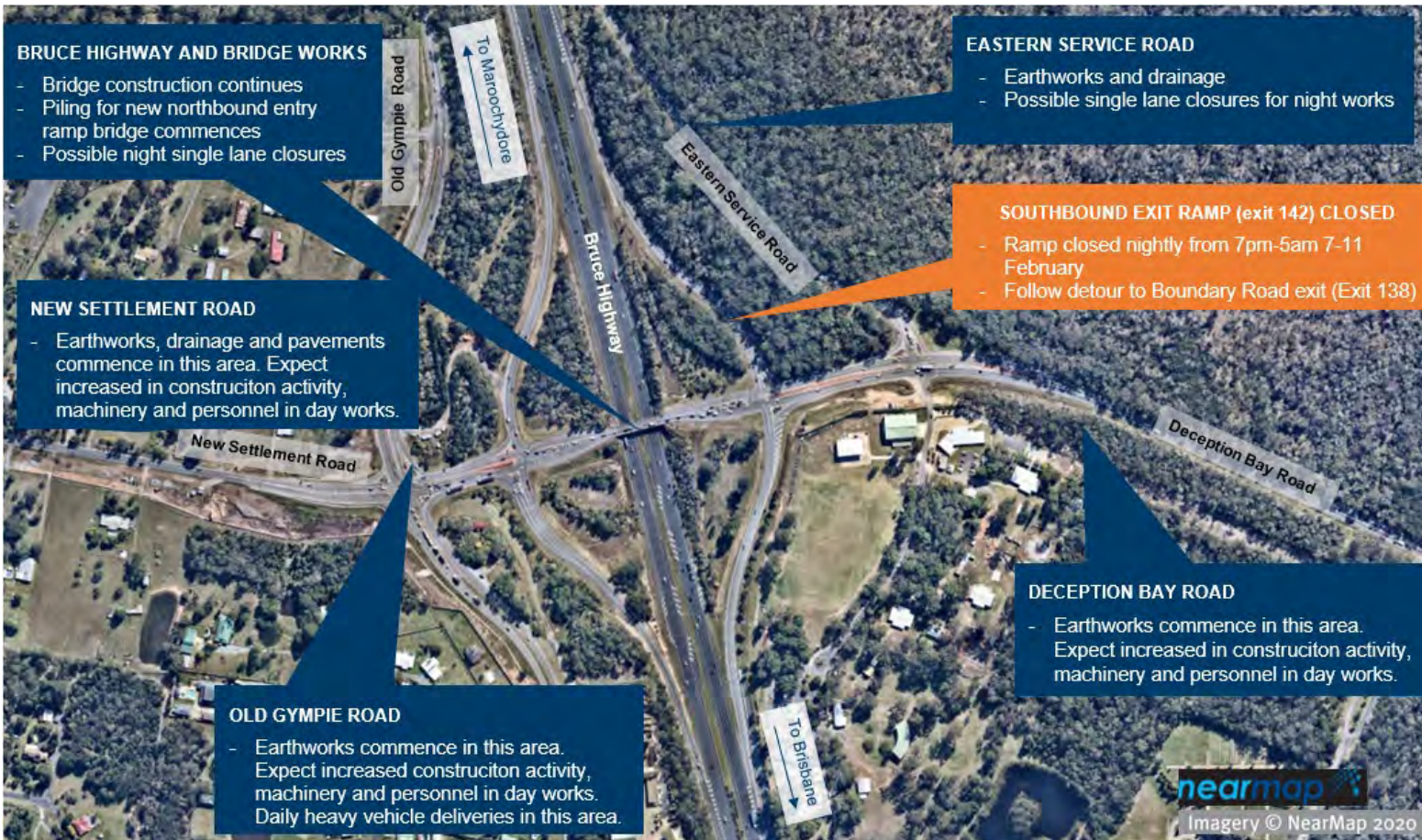
BUILDING OUR FUTURE



Queensland Government

Bruce Highway Upgrade – Deception Bay Road Interchange

Key construction activities in February 2021



Project information

For up-to-date information on changed traffic conditions across Queensland, go to www.qldtraffic.qld.gov.au or call 13 19 40.

For up-to-date project information, scan the QR code to visit the project webpage.



Or head to www.tmr.qld.gov.au (search for 'Deception Bay Road').

Contact us

Free call: 1800 213 995*

Email: dbriu@tmr.qld.gov.au

* Charges may apply for calls from mobile phones and pay phones. Check with your service provider for call costs.

13 QGOV (13 74 68)

www.tmr.qld.gov.au | www.qld.gov.au