

# Bruce Highway Upgrade

## Deception Bay Road Interchange

Construction notice  
March 2021  
Ref: CN10

## March project update

The Bruce Highway Upgrade – Deception Bay Road Interchange project will deliver two new parallel bridges over the Bruce Highway, upgrade two signalised intersections on Deception Bay Road, increase the length and capacity of the existing entry and exit ramps and provide new infrastructure for pedestrians and bike riders.

### March 2021 overview

During March, earthworks and drainage will continue. This includes an increase in heavy construction machinery and traffic, deliveries and personnel working in all areas.

### Works planned for March

#### Bruce Highway and bridge works:

- Construction of the new bridges over the Bruce Highway and Little Burpengary Creek will continue.
- Temporary single lane closures on Bruce Highway may be required at night.
- Early concrete pours for bridge works will start at 4.30am.

#### Old Gympie Road:

- Earthworks including drainage and road pavement works will occur on Old Gympie Road.
- Night works and traffic changes will be undertaken at intersections.
- Deliveries and construction traffic will be in the area.

#### New Settlement Road:

- Earthworks, drainage and road pavement works will continue on New Settlement Road and the corner of Old Gympie Road.
- The speed limit will be reduced to 40km/h through the work zone.

#### Deception Bay Road:

- Earthworks, drainage and road pavement works will occur on Deception Bay Road.
- The speed limit will be reduced to 40km/h through the work zone.
- Piling works are complete and bridge works will continue on the corner of Deception Bay Road and the southbound entry ramp to the Bruce Highway.

#### Eastern Service Road:

- Earthworks, drainage and road pavement works will occur on the Eastern Service Road. Single lane closures will be required for works at night. Traffic signals will be in place in the area.

**All works are subject to weather and construction conditions.**

#### What to expect:

- **Traffic control:** Increased local traffic changes will be in place including reduced speed limits, temporary lane closures and minor traffic disruptions. Traffic controllers may be present to assist and direct road users. Priority access through the work zone will be given to emergency vehicles, wherever safe to do so.
- **Night works:** Works at night will include installation of traffic barriers and underground service investigations and installations at the intersections of Old Gympie Road and New Settlement Road, and Deception Bay Road and the Eastern Service Road. Lane closures will be in place along the Bruce Highway.
- **Audible noise and dust:** Audible noise and increased dust from construction activities, heavy machinery and vehicles can be expected. Reversing beepers and flashing lights are a safety requirement and will be used at all times during work hours.
- **Access:** Access to residential properties and businesses will be maintained as needed.

#### Working hours

Day works will be undertaken wherever possible. However, night works will be required where the works are in close proximity to live traffic.

#### Night works:

- between 7pm and 5am, Sunday to Thursday.

#### Day works:

- between 6am and 6pm, Monday to Friday
- between 7am and 5pm on Saturday.

**We thank you for your patience and cooperation during these works.**



Australian Government

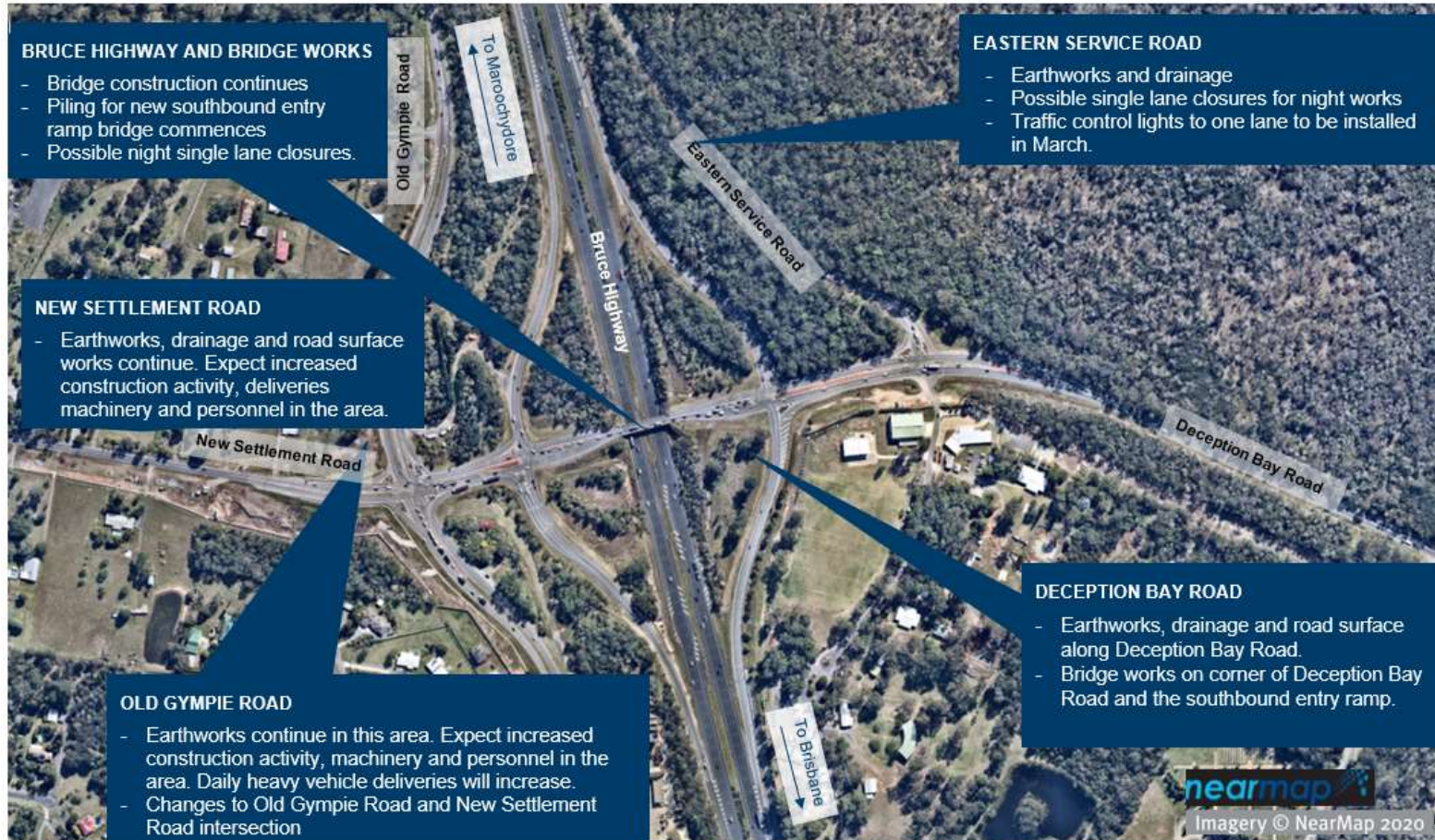
**BUILDING OUR FUTURE**



Queensland Government

# Bruce Highway Upgrade – Deception Bay Road Interchange

## Key construction activities in March 2021



## Project information

For up-to-date information on changed traffic conditions across Queensland, go to [www.qldtraffic.qld.gov.au](http://www.qldtraffic.qld.gov.au) or call 13 19 40.

For up-to-date project information, scan the QR code to visit the project webpage.



Or head to [www.tmr.qld.gov.au](http://www.tmr.qld.gov.au) (search for 'Deception Bay Road').

## Contact us

**Free call:** 1800 213 995\*

**Email:** [dbriu@tmr.qld.gov.au](mailto:dbriu@tmr.qld.gov.au)

\* Charges may apply for calls from mobile phones and pay phones. Check with your service provider for call costs.

13 QGOV (13 74 68)

[www.tmr.qld.gov.au](http://www.tmr.qld.gov.au) | [www.qld.gov.au](http://www.qld.gov.au)