

# Bruce Highway Upgrade

## Maroochydore Road and Mons Road Interchanges

Construction notice  
March 2021  
Ref: CN23

### Notice to motorists

#### Maroochydore Road Interchange - bridge girder installation

The Department of Transport and Main Roads (TMR) would like to update you on upcoming bridge work construction activities occurring at the Maroochydore Road interchange.

#### Bridge girder installation night work

Large concrete bridge girders will be lifted into place at the Maroochydore Road interchange from the week commencing **Monday 15 March 2021**. The girders will form the deck of the new four-lane eastbound bridge.

These works are expected to take up to six nights to complete (weather and construction conditions permitting).

Please refer to the map overleaf for the location of the work zone.

Each of the girders will be transported to the work zone on a long truck and will be lifted into place by a large crane.

Bruce Highway traffic will be diverted through the interchange during this work. This is required to maintain the safety of motorists and construction workers.

Motorists using the interchange during this work can expect minor delays. Directional signage and traffic controllers will be in place to direct motorists. Please allow extra travelling time if you are driving through this area.

#### Working hours

Due to the nature of this work and its proximity to live traffic, this work has to be undertaken at night when the traffic volumes are lower, for the safety of road users and construction workers.

#### Night work hours:

- Between 6.30pm and 5am, Sunday to Thursday.

#### What to expect:

- **Traffic control:** Localised traffic changes will be in place including traffic controllers, reduced speed limits and diversions of Bruce Highway traffic up and over the Maroochydore Road interchange.
- **Audible noise:** Audible noise from construction activities can be expected. Heavy machinery, including a large crane will be in place to safely lift the bridge girders into place. Reversing beepers and flashing lights are a safety requirement and will be used at all times during work hours.
- **Increased construction traffic:** Residents can expect increased construction traffic, including large trucks travelling near the work zones.
- **Temporary lighting:** Lighting towers will be used to light work areas at night.

*We apologise for any inconvenience these works and changed traffic conditions may cause and thank the local community for your patience and co-operation.*



Australian Government

**BUILDING OUR FUTURE**

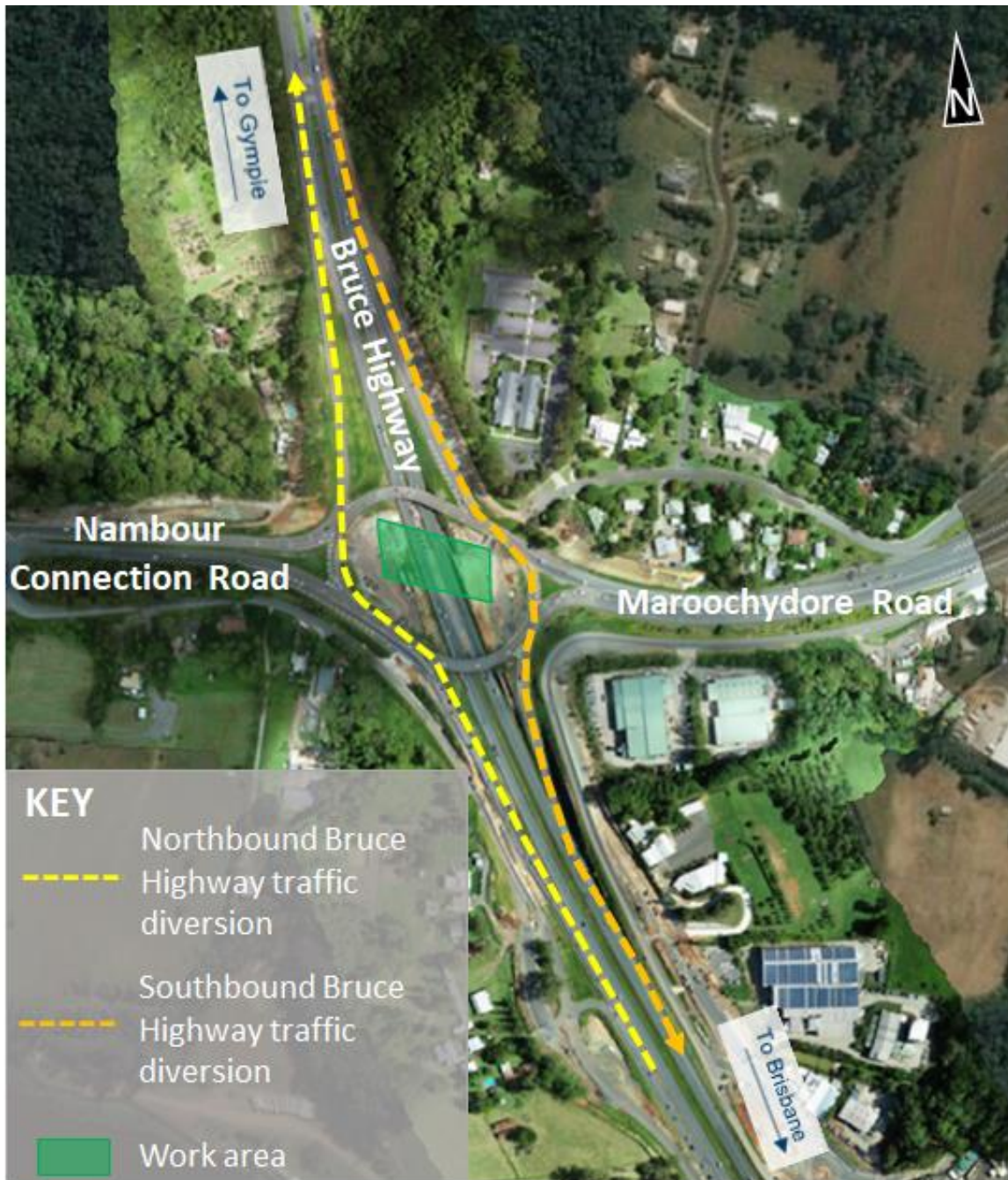


Queensland Government

# Bruce Highway Upgrade

## Maroochydore Road and Mons Road Interchanges

### Maroochydore Road Interchange - temporary traffic changes



### Contact us

For more information or to register for project updates, please contact the project team on:

**Call:** 1800 512 211\*

**Email:** [bhmip@tmr.qld.gov.au](mailto:bhmip@tmr.qld.gov.au)

**For up-to-date project information visit the project web page.**

**Visit:** [www.tmr.qld.gov.au](http://www.tmr.qld.gov.au) (search for 'Maroochydore Road Interchange')

\* Charges may apply for calls from mobile phones and pay phones. Check with your service provider for call costs.



*Scan to find out more*

13 QGOV (13 74 68)  
[www.tmr.qld.gov.au](http://www.tmr.qld.gov.au) | [www.qld.gov.au](http://www.qld.gov.au)