

# Bruce Highway Upgrade

Caloundra Road to Sunshine Motorway

**Construction notice**

November 2020

Ref: CN85

## Notice to motorists and residents

### Traffic changes at Glenview

Construction on the jointly-funded Bruce Highway Upgrade – Caloundra Road to Sunshine Motorway (CR2SM) is progressing well. The project is jointly-funded with the Australian Government committing \$745.6 million and the Queensland Government committing \$186.4 million. Motorists are advised that traffic changes will continue to occur on major and local roads to facilitate ongoing construction works.

From week commencing **Sunday 29 November 2020**, a new section of Frizzo Connection Road between Steve Irwin Way Glenview Road will open to northbound traffic.

Once this occurs, the Bruce Highway northbound exit ramp (190) to Glenview will permanently close. Motorists will instead need to use northbound Exit 188 at the Caloundra Road interchange and travel on the new section of Frizzo Connection Road to access Glenview and Palmview. The new connection road is one of the key features of the CR2SM project designed to separate local traffic from highway traffic to improve safety and reduce congestion.

**Note:** the southbound lane of the connection road between Steve Irwin Way and Glenview Road will open in 2021, as will a new direct northbound connection from the Bruce Highway to Frizzo Connection Road.

**See map for more details.**



Artist impression: Diverging Diamond Interchange at Caloundra

### What to expect

- Prior to the traffic changes, detours will be in place to facilitate the work.
- Temporary lane closures to allow for pavement works, signage, guardrail installation and line marking.
- Traffic changes may be in place near work areas including reduced speed limits, road shoulder and lane closures, changes to traffic flow and short-term traffic disruption.
- Traffic controllers will be onsite to manage traffic flow.

### Audible noise:

- Heavy machinery will be in use and nearby residents and campers should expect audible noise.
- Reversing beepers and flashing lights are a safety requirement and will be used at all times during day and night working hours.

### Working hours

Both day and night works will be required to complete these works.

The project's working hours are:

- **Night works:** Sunday to Thursday, 7pm to 5am.
- **Day works:** Monday to Saturday, 6am to 6pm.

It is important to note that these activities are dependent on weather conditions.

**We thank the local community for your patience and cooperation during these works.**



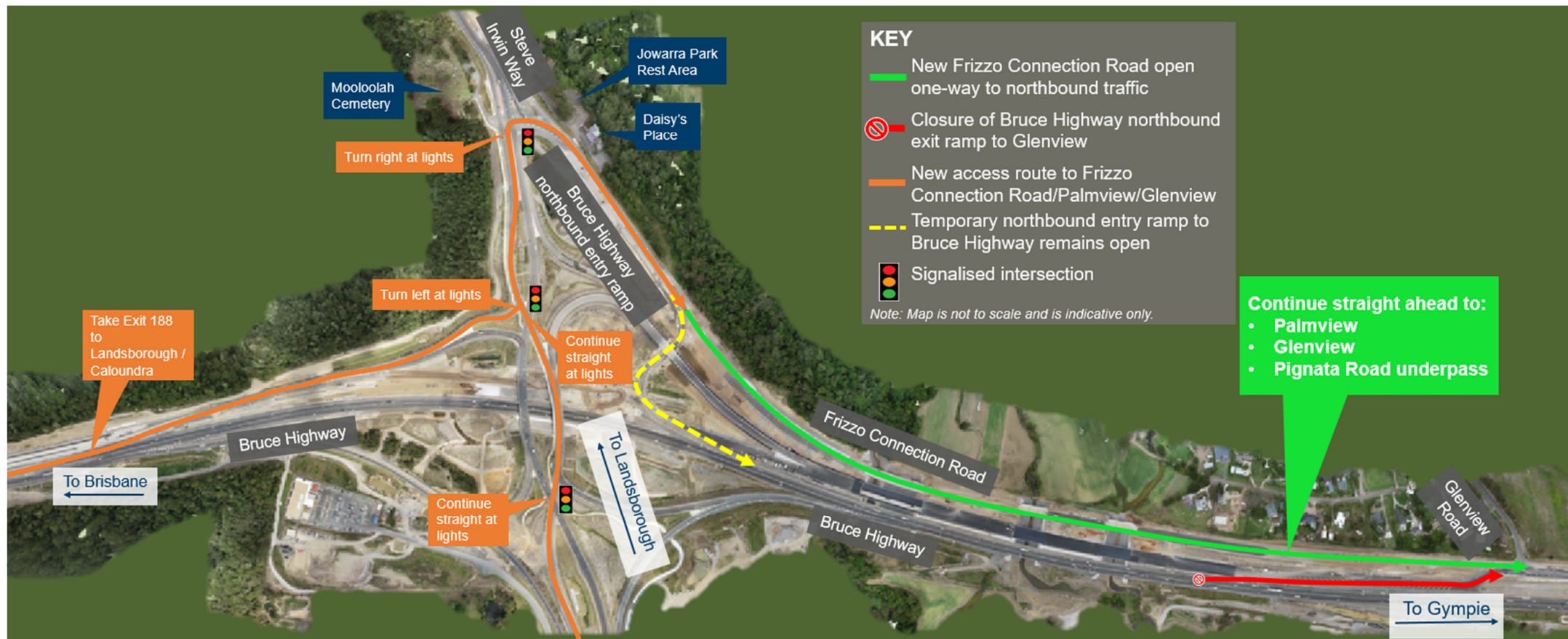
Australian Government

**BUILDING OUR FUTURE**



Queensland Government

## Traffic changes at Frizzo Connection Road and closure of Bruce Highway northbound exit ramp to Palmview/Glenview



## Contact us

**Free call: 1800 749 022\***

**Email:** [brucehwycr2sm@tmr.qld.gov.au](mailto:brucehwycr2sm@tmr.qld.gov.au)

**Visit:** [www.tmr.qld.gov.au](http://www.tmr.qld.gov.au) (search for 'Caloundra Road interchange')

*\*Charges may apply for calls from mobile phones and pay phones. Check with your service provider for call costs.*