

Bruce Highway Upgrade

Caloundra Road to Sunshine Motorway

Construction notice

January 2021

Ref: CN88

Notice to motorists and residents

Temporary detour

Construction on the jointly-funded Bruce Highway Upgrade – Caloundra Road to Sunshine Motorway (CR2SM) is progressing well. The \$932 million project is jointly-funded with the Australian Government committing \$745.6 million and the Queensland Government committing \$186.4 million.

Motorists are advised that traffic changes will continue to occur on major and local roads to facilitate ongoing construction works.

From **27 January 2021** (weather permitting), the CR2SM project team will temporarily detour Frizzo Connection Road via Parkyn Court in Tanawha. The detour will remain in place for approximately six weeks (weather permitting) to complete road, asphalt, and guardrail works.

What to expect

Traffic control and lane closures:

- Traffic changes may be in place near work areas including reduced speed limits, road shoulder and lane closures.
- Traffic controllers will be used to manage traffic flow.

See below map for detailed information.

Audible noise:

- Heavy machinery will be in use and nearby residents should expect audible noise. Reversing beepers and flashing lights are a safety requirement and will be used at all times during day and night working hours.

Working hours

Both day and night works will be required to complete these works. The project's working hours are:

- **Night works:** Sunday to Thursday, 7pm to 5am.
- **Day works:** Monday to Saturday, 6am to 6pm.

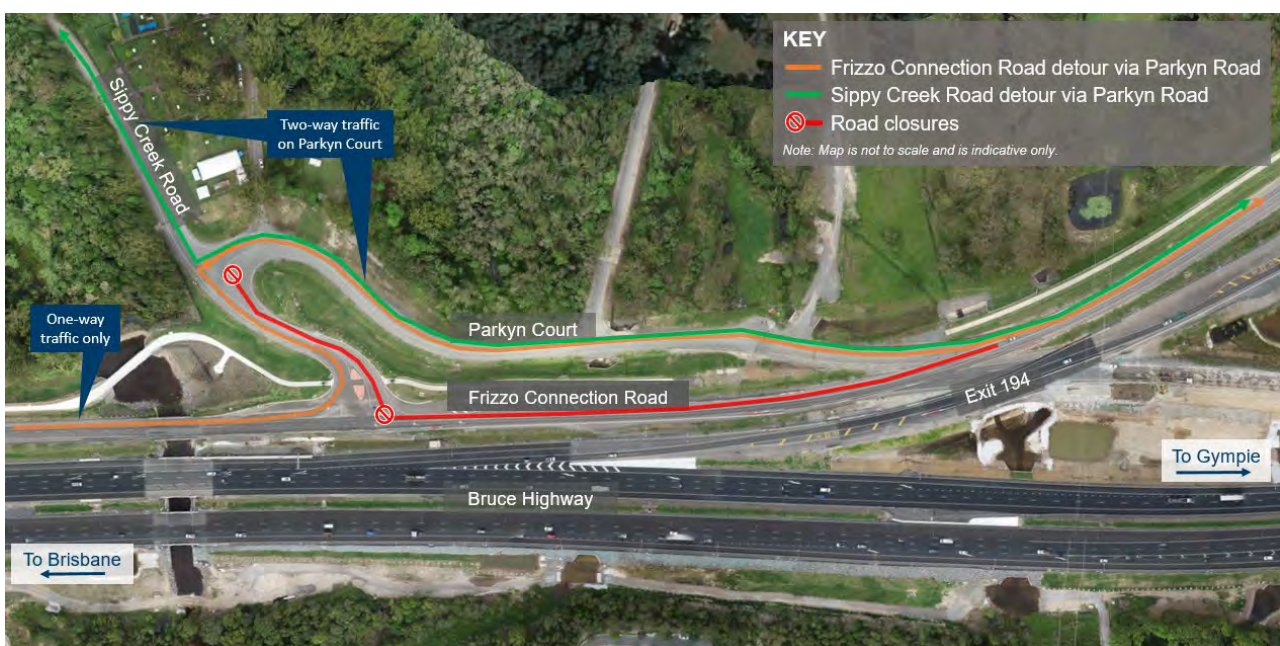
It is important to note that these activities are dependent on weather conditions.

We thank the local community for your patience.

Sign up for traffic alerts and project information

To stay up-to-date on construction activities via the free project SMS or email service, register by:

- scanning the QR code to go the project webpage
- entering your details at the "subscribe to updates" section.



Contact us

Free call: 1800 749 022*

Email: brucehwycr2sm@tmr.qld.gov.au

* Charges may apply for calls from mobile phones and pay phones. Check with your service provider for call costs.

