

# Coomera Connector (Future stages) Loganholme to Coomera

## Concept design 2023





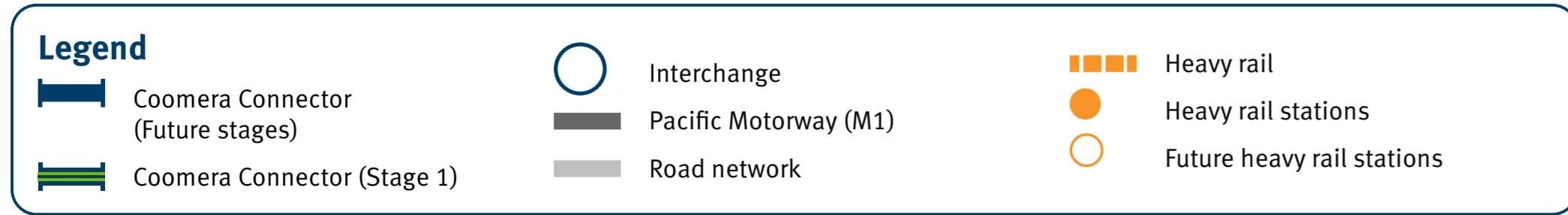
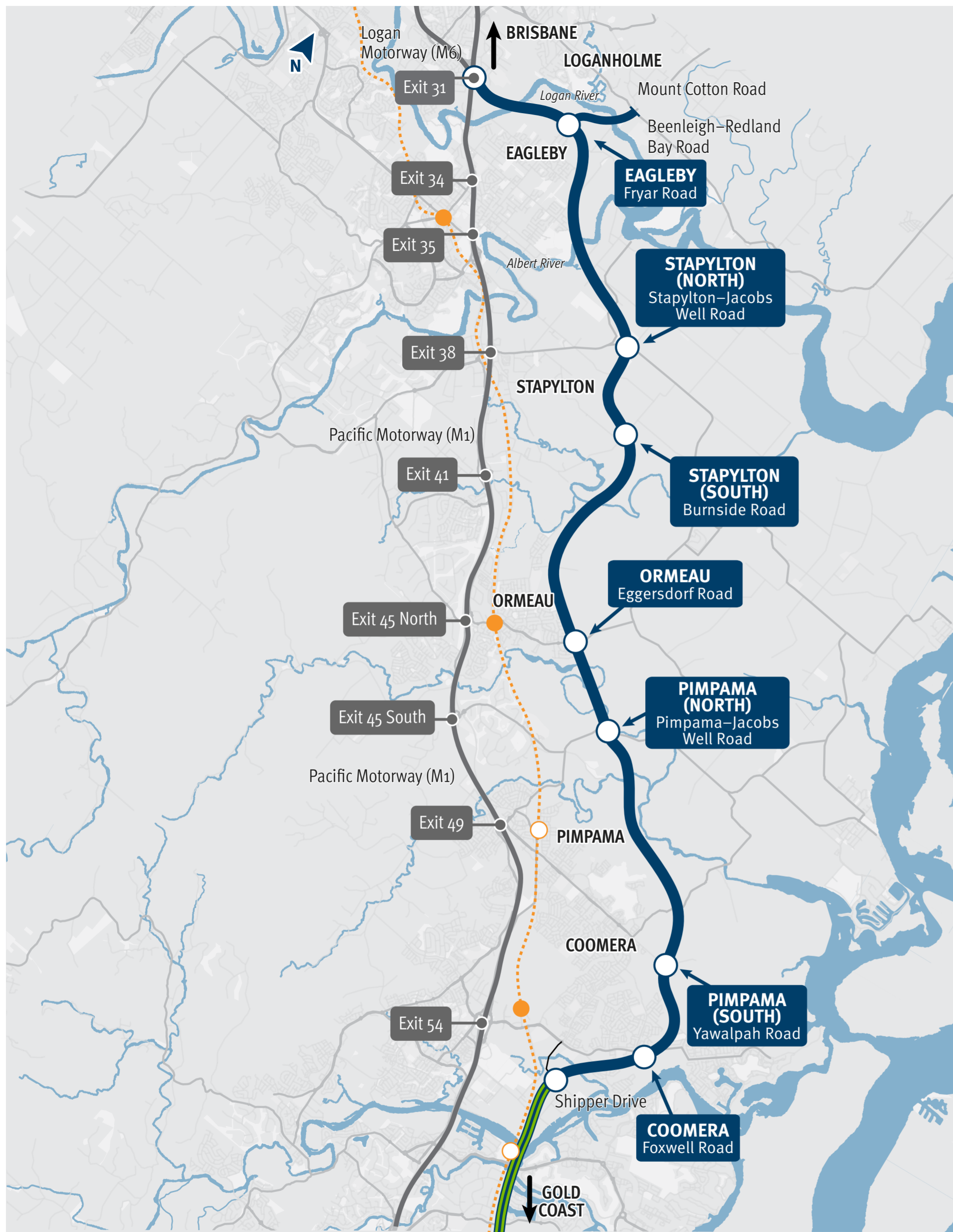
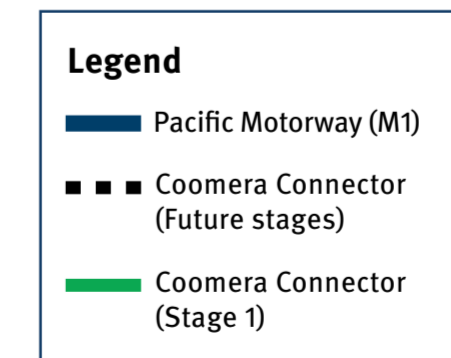
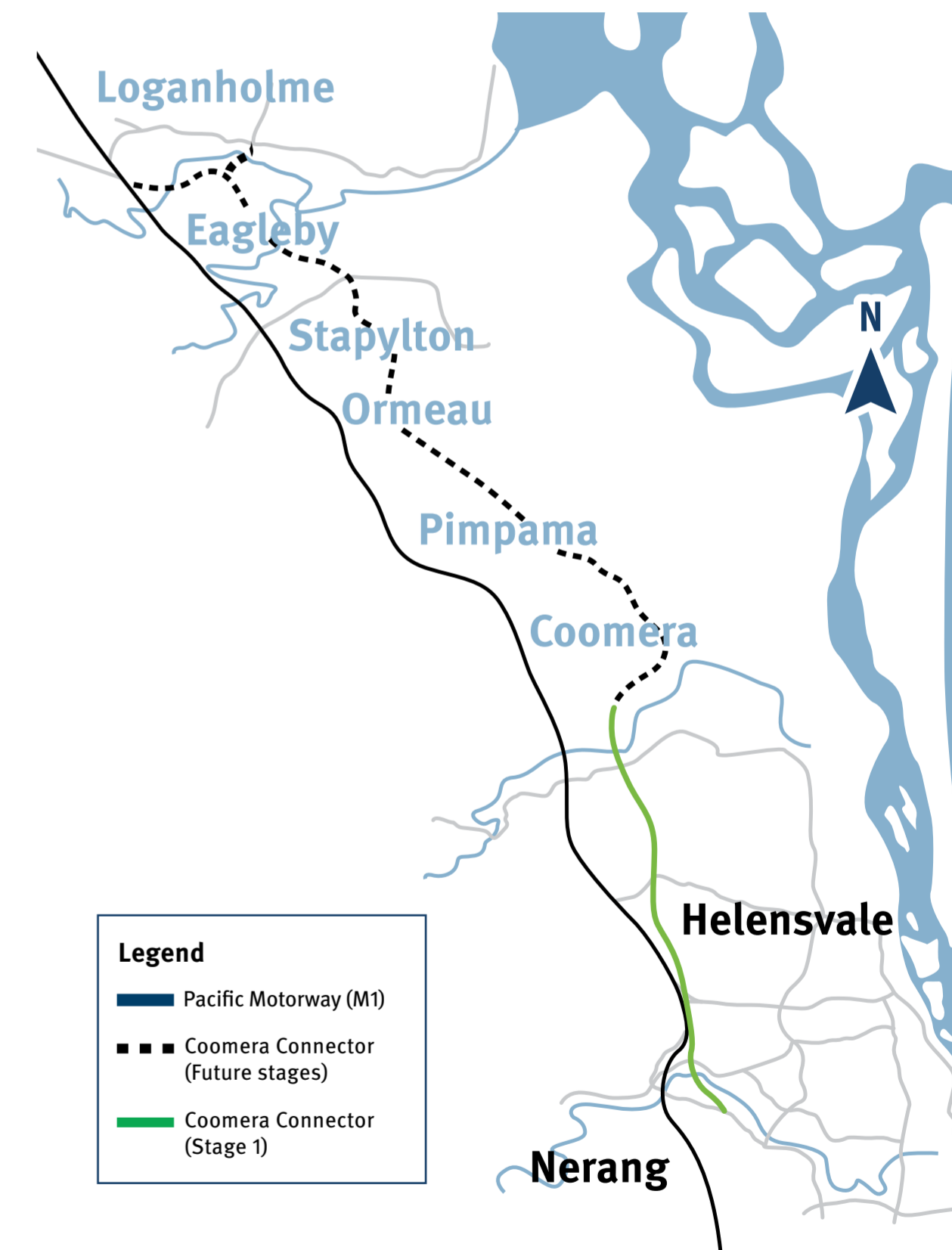
# Coomera Connector (Future stages) Loganholme to Coomera

The Coomera Connector will reduce congestion and improve the reliability of the M1.

Once complete, the 45-kilometre Coomera Connector will be a new north-south motorway between Logan and the Gold Coast, which will relieve congestion on the M1 by providing an alternative route for local trips.

Stage 1 of the Coomera Connector – the 16-kilometre section between Coomera and Nerang – was identified as the priority section, and construction began in March 2023.

The Australian and Queensland governments are now progressing planning for the future stages of the new motorway – the remaining 29-kilometres between Loganholme and Coomera.

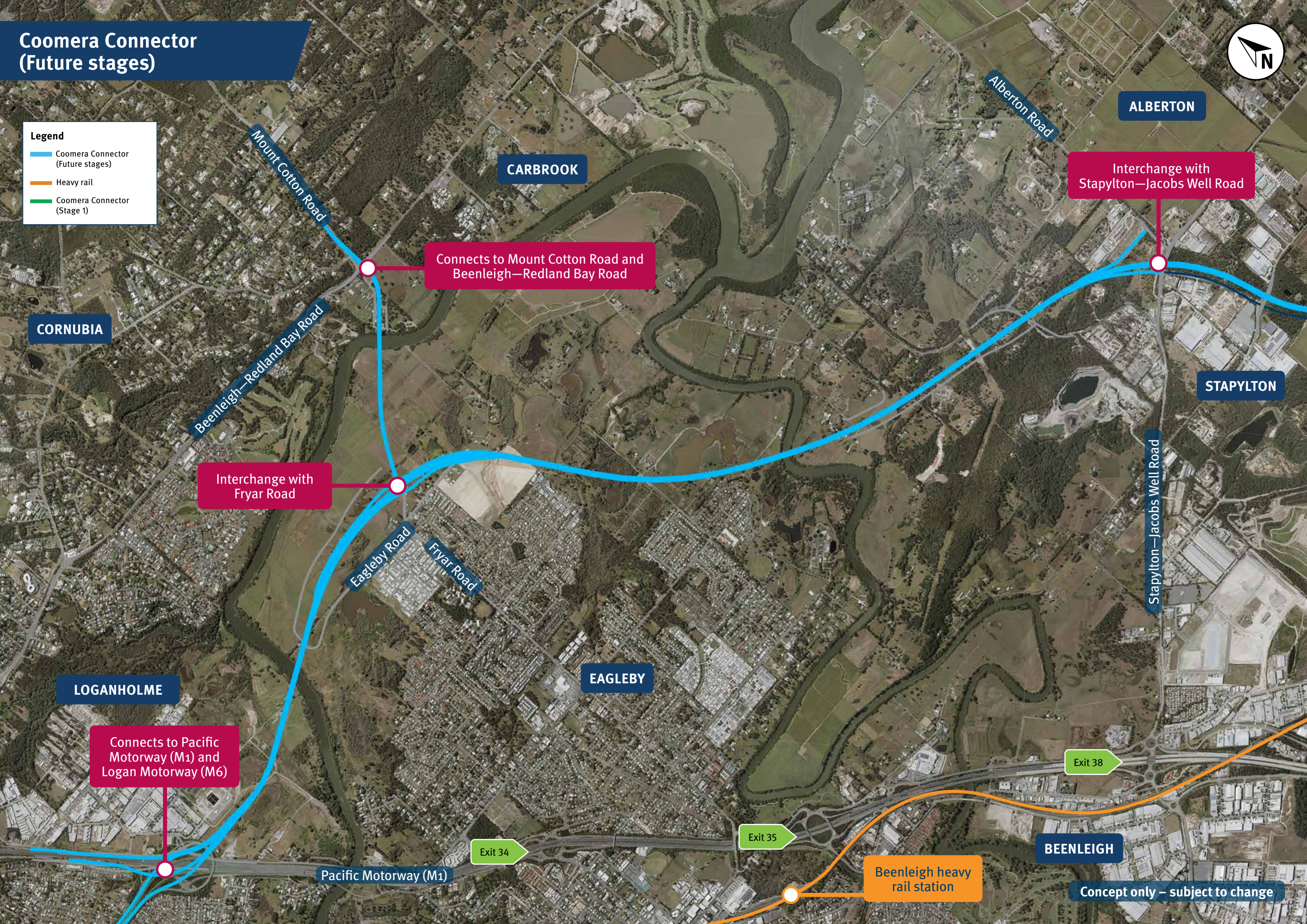


# Coomera Connector (Future stages)



**Legend**

- Coomera Connector (Future stages)
- Heavy rail
- Coomera Connector (Stage 1)



CORNUBIA

CARBROOK

ALBERTON

LOGANHOLME

EAGLEBY

STAPYLTON

BEENLEIGH

Interchange with Stapylton—Jacobs Well Road

Connects to Mount Cotton Road and Beenleigh—Redland Bay Road

Interchange with Fryar Road

Connects to Pacific Motorway (M1) and Logan Motorway (M6)

Beenleigh heavy rail station

Concept only – subject to change



GILBERTON

Interchange with  
Burnside Road

Interchange with  
Pimpama—Jacobs Well Road

Interchange with  
Eggersdorf Road

Service road

Rossmanns Road

Burnside Road

Pimpama—Jacobs  
Well Road

Ormeau heavy  
rail station

ORMEAU

Eggersdorf Road

Mirambeena Drive

Pacific Motorway (M1)

Exit 41

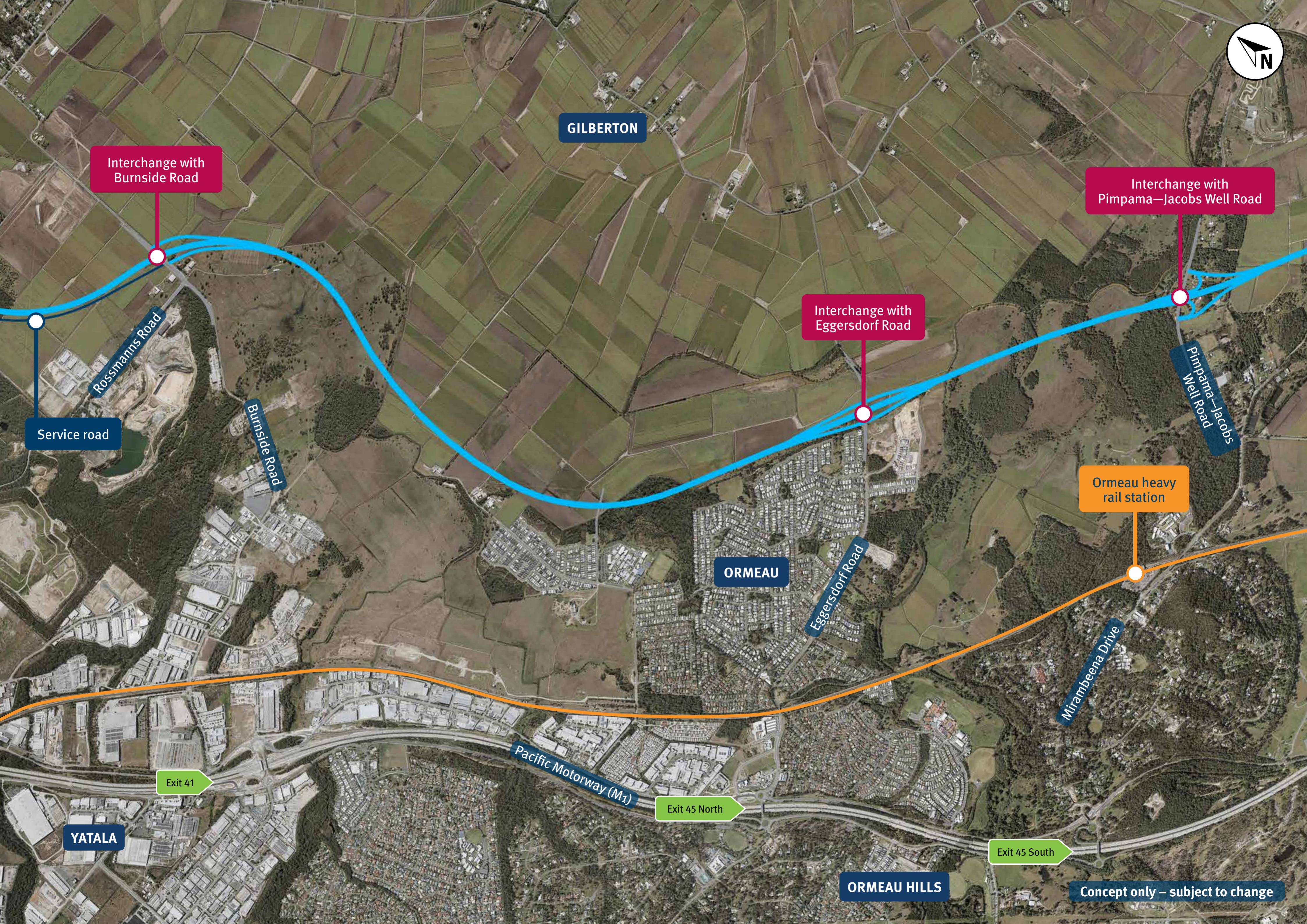
Exit 45 North

Exit 45 South

YATALA

ORMEAU HILLS

Concept only – subject to change





NORWELL

Kerkin Road North

Interchange with Yawalpah Road

Amity Road

Interchange with Foxwell Road

Foxwell Road

Oaky Creek Road

PIMPAMA

COOMERA

Future Pimpama heavy rail station

Yawalpah Road

Shipper Drive

Connects to Coomera Connector Stage 1 at Shipper Drive

Coomera heavy rail station

Westfield Coomera

Pacific Motorway (M1)

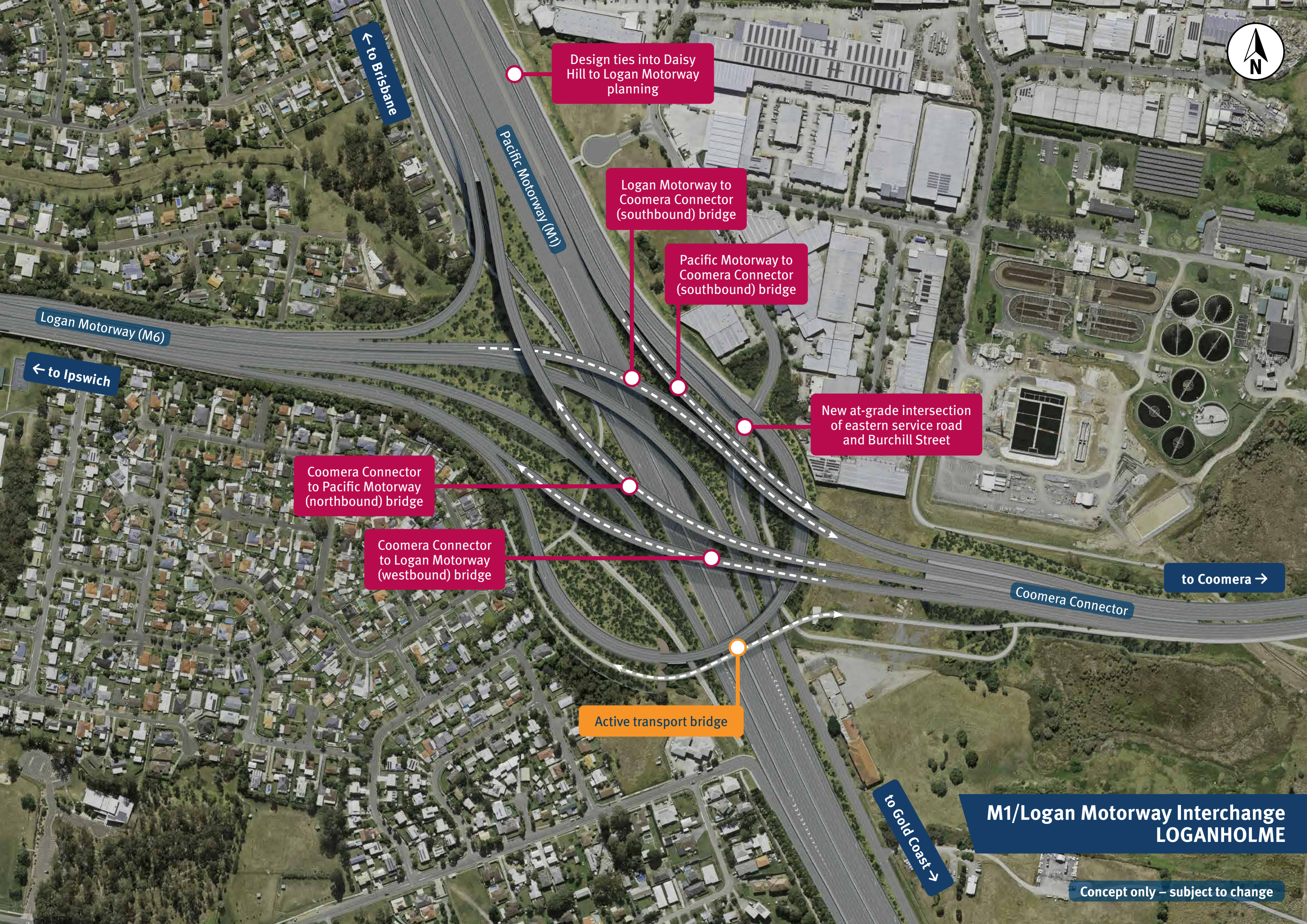
Dreamworld

Exit 49

Exit 54

UPPER COOMERA

Concept only – subject to change



Design ties into Daisy Hill to Logan Motorway planning

Logan Motorway to Coomera Connector (southbound) bridge

Pacific Motorway to Coomera Connector (southbound) bridge

New at-grade intersection of eastern service road and Burchill Street

Coomera Connector to Pacific Motorway (northbound) bridge

Coomera Connector to Logan Motorway (westbound) bridge

Active transport bridge

to Brisbane

Logan Motorway (M6)

to Ipswich

Pacific Motorway (M1)

Coomera Connector

to Coomera

to Gold Coast

# M1/Logan Motorway Interchange LOGANHOLME

Concept only – subject to change



Southbound off-ramp

Public transport access only permitted for through movements between Mount Cotton Road and Fryar Road with dedicated bus lanes

Mount Cotton Road →

← to Loganholme

Coomera Connector

Northbound on-ramp

Southbound on-ramp

Active transport bridge

Coomera Connector bridges over Eagleby Road

to Coomera →

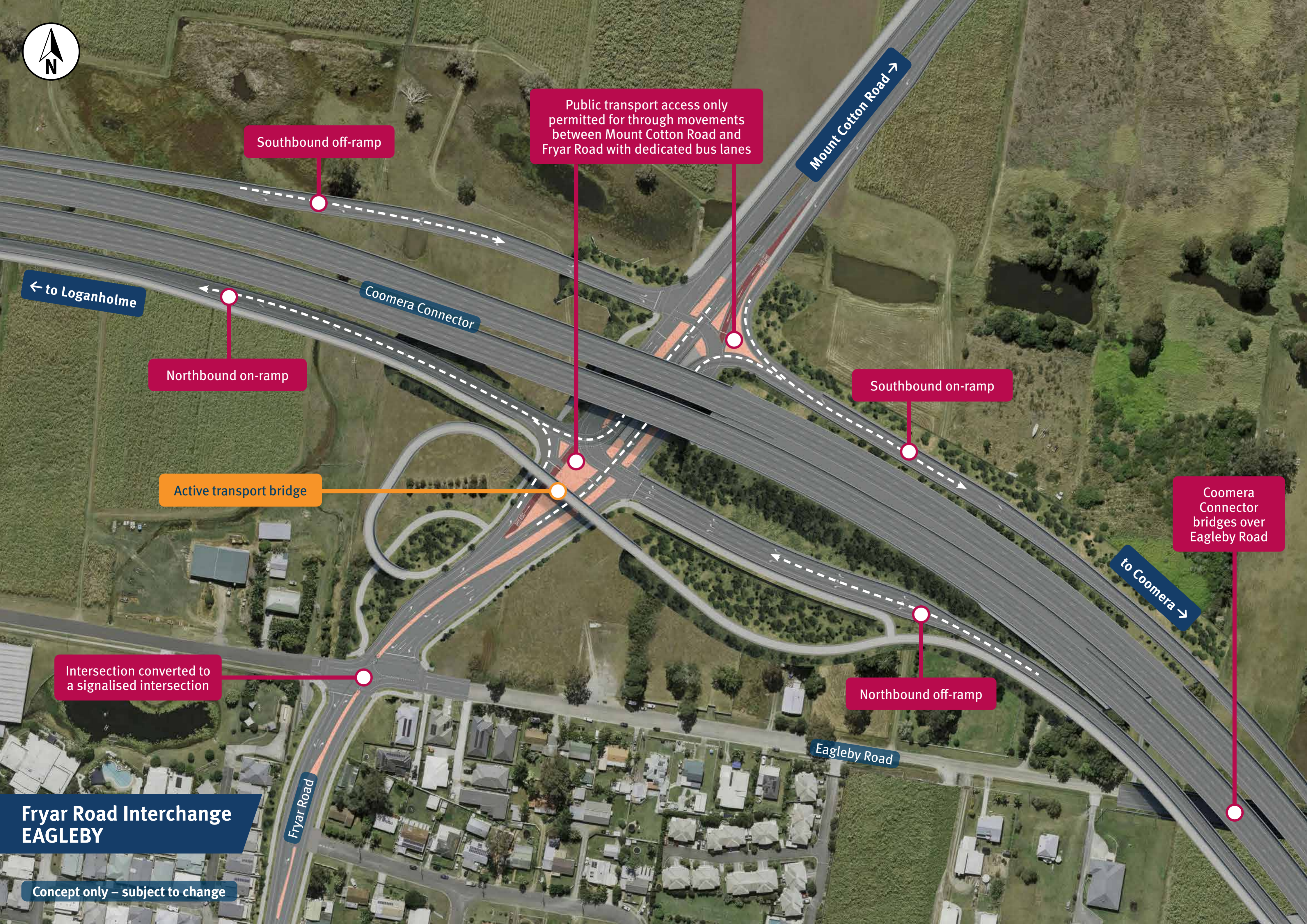
Intersection converted to a signalised intersection

Northbound off-ramp

Eagleby Road

# Fryar Road Interchange EAGLEBY

Concept only – subject to change







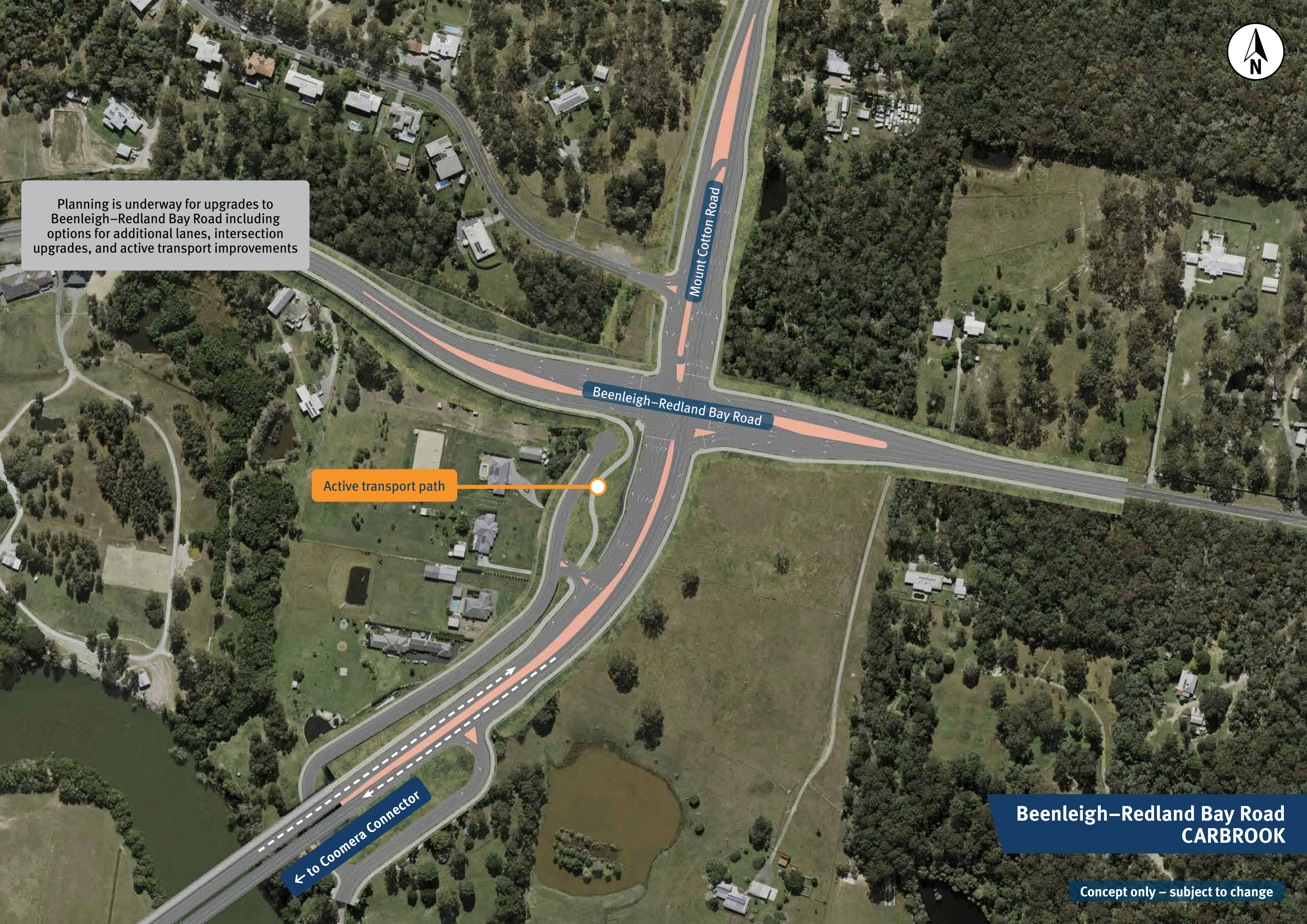
Planning is underway for upgrades to Beenleigh–Redland Bay Road including options for additional lanes, intersection upgrades, and active transport improvements

Active transport path

← to Coomera Connector

# Beenleigh–Redland Bay Road CARBROOK

Concept only – subject to change





← to Loganholme

Stapylton–Jacobs Well Road and Alberton Road intersection converted to a signalised intersection

Southbound off-ramp

Northbound on-ramp

Coomera Connector

Alberton Road

Active transport bridge

Tie in with Stapylton–Jacobs Well Road

Stapylton–Jacobs Well Road

Stapylton–Jacobs Well Road and Woolshed Road intersection converted to signalised intersection

Planning is underway for upgrades to Stapylton–Jacobs Well Road including options for additional lanes, intersection upgrades, and active transport improvements

to Coomera →

Woolshed Road

# Stapylton–Jacobs Well Road Interchange STAPYLTON (NORTH)

Concept only – subject to change



← to Loganholme

Coomera Connector

Burnside Road

Southbound on-ramp

Service road

Active transport bridge

Burnside Road and Rossmanns Road intersection converted to a signalised intersection

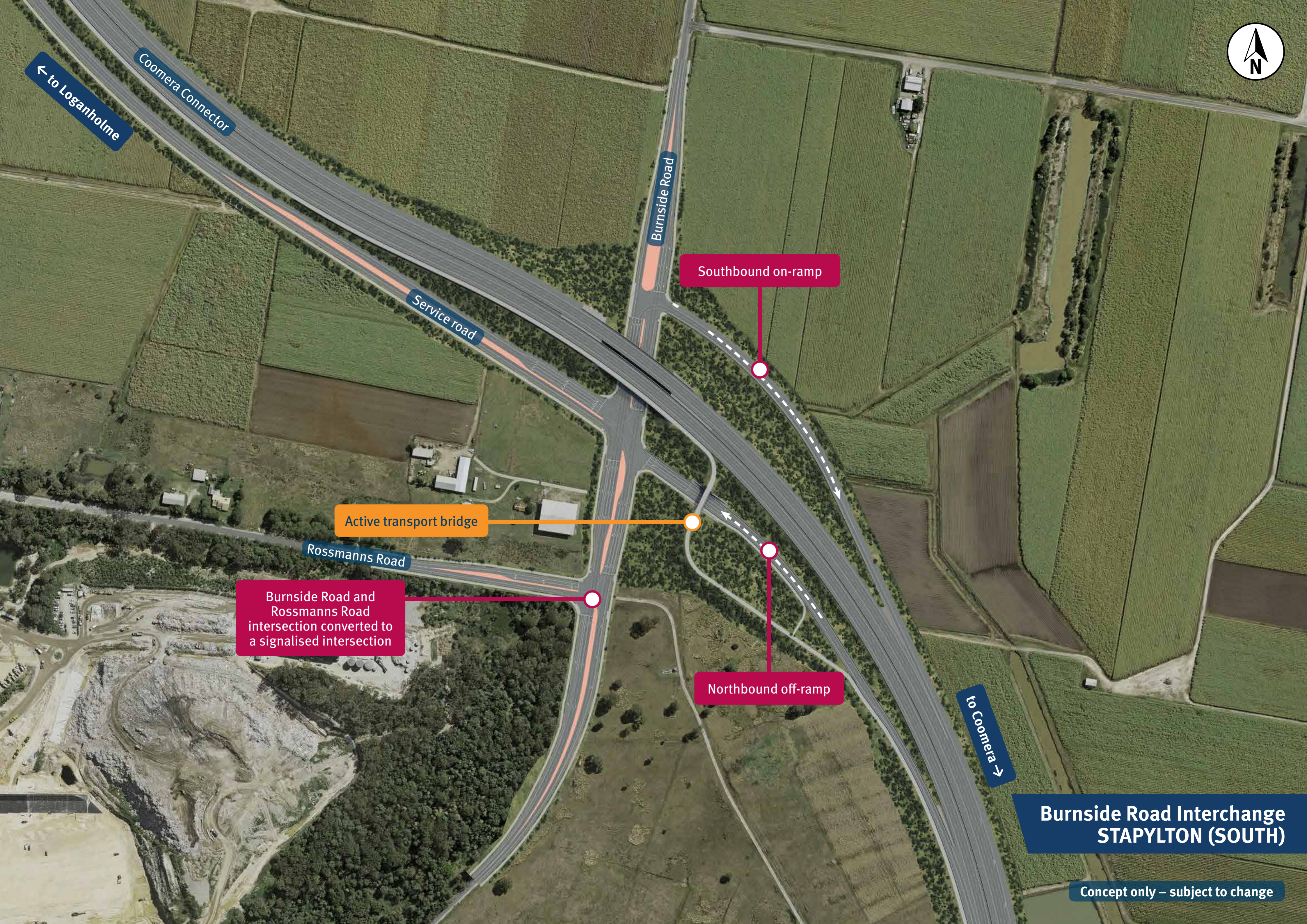
Northbound off-ramp

Rossmanns Road

to Coomera →

# Burnside Road Interchange STAPYLTON (SOUTH)

Concept only – subject to change





← to Loganholme

Southbound off-ramp

Northbound on-ramp

Active transport underpass

Ties into Eggersdorf Road

Northbound off-ramp

Southbound on-ramp

# Eggersdorf Road Interchange ORMEAU

Concept only – subject to change

Coomera Connector

Eggersdorf Road

Eggersdorf Road

to Coomera →





← to Loganholme

Pimpama–Jacobs Well Road

Coomera Connector

Pimpama–Jacobs Well Road

to Coomera →

Active transport underpass

Southbound off-ramp

Southbound on-ramp

Northbound on-ramp

Northbound off-ramp

# Pimpama–Jacobs Well Road Interchange PIMPAMA (NORTH)

Concept only – subject to change



← to Loganholme

Wallaby Way

Southbound off-ramp

Northbound on-ramp

Coomera Connector

Southbound on-ramp

Yawalpah Road

Signalised intersection to provide access to Yawalpah Road (east) and Wallaby Way

Yawalpah Road

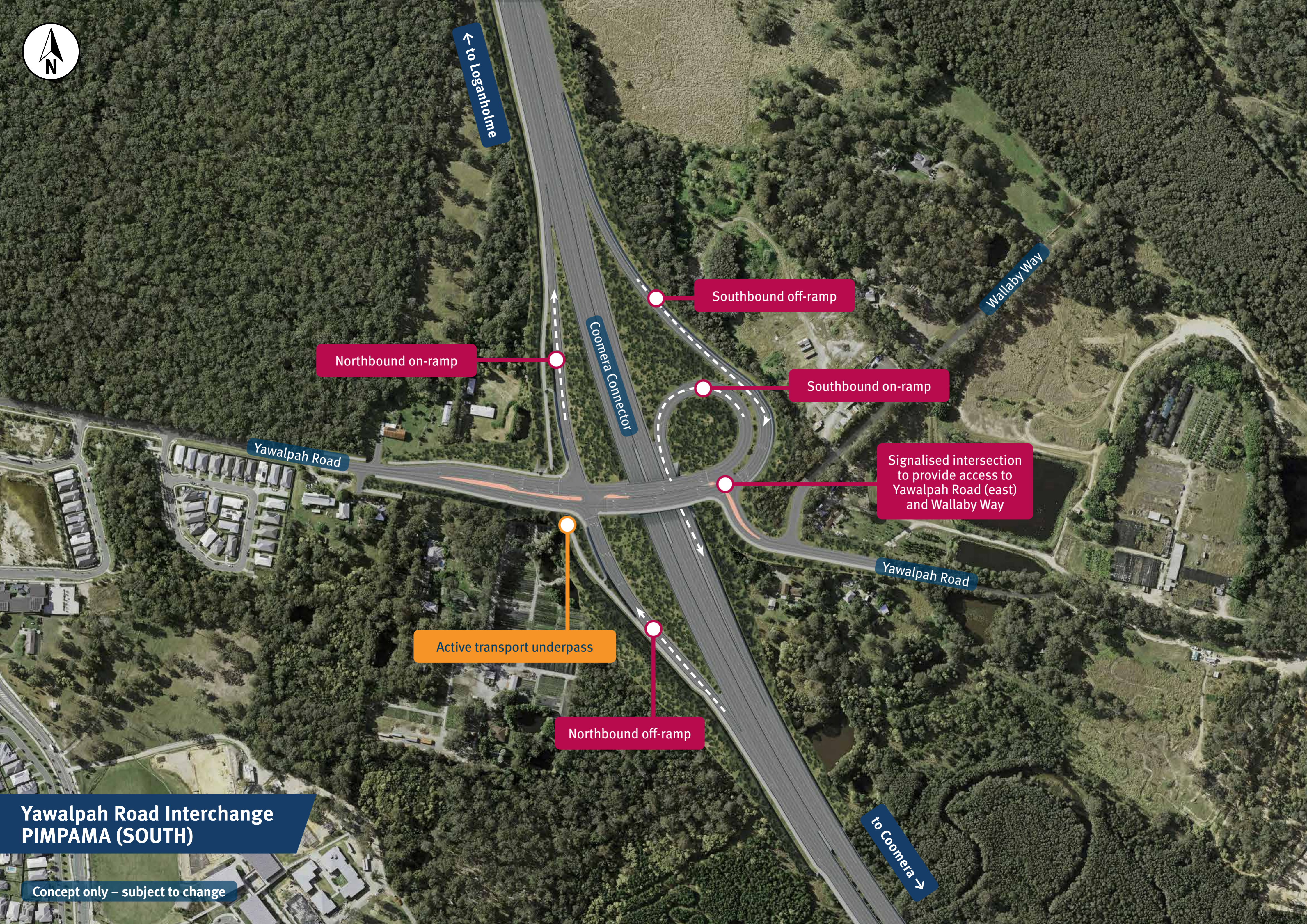
Active transport underpass

Northbound off-ramp

to Coomera →

# Yawalpah Road Interchange PIMPAMA (SOUTH)

Concept only – subject to change





Amity Road

to Loganholme →

Southbound off-ramp

Active transport underpass

Southbound on-ramp

Foxwell Road

Coomera Connector

Foxwell Road and Amity Road intersection upgrade to incorporate the Coomera Connector northbound on and off-ramps

Ties into Foxwell Road planning

Northbound off-ramp

Northbound on-ramp

# Foxwell Road Interchange COOMERA

Concept only – subject to change

**Planning is underway for improvements  
to Beenleigh–Redland Bay Road and  
Stapylton–Jacobs Well Road.**



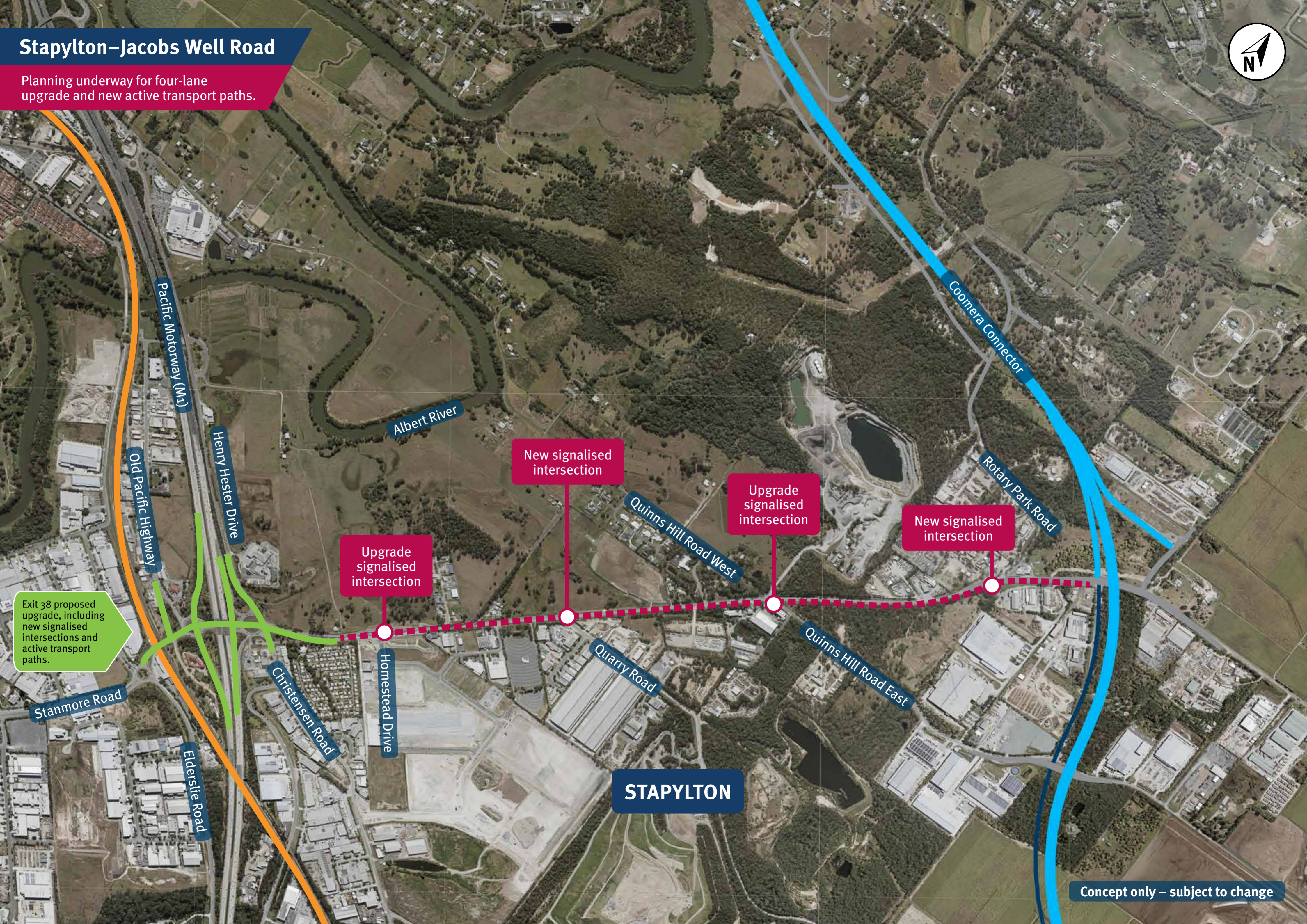




# Stapylton–Jacobs Well Road

Planning underway for four-lane upgrade and new active transport paths.

Exit 38 proposed upgrade, including new signalised intersections and active transport paths.



**STAPYLTON**

Concept only – subject to change

# Beenleigh–Redland Bay Road

Planning underway for four-lane upgrade and new active transport paths.



**CORNUBIA**

**EAGLEBY**



Upgrade  
signalised  
intersection

New signalised  
intersection

Upgrade signalised  
intersection

California Creek Road

Mount Cotton Road

Logandale Boulevard

Albatross Court

Carbrook Road

Beenleigh–Redland Bay Road

To Coomera Connector

Logan River

Concept only – subject to change

## For more information:

**Phone:** 1800 568 978 Option 4. (8.30am-4.30pm, Monday-Friday)

**Email:** [coomeraconnector@tmr.qld.gov.au](mailto:coomeraconnector@tmr.qld.gov.au)

**Web:** [www.tmr.qld.gov.au/coomeraconnector](http://www.tmr.qld.gov.au/coomeraconnector)

**Post:** Department of Transport and Main Roads  
PO Box 442, NERANG QLD 4211

*\*Check with your service provider for call cost*

**13 QGOV (13 74 68)**

[www.tmr.qld.gov.au](http://www.tmr.qld.gov.au)