

More opportunities to have your say

Further consultation is being undertaken to ensure residents who live close to the Stage 1 project corridor continue to be involved in the planning of the Coomera Connector.

Online engagement

You're invited to have your say on key project negotiables that will influence the design outcome, including:



the design of noise barriers and retaining walls



the design of the shared walking and bike path to facilitate desired local connections for the community



landscaping and planting in and around the project corridor



sharing your knowledge about local Aboriginal or European heritage values in and around the project corridor.



To find out how to have your say and share your ideas, visit the project website www.tmr.qld.gov.au/coomeraconnector

Community Reference Group

At the request of a number of key stakeholders, a Stage 1 Community Reference Group has been established to ensure community members and businesses close to the project can provide input to influence key project negotiables.

The Community Reference Group was established in August 2020 and will conclude at the end of the business case phase in mid-2021.

The group consists of:



Residential stakeholders

- Foreshore Coomera estate
- River Cove, Hope Island
- Monterey Keys, Helensvale
- The Shores, Helensvale
- The Surrounds, Helensvale
- Arundel Springs estate
- Arundel and Parkwood
- Molendinar
- Nerang River precinct
- Carrara



Business stakeholders

- Gold Coast City Marina & Shipyard
- Gold Coast Suns
- Metricon Stadium

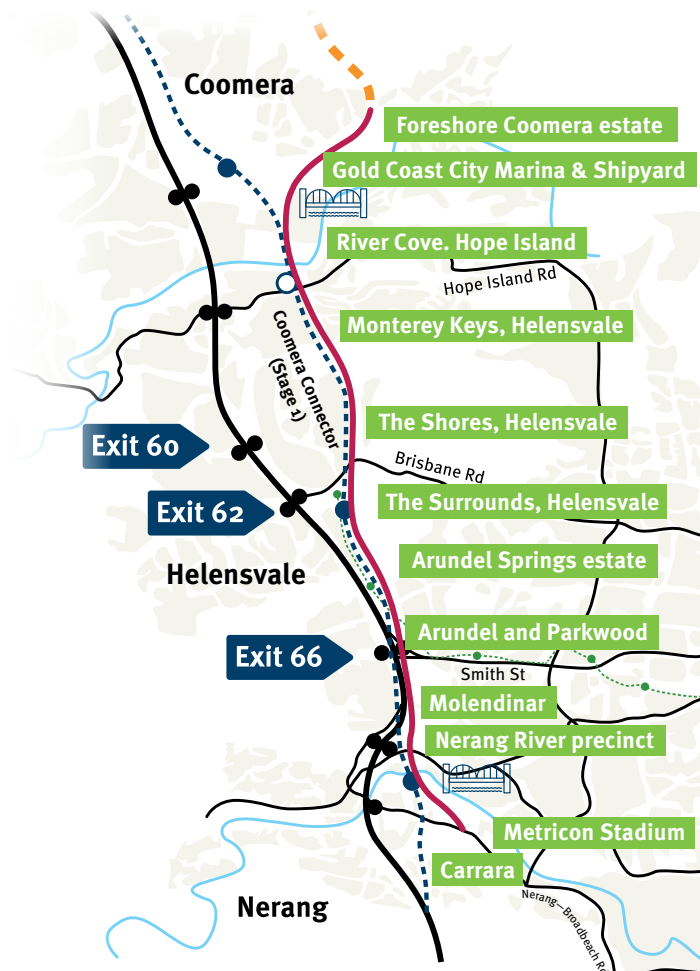


Environmental stakeholders

- Coomera Conservation Group
- Gecko Environment Council



To find out more about the Community Reference Group, visit the project website www.tmr.qld.gov.au/coomeraconnector



Legend

- Urban footprint
- Pacific Motorway (M1)
- Coomera Connector Stage 1
- Coomera Connector Future stages
- Light rail
- Heavy rail
- Heavy rail station
- Heavy rail future infill station

Protecting our environment

The Coomera Connector will deliver best practice environmental outcomes.

Environmental approvals for the project are required through the Department of Agriculture, Water and the Environment's assessment of the Stage 1 project under the *Environment Protection and Biodiversity Conservation Act 1999*.

Environmental conditions will need to be satisfied to protect Matters of National Environmental Significance located in and around the corridor including the RAMSAR wetlands at Coombabah and local koala populations at Coomera, Helensvale and Parkwood.

Stage 1 timeline

Jointly funded by the Australian and Queensland Governments, a business case is currently being developed for consideration by government in mid-2021.

A funding commitment is required for the Stage 1 project to proceed to detailed design and construction.

Loganholme to Coomera

With the southern section of the Coomera Connector between Coomera and Nerang being identified as the stage that needs to be built first, the Loganholme to Coomera section will be considered as future stages.

Based on community feedback, the Department of Transport and Main Roads is undertaking an assessment of six alternative alignments for the Coomera Connector in the vicinity of Eagleby.

The assessment is considering the merits of each alternative put forward by the community based on traffic modelling outcomes, social impact (including property resumptions), environmental impact and cost.

Timeframes have not yet been established for progressing planning of the future stages.

Contact us

If you would like further information about the Coomera Connector, please contact the project team to register for updates.

Ph: 07 5563 6600
(select option 3)
8.30am – 4.30pm, Monday–Friday
Email: coomeraconnector@tmr.qld.gov.au
Website: www.tmr.qld.gov.au/coomeraconnector



13 QGOV (13 74 68)
www.tmr.qld.gov.au | www.qld.gov.au

Get involved and have your say

We'd like to hear your views on what's most important to you.

You're invited to participate in our community consultation program. Find out the latest information about planning for Stage 1 of the Coomera Connector and share your views and ideas with us.



Provide your feedback online

Visit the interactive community consultation website to find out more about the project and provide your feedback.



Scan the QR Code with your smart phone to be taken to the website

Visit: www.tmr.qld.gov.au/coomeraconnector



Talk to the project team

The Coomera Connector project team is available to talk to community members and answer questions about the project.

Contact us by email or phone.



Department of Transport and Main Roads

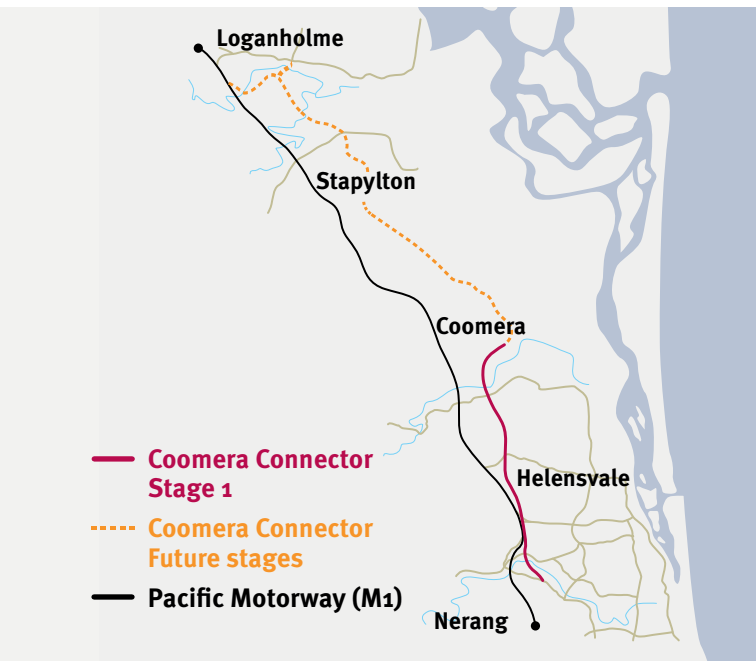
September 2020

Coomera Connector

Have your say

The Pacific Motorway (M1) is Queensland's busiest road and ensuring its optimal performance is a priority for the Queensland Government.

Planning ahead for future growth, the Coomera Connector will provide an alternative transport corridor that will meet the needs of the growing northern Gold Coast area.



Benefits of Stage 1 of the Coomera Connector

When constructed, Stage 1 of the Coomera Connector is expected to improve transport outcomes in the northern Gold Coast area and reduce trips on the M1 by providing:

- an alternative north–south route between Coomera and Nerang
- additional crossings of the Coomera and Nerang rivers
- improved safety on the M1, reducing congestion by encouraging up to 60,000 vehicles per day to use the Coomera Connector for local trips
- more reliable travel times between Brisbane and the Gold Coast.

Business case to be completed in mid-2021

Taking community feedback into consideration, the Department of Transport and Main Roads is developing a reference design and Building Queensland is leading development of a business case for Stage 1 of the project between Coomera and Nerang.

You're invited to have your say about what's most important to you.

Community consultation was undertaken in late-2019 for the entire Coomera Connector project.

Key outcomes included:

- 98 per cent of survey respondents thought traffic and congestion will get worse in the future.
- 80 per cent supported the Coomera Connector being built as soon as possible.
- Those who live close to the corridor had key concerns including noise, urban design and impacts on wildlife and the environment.
- Alternative alignments put forward by the community in the vicinity of Eagleby continue to be investigated as part of the future stages.

What will the Coomera Connector look like?



Active transport – walking and bike riding

A shared path for walking and bike riding will be included along the full length of Stage 1 of the Coomera Connector.

The path will provide a safe and connected walking and bike riding network for the northern Gold Coast area, increasing the opportunity for local communities to access new options for healthy and enjoyable outdoor exercise.

Public transport

The Coomera Connector will improve public transport by enabling new bus routes to be created using the Coomera Connector.

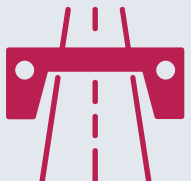
Bus priority measures on the Coomera Connector will improve reliability of bus services, contributing to greater use of public transport and user satisfaction.



Coomera Connector Stage 1: Coomera to Nerang



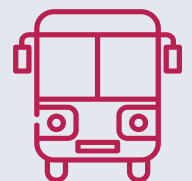
The Coomera Connector will be a high-speed motorway style road



Grade-separated interchanges will minimise impacts on existing traffic network



A shared path for walking and bike riding will improve opportunities for active transport



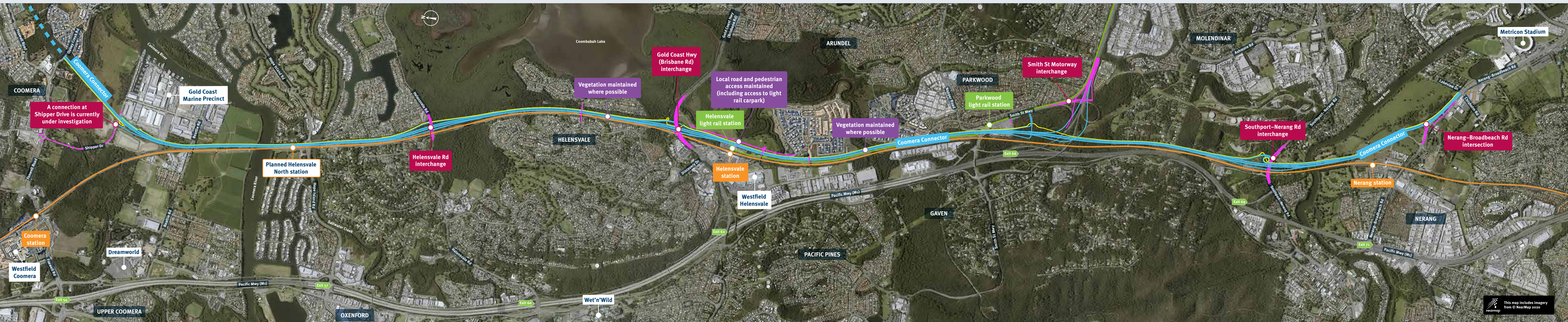
Bus priority measures and new bus routes will improve public transport outcomes



Noise barriers will form part of the design to minimise impact of road traffic noise



Wildlife sensitive design and exclusion fencing will allow safe wildlife movement



Legend

- Coomera Connector
- Shared path
- Supporting road network upgrades
- Under investigation
- Light rail
- Heavy rail

Connecting to Coomera

Investigations are continuing to determine where the northern end point will be for Stage 1 of the Coomera Connector.

An interchange at Shipper Drive is currently under investigation as an alternative to Oakey Creek Road. An interchange at Shipper Drive would facilitate access to the Gold Coast Marine Precinct and commercial precinct near Beattie Road.

Access to Coomera would be via Shipper Drive to Foxwell Road including an upgraded intersection at Foxwell Road.

Hope Island Road investigations

The Coomera River area is highly constrained with the rail corridor and planned Helensvale North station to the west of the Coomera Connector corridor and residential properties to the east.

Investigations have concluded that it is not feasible to provide a connection to Hope Island Road due to the significant number of residential properties and businesses that would need to be acquired.

Access to the Coomera Connector for Hope Island, Sanctuary Cove and Paradise Point will be provided via the interchange at Helensvale Road.

Helensvale Road interchange

The Coomera Connector will be elevated over Helensvale Road, minimising impacts to traffic flows on Helensvale Road.



Gold Coast Highway interchange

At Helensvale the Coomera Connector will run under the Gold Coast Highway, minimising impacts to traffic flows on the Gold Coast Highway.



Smith Street Motorway interchange

At Parkwood the Coomera Connector will be elevated over the light rail park'n'ride facility, Smith Street Motorway and the light rail.



Southport-Nerang Road interchange

The Coomera Connector will be elevated over Southport-Nerang Road minimising impacts to traffic flows on Southport-Nerang Road.



Nerang-Broadbeach Road intersection

The Coomera Connector will start on Nerang-Broadbeach Road just west of Mettricon Stadium providing an additional crossing over the Nerang River. Access to local businesses will be maintained.

