



# Direct Sunshine Coast Rail Line

## Aroona station

Aroona has a small shopping centre, low and medium-density residential buildings, schools, retirement facilities and other community facilities. Aroona station is proposed to support the local community and nearby schools. Currimundi and Dicky Beach are the closest to Aroona station and can be accessed via transfer at the station to other public transport.

Aroona station is proposed to be elevated over Parklands Boulevard with the primary entrance on the north and a secondary entrance on the south of Parklands Boulevard. Each side of the road is proposed to have lift access. The northern access also includes escalators as the park 'n' ride is proposed to be located on the north of Parklands Boulevard. The platform above acts as a pedestrian bridge over the boulevard.

The following features are proposed for Aroona station:

- Accessible station with two tracks and an island platform (platform positioned between the two tracks). These platforms will be future-proofed to accommodate 9-car trains.
- As this station is an elevated station, the vertical transport between the ground and platform levels has been designed to include escalators, stairs and lifts.
- Aroona station is proposed to be located over Parklands Boulevard, connecting to bus bays, kiss 'n' ride and park 'n' ride facilities, all located adjacent to the existing shopping centre.
- The existing bus stops on Parklands Boulevard are proposed to be upgraded.
- The park 'n' ride is proposed to be located under the elevated rail corridor (behind the tavern). This elevated rail structure will provide cover to the vehicles and reduces additional land requirements around the station.
- New active transport access is provided to the station via Parklands Boulevard to the east, and via the existing network surrounding the existing shopping centre. A new north/south active transport facility is also proposed to run from Parklands Boulevard to the north, parallel with Holmes Street and Snowdrop Avenue.
- Station facilities including ticket office, public toilets, end-of-trip facilities (cycle and scooter storage), CCTV and lighting.



TMR undertook consultation on the Direct Sunshine Coast Rail Line stations in mid-2023. The community was encouraged to provide feedback on the alignment, stations and active transport.

### What you told us about Aroona station

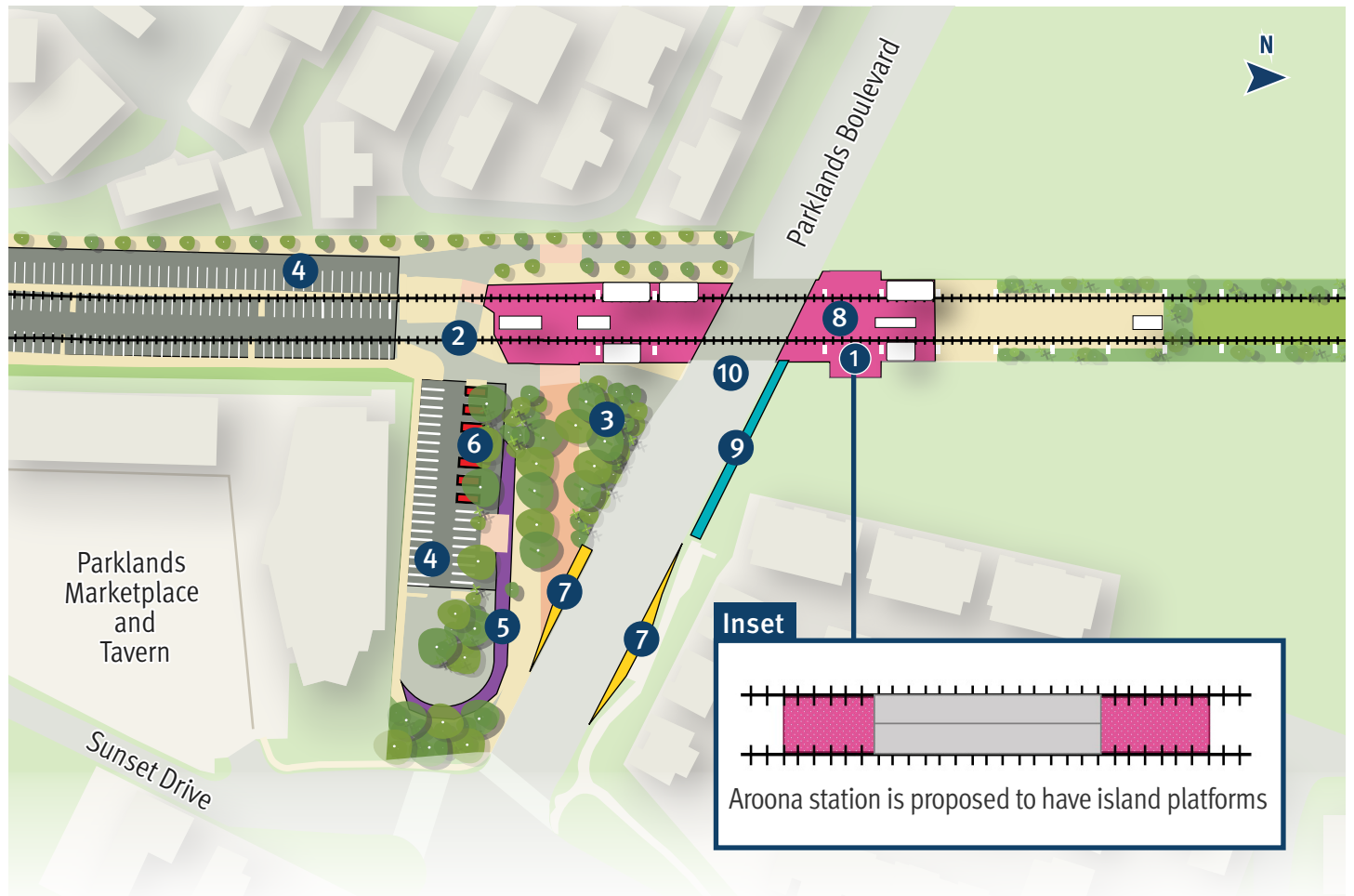
- Park ‘n’ ride needed
- Accessible design for disability access
- Importance of a connection to Sunshine Coast University Hospital
- Good active transport connections are essential

### How this is considered in the business case design

- A park ‘n’ ride facility is proposed to be located beneath the elevated rail corridor, behind Parklands Tavern with access off Parklands Boulevard. The number of park ‘n’ ride spaces required at this site will be determined by transport modelling, which is underway.
- All new and upgraded stations will be accessible for all customers.
- Connecting bus services are a key consideration of planning for the rail project, with modelling and service planning underway. Bus services between Aroona station and the Sunshine Coast University Hospital will be considered, noting that Birtinya station is proposed to be closer to the Sunshine Coast University Hospital and may provide easier access for customers.
- Active transport connections are being planned along the full 37km corridor to ensure people can walk and ride to stations and to other destinations. Active transport at Aroona station includes provision for new and upgraded facilities.
- The business case design for stations includes concept designs for platform configuration and the station building. Detailed design, including more specific details about station facilities, will be undertaken in future phases of the project. Community feedback received during the business case phase will be considered in detailed design.

- Rail is proposed to be in a tunnel below Little Mountain with the tunnel entrance/exit south of the proposed Aroona station.
- There are opportunities for public artwork, landscaping and recreational areas under the rail corridor. This will be investigated as the design progresses.

## Aroona station map (updated concept layout)



### Legend

- ① Station platforms (elevated station, island platforms) – see inset
- ② Dual track
- ③ Landscaping
- ④ Park 'n' ride (street level)
- ⑤ Kiss 'n' ride
- ⑥ Disability parking bays and station staff parking
- ⑦ Bus bays
- ⑧ Cycle storage
- ⑨ Pedestrian and bicycle connection between station and existing bus stops
- ⑩ Road widening to allow for turn lanes to station from Parklands Boulevard.

All elevated (2 storey) stations to include lifts and stairs.

# Aroona station access and features

## Getting to and from stations

In addition to connections with the Sunshine Coast Public Transport project, the Direct Sunshine Coast Rail Line project includes upgrades to the bus network to ensure communities along the route have efficient connections to stations.

In line with the Southern Sunshine Coast Public Transport Strategy, we're planning to introduce new routes between stations, key destinations, and surrounding areas. This will improve travel right across the region.



Scan the QR code to view all DSC Rail Line station concept layouts and a map of proposed corridor refinements.



### Accessibility

All stations will be accessible to everyone in our community.



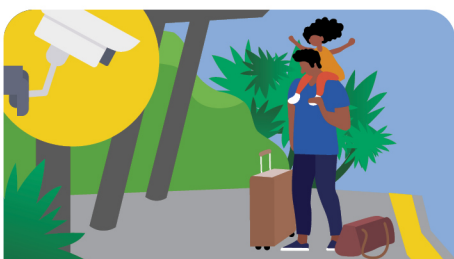
### Active transport

To support active transport options, stations will feature facilities and infrastructure to accommodate bikes and other micro-mobility devices.



### Passenger comfort

Seating, shelters and nearby water refill points will ensure comfortable journey experiences, with toilets provided at major interchange stations.



### Safety

In accordance with Crime Prevention Through Environmental Design (CPTED) principles, stations will include CCTV cameras, lighting and help points.



### Ticketing and information

Customer information will be provided via display screens, timetables and hearing loops, with ticketing facilities also included.

### Contact us

-  1800 407 533 (8.30am to 4.30pm)
-  [scpublictransport@tmr.qld.gov.au](mailto:scpublictransport@tmr.qld.gov.au)
-  Sunshine Coast Public Transport  
Department of Transport and Main Roads  
PO Box 1600  
Maroochydore QLD 4558