



Queensland
Government



Queensland Train Manufacturing Program

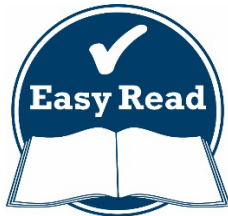
What you need to know

An Easy Read fact sheet





The Queensland Government Department of Transport and Main Roads (TMR) wrote this fact sheet. When you see the word 'we', it means TMR.



We wrote this fact sheet in an easy to read way.

We use pictures to explain some ideas.

Bold
Not bold

We have written some words in **bold**.

This means the letters are thicker and darker.

We explain what these words mean.



This Easy Read fact sheet is a summary of another fact sheet. This means it only includes the most important ideas.



You can find the other fact sheet on our website.

www.tmr.qld.gov.au/trainmanufacturing



You can ask for help to read this fact sheet.

A friend, family member or support person may be able to help you.

About the Queensland Train Manufacturing Program



The Queensland Train Manufacturing Program is a project to help us make more trains.

In this fact sheet we call it our project.



Our project will help us meet the needs of people who use our trains in South East Queensland.



It will cost \$7.1 billion.



As part of our project, we will make 65 more trains.



Each of these trains will have 6 cars.

A car is a section of a train that carries people.



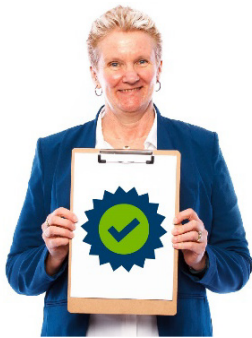
Another part of our project is to build a site in Torbanlea.

Torbanlea is in the Maryborough area.

We can use this site to:



- make our 65 new trains



- make sure they work well.

Our project will help workers:



- have jobs that last a long time



- grow their skills.



Our project will make our train services more **accessible**.



When something is accessible, everyone can use it.

This includes people with disability.



Our project will help us have more trains running in the future.



When we have more trains running, it can help more people take the train instead of driving.



It can also help protect our natural environment.



Some of the trains will be ready from 2025.

Questions people have about our project

Why does Queensland need a new site to make trains?

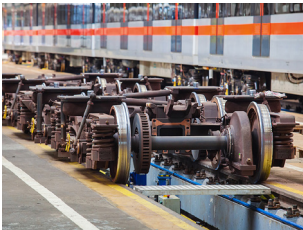


There are no sites in Queensland that make trains with 6 cars.



Downer Rail is a company that makes trains.

They own a site in Maryborough.

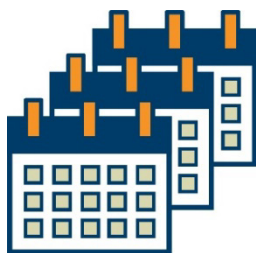


But there is lots of work to do there.

So we will make a new site to build trains:

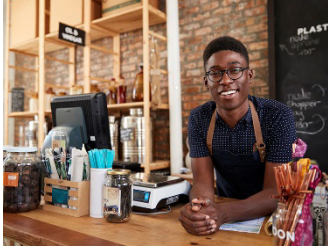


- now



- in the future.

Why did we choose Torbanlea?



We want to build a site in Maryborough that can support local businesses.



We checked parts of the Maryborough area.

But we chose Torbanlea because it's close to the:



- Bruce Highway



- train lines we have now.

How do we get the land for sites to make trains?



There is a law that lets us buy the land we need to do our work.

For more information about this law, you can:

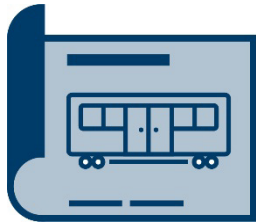


- go to our website
www.tmr.qld.gov.au



- search for 'Land and property resumptions'.

Who will run the project?



We asked organisations that make trains if they want to run the project.



We chose 3 organisations to apply for the chance to run the project:

- Alstom
- CAF
- Downer Rail.



We will choose who will be best to run the project later in 2022.



We will share this information with the community.

The organisation who runs the project will make:



- 65 new trains

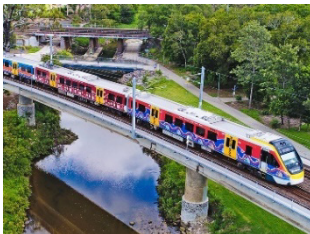


- a site to make the trains in Torbanlea



- a site to fix the trains on the Gold Coast.

We will own these:



- trains



- sites.



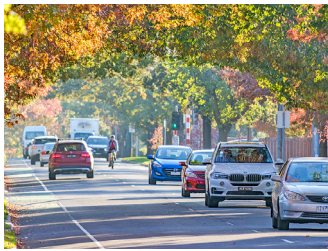
We will run them after the project finishes.



What will happen next?



We will start work in Torbanlea to help us get ready for the project.



We will check where we want to do our work.
This includes making sure there are roads to get to the new site.

Our work will:



- start in April 2022



- take about 6 months to finish.



There will be some road works.
There might be more traffic while we do them.

What will the site look like?



The site where we will make the trains will have lots of sheds with 3 to 4 levels.



The sheds will be connected by roads.



There might be a space to test the new trains at low speeds.



There might also be spaces for workers to live.



Each organisation has a different idea for how the site will work.



So we need to pick an organisation to work with before we know what the site will look like.

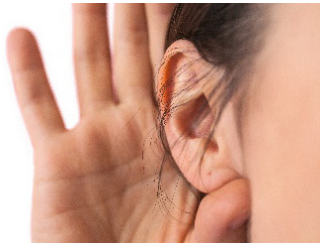
How will the project affect people who drive on the Bruce Highway?



There might be more traffic on the:

- Bruce Highway
- roads close to where we are building.

There might be some:



- noise



- dust.



We will tell the community what might happen when we start work on the project.

How will the project affect the natural environment?



Before we start building, we will check the natural environment.

We will make sure we can:



- build a site for making trains



- protect our natural environment.



The organisation we choose for the project must think about how they will protect our natural environment.



If we need to clear the land to build our new site,
we must also plant:

- trees that koalas eat leaves from
- **native plants.**



Native plants:

- come from our part of Australia
- have always grown here.



We will keep all plants that are within 20 metres of
any water, such as rivers.

How will we help our natural environment regrow?



We will only clear the land we need for building.



There might be some parts of the land that we can help regrow.



We can plant new native plants that will help our natural environment.



This will help us make sure it does not affect the natural environment.

Contact us



You can call us.

1800 271 176



You can send us an email.

qtmp@tmr.qld.gov.au



You can write to us.

Queensland Train Manufacturing Program

GPO Box 1549

Brisbane 4001



You can visit our website.

www.tmr.qld.gov.au/trainmanufacturing



The Information Access Group created this Easy Read document using stock photography and custom images. The images may not be reused without permission. For any enquiries about the images, please visit www.informationaccessgroup.com. Quote job number 4695.