

Queensland Train Manufacturing Program

The Department of Transport and Main Roads' Queensland Train Manufacturing Program (QTMP) involves the design and delivery of 65 new six-car passenger trains at a purpose-built manufacturing facility at Torbanlea, near Maryborough. Trains will be maintained and stabled at a rail facility in Ormeau, on the Gold Coast.

The QTMP will support South East Queensland's population and economic growth, as well as Cross River Rail and the Brisbane 2032 Olympic and Paralympic Games.

Construction of the facilities, trains, and maintenance of the fleet will support Queensland jobs now and into the future. The program brings with it a pipeline of training and development opportunities to bolster Queensland's train manufacturing industry.

In June 2023, the Queensland Government awarded Downer the Design Build and Maintain (DBM) Contract for the QTMP.

Train manufacturing at Torbanlea

The train manufacturing facility will be located at Torbanlea. The QTMP fleet of 65 state-of-the-art passenger trains will be manufactured at the purpose-built facility.

Rail facility in Ormeau

A rail facility for train maintenance and stabling will be constructed on a 66-hectare site in Ormeau.

Community shaping the project

Working with local communities and stakeholder groups is an important part of planning and delivering the project. There will be opportunities for the community to provide feedback on elements of the facilities when designs are made available later this year. We are working with people with diverse accessibility requirements to co-design the new trains to ensure they are compliant, functional and accessible for all passengers.

The QTMP will deliver:



A fleet of 65 six-car passenger trains



A purpose-built manufacturing facility near Maryborough



A rail facility (for train maintenance and stabling) in Ormeau



A future-proofed rail network



Jobs for Queenslanders during construction and operation



QTMP facility locations

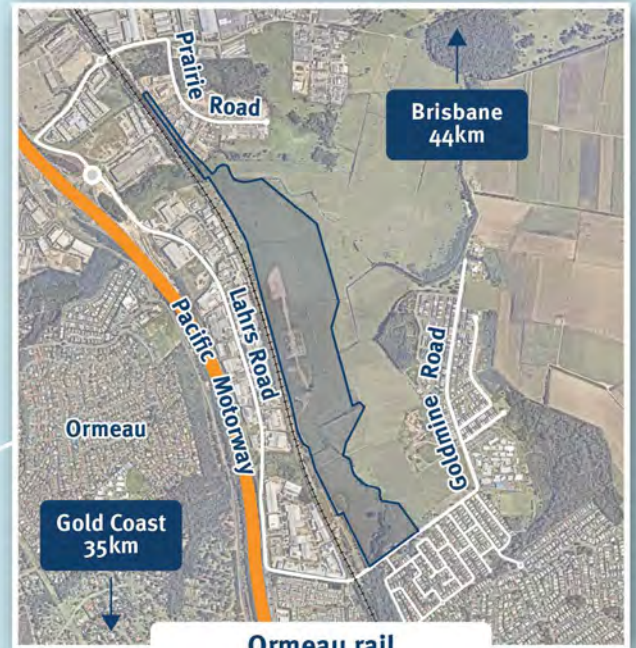
LEGEND



Site footprint



Torbanlea manufacturing facility site



Ormeau rail facility site

Queensland

Torbanlea

Ormeau

QTMP project timeline



Oct 2020

Funding announced for a new fleet of trains



June 2021

Alstom, CAF and Downer announced as shortlisted applicants to deliver QTMP



Oct 2021

Torbanlea announced as the location of the train manufacturing facility



April 2022

Early works commenced for the manufacturing facility



Mid-2022

Shortlisted applicants submitted final proposals



Oct 2022

Ormeau announced as the location for the rail facility



Feb 2023

Announcement of Downer as the preferred applicant to deliver QTMP



June 2023

Contract awarded to Downer



Late 2023

Construction of the manufacturing and rail facilities expected to commence



By 2032

All trains expected to be in service

Future dates are indicative only

Contact us

Find out more online at www.tmr.qld.gov.au/trainmanufacturing

Email qtmp@tmr.qld.gov.au | Call **1800 271 176*** | Post GPO Box, 1549 Brisbane 4001

**9am-5pm Monday-Friday* Free call from anywhere in Australia, call charges apply for mobile phones and payphones. Check with your service provider for call costs.*

13 QGOV (13 74 68) www.tmr.qld.gov.au | www.qld.gov.au

Stay up to date.

Subscribe to receive email updates and notifications.

