

# Warrego Highway EAST

## Have your say

You're invited to have your say about the future of the Warrego Highway between Dinmore and Helidon Spa.

TMR is in the process of contacting land owners directly affected by corridor preservation.

Further opportunities for the wider community to provide input will be advertised as the master plan project progresses.

To keep up-to-date with project progress and find out how you can be involved, be sure to sign up for Warrego Highway East updates at [www.tmr.qld.gov.au/WarregoHighwayEast](http://www.tmr.qld.gov.au/WarregoHighwayEast) or email [WarregoEast@tmr.qld.gov.au](mailto:WarregoEast@tmr.qld.gov.au).

Fill in the form below and send it to **Locked Bag 1, Warwick QLD 4370**, or scan and email it to [WarregoEast@tmr.qld.gov.au](mailto:WarregoEast@tmr.qld.gov.au). The form is also available online at [www.tmr.qld.gov.au/WarregoHighwayEast](http://www.tmr.qld.gov.au/WarregoHighwayEast).

Name \_\_\_\_\_  
 Address \_\_\_\_\_  
 Phone number \_\_\_\_\_  
 Email address \_\_\_\_\_

I would like to learn more about the project, please subscribe me project updates:  Yes  No

Your relationship to the Warrego Highway between Dinmore and Helidon Spa:

- Local community     Local business     Industry  
 Commuter     Cyclist

Other .....

### Feedback

We welcome your feedback about the future of the Warrego Highway.

\_\_\_\_\_  
 \_\_\_\_\_  
 \_\_\_\_\_  
 \_\_\_\_\_  
 \_\_\_\_\_  
 \_\_\_\_\_  
 \_\_\_\_\_  
 \_\_\_\_\_  
 \_\_\_\_\_  
 \_\_\_\_\_  
 \_\_\_\_\_  
 \_\_\_\_\_  
 \_\_\_\_\_  
 \_\_\_\_\_  
 \_\_\_\_\_



Congestion on the Warrego Highway

## Contact us

You can contact the project team on:

- Call** 1800 335 625\*  
 (during business hours)  
**Email** [WarregoEast@tmr.qld.gov.au](mailto:WarregoEast@tmr.qld.gov.au)  
**Web** [www.tmr.qld.gov.au/WarregoHighwayEast](http://www.tmr.qld.gov.au/WarregoHighwayEast)  
**Fax** 07 4639 0750  
**Post** Warrego Highway East  
 Department of Transport and Main Roads  
 Locked Bag 1  
 Warwick QLD 4370

\*Free call from anywhere in Australia, call charges apply for mobile phones and pay phones. Check with your service provider for call costs.



Warrego Highway looking west at Bundamba

The Department of Transport and Main Roads (TMR) plays an essential role in connecting Queensland and its people by providing a long-term strategic direction for transport infrastructure throughout the state.

Master planning is underway to determine how improvements to the Warrego Highway will be delivered over the next 20 years (and beyond). Currently TMR is working towards preserving the future transport corridor for the Warrego Highway between Dinmore and Helidon Spa. A key activity in successful corridor preservation and master planning is community consultation.

Soon TMR is commencing master plan consultation in your community with potentially affected land owners, stakeholders, industry and government.

### Planning for the Warrego Highway East

TMR's long-term vision is to upgrade the Warrego Highway between Dinmore and Helidon Spa as outlined in the Warrego Highway Upgrade Strategy.



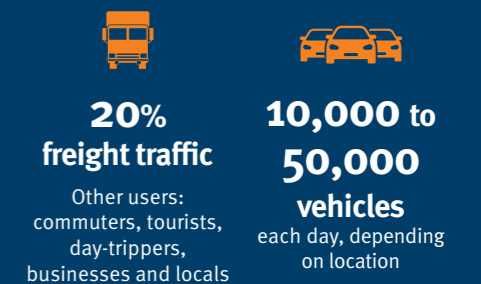
Road sign on Warrego Highway

## Did you know?

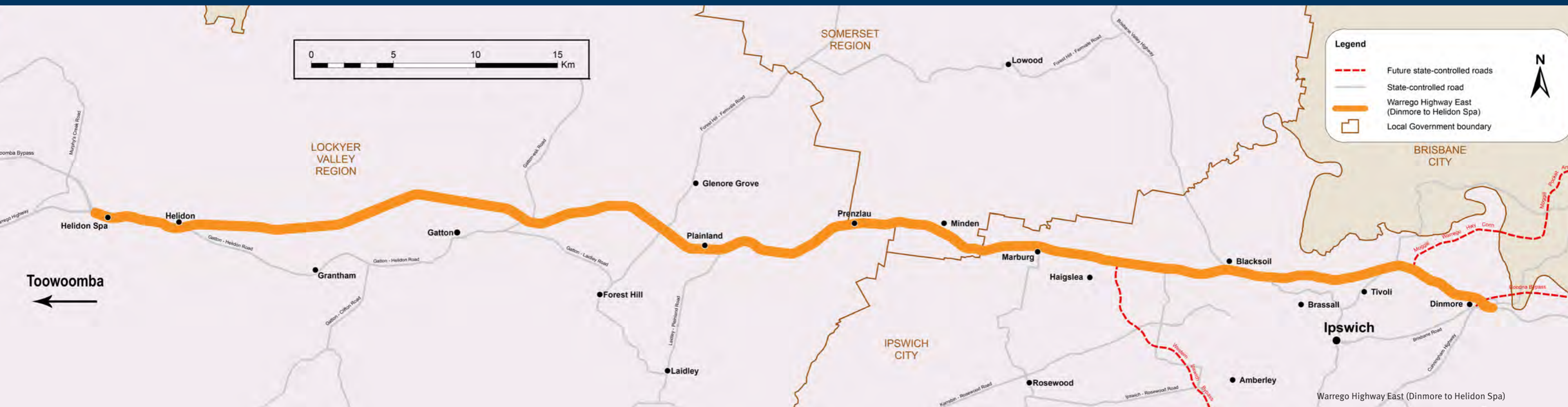
The Warrego Highway has developed over the years from a road providing local access between communities (for example, across the Lockyer Valley and between Ipswich and Toowoomba) to its current status as a key link that forms part of two National Land Transport Network corridors – Melbourne to Brisbane and Brisbane to Darwin.

As Queensland's principal east-west freight route, this section between Dinmore and Helidon Spa is the gateway to western Queensland and connects Darwin and Melbourne to the Port of Brisbane.

### Highway traffic at a glance:



Any personal information that may be collected within your response will be managed in accordance with the Information Privacy Act 2009. This information will not be disclosed to any third party outside TMR without your consent, unless required or authorised to do so by law.



## How is the future transport corridor being chosen?

The future transport corridor needs to be protected to prevent incompatible development along this key freight route over the next 30 years. The corridor is determined by four key factors:

- Requirements of the Warrego Highway Upgrade Strategy and other transport plans such as Electric Vehicle Strategy, Transport Coordination Plan and Managed Motorways
- Current and predicted road safety, traffic volumes and types of vehicles
- Current and predicted engineering standards
- Value for Money for the community.

The existing Warrego Highway corridor is the general blueprint for the future transport corridor. It has been chosen to minimise land impacts and to take advantage of existing infrastructure. However, there may be sections of the corridor which require realignment to ensure a safe and efficient road is constructed.

TMR is meeting with local governments and industry to gain additional information to assist in planning for the future of the Warrego Highway.

## Get involved

Master planning for the Warrego Highway will deliver major long-term benefits for Queensland and the communities connected by the Warrego Highway.

TMR is committed to informing and consulting land owners, communities, industry and all levels of government about the future of the Warrego Highway.

Consultation with potentially affected land owners will commence shortly to ensure all interested stakeholders have an opportunity to speak to the project team.

Feedback is encouraged as this will assist TMR to make informed decisions for the future of the Warrego Highway.

Conversations will be used to share information, gain local knowledge and test existing planning assumptions. TMR is committed to gaining a robust local and user understanding of the highway and discuss what can be done to improve safety and capacity, while supporting the growth of local communities and Queensland's economy.

This planning project is funded by the Queensland Government. The master plan corridor is expected to be protected in mid 2021.

## What is corridor planning?

Identifying future transport corridors is an important part of planning for the future.

All planned future transport corridors are categorised according to TMR's Approved Planning Policy.\*

The categories indicate the level of protection, how the corridor may be used for development and provide clear expectations for state transport infrastructure planning and delivery, including land requirements.

The policy outlines four categories:

### Category A – Unprotected Planning

This is internal departmental planning only and the default category unless planning meets the criteria to be in one of the other categories.

### Category B – Planning in Progress

This planning is available to the public, but has not yet identified a confirmed land requirement.

### Category C – Protected Planning

This planning is approved and associated corridor is protected, but not funded for construction.

### Category D – Protected and Funded Planning

This planning is approved and funded for construction.

\*[www.tmr.qld.gov.au/Community-and-environment/Planning-and-development/Planning-and-development-assessment-under-the-Planning-Act/Approved-Planning-Policy](http://www.tmr.qld.gov.au/Community-and-environment/Planning-and-development/Planning-and-development-assessment-under-the-Planning-Act/Approved-Planning-Policy)

## Which Category of Planning will be used for the Warrego Highway corridor?

It is anticipated the future road corridor for the Warrego Highway between Dinmore and Helidon Spa will be preserved and registered as Category C – Protected Planning following stakeholder consultation.

## Why is TMR planning for property impacts now if land is not needed for many years?

Long-term transport planning allows everyone to make informed decisions about future land use. It also ensures development can be planned and built around the identified transport corridor.

## How does the preservation of a future transport corridor affect property?

There is no immediate impact from long-term planning. However, preservation may affect future uses of identified land. This includes:

- land requirements appearing on publicly available maps and property searches
- TMR assessing any development applications related to a potentially impacted property
- possible restrictions on development on a potentially impacted property to preserve the future corridor. This means there may be restrictions on what can be built and how it can be built.