

Queensland Transport and Roads Investment Program (QTRIP) Industry Briefing 2025-26 to 2028-29

Rail Division

Peter Papantoniou
General Manager – Rail Infrastructure Delivery



Rail Division QTRIP and Leadership

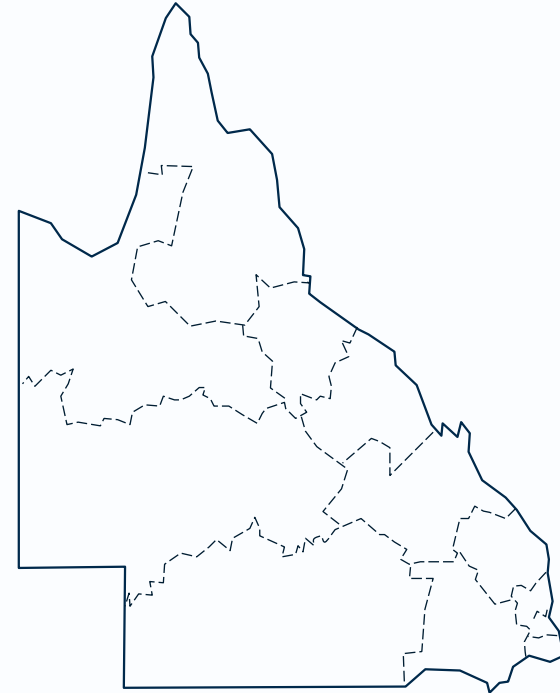
Paul Hoffmann
Deputy Director-General

Peter Papantoniou
**General Manager – Rail
Infrastructure Delivery Office**

Genevieve de Michele
Project Director – The Wave

Nathan Angus
**General Manager – Passenger
Rollingstock and Signalling**

Jane Brander
General Manager – Strategic Rail



Key QTRIP projects



The Wave (Rail) Stage 1

\$5.5 billion



Logan Gold Coast Faster Rail

\$5.75 billion



Queensland Train
Manufacturing Program –
Torbanlea & Ormeau

\$4.869 billion





Logan and Gold Coast Faster Rail

Works Package Update

Rail package

- March 2025 – Commenced design
- July 2025 – Received federal EPBC approval
- September 2025 – Enter into Project Alliance Agreement
- Through 2026 – Continue design, and construction expected to commence.

Open level crossing removal package

- Early 2025 – Geotechnical and site investigations to inform design
- Through 2025 – Design development
- Late 2025 – QR enabling works
- Late 2025 – Site establishment for major construction in early 2026

The Australian and Queensland governments have committed \$5.75 billion (50:50 basis) to double the tracks from two to four between Kuraby and Beenleigh, which will increase the capacity of the rail line and reduce waiting time at stations.

Loganlea Station Relocation

Loganlea Station is being relocated 500 metres south, opposite the Logan Hospital to better connect customers to this health precinct and other education and community services and improve accessibility and safety at the station.

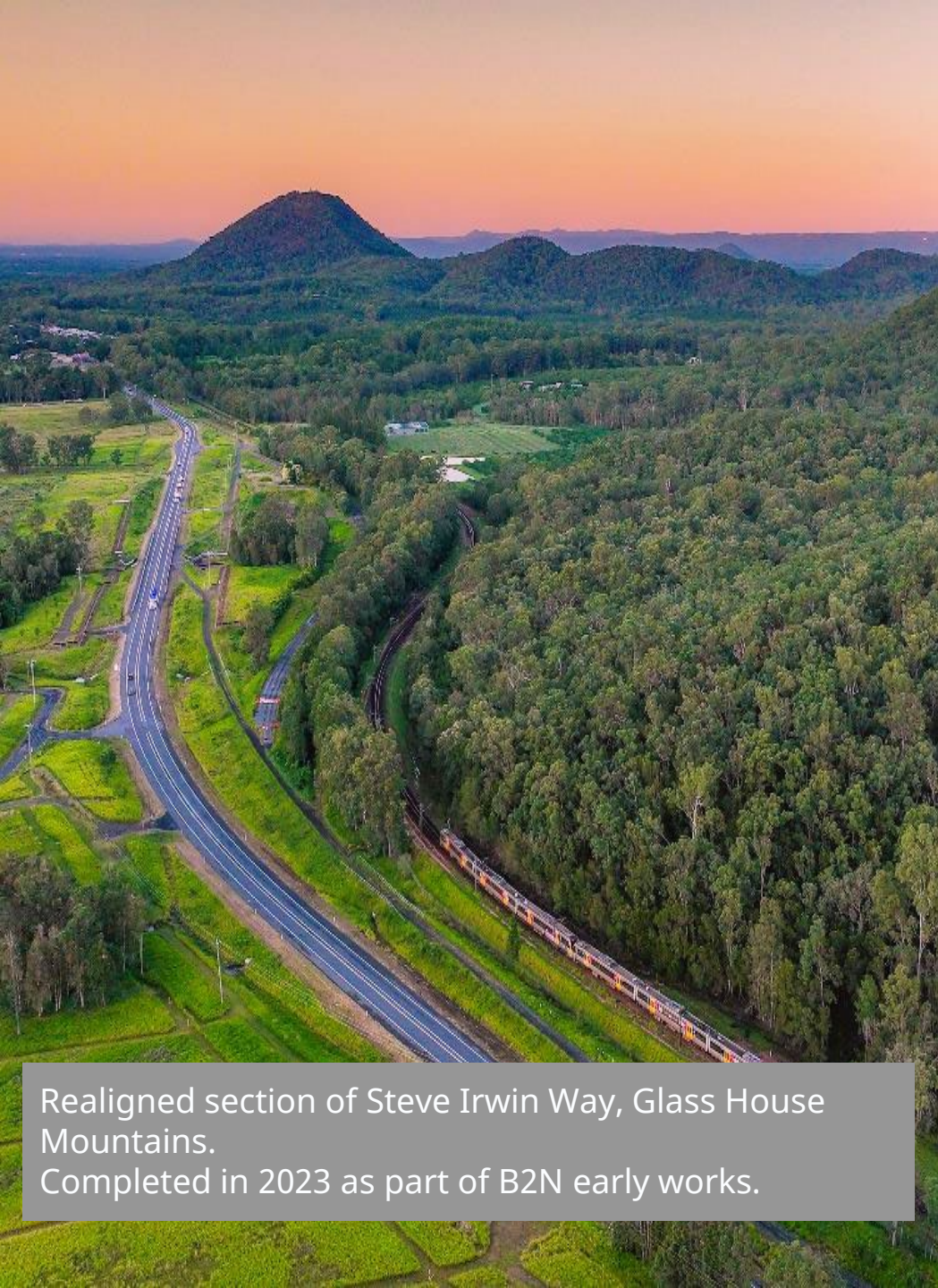
Project update

Late 2024-25	Site establishment and Valencia Street works
Through 2026	Track, station and road works
2027	Ongoing and completion works

As of 30 June 2025, 28% of works are complete.



The Australian and Queensland governments have jointly committed \$173.8 million to deliver this project. An at-grade park 'n' ride at the new station is being funded separately.



Realigned section of Steve Irwin Way, Glass House Mountains.
Completed in 2023 as part of B2N early works.

Beerburrum to Nambour Rail Upgrade

This project will increase capacity and improve reliability for passenger and freight services in the growing Sunshine Coast region.

Project update

Funding	\$1.004 billion (\$616.7 million Australian Government, \$387.5 million Queensland Government)
Stage 1 Scope	<ul style="list-style-type: none">• Collaborative Project Delivery Agreement awarded to a John Holland Queensland Seymour Whyte Join Venture• Construction enabling works commenced August 2025• Duplicate the rail line between Beerburrum and Beerwah• Deliver three new bridges• Address three level crossings• Expand three park 'n' ride facilities

The Wave (Rail) – Stage 1 and 2

Stage 1 includes:

- Delivery of a new dual-track rail line and associated infrastructure, and protection of the revised alignment to Caloundra
- Beerwah Station upgrade and two new stations at Aura (Bells Creek) and Caloundra
- Planning, design and market engagement to confirm delivery costs and timeframes to deliver the rail line to Birtinya

Stage 2 includes:

- Delivery of an additional 7km dual-track rail line (and associated infrastructure, including a 1km tunnel) from Caloundra to Birtinya
- Two new stations at Aroona and Birtinya

Project update

Funding	\$5.5 billion (Stage 1)
2024-25	<ul style="list-style-type: none">• Readiness for market: design and site investigations• Procurement commenced for Stage 1 (major works packages)• Queensland Government commitment to deliver The Wave
2025-26	Procurement continues for Stage 1, and commences for Stage 2



Torbanlea train manufacturing facility – July 2025



Ormeau rail facility – May 2025



High-Fidelity train mock-up – May 2025



Queensland Train Manufacturing Program (QTMP)

The total program value is \$9.5 billion, which includes the costs of 35 years of maintenance of the delivered assets.

Delivery Phase is continuing with major construction now underway, and all trains expected into service by 2032.

High-Fidelity train mock-up now in Brisbane for design validation and user testing.

Funding	\$4.869 billion
Scope	<ul style="list-style-type: none"> • manufacture of 65 six-car passenger trains • construction of a purpose-built train manufacturing facility at Torbanlea on the Fraser Coast • construction of a new rail facility, for maintenance and stabling at Ormeau on the Gold Coast • construction of a test track • construction of a new stabling yards and facilities for train presentation and cleaning.

European Train Control System (ETCS)

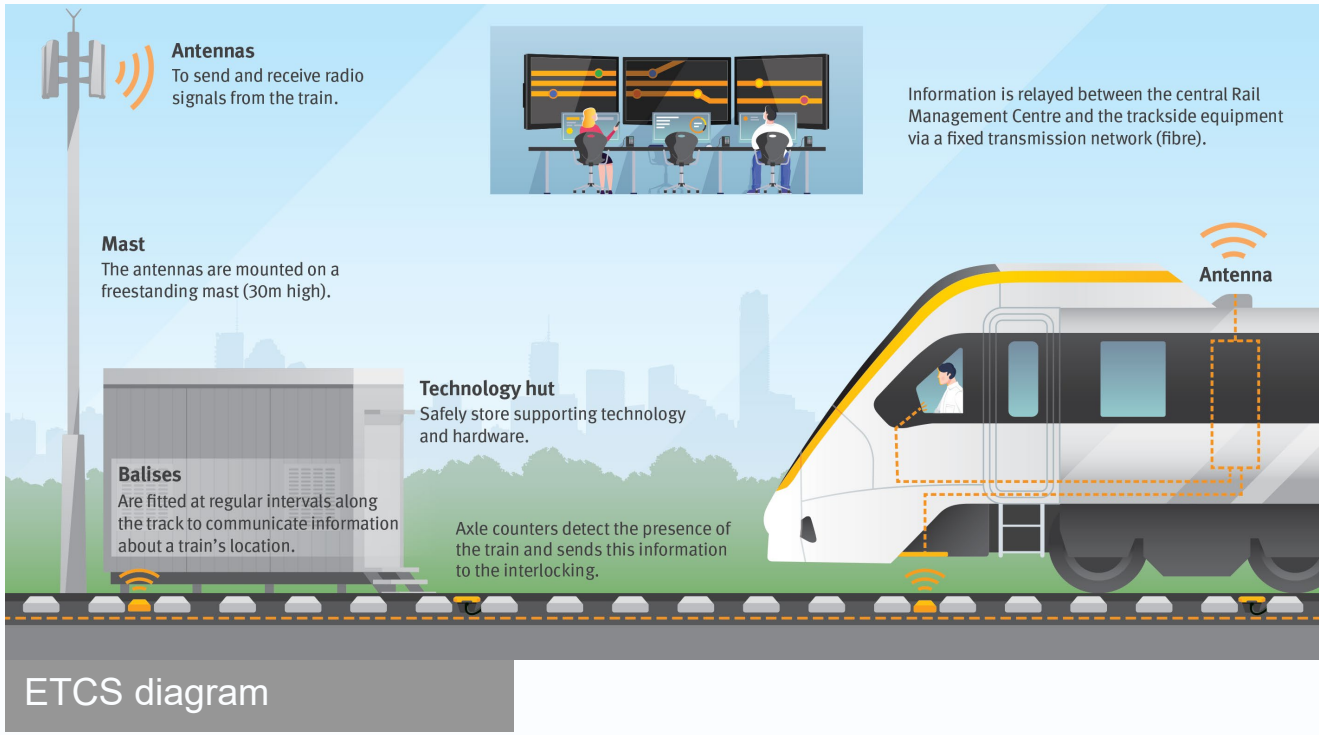
Modern digital signalling system that improves safety and operational performance, enabling trains to run closer together, increasing network capacity and service frequency and supporting our rapid growing population by making better use of existing infrastructure.

Funding

\$1.65 billion

Project Details

- The Queensland Government has committed \$1.318 billion to deliver ETCS on Cross River Rail and south to Moorooka, and \$339 million for delivery between Beenleigh to Varsity Lakes
- Planning underway for future rollouts aligned to Logan and Gold Coast Faster Rail and The Wave



**Thank you and stay
connected**

www.tmr.qld.gov.au