

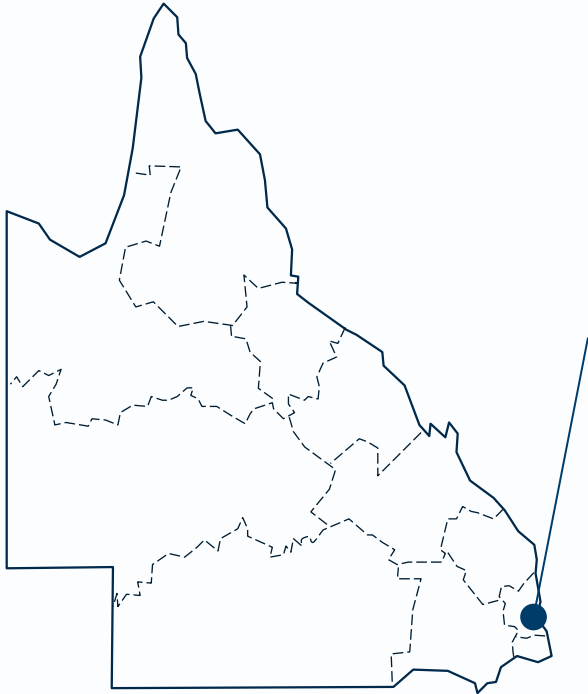
Queensland Transport and Roads Investment Program (QTRIP) Industry Briefing 2025-26 to 2028-29

Metropolitan Region

Stephen Mallows,
Acting Regional Director



Metropolitan QTRIP and Leadership



QTRIP investment:

- **\$4.7b** – 2025–26 to 2028–29
- **\$1.3b** – 2025–26



Stephen Mallows
**A/Regional
Director**



John Ryan
**Deputy Regional
Director**



Daniel Johnson
**Deputy Regional
Director**

Key QTRIP projects

- Centenary Bridge Upgrade
- Beams Road (Carseldine and Fitzgibbon), upgrade rail level crossing
- Lindum rail level crossing, upgrade signalisation
- Ipswich Motorway (Cunningham Arterial Road), Rocklea to Darra, remaining sections, planning
- Cunningham Highway (Ipswich - Warwick), Ipswich - Rosewood Road intersection, planning
- Linkfield Connection Road, Linkfield Road overpass upgrade
- Gympie Arterial Road and Beams Road, Carseldine, upgrade intersection



Artist's impression of Centenary Bridge Upgrade

Construction projects



Project name	Indicative length (km)	Work type	Contract Type*	Procurement method	Prequal levels*	Approximate quarter to be called	Indicative contract value
Chermside bus stop, construct southbound platform, 8799	N/A	New Bus Platform	TIC-CO	Open Market	R3, A2, F10	Oct-Dec 2025	Up to \$10m
Linkfield Connection Road, Linkfield Road overpass upgrade, 1160465	0.5	Overpass upgrade	TIC-CO	Open Market	B3, R4, A3, F75	Oct-Dec 2025	\$50m-\$100m
Riverview - Moggill Ferry Road, River Road to Brisbane River, improve drainage, pavement stabilisation and strengthening, 2384648	2.5	Asphalt rehabilitation	MIC-CO	Open Market	A3, F10	Apr-Jun 2026	Up to \$10m

Linkfield Connection Road, Linkfield Road overpass upgrade

Project description	Construction of new Linkfield Road overpass over Gympie Arterial Road
Procurement method	Open Market
Prequal levels*	B3, R4, A3, F75
Approximate quarter to be called	Oct-Dec 2025



Linkfield Road overpass over Gympie Arterial Road indicative locality map

Maintenance



Project name	Indicative length (km)	Work type	Contract Type*	Procurement method	Prequal levels*	Approximate quarter to be called	Indicative contract value
Ipswich Motorway Resurfacing Chainage 0 - 7.7km	7.7	Asphalt Resurfacing	MIC-SI	Open Market	A4	Oct-Dec 2025	\$10m-\$25m

Planning projects



Project name	Indicative length (km)	Work type	Procurement method	Prequal levels*	Approximate quarter to be called	Indicative contract value
Centenary Motorway (Darra to Yamanto), planning; 3115009	30	Undertake planning to inform the staging of investment in the corridor	Restricted Tender	CE2, HE3, TE3, TLUM3, TP3	Jul-Sep 2025	Up to \$10m
Gympie Arterial Road, Kedron to Bald Hills, planning; 2275860	6	Preliminary Evaluation of strategic road network connectivity in Bald Hills	Restricted Tender: Two-stage procurement: EOI to the open market, followed by ITO to shortlisted offerors.	BD3, CE3, DAI2, ES3, FC3, GE3, HE3, HD3, ITS3, TE3, TLUM3, TP3	Oct-Dec 2025	Up to \$10m
Cunningham Highway interchanges upgrades – Ripley Road and Swanbank Road interchanges, planning; 3374814	TBC	Corridor masterplan to identify and guide future upgrade projects in the corridor	Open Market	BD3, ES3, CE3, DAI1, GE2, HE3, HD3, TE3, TP3, IT3,FC3,TLUM3	Oct-Dec 2025	Up to \$10m

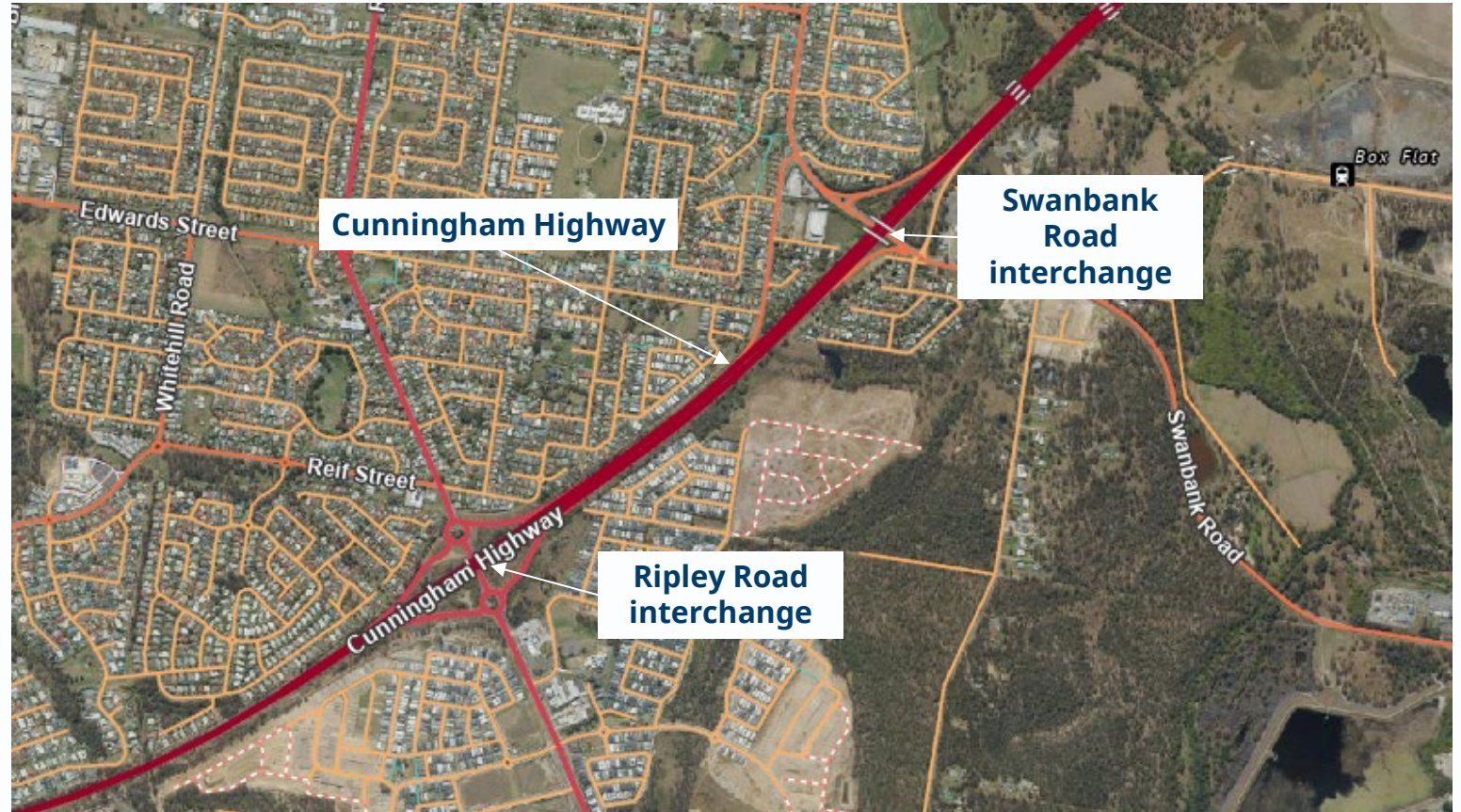
Planning projects



Project name	Indicative length (km)	Work type	Procurement method	Prequal levels*	Approximate quarter to be called	Indicative contract value
Western Brisbane multimodal transport network study, planning; 3517079	N/A	Planning	Restricted Tender	TP3, TE2, TLUM2, HE2	Oct-Dec 2025	Up to \$10m
Coorparoo Level Crossing precinct, Cavendish Road and Stanley Street East, planning, 2420128	N/A	Planning	Restricted Tender	BD3, CE3, DAI1, ES3, FC2, GE3, HE3, HD3, TE3, TLUM3, TP3	Jul-Sep 2025	Up to \$10m
Ipswich to Springfield rail line, business case, 2604930	25	Planning	Restricted Tender	BD3, CE3, ES3, GE3, HD3, TE3, TLUM3, TP3	Jan-Mar 2026	Up to \$10m
Gympie Road Planning Program; 3655457	12.5	Transport Planning Services	Restricted Tender	CE2, ES2, TE2, TLUM2, TP2	Jul-Sep 2025	Up to \$10m

Cunningham Highway upgrades – Ripley Road and Swanbank Road interchanges

Project description	Demonstrate the needs of the corridor to service existing and future demands, as well as develop a corridor masterplan to identify and guide future upgrade projects in the corridor
Procurement method	Open Market
Prequal levels*	BD3, ES3, CE3, DAI1, GE2, HE3, HD3, TE3, TP3, IT3, FC3, TLUM3
Approximate quarter to be called	Oct-Dec 2025



Cunningham Highway, Ripley Road and Swanbank Road interchanges indicative locality map

Gympie Arterial Road, Kedron to Bald Hills, planning

Project description	Gympie Arterial Road Connection - Preliminary evaluation of strategic road network connectivity in Bald Hills
Procurement method	Restricted Tender: Two-stage procurement: EOI to the open market, followed by ITO to shortlisted offerors
Prequal levels*	BD3, CE3, DAI2, ES3, FC3, GE3, HE3, HD3, ITS3, TE3, TLUM3, TP3
Approximate quarter to be called	Sep-Dec 2025



Gympie Arterial Road, Kedron to Bald Hills, planning indicative locality map

Material demand

Materials	Jul-Sep 2025	Oct-Dec 2025	Jan-Mar 2026	Apr-Jun 2026	Total
Asphalt - Estimated demand (tonnes)	11,500	9,500	9,000	12,000	42,000
Bitumen - Estimated demand (litres)	73,500	65,000	65,500	86,000	290,000
Granular - Estimated demand (m3)	200	200	200	200	800
Concrete - Estimated demand (m3)	100	600	600	600	1,900
Culvert - Estimated demand (linear metres)	0	200	300	200	700
Deck Units - Estimated demand	23	3	0	0	26

Endnotes

Contract Type, Procurement and Prequalification terms

A	Asphalt
B	Bridgeworks
BD	Bridge Design
CE	Cost Estimating
CFEP	Consultants for Engineering Projects
CPA	Collaborative Project Agreement
DAI	Data Analysis & Insights
ECI	Early Contractor Involvement
EE	Electrical Engineering
ENV	Environmental Services
EOI	Expression of Interest
ES	Economic Studies
ETI	Early Tender Involvement
F	Financial Level
FC	Financial / Commercial
FREW	First Response Emergency Works
GE	Geotechnical Engineering
HD	Hydraulic Design
HE	Highway Engineering
IBCP	Infrastructure Building and Construction Panel
ITS	Intelligent Transport Systems
MIC-CO	Minor Infrastructure Contract - Construct Only
MIC-DC	Minor Infrastructure Contract - Design and Construct
MIC-SI	Minor Infrastructure Contract - Sole Invitation

PAF	Project Assessment Framework
PD	Pavement Design
PM	Project Management
PPP	Public-Private Partnership
QBS	Qualification Based Selection
R	Roadworks
RAMC	Road Asset Maintenance Contract
RM	Risk Management
RMPC	Road Maintenance Performance Contract
SE	Structural Engineering
SOA	Standing Offer Arrangement
SSMW	Small Scale Minor Works
TE	Traffic Engineering
TIC-CO	Transport Infrastructure Contract - Construct Only
TIC-DC	Transport Infrastructure Contract - Design and Construct
TIC-SI	Transport Infrastructure Contract - Sole Invitation
TLUM	Transport & Land Use Modelling
TP	Transport Planning
VBS	Value Based Selection

Contact

For further information about our program
email:

metropolitanregion@tmr.qld.gov.au



**Thank you and stay
connected**

www.tmr.qld.gov.au