

Priority Route Maps

Mackay Isaac Whitsunday

Addendum to Principal Cycle Network Plan



Contents

1	Introduction	3
2	Priority Route Maps	4
	<i>Mackay Regional Council</i>	4
	<i>Mackay (Maps 1–3)</i>	4
	<i>Marian/Mirani (Map 4)</i>	7
	<i>Sarina (Map 5)</i>	8
	<i>Walkerston (Map 6)</i>	9
	<i>Isaac Regional Council</i>	10
	<i>Clermont (Map 7)</i>	10
	<i>Dysart (Map 8)</i>	11
	<i>Middlemount (Map 9)</i>	12
	<i>Moranbah (Map 10)</i>	13
	<i>Whitsunday Regional Council</i>	14
	<i>Airlie Beach (Map 11)</i>	14
	<i>Bowen (Map 12)</i>	15
	<i>Collinsville (Map 13)</i>	16
	<i>Proserpine (Map 14)</i>	17

Creative Commons information

© State of Queensland (Department of Transport and Main Roads) 2017



<http://creativecommons.org/licences/by/4.0/>

This work is licensed under a Creative Commons Attribution 4.0 Licence. You are free to copy, communicate and adapt the work, as long as you attribute the authors.



The Queensland Government supports and encourages the dissemination and exchange of information. However, copyright protects this publication. The State of Queensland has no objection to this material being reproduced, made available online or electronically but only if its recognised as the owner of the copyright and this material remains unaltered.

The Queensland Government is committed to providing accessible services to Queenslanders of all cultural and linguistic backgrounds. If you have difficulty understanding this publication and need a translator, please call the Translating and Interpreting Service (TIS National) on 13 14 50 and ask them to telephone the Queensland Department of Transport and Main Roads on 13 74 68.

Disclaimer: While every care has been taken in preparing this publication, the State of Queensland accepts no responsibility for decisions or actions taken as a result of any data, information, statement or advice, expressed or implied, contained within. To the best of our knowledge, the content was correct at the time of publishing.

1 Introduction

The Priority Route Maps are an addendum to the Mackay Isaac Whitsunday Principal Cycle Network Plan (the plan). The plan provides a vision for the principal cycle network to support, guide, and inform practitioners involved in the planning, design, and construction of the transport network. Principal routes are indicative and guide further planning and design to determine the precise route and design of cycle facilities. The Priority Route Maps identify the delivery priority that state and local government have assigned to principal routes in each local government area.

1.1 Role of Priority Route Maps

The Priority Route Maps guide state and local government planning, design, and investment to deliver the principal cycle network. The maps assist agencies to identify and use a range of mechanisms to deliver the network such as state and local government capital works programs, and road resealing and other maintenance programs. The maps also guide assessment of Queensland Government Cycle Network Local Government Grants program applications.

1.2 How were priority routes identified?

Principal cycle network routes were identified as Priority A (for delivery in the next 10 years), Priority B (10 to 15 years), Priority C (15 to 20 years), or Priority D (for delivery in the next 20 years or more). The priority given to each route was informed by workshops and consultation with local government and the Department of Transport and Main Roads regional officers, based on criteria focused on supporting trips to work, school, shops, and other major attractors. Consultation with cycling and other stakeholders will occur as part of future detailed investigations of the priority routes.

Prioritisation considered safety, topography, land use, current usage, and local knowledge of current or latent demand, planning, feasibility, and opportunities. A number of routes are shown as unprioritised. They are either already constructed or not considered a priority for investment at this stage. However, facilities may be delivered on unprioritised routes as part of other projects.

1.3 Endorsement and review

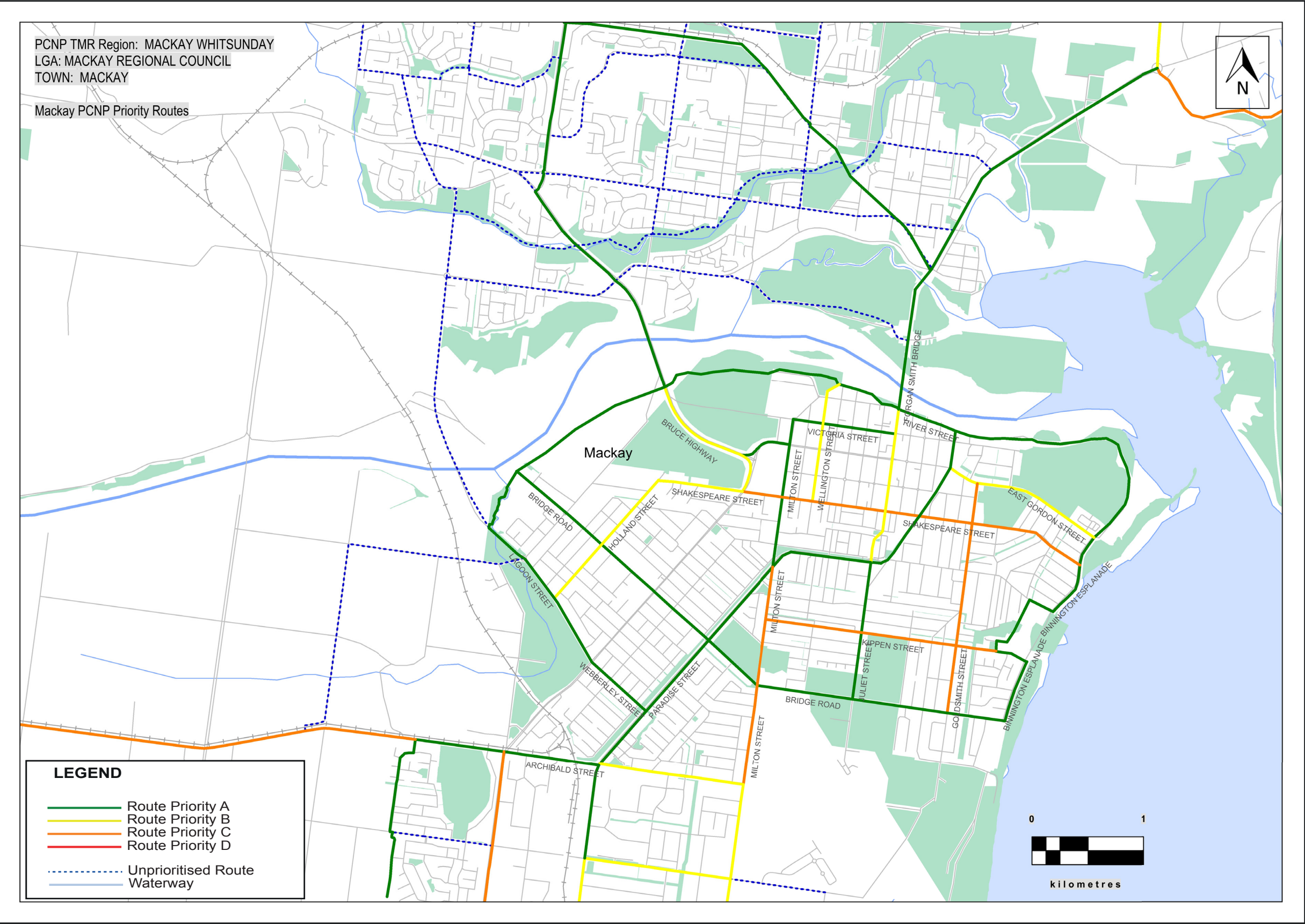
The Priority Route Maps have been endorsed by the department and all local governments covered by the plan.

The maps will be regularly reviewed to track delivery and respond to changing circumstances such as changes in demand and priority.

2 Priority Route Maps

This section presents the Priority Route Maps by local government area.

Mackay Regional Council – Mackay



Priority Route Map 1

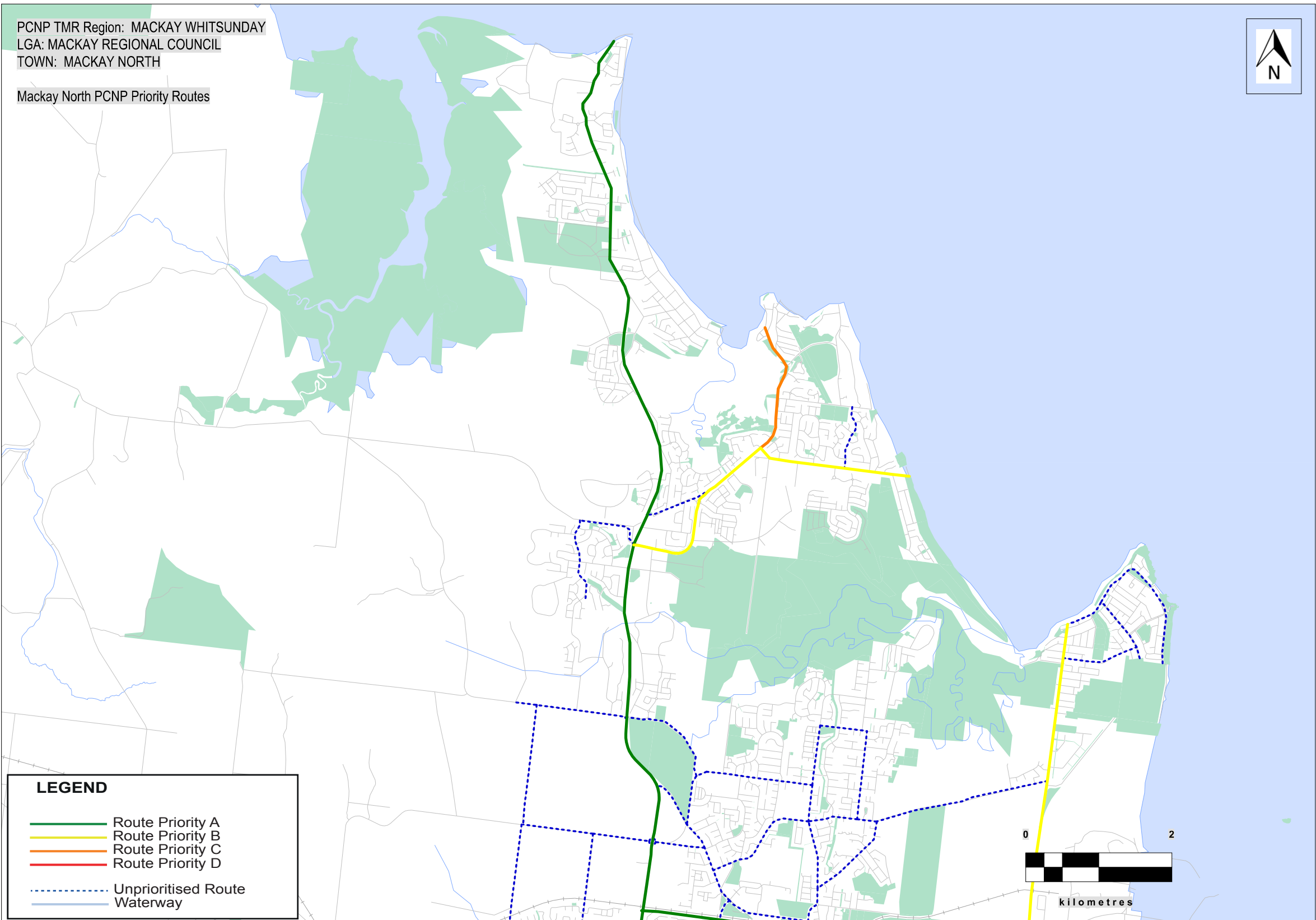
Mackay Isaac Whitsunday Principal Cycle Network

The routes shown are indicative and exist to guide further planning that will determine the precise routes and design of cycle facilities.

Disclaimer: While every care is taken to ensure the accuracy of this data, Transport and Main Roads and/or the State Government makes no representation or warranties about its accuracy, reliability, completeness or suitability for any particular purpose and disclaims all responsibility and all liability (including without limitation, liability in negligence) for all expenses, losses, damages (including indirect or consequential damage) and costs which you might incur as a result of the data being inaccurate or incomplete in any way and for any reason.



Mackay Regional Council – Mackay North



Priority Route Map 2

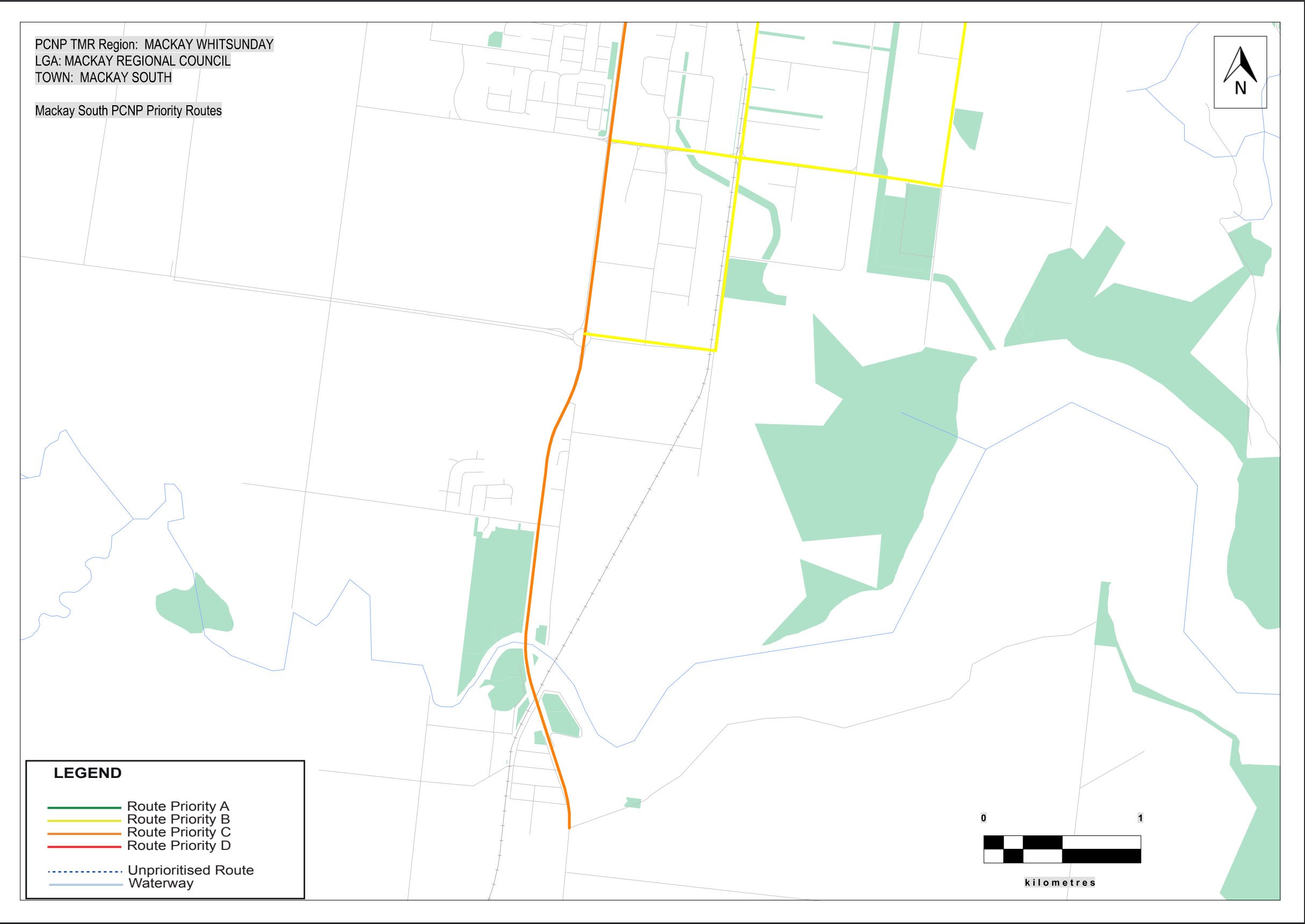
Mackay Isaac Whitsunday Principal Cycle Network

The routes shown are indicative and exist to guide further planning that will determine the precise routes and design of cycle facilities.

Disclaimer: While every care is taken to ensure the accuracy of this data, Transport and Main Roads and/or the State Government makes no representation or warranties about its accuracy, reliability, completeness or suitability for any particular purpose and disclaims all responsibility and all liability (including without limitation, liability in negligence) for all expenses, losses, damages (including indirect or consequential damage) and costs which you might incur as a result of the data being inaccurate or incomplete in any way and for any reason.



Mackay Regional Council – Mackay South



Priority Route Map 3

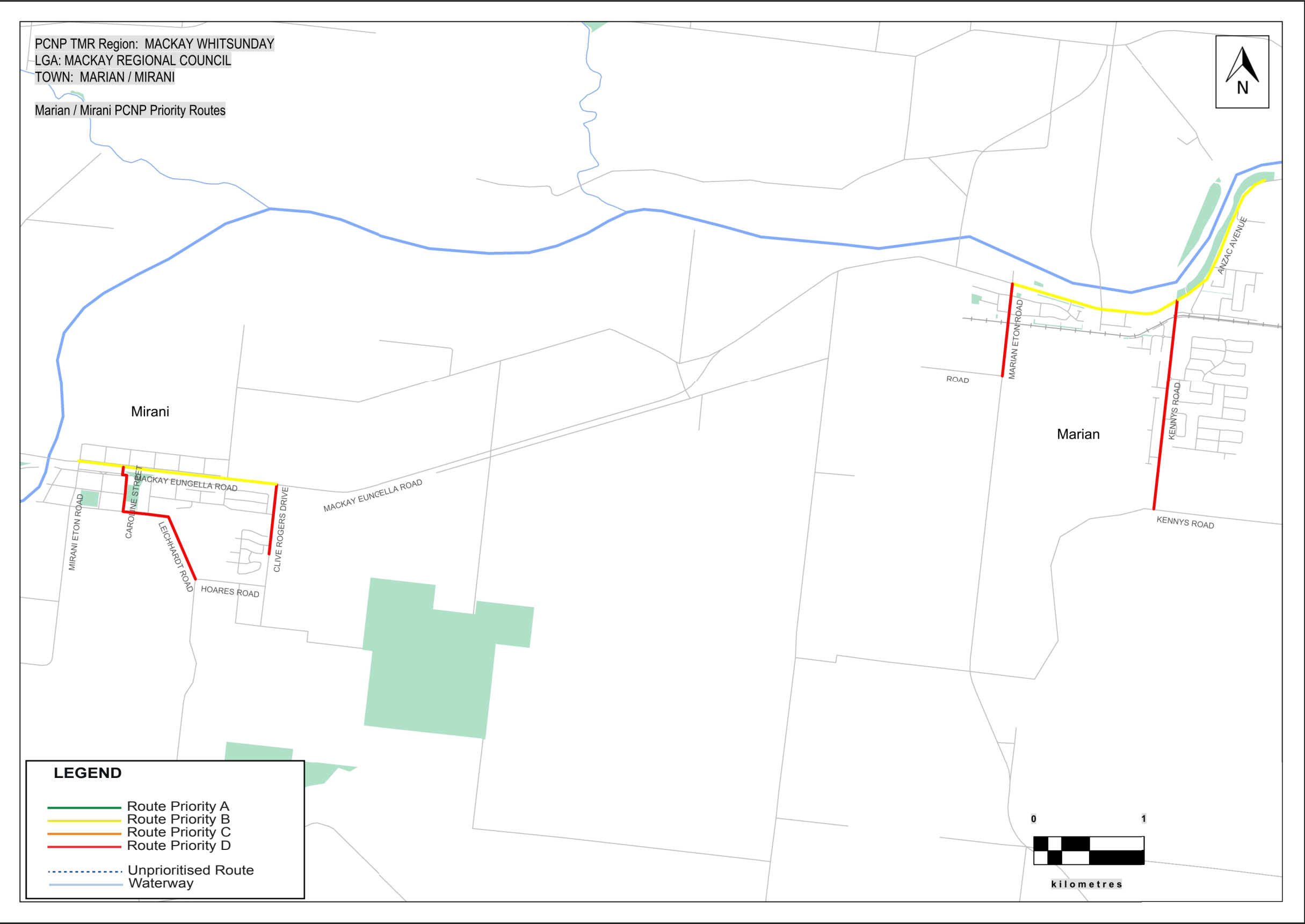
Mackay Isaac Whitsunday Principal Cycle Network

The routes shown are indicative and exist to guide further planning that will determine the precise routes and design of cycle facilities.

Disclaimer: While every care is taken to ensure the accuracy of this data, Transport and Main Roads and/or the State Government makes no representation or warranties about its accuracy, reliability, completeness or suitability for any particular purpose and disclaims all responsibility and all liability (including without limitation, liability in negligence) for all expenses, losses, damages (including indirect or consequential damage) and costs which you might incur as a result of the data being inaccurate or incomplete in any way and for any reason.



Mackay Regional Council – Marian and Mirani



Priority Route Map 4

Mackay Isaac Whitsunday Principal Cycle Network

The routes shown are indicative and exist to guide further planning that will determine the precise routes and design of cycle facilities.

Disclaimer: While every care is taken to ensure the accuracy of this data, Transport and Main Roads and/or the State Government makes no representation or warranties about its accuracy, reliability, completeness or suitability for any particular purpose and disclaims all responsibility and all liability (including without limitation, liability in negligence) for all expenses, losses, damages (including indirect or consequential damage) and costs which you might incur as a result of the data being inaccurate or incomplete in any way and for any reason.



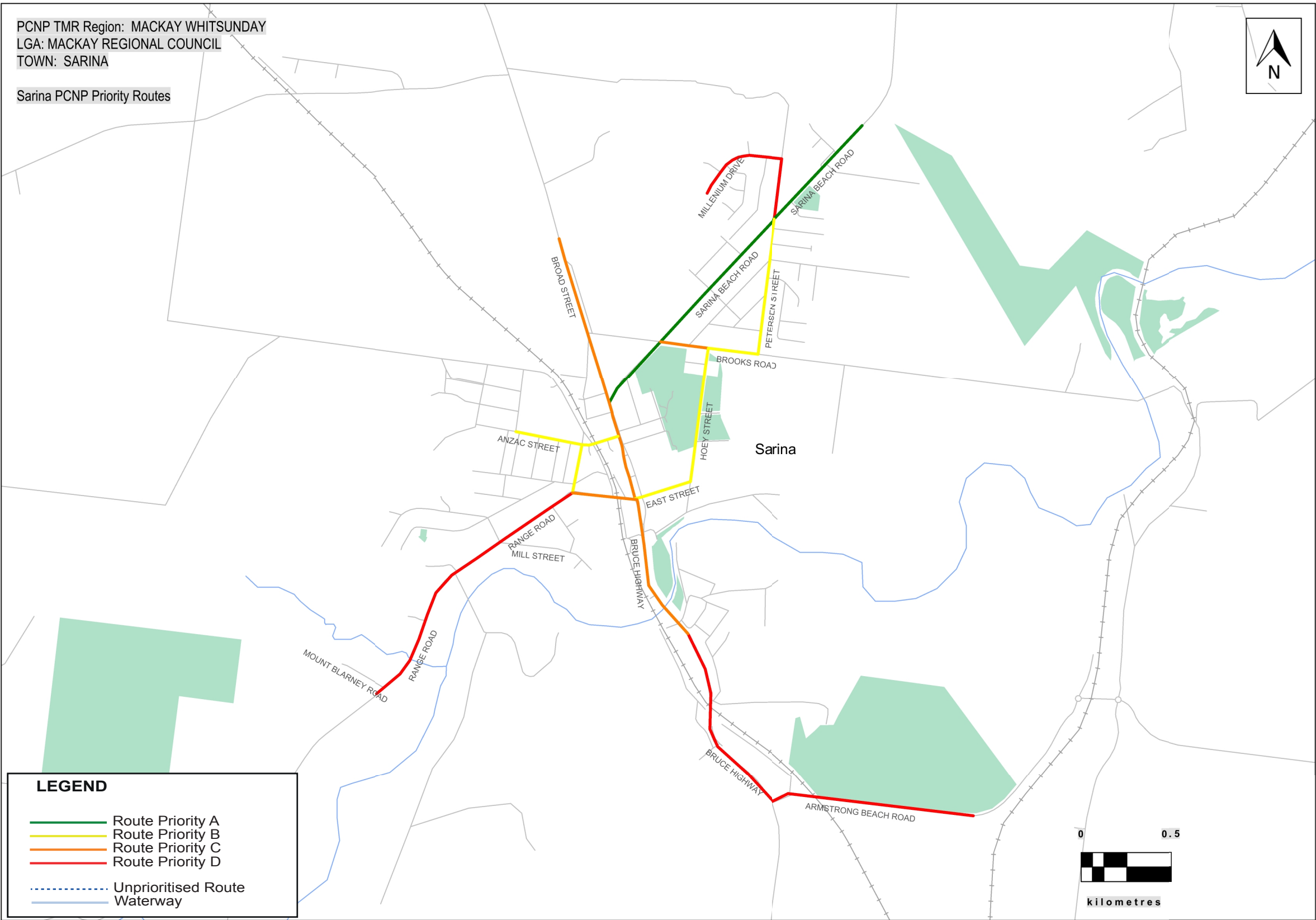
Mackay Regional Council – Sarina

Priority Route Map 5

Mackay Isaac Whitsunday Principal Cycle Network

The routes shown are indicative and exist to guide further planning that will determine the precise routes and design of cycle facilities.

Disclaimer: While every care is taken to ensure the accuracy of this data, Transport and Main Roads and/or the State Government makes no representation or warranties about its accuracy, reliability, completeness or suitability for any particular purpose and disclaims all responsibility and all liability (including without limitation, liability in negligence) for all expenses, losses, damages (including indirect or consequential damage) and costs which you might incur as a result of the data being inaccurate or incomplete in any way and for any reason.



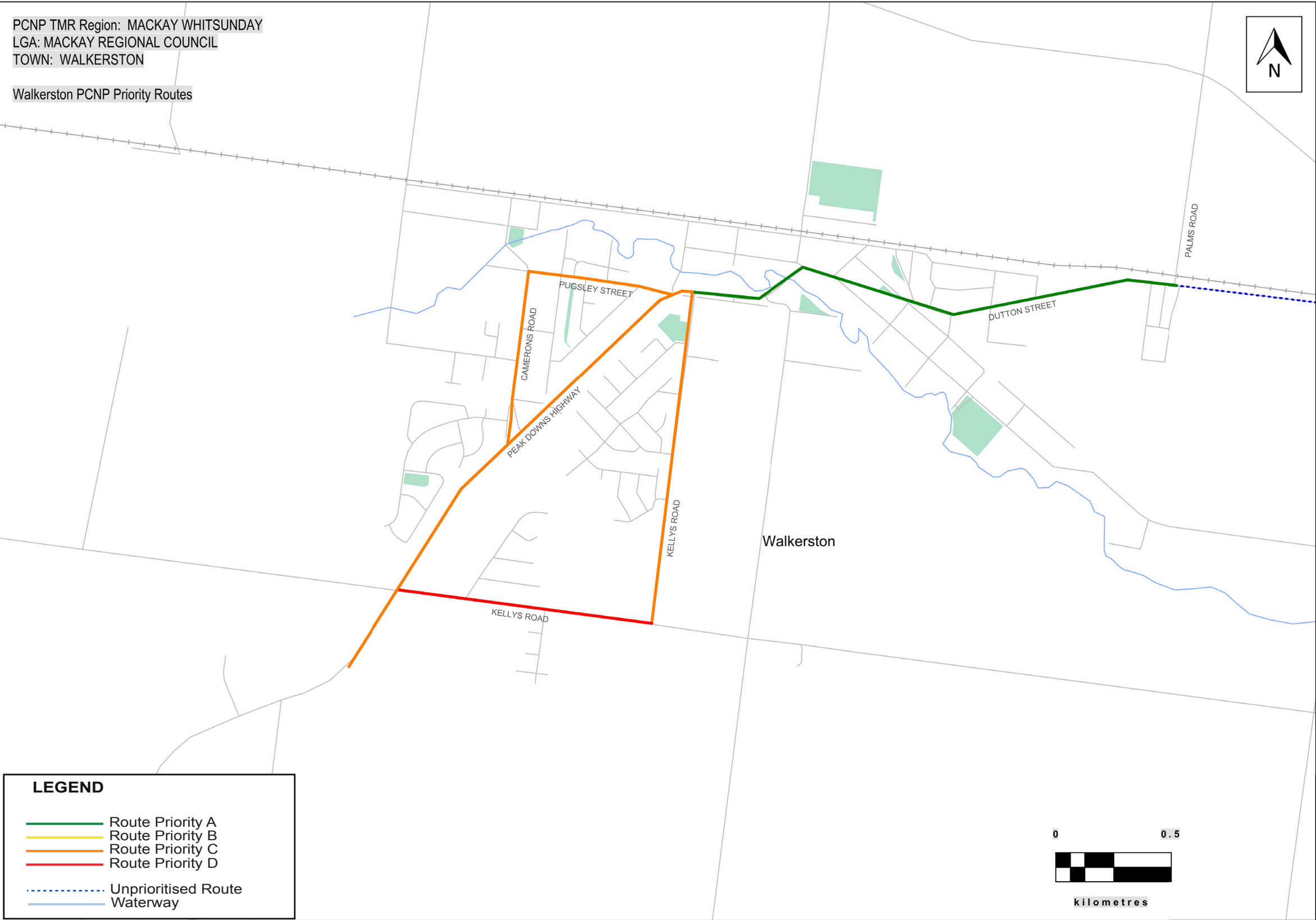
Mackay Regional Council – Walkerston

Priority Route Map 6

Mackay Isaac Whitsunday Principal Cycle Network

The routes shown are indicative and exist to guide further planning that will determine the precise routes and design of cycle facilities.

Disclaimer: While every care is taken to ensure the accuracy of this data, Transport and Main Roads and/or the State Government makes no representation or warranties about its accuracy, reliability, completeness or suitability for any particular purpose and disclaims all responsibility and all liability (including without limitation, liability in negligence) for all expenses, losses, damages (including indirect or consequential damage) and costs which you might incur as a result of the data being inaccurate or incomplete in any way and for any reason.

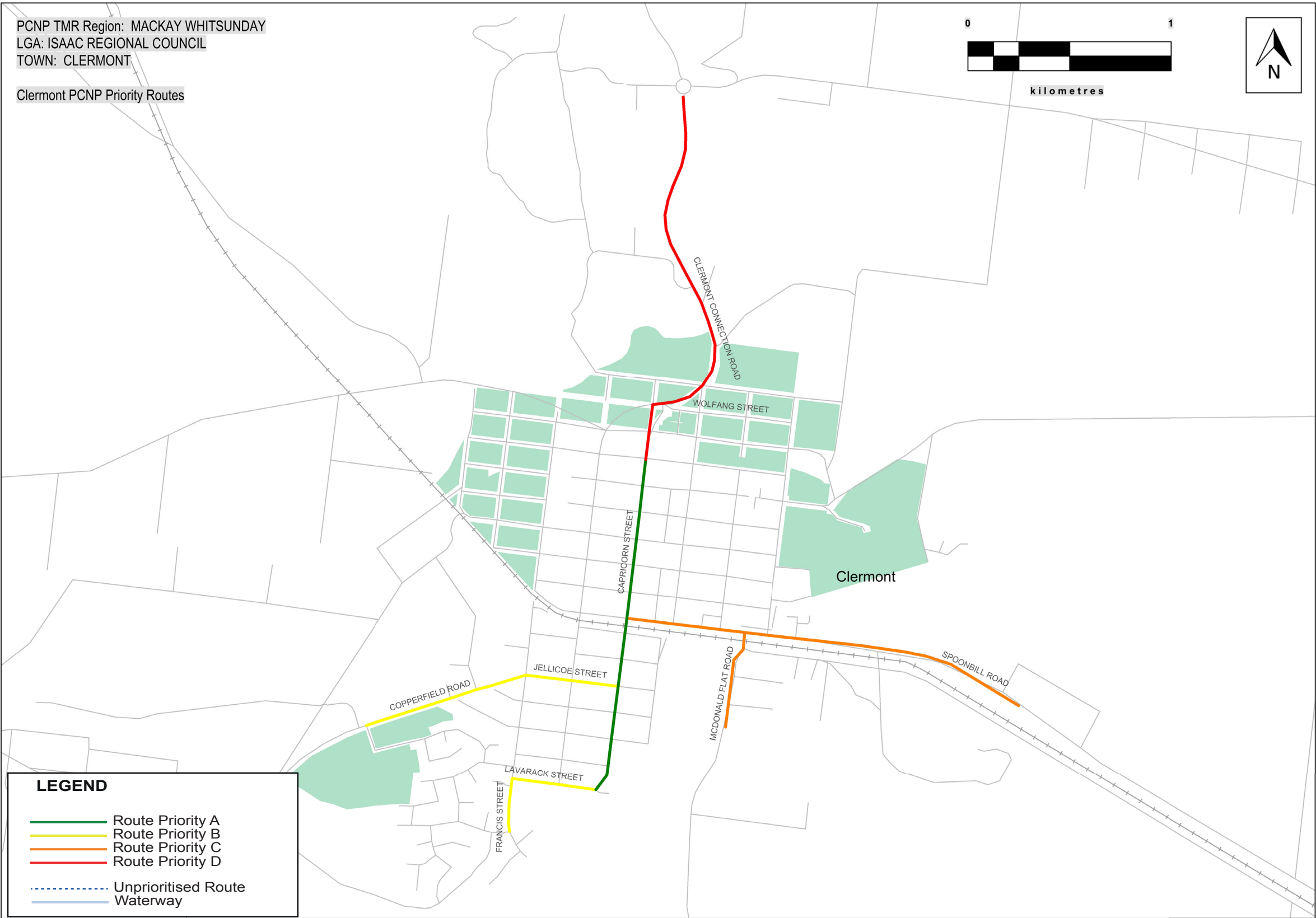


Priority Route Map 7

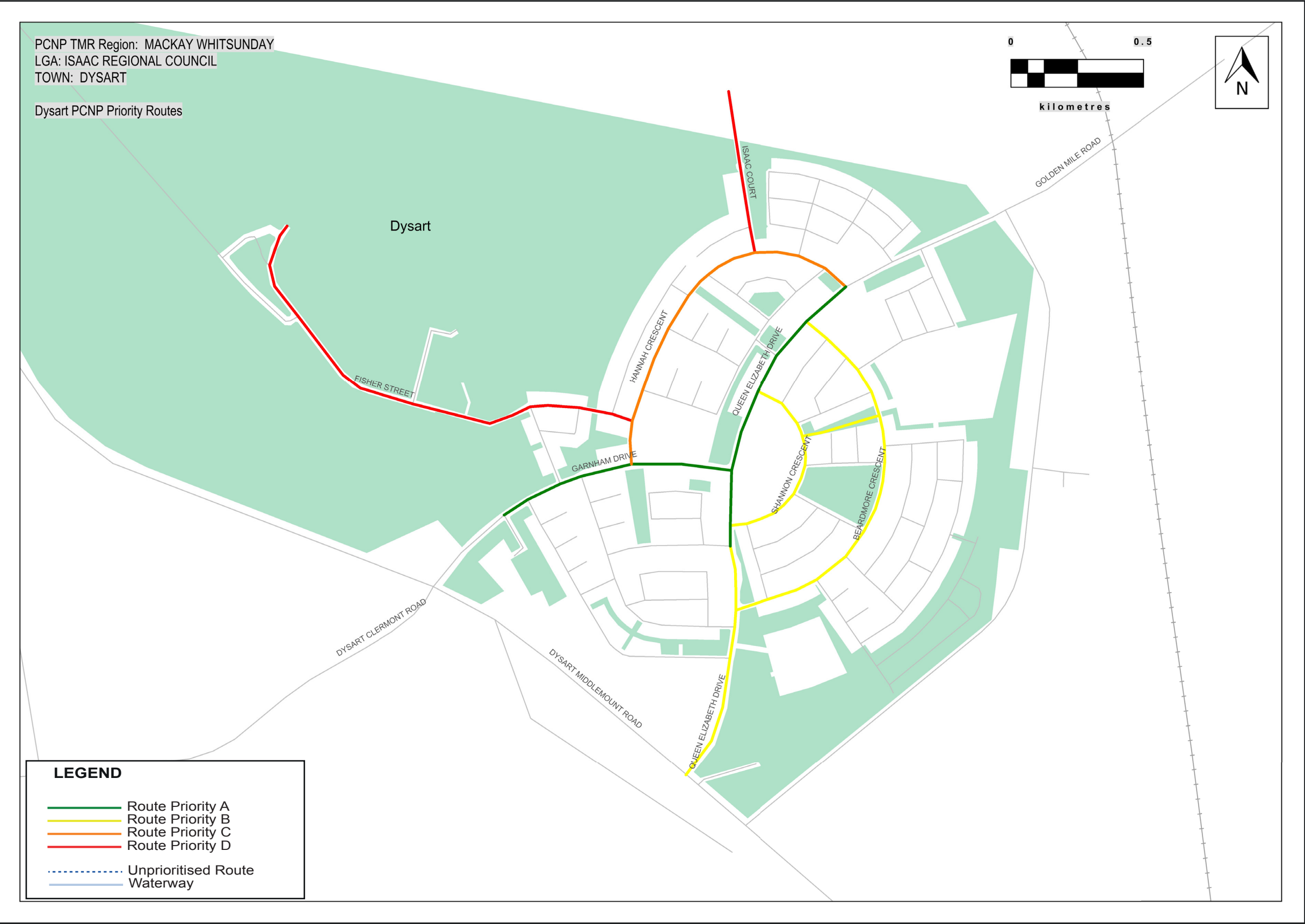
Mackay Isaac Whitsunday Principal Cycle Network

The routes shown are indicative and exist to guide further planning that will determine the precise routes and design of cycle facilities.

Disclaimer: While every care is taken to ensure the accuracy of this data, Transport and Main Roads and/or the State Government makes no representation or warranties about its accuracy, reliability, completeness or suitability for any particular purpose and disclaims all responsibility and all liability (including without limitation, liability in negligence) for all expenses, losses, damages (including indirect or consequential damage) and costs which you might incur as a result of the data being inaccurate or incomplete in any way and for any reason.



Isaac Regional Council – Dysart



Priority Route Map 8

Mackay Isaac Whitsunday Principal Cycle Network

The routes shown are indicative and exist to guide further planning that will determine the precise routes and design of cycle facilities.

Disclaimer: While every care is taken to ensure the accuracy of this data, Transport and Main Roads and/or the State Government makes no representation or warranties about its accuracy, reliability, completeness or suitability for any particular purpose and disclaims all responsibility and all liability (including without limitation, liability in negligence) for all expenses, losses, damages (including indirect or consequential damage) and costs which you might incur as a result of the data being inaccurate or incomplete in any way and for any reason.



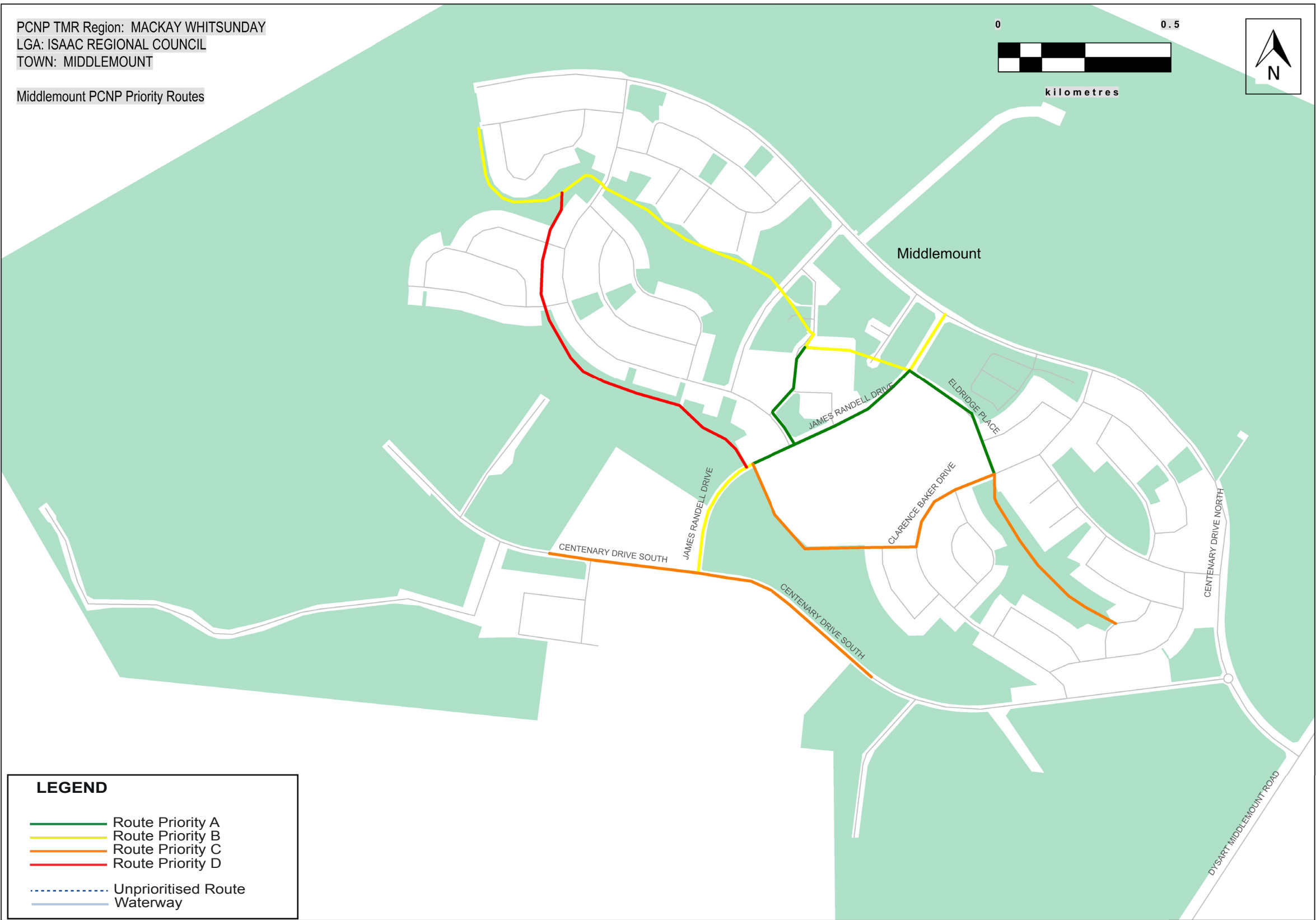
Isaac Regional Council – Middlemount

Priority Route Map 9

Mackay Isaac Whitsunday Principal Cycle Network

The routes shown are indicative and exist to guide further planning that will determine the precise routes and design of cycle facilities.

Disclaimer: While every care is taken to ensure the accuracy of this data, Transport and Main Roads and/or the State Government makes no representation or warranties about its accuracy, reliability, completeness or suitability for any particular purpose and disclaims all responsibility and all liability (including without limitation, liability in negligence) for all expenses, losses, damages (including indirect or consequential damage) and costs which you might incur as a result of the data being inaccurate or incomplete in any way and for any reason.

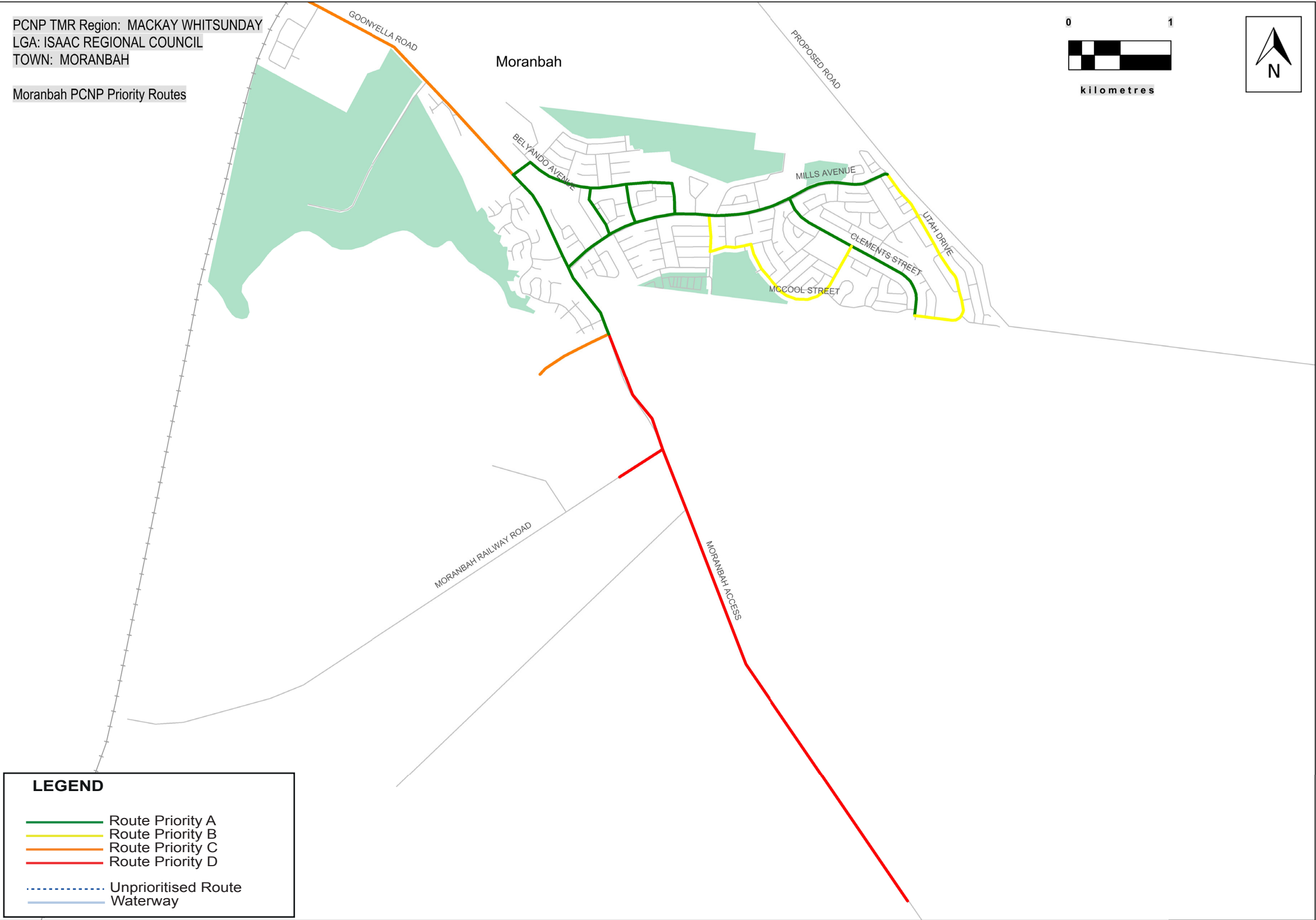


Priority Route Map 10

Mackay Isaac Whitsunday Principal Cycle Network

The routes shown are indicative and exist to guide further planning that will determine the precise routes and design of cycle facilities.

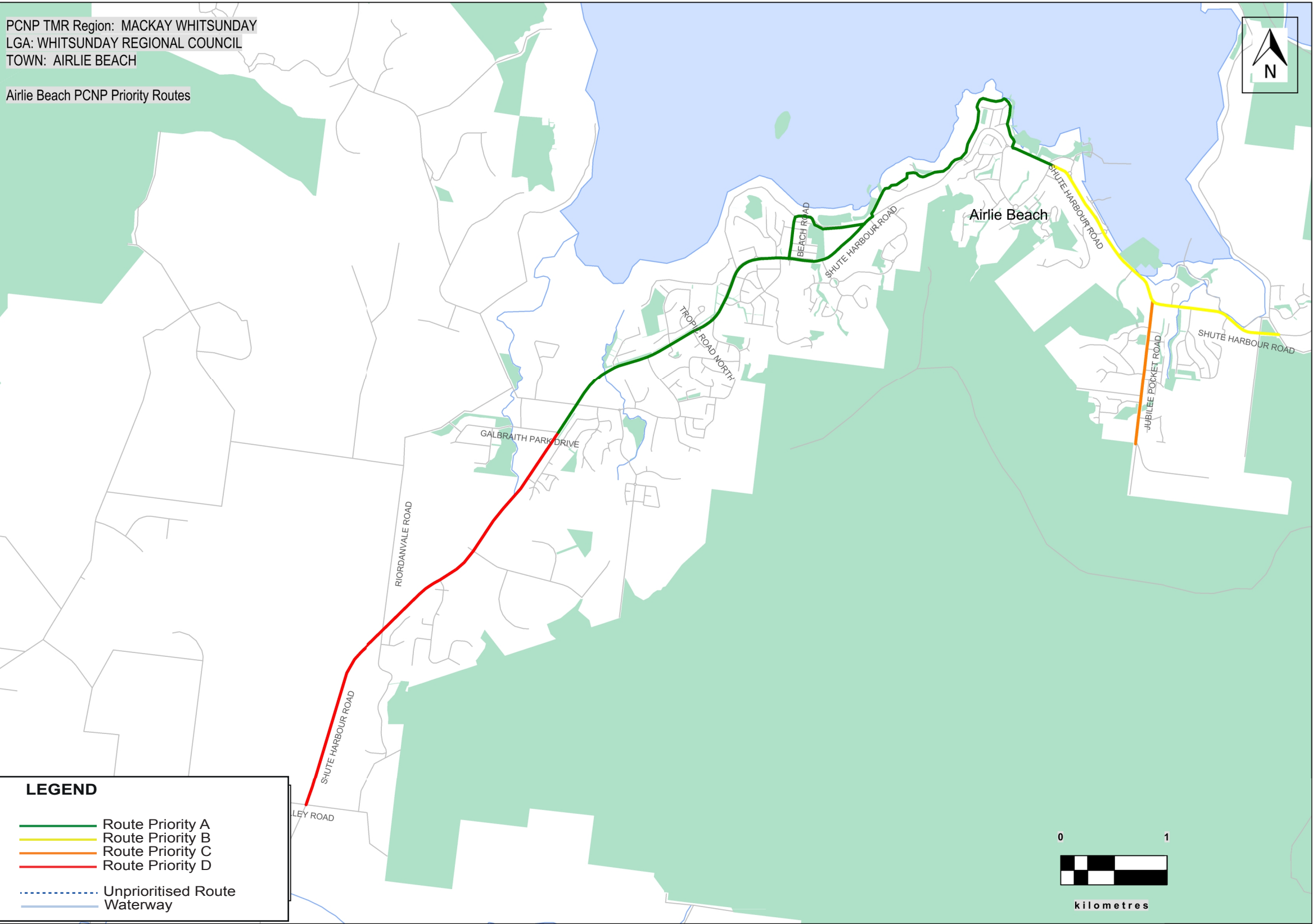
Disclaimer: While every care is taken to ensure the accuracy of this data, Transport and Main Roads and/or the State Government makes no representation or warranties about its accuracy, reliability, completeness or suitability for any particular purpose and disclaims all responsibility and all liability (including without limitation, liability in negligence) for all expenses, losses, damages (including indirect or consequential damage) and costs which you might incur as a result of the data being inaccurate or incomplete in any way and for any reason.



Whitsunday Regional Council – Airlie Beach

PCNP TMR Region: MACKAY WHITSUNDAY
LGA: WHITSUNDAY REGIONAL COUNCIL
TOWN: AIRLIE BEACH

Airlie Beach PCNP Priority Routes



Priority Route Map 11

Mackay Isaac Whitsunday Principal Cycle Network

The routes shown are indicative and exist to guide further planning that will determine the precise routes and design of cycle facilities.

Disclaimer: While every care is taken to ensure the accuracy of this data, Transport and Main Roads and/or the State Government makes no representation or warranties about its accuracy, reliability, completeness or suitability for any particular purpose and disclaims all responsibility and all liability (including without limitation, liability in negligence) for all expenses, losses, damages (including indirect or consequential damage) and costs which you might incur as a result of the data being inaccurate or incomplete in any way and for any reason.



Whitsunday Regional Council – Bowen

PCNP TMR Region: MACKAY WHITSUNDAY
LGA: WHITSUNDAY REGIONAL COUNCIL
TOWN: BOWEN

Bowen PCNP Priority Routes



Priority Route Map 12

Mackay Isaac Whitsunday Principal Cycle Network

The routes shown are indicative and exist to guide further planning that will determine the precise routes and design of cycle facilities.

Disclaimer: While every care is taken to ensure the accuracy of this data, Transport and Main Roads and/or the State Government makes no representation or warranties about its accuracy, reliability, completeness or suitability for any particular purpose and disclaims all responsibility and all liability (including without limitation, liability in negligence) for all expenses, losses, damages (including indirect or consequential damage) and costs which you might incur as a result of the data being inaccurate or incomplete in any way and for any reason.



Whitsunday Regional Council – Collinsville

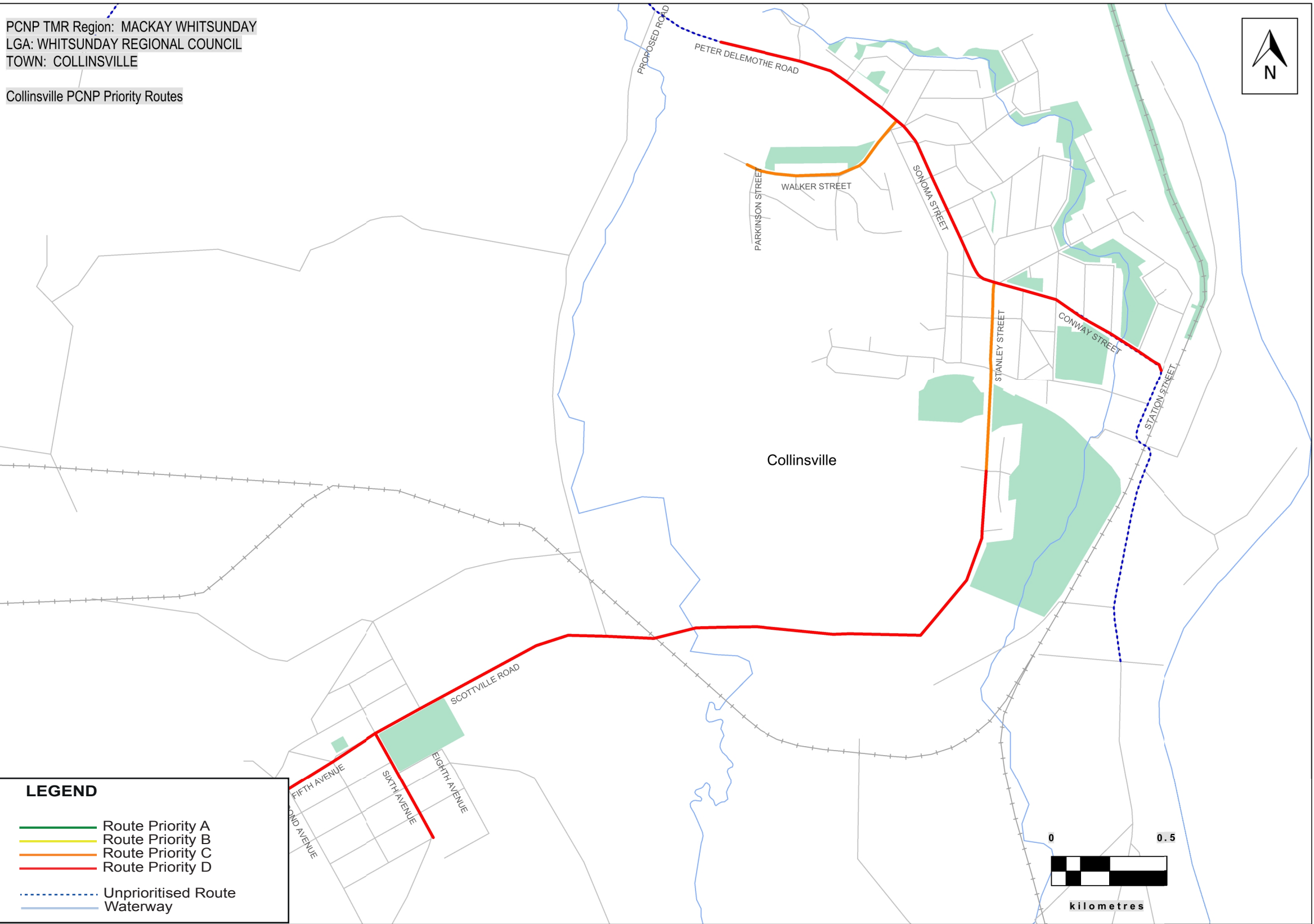
Priority Route Map 13

Mackay Isaac Whitsunday Principal Cycle Network

The routes shown are indicative and exist to guide further planning that will determine the precise routes and design of cycle facilities.

Disclaimer: While every care is taken to ensure the accuracy of this data, Transport and Main Roads and/or the State Government makes no representation or warranties about its accuracy, reliability, completeness or suitability for any particular purpose and disclaims all responsibility and all liability (including without limitation, liability in negligence) for all expenses, losses, damages (including indirect or consequential damage) and costs which you might incur as a result of the data being inaccurate or incomplete in any way and for any reason.

PCNP TMR Region: MACKAY WHITSUNDAY
LGA: WHITSUNDAY REGIONAL COUNCIL
TOWN: COLLINSVILLE
Collinsville PCNP Priority Routes



Whitsunday Regional Council – Proserpine

Priority Route Map 14

Mackay Isaac Whitsunday Principal Cycle Network

The routes shown are indicative and exist to guide further planning that will determine the precise routes and design of cycle facilities.

Disclaimer: While every care is taken to ensure the accuracy of this data, Transport and Main Roads and/or the State Government makes no representation or warranties about its accuracy, reliability, completeness or suitability for any particular purpose and disclaims all responsibility and all liability (including without limitation, liability in negligence) for all expenses, losses, damages (including indirect or consequential damage) and costs which you might incur as a result of the data being inaccurate or incomplete in any way and for any reason.

