

**Other investments in the Gateway Motorway**

The South East Queensland (SEQ) region is Australia's fastest-growing region, attracting on average 55,000 new residents each year over the past two decades. The region is also experiencing rapid employment growth and is emerging as a significant economic hub with national and international recognition.

The Queensland Government is delivering the state's most ambitious infrastructure program, not only in SEQ but across the state. This program includes investment in the Gateway Motorway through this study, the Gateway Upgrade Project and the Gateway Motorway South Planning Study.

**Gateway Upgrade Project**

The Gateway Upgrade Project will duplicate the Gateway Bridge and provide upgrades to 20 km of the Gateway Motorway from Mt Gravatt-Capalaba Road to Nudgee Road. The project includes a new Gateway Motorway deviation extending from the Gateway Bridges through the old and existing airport site to Nudgee Road. To deliver timely benefits to motorists, additional lanes will be opened to traffic as they are completed. The new Gateway Motorway deviation will open four lanes to traffic in late 2009. The northern part of the Gateway Upgrade Project is shown on the map.

To find out more, contact the Gateway Upgrade Project on 1800 600 155 or visit [www.gatewayupgradeproject.com.au](http://www.gatewayupgradeproject.com.au)

**Gateway Motorway South Planning Study**

Main Roads is planning to upgrade the Gateway Motorway between and including the interchanges with the Pacific Motorway and Mt Gravatt-Capalaba Road. This will involve widening this section of the motorway. The upgrade will improve road safety, ease congestion and cater for increased traffic demand.

To find out more about this project, please visit the Main Roads website, [www.mainroads.qld.gov.au](http://www.mainroads.qld.gov.au).

**Community reference groups**

Main Roads is seeking expressions of interest from regional residents, business owners and community leaders to join a community reference group (CRG) for their local area.

Local residents, business owners and those involved in community organisations can all be part of a CRG. CRGs help us gather information and views to assist the Gateway Motorway North Planning Study team.

Detailed information about how you can become a member of a CRG is available by contacting us via any of the methods listed opposite.

**Contact us**

You can contact the study team through any of the following methods.

Website: [www.mainroads.qld.gov.au](http://www.mainroads.qld.gov.au)

Phone: Freecall 1800 991 879

Email: [gatewaynorth@mainroads.qld.gov.au](mailto:gatewaynorth@mainroads.qld.gov.au)

Post: Gateway Motorway: North Planning Study  
Reply Paid 105  
Fortitude Valley Q 4006



**Go to our staffed displays**

From 7 November to 30 November 2007, Main Roads will be hosting staffed public displays at these locations:

**Chermide Library**  
375 Hamilton Road, Chermide  
7 November – 10 November 2007 (10am – 2pm)

**Bracken Ridge Plaza**  
Cnr Telegraph and Norris Roads, Bracken Ridge  
13 November – 14 November 2007 (10am – 2pm)

**Centro Taigum**  
Cnr Church and Beams Roads, Taigum  
20 November – 21 November 2007 (10am – 2pm)

**Toombul Shopping Centre**  
1015 Sandgate Road, Toombul  
27, 28, 30 November (10am – 2pm)

**Office of Hon. Neil Roberts MP**, Cnr Toombul and Melton Roads, Northgate  
29 November 2007 (4pm – 8pm)

The displays will be staffed by our study team who can answer your questions.

**Go to our fixed displays**

Main Roads will also have fixed displays, which are not staffed, at libraries and local elected representatives' offices from 5 November 2007 to 30 November 2007. Fixed display sites are:

**Banyo Library**, St Vincent's Road, Banyo

**Bracken Ridge Library**, Bracken Street, Bracken Ridge

**Sandgate Library**, Second Avenue, Sandgate

**Office of Hon. Neil Roberts MP**, Cnr Toombul and Melton Roads, Northgate

**Office of Benny Barry MP**, Shop 2, 1315 Gympie Road, Aspley

**Office of Vicky Darling MP**, 7 Third Avenue, Sandgate

**What happens during a study**

During a planning study Main Roads needs to undertake a number of investigations. These investigations will provide a complete picture of the area we are working in.

Some of these investigations include:

- reviewing environmental and cultural heritage elements, which includes liaising with Indigenous groups to ensure we identify all sites of cultural significance, investigating how our options can have the least impact on environmental and cultural heritage values
- analysing road data such as the effect of options on local and state traffic networks, travel times, the road surface and volume of traffic, which helps to assess the safety and efficiency of the road
- geotechnical surveys such as soil testing to make sure any option can be built

You may see work starting on these investigations in the near future.



**Study timing**

**Stage 1: Gather information**

This stage includes establishing community reference groups, briefing key community leaders and groups, staffed and fixed public displays and generally seeking information to assist Main Roads in determining options for the planning study.

**Stage 2: Determine upgrade options**

The options analysis phase is when options are presented to the community and the community provides feedback. This stage will include meetings of the community reference groups, staffed and fixed public displays, detailed briefings with community leaders and groups, focus groups and collecting detailed information from the public to determine a preferred option.

**Stage 3: Deliver preferred option**

Main Roads will inform the community about the preferred option and explain why it has been chosen.

**Preparing a future Gateway**

The Department of Main Roads is conducting a planning study on 16 km of the Gateway Motorway from south of Nudgee Golf Course to the Bruce Highway.

With the South East Queensland population projections forecasting continued growth, traffic volumes on the motorway are likely to rise from about 40,000 vehicles per day to about 80,000 vehicles per day by 2026.

Over the next two years we will develop a preferred option which best caters for future traffic growth and addresses the safety and efficiency of road users. To achieve a preferred option, we need your input.



We are aware of several issues about the Gateway Motorway, including:

- traffic incidents at Deagon and Nudgee
  - delays at the Bicentennial Drive interchange during major events at the Brisbane Entertainment Centre
  - congestion and delays at interchanges during peak hours.
- Please tell us what you think. Do you agree with the above issues? What issues do you have? You can use the enclosed feedback form or one of the many contact methods outlined on the back page. Your input will help us determine options that consider the broader views of the community.

This newsletter is the first point of contact. We will be hosting staffed public displays in shopping centres and setting up fixed displays in libraries and elected representatives' offices to capture your comments.

*Let's plan the future of the Gateway together.*

**We are here** Stage 1: Gathering information

Stage 2: Determine upgrade options

Stage 3: Deliver preferred option

**Get involved**

We need your issues, ideas, opinions, thoughts and concerns with this study. No feedback is considered too small – we understand that to deliver a preferred option, we need to take onboard all community feedback.

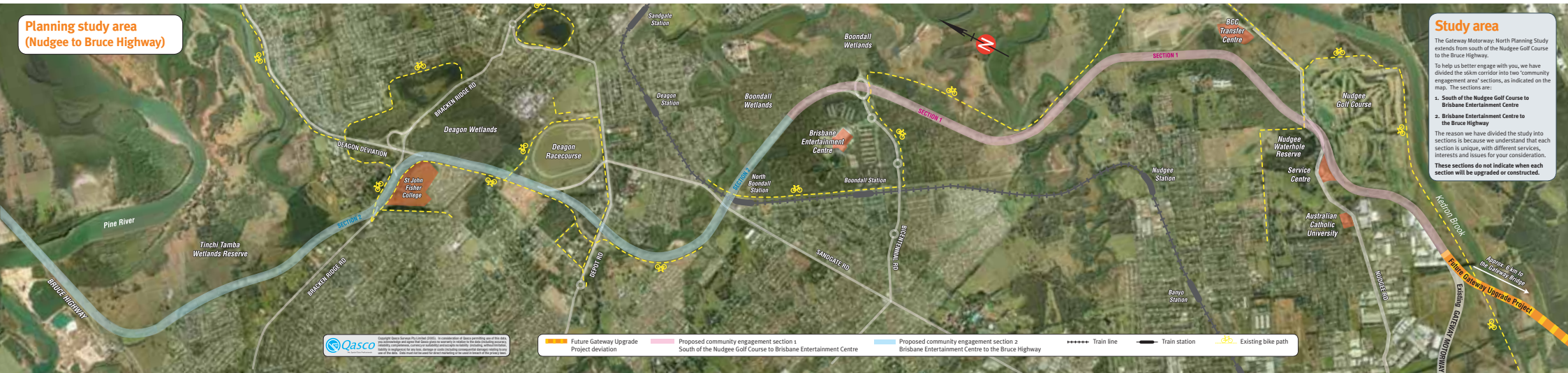
There are a number of ways to provide your feedback:

- Go to a staffed or fixed display
- Join a community reference group
- Contact us by mail, phone or email
- Visit the Main Roads website
- Fill out and return the feedback form enclosed in this newsletter by 30 November 2007.

See detailed information on these contact methods on the following pages, and find the feedback form enclosed.

We will continue to update you on the project through newsletters, letters, advertisements, fact sheets and the Main Roads website.

**Planning study area  
(Nudgee to Bruce Highway)**



**Study area**

The Gateway Motorway: North Planning Study extends from south of the Nudgee Golf Course to the Bruce Highway.

To help us better engage with you, we have divided the 6km corridor into two 'community engagement area' sections, as indicated on the map. The sections are:

1. South of the Nudgee Golf Course to Brisbane Entertainment Centre
2. Brisbane Entertainment Centre to the Bruce Highway

The reason we have divided the study into sections is because we understand that each section is unique, with different services, interests and issues for your consideration.

**These sections do not indicate when each section will be upgraded or constructed.**

**Qasco**  
Copyright Qasco Services Pty Limited (2020). In consideration of Qasco providing you with this data, the knowledge and/or any other special access or services, the data is provided for your personal and confidential use only. It is not to be used for any other purpose, including for resale, distribution, or any other form of public or private communication. Qasco is not responsible for any errors or omissions in this data.

- Future Gateway Upgrade Project deviation
- Proposed community engagement section 1 South of the Nudgee Golf Course to Brisbane Entertainment Centre
- Proposed community engagement section 2 Brisbane Entertainment Centre to the Bruce Highway
- Train line
- Train station
- Existing bike path