

Rothwell Station

Moreton Bay Rail Link will deliver a 12.6 km dual-track rail line between Petrie and Kippa-Ring. Six new rail stations will be delivered as part of the project at Kallangur, Murrumba Downs, Mango Hill, Kinsellas Road, Rothwell and Kippa-Ring. Works will also be required at Petrie Station where the Moreton Bay Rail Link connects with the existing rail network.

These stations will incorporate a high level of security and visually appealing urban design.

Station access and parking

- A park 'n' ride facility will be provided for commuters with vehicle access planned from an extension to McKillop Street and a new road link via Gynther Road and Buchanan Street.
- Park 'n' ride numbers will be finalised as part of detailed design.

Preliminary station design

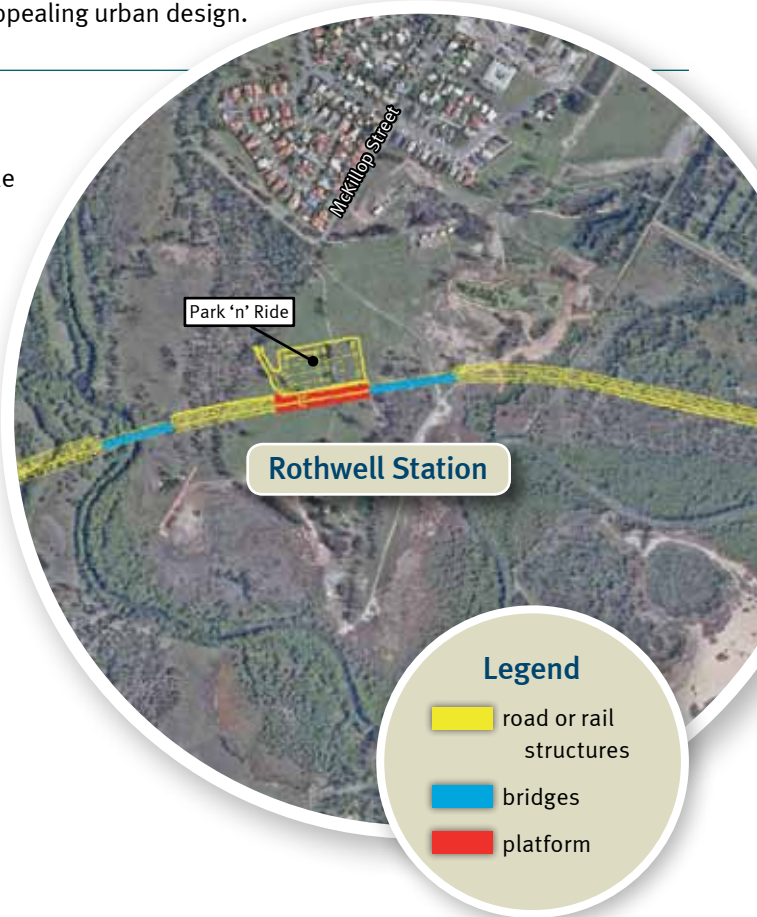
Final station design will be in accordance with guidelines developed by the TransLink Transit Authority and Queensland Rail.

Station features will be refined during detailed design, but will typically include:

- 175-metre-long side platforms, an overhead walkway with stairs and lifts, a ticket office, passenger waiting facilities, electronic timetable information and other public amenities
- landscaping with native species and drought-resistant plants
- security cameras and emergency phones
- provision for bus/rail interchange facilities as required.

Environmental impacts

- The project recognises the rail corridor is in close proximity to the conservation wetlands around Hays Inlet.
- The project team is working closely with state and federal environmental agencies to ensure that appropriate construction methodologies are chosen to minimise any further potential impacts.



Contact us

Moreton Bay Rail Link recognises the proximity of homes and businesses to the rail corridor. The project will carefully plan all work to ensure construction methodologies are chosen that limit the impact on the surrounding community as much as possible.

The project is committed to meaningful community engagement and encourages residents and businesses to contact the project team for more information.

Phone: 1800 096 821 *Free call within Australia. Higher rates apply from mobile phones and pay phones.*

Email: moretonbayrail@tmr.qld.gov.au

Website: www.tmr.qld.gov.au/moretonbayrail

Post: Moreton Bay Rail Link
Transport and Main Roads
Reply Paid 2439, Brisbane Qld 4001