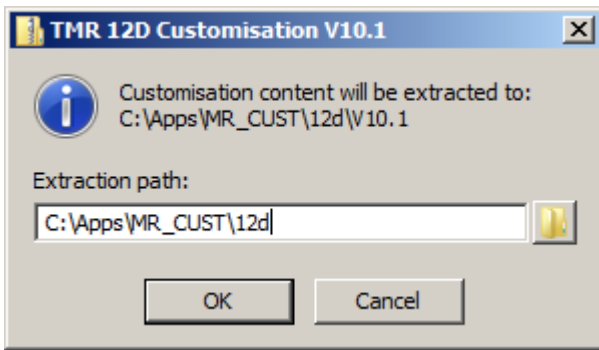




Transport and Main Roads 12d Model customisation content is distributed as a self extracting archive file. Download and run the file: 'TMR 12d Customisation V10.1.exe' to extract the customisation content. By default the installation path is: **C:\Apps\MR_CUST\12d**



Existing files at this location will be overwritten.

Folders will be created that contain customisation content for Designers and Surveyors.

C:\APPS\MR_CUST\12D\V10.1

```
+---Shortcuts
|   TMR 12d (32) V10.1 for Win 32.lnk
|   TMR 12d (32) V10.1 for Win 64.lnk
|   TMR 12d (64) V10.1 for Win 64.lnk
|
+---User
|   .....
|
\---User_Lib
|   .....
```

Running 12d Model V9 and the TMR customisation.

The TMR customisation includes a few preconfigured shortcuts that can be used to launch 12D Model V10 using the customisation. Use the shortcut that best matches your configuration, or modify the shortcut properties to suit.

Shortcuts folder: 'C:\Apps\MR_CUST\12d\V10.1\Shortcuts'

Note:

Users from external agencies should check the files ‘...\\User\\env_configs.4d’ and ‘...\\User\\env_default.4d’ to ensure that configuration options reflect local operational environments.

If an extract path other than C:\\APPS\\MR_CUST\\12D is used then several configuration files in the customisation content will require modification to reflect the changed location.

Some settings in env_default.4d may need to be checked to ensure the paths to external applications where required, are valid:

- windows_vehicle_path_4d C:\\Apps\\Vpath
- CULVERT_MR C:\\Program Files (x86)\\Culvert
- OSROAD_MR C:\\Program Files (x86)\\OSROAD

Removing the customisation.

If this version of the customisation is no longer required, the folders can simply be removed by deleting 'C:\\Apps\\MR_CUST\\12d\\V10.1'

For Surveyors

AUSGeoid98 and AUSGeoid09 v1.0 AHD-ellipsoid separation values (N-values) for use in 12d Model are supplied as a separate download.

Download and run the file: ‘TMR 12d Customisation V10.1_Winter_data.exe’ to extract the content.

By default the installation path is: **C:\\Apps\\MR_CUST\\12d\\V10.1\\User_Lib\\Survey**

