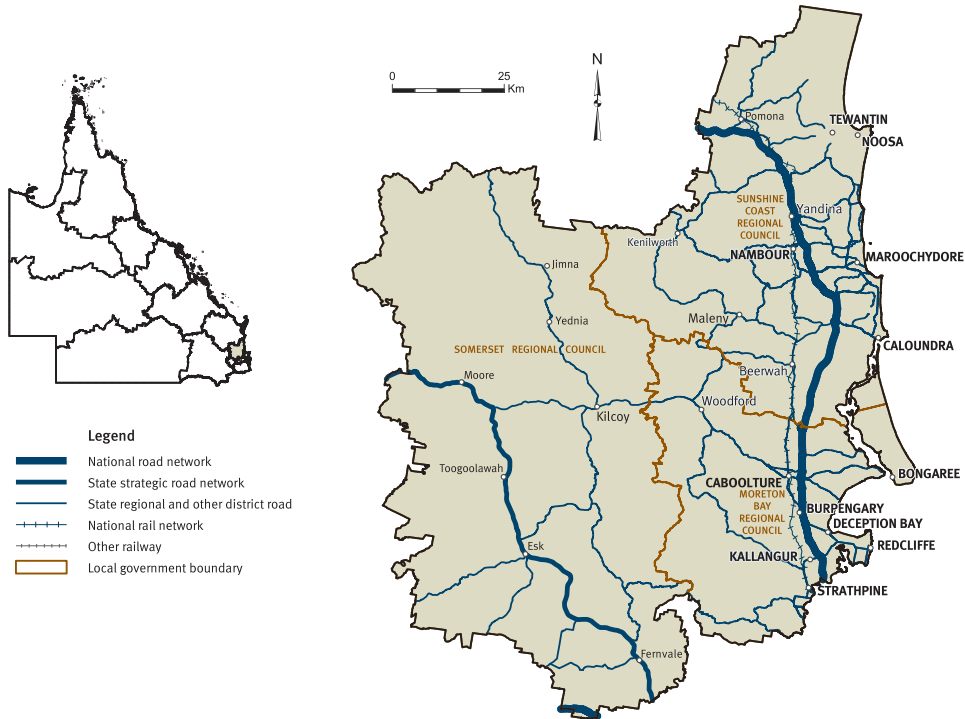


North Coast Road Facts

2010-11



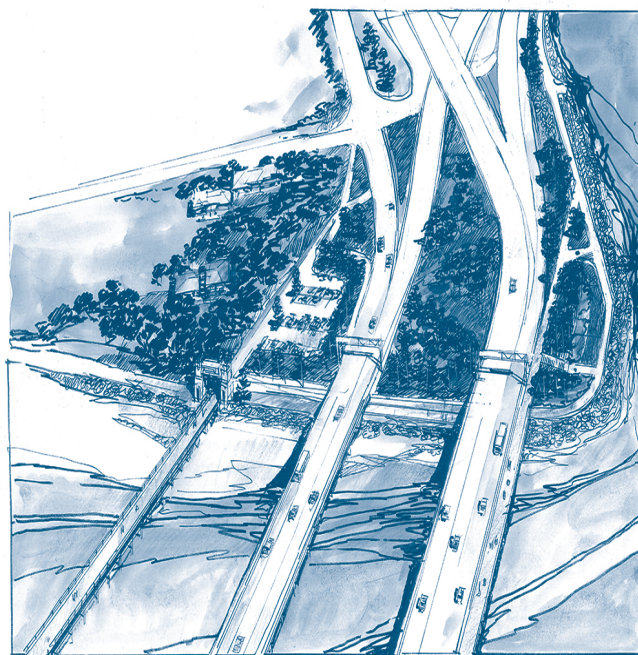
Area profile

- Area:** 10 620km², extending along the coast from Noosa to Redcliffe, and from Caboolture to west of Esk.
- Population:** Around 666 618.
- Industries:** Tourism, agriculture, forestry, fishing, dairying, retail.

Connecting North Coast

Transport and Main Roads services the state-controlled road network in Queensland. The department's Queensland Transport and Roads Investment Program 2010-11 to 2013-14, outlines what the department is doing in the North Coast Region of Queensland, now and in the future. The department's Sunshine Coast Office and Moreton Office are the main points of contact for residents, industry and business to connect with Transport and Main Roads and learn more about what is happening in the area.

State road projects in the North Coast Region are funded by the Queensland Government and the Federal Government. In the current roads program, the Queensland Government is investing around \$221 million in the region (including over \$4.5 million in Transport Infrastructure Development Scheme projects), and the Federal Government is contributing over \$40.7 million. Developers also contribute to the roads program.



Road network

- Bruce Highway (Brisbane - Gympie)
- Warrego Highway (Ipswich - Toowoomba)
- D'Aguilar Highway (Caboolture - Yarraman)
- Brisbane Valley Highway (Ipswich - Harlin)
- Redcliffe Road
- Deception Bay Road
- Brighton - Redcliffe Road
- Clontarf - Anzac Avenue Road
- Caboolture - Bribie Island Road
- Beerburrum Road
- Caboolture - Beachmere Road
- Nambour - Bli Bli Road
- Caloundra Road
- David Low Way
- Maroochydore - Mooloolaba Road
- Mooloolaba Road
- Maroochydore Road
- Yandina - Coolum Road
- Eumundi - Noosa Road
- Kin Kin Road
- Cooroy - Noosa Road
- Emu Mountain Road
- Cooroy Connection Road
- Sunshine Motorway (Tanawha - Peregian)
- Caloundra-Mooloolaba Road
- Kawana Way
- Nicklin Way
- Brisbane - Woodford Road
- Samford - Mt. Glorious Road
- South Pine Road
- Esk - Kilcoy Road
- Burpengary - Caboolture Road
- Samford Road
- Wivenhoe - Somerset Road
- Coominya Connection Road
- Forest Hill - Fernvale Road
- Esk - Hampton Road
- Kenilworth - Brooloo Road
- Eumundi - Kenilworth Road
- Kenilworth - Skyring Creek Road
- Nambour Connection Road
- Glasshouse Mountains Road
- Steve Irwin Way
- Kilcoy - Murgon Road
- Kilcoy - Beerwah Road
- Maleny - Stanley River Road
- Landsborough - Maleny Road
- Maleny - Kenilworth Road
- Nambour - Mapleton Road
- Maleny - Montville Road
- Woombye - Montville Road
- Montville - Mapleton Road
- Everton Park - Albany Creek Road
- Burpengary Service Road
- Linkfield Connection Road
- Pumicestone Road
- Yandina - Bli Bli Road
- Pomona Connection Road
- Boreen Road
- Boreen Point - Tewantin Road
- Mount Glorious Road
- Strathpine - Samford Road
- Gatton - Esk Road
- Mooloolah Connection Road
- Obi Obi Road
- Palmwoods - Mooloolah Road
- Yandina South Connection Road
- Yandina North Connection Road
- Caboolture Connection Road

North Coast road activities

Significant achievements in 2009-10

Effective, efficient and sustainable transport system

- Completed progressive widening of the Bruce Highway through the federally-funded upgrade between Uhlmann Road and Caboolture. The project was the final stage involved in providing six lanes from the Gateway Motorway to Caboolture and has improved transport efficiency, traffic flow and safety in the region, while accommodating continued growth in one of the fastest growing areas in Queensland. In addition, the north-bound lane of the Bruce Highway between Maroochydore and Andreasens Road near Nambour was upgraded.
- Completed two Maleny-Kenilworth Road projects, including realigning the Reesville Road intersection, replacing the timber bridge over Fritz Gully with a new concrete structure and widening and reconstructing the road at both locations to improve pavement strength and durability.
- Commenced work on the duplication of Steve Irwin Way between Landsborough and the Bruce Highway. This project is expected to improve safety for road users, reduce congestion and cater for future traffic growth. It will increase the road's capacity and improve flood immunity and safety for road users.

- Continued strategic planning for the Multi Modal Transport Corridor from Caloundra Road to the Sunshine Motorway, including a rigorous assessment of the section between Parrearra and the Mooloolah River Interchange to determine best alignment.
- Completed the upgrade of Belli Creek Crossing No 2 on Eumundi-Kenilworth Road.

Safe transport system promoting health and well-being

- The report into a fatal crash at the intersection of Nambour Connection Road and Blackall Street, released in December 2009, was independently reviewed and endorsed by traffic management expert Professor Rod Troutbeck. He recommended several traffic slowing measures be implemented and speeds monitored for six months before a decision was made on whether traffic signals would be installed at the intersection. Static signs and a new speed activated sign were installed near Blackall Street in February 2010 with monitoring to begin mid-year.
- The preferred option for the cycle link between Maroochy Bridge and David Low Way was announced in late 2009. The preferred option will provide a vital transport connection for the Pacific Paradise, Twin Waters, Mudjimba and Maroochydore communities.

King's Beach, Caloundra



Houghton Highway duplication project



- Completed asphalt overlays to substantial lengths of Brisbane-Woodford Road. Works included improving the road surface for traffic while preserving the pavement asset.
- Continued the Houghton Highway duplication project to improve travel times between the Redcliffe Peninsula and northern Brisbane. Works include completion of the new Ted Smout Memorial Bridge and attached bikeway and fishing platform.

A transport system providing access to employment, education and services

- Opened Kawana Way extension, providing a vital link between the southern section of Caloundra-Mooloolaba Road near Creekside Boulevard and Lake Kawana Boulevard at the Homemaker Centre.
- Completed duplication of Caboolture-Bribie Island Road between Aerodrome Road and Pasturage Road, easing congestion and providing future transport needs for a growing population.

Transport-related impacts on the natural, cultural and built environments are managed

- Announced three new bridge names for the Q150 project. The Six Mile Bridge on Beerburrum Road at Elimbah is now the Hammond Bridge; Belli Creek Crossing No 2 on Eumundi-Kenilworth Road is named Murrays Flat Crossing; and the East Eudlo Creek Crossing on Maroochydore Road is now the Hungerford Bridge. Eudlo Creek Crossing on Maroochydore Road retained its name because of cultural heritage significance.
- Extended for another 12 months a Memorandum of Understanding between the department and the Sunshine Coast Regional Council to help clean up graffiti and litter.



Wire rope barriers

- Released the Cycle Network Link Strategy report for the region in December 2009. The report plans for a cohesive and linked cycle network across the Sunshine Coast and Moreton Bay Regional Council areas. The department worked closely with key cycling groups to identify priority cycle links in the region including David Low Way, Caboolture-Bribie Island Road, Mooloolaba Road, Anzac Avenue, Aerodrome Road, Emu Mountain Road and Caloundra Road.
- Installed wire rope barriers on the Sunshine Motorway to prevent cross-median crashes and installed traffic management devices to various sections to improve safety.
- Completion of an independent safety review of overtaking lanes on Samford Road. The review successfully confirmed the department's safe use of stone mastic asphalt and the need for ongoing safety improvements.
- Completed safety improvements to the intersection of the Warrego Highway, Lowood-Minden Road and Tallegalla Road at Minden. The project improved safety, capacity and efficiency at this intersection.

Cost-effective transport system delivery

- Progressed planning to replace Six Mile Creek Bridge on Beerburrum Road at Elimbah with a modern structure. This project is funded as part of the Regional Bridge Renewal Program.
- Completed design for the upgrading of the Nicklin Way-Erang Street intersection. This project is expected to enhance road user safety, reduce congestion and provide for future traffic growth.

Transport system leadership

- Continued use of the state-of-the-art traffic response service on the Sunshine Coast to manage congestion. The two Traffic Response Units provide quick clearance and traffic control for road hazards such as crash sites.

Contemporary and progressive people, processes and systems

- Opened the new Department of Transport and Main Roads and Queensland Police Service office on the Sunshine Coast. The new departmental regional office incorporates the new Traffic Management Centre which boasts state-of-the-art technology and surveillance designed to monitor traffic flows and alleviate problems when they occur. A new office was also opened at Caboolture to service the region's growing needs.



- Installed six Variable Message Signs along the Bruce Highway at Black Mountain, Federal, Coles Creek, Tuchekoi, Traveston and Kybong. The signs are being trialled and are linked to roadway sensors that can measure the speed of approaching vehicles and display specific messages targeting speeding motorists.

Key deliverables in 2010-11 and 2011-12

Effective, efficient and sustainable transport system

- Complete construction and commissioning of the duplication of Steve Irwin Way between Landsborough and the Bruce Highway.
- Finalise strategic planning for the Multi Modal Transport Corridor from Caloundra Road to the Sunshine Motorway.

- Commence work on the upgrade of Burpengary-Caboolture Road (Morayfield Road) between the Bruce Highway and Gaffield Street. Currently, the section of road from the Uhlmann Road roundabout to Gaffield Street is a two-lane road that experiences excessive congestion during peak periods.
- Begin work on a federally-funded program to improve the Bruce Highway between Caboolture and Curra. Works will involve six projects including median treatment, vegetation clearing and intersection planning.

Safe transport system promoting health and well-being

- Monitor impacts of traffic slowing measures installed at Nambour Connection Road-Blackall Street intersection at Woombye to determine whether traffic signals can be safely installed. Static signs, a new speed-activated sign and improved lighting were among changes made from recommendations in an independently reviewed report into a fatal crash at the site. If traffic is slowed to an acceptable speed, traffic signals will be installed.
- Continue implementation of the Cycle Network Link Strategy report. The report plans for a cohesive and linked cycle network across the Sunshine Coast and Moreton Bay Regional Council areas. The department worked closely with key cycling groups to identify priority cycle links in the region including David Low Way, Caboolture-Bribie Island Road, Mooloolaba Road, Anzac Avenue, Aerodrome Road, Emu Mountain Road and Caloundra Road.



Earthworks underway on Bruce Highway upgrade, Cooroy to Curra

North Coast Road Facts

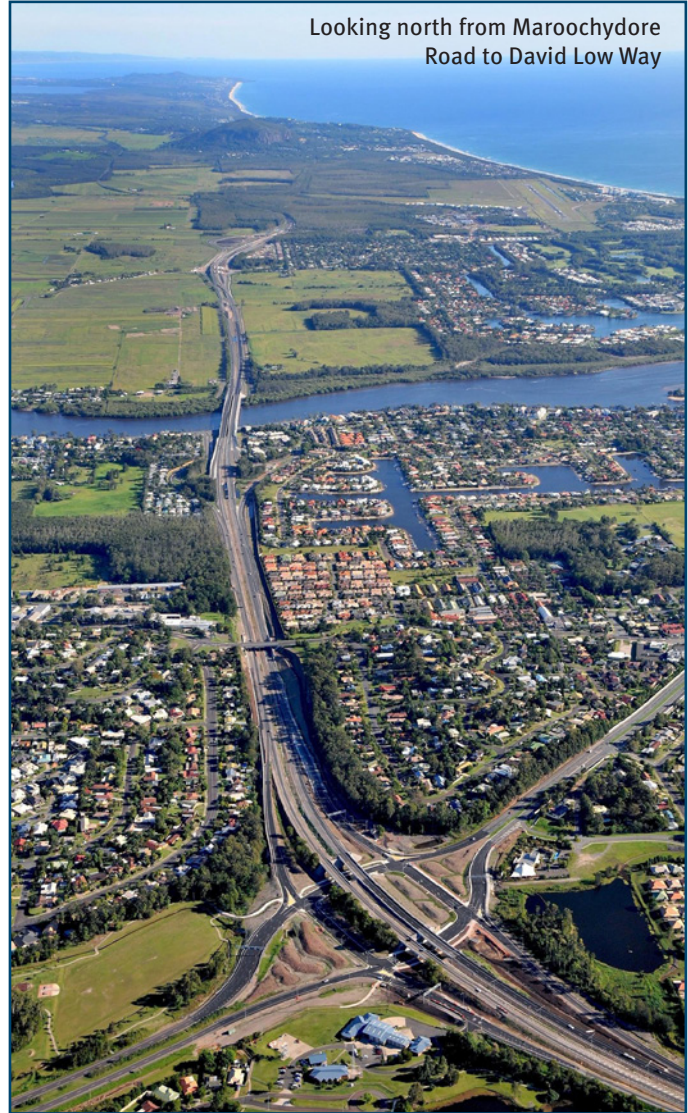
- Construct the cycle link between Maroochy Bridge and David Low Way, providing a vital transport connection for Pacific Paradise, Twin Waters, Mudjimba and Maroochydoore communities.
- Deliver projects through the Safer Roads Sooner program, including improving intersections at Caboolture-Bribie Island Road and on the D'Aguilar Highway, and sealing the shoulders of Wivenhoe-Somerset Road. These projects are expected to enhance road user safety, reduce congestion and provide for future traffic growth.

Cost-effective transport system delivery

- Replace Six Mile Creek Bridge on Beerburum Road at Elimbah with a modern structure. This project is funded as part of the Regional Bridge Renewal Program.
- Continue the Houghton Highway duplication project, improving travel times between the Redcliffe Peninsula and northern Brisbane. Future works include refurbishment and asphalt surfacing of the existing Houghton Highway Bridge, demolition of the existing Hornibrook Highway Bridge, and construction of a replica section of the Hornibrook Highway Bridge with attached fishing platform at Hays Inlet.

A transport system providing access to employment, education and services

- Complete the Queensland Government study into the future needs of Nambour Connection Road.



Looking north from Maroochydoore Road to David Low Way



Main Beach, Noosa Heads

Transport-related impacts on the natural, cultural and built environments are managed

- Continue North Coast Region's joint agreement with the Sunshine Coast Regional Council for another 12 months to clean up graffiti and litter.
- Maintain North Coast Region's commitment to managing its road network in a manner that optimises environmental outcomes for natural, human and built environments.
- Continue working with other relevant departments and traditional landowners to ensure all necessary environmental approvals are in place.
- Install fauna fencing under the South East Queensland Koala Retrofit Program. This program will upgrade or install fauna movement structures at strategic locations on the state-controlled road network to reduce native fauna deaths on roads.

Transport system leadership

- Continue use of the state-of-the-art traffic response service on the Sunshine Coast to manage congestion. The two Traffic Response Units provide quick clearance and traffic control for road hazards such as crash sites.
- Progress Queensland Government area studies of the region's road network to identify future traffic needs and priorities in one of the fastest growing regions in the state.

Contemporary and progressive people, processes and systems

- Continue to monitor the success of six Variable Message Signs along the Bruce Highway at Black Mountain, Federal, Coles Creek, Tuchekoi, Traveston and Kybong. The signs are linked to roadway sensors that can measure the speed of approaching vehicles and display specific messages targetting speeding motorists.



Major challenges for North Coast

- Maintaining and managing an ageing road network in rural and fast-growing regional communities.
- Continuing to work in partnership with local government to develop and deliver the Transport Infrastructure Development Scheme.
- Targeting the reduction of accident-prone areas through the Safer Roads Sooner program.



How to find out more

To find out more, the department's website has up-to-date information on current and future projects, roadworks and road closures, web cameras and how communities and interested citizens can be involved in community engagement activities.

Please visit www.tmr.qld.gov.au or contact a local Transport and Main Roads office.

Sunshine Coast Office +61 7 5313 8700
PO Box 1600
Sunshine Plaza Post Shop
Maroochydore Qld 4558
sunshinecoast.office@tmr.qld.gov.au

Moreton Office +61 7 5316 0200
PO Box 1081
Caboolture Qld 4510
moreton.office@tmr.qld.gov.au