



CONSTRUCTION OF THE NEW TED SMOUT MEMORIAL BRIDGE AT CLONTARF IN PROGRESS

Houghton Highway Duplication Project

Construction Update

The Department of Transport and Main Roads is constructing the landmark \$315 million Houghton Highway Duplication Project, which involves construction of a new 2.7km road, cycle and pedestrian bridge between Brisbane and Redcliffe.

Current Works

- Construction of the new Ted Smout Memorial Bridge has now reached the Clontarf foreshore.
- The temporary / falsework bridge that was used as a platform to construct the new bridge has now been dismantled. The cranes that were used on the temporary platform have also been dismantled and removed.
- The bridge is being progressively fitted with concrete barriers, guard rails, electrical conduit, concrete footpath and asphalt over the completed spans.
- Construction of the Pine River Fishing Platform in Bramble Bay is continuing. The fishing platform is being built on the seaward side of the Ted Smout Memorial Bridge, next to the main channel into the Pine River. A wheelchair-accessible walkway will connect the platform to a shared pedestrian / cycle path that runs along the length of the new bridge.
- Construction of new pedestrian / cycle underpasses is in progress at both ends of the Houghton Highway. The underpasses will run beneath the existing Houghton Highway bridge and the new Ted Smout Memorial Bridge.
- The underpass at Clontarf is being prepared for pedestrian use and will be opened to pedestrians in March. Pedestrians will no longer be able to use the existing paths through the carpark. This will enable work to start on the restoration of the historic northern portal of the Hornibrook bridge.
- Development of the northern embankment of the new Ted Smout Memorial Bridge is in progress at Clontarf Point. Works underway in this area include construction of foreshore landscape features and the approach roads to the new bridge.
- Roadworks improvements for the new southern approaches to the Houghton Highway are continuing on Deagon Deviation and the Hornibrook Highway at Brighton.

- Roadworks for the new northern approaches to the Houghton Highway are also continuing along Elizabeth Avenue, Hornibrook Esplanade, and on the new bridge embankment at Clontarf Point.
- Work is underway on the construction of a temporary / falsework bridge beside the Old Hornibrook Bridge, at Clontarf. This will be used to facilitate construction of the new Hays Inlet Fishing Platform. Works are also in place to provide some strengthening / support to the old heritage listed bridge portals.
- Construction has also begun on two ITS buildings, at each end of the existing Houghton highway bridge. These two buildings will become the control centre for the new electronic signs for each bridge.

Timing

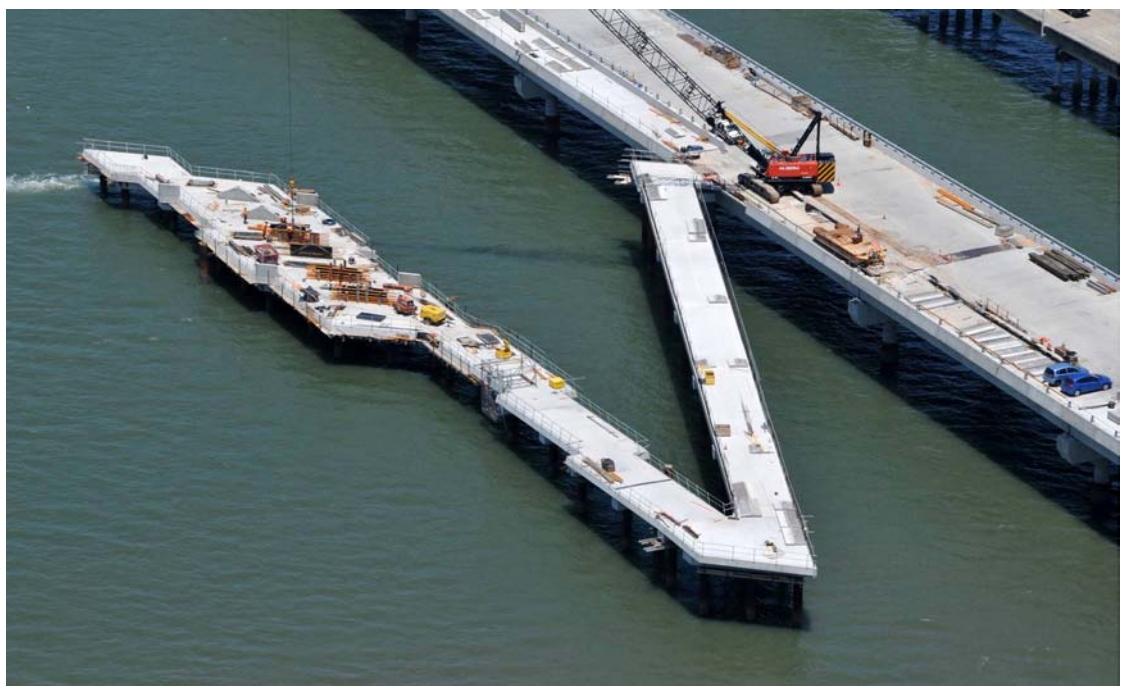
- The temporary bridge that was used as a platform to construct the Ted Smout Bridge has now being dismantled, and the cranes have also been removed. Part of this temporary bridge is being relocated to Hays Inlet, to assist with the construction of the new fishing platform.
- The remaining works for the new bridge - concrete barriers, traffic rails, footpaths, expansion joint & asphalt works are expected to be complete by mid 2010 (weather & construction impacts permitting).

- Refurbishing of the existing Houghton Highway bridge will commence once the new bridge has been opened to traffic.
- Roadworks for the new southern and northern approaches to the Houghton Highway will continue at Brighton and Clontarf.

Construction impacts

- Traffic is being redirected around roadworks on Hornibrook Esplanade and Elizabeth Avenue, near the northern end of the Houghton Highway at Clontarf. At least one lane in each direction will remain open at all times while these roadworks are in progress.
- Traffic is being redirected around roadworks on the Hornibrook Highway at Brighton, between Deagon Deviation and Twenty-fifth Avenue. Temporary partial traffic lane closures will occur in this area from time-to-time, and short delays should be expected.
- Traffic will be redirected from time-to-time around roadworks on Deagon Deviation at Brighton. At least one lane in each direction will remain open at all times while these roadworks are in progress. Two lanes will remain open inbound during morning peak periods and two lanes outbound during afternoon peak periods.

CONSTRUCTION OF THE PINE RIVER FISHING PLATFORM IN PROGRESS



- Please take care when travelling around the roadworks. Speed limits may be reduced in some areas. All traffic changes will be signed, and traffic controllers will be in place to direct motorists, pedestrians and cyclists as required. Detour paths around roadworks will also be provided for pedestrians and cyclists as required.
- Access to the Brighton and Clontarf carparks of the old Hornibrook Bridge is closed to all traffic. Alternative parking opportunities may be available at Brighton Park and along Hornibrook Esplanade. Fenced-off worksites have been established in sections of both carparks. Access to these areas is closed to the public. Signed detour paths are provided for pedestrians and cyclists. The pedestrian underpass beneath the Clontarf end of the existing Houghton Highway bridge will be reopened to the public in March.
- Access beneath the Brighton end of the existing Houghton Highway bridge is closed to the public. Signed detour paths are provided for pedestrians / cyclists.
- Fenced-off worksites have been established in sections of Decker Park at Brighton, and along the Brighton and Clontarf Point foreshores. Access to these areas is closed to the public. Signed detour paths are provided for pedestrians / cyclists. Traffic control will be provided where vehicles are required to cross pedestrian footpaths in these areas from time-to-time.
- Access for swimmers, boats and personal watercraft is restricted around all Houghton Highway construction sites in Bramble Bay.
- Construction involves the use of heavy machinery / tools (e.g. pile driving hammers, excavators and trucks) which may cause increased noise, dust and vibration at times around work sites. The project team will conduct regular monitoring of these impacts to ensure that they are within prescribed limits.
- Marine traffic navigating the main channel into the Pine River and through Hays Inlet will be required to pass through / under bridge construction works in progress in these areas. Changes to the local speed and navigation conditions have been implemented, and are signed. Changes to local marine access and speed / navigation conditions are detailed in Notices to Mariners issued by the Harbourmaster. These are posted on the Maritime Safety Queensland website – www.msq.qld.gov.au

Safety

Please take care when travelling through the construction site. Observe any changed speed zones and be aware of the workforce delivering this project.

Please slow down - roadwork safety is your responsibility too.

We thank you for your interest in this project.

Find out more

Website	www.tmr.qld.gov.au (search projects for Houghton Highway)
Phone	1800 626 976 (business hours)
Email	houghtonhighway@tmr.qld.gov.au
Urgent/After Hours Project Manager	0418 785 370
Site Office	07 3269 0109 during business hours

Call 13 19 40 for information on road closures or to report traffic incidents and road safety issues.

Did you know...?

The safety of road users is one of the Department of Transport and Main Roads' highest priorities. To support this, the state government has committed \$2 billion towards projects to ensure state-controlled roads are safer and more efficient for all road users.

Find out more on our website.