

# Ipswich Motorway Upgrade: Wacol to Darra

The Department of Main Roads has established SAFELink Alliance to deliver the Ipswich Motorway Upgrade from Wacol to Darra. Construction is underway and is due for completion in December 2010.

The SAFELink Alliance consists of five partners including Main Roads, Leighton Contractors, BMD Constructions, Maunsell Australia and Arup.

## Why upgrade the Ipswich Motorway?

South east Queensland's population is projected to grow by over one million people in the next two decades. The Australian and Queensland Governments have agreed on the way forward for increasing the capacity of the Ipswich Motorway to meet projected traffic demands in this growth corridor. It's also important that the motorway serve its function in moving freight efficiently from interstate and other parts of Queensland to Brisbane and the port of Fisherman Island.



Traffic demands are increasing in the Western Corridor.

Key benefits of the Ipswich Motorway upgrade between Wacol and Darra include:

- » improved safety for motorists, pedestrians and cyclists
- » increased reliability and better travel times
- » improved and more consistent traffic flow
- » improved connectivity between the Ipswich Motorway and Centenary Highway
- » new pedestrian and cyclist paths
- » provision for a future upgrade from six to eight lanes.



# Ipswich Motorway Upgrade Wacol to Darra

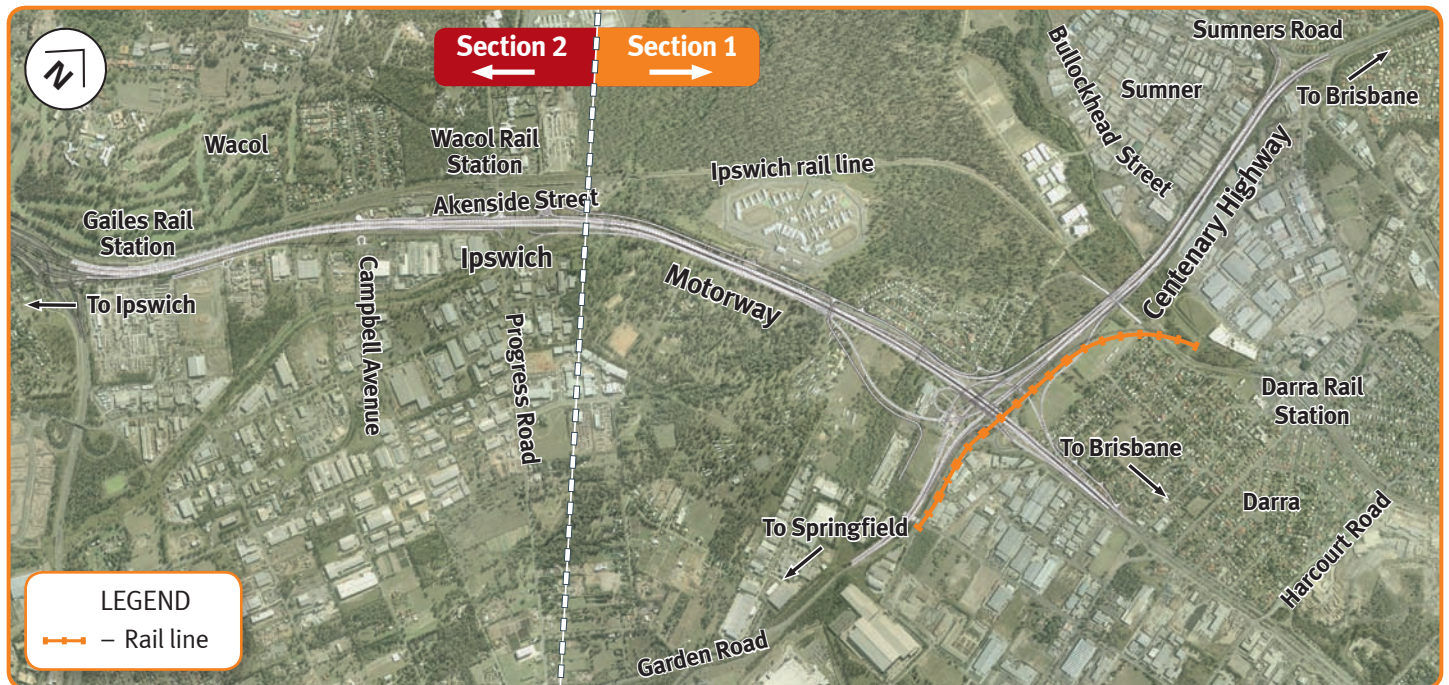
## What will the upgrade include?

For construction purposes the project has been divided into two sections. Construction of the first section, east of Progress Road in Wacol (Jervis Street, Darra to Sandy Creek, Wacol) began in March 2008.

Prior to the start of section two works, west of progress road (Sandy Creek, Wacol to the Ipswich Logan Motorway Interchange, Gailes) Main Roads will engage the community about future traffic impacts for this section.

The upgrade will include:

- » widening the Ipswich Motorway from the Logan Motorway at Gailes to Jervis Street at Darra (five kilometres) from four to six lanes, with provision for eight lanes in the future
- » major upgrade of the Centenary Highway Interchange
- » new bridges over Bullockhead and Sandy Creeks
- » new bridges over the Ipswich rail line
- » new pedestrian and cyclist paths
- » removal of motorway access and exit points at Campbell Avenue and Akenside Street at Wacol, Bakery Road and Kelliher Road at Darra and Bullockhead Street at Sumner, to improve safety and traffic flow
- » earthworks and bridgeworks for a new rail line from Darra to Springfield passing through the new Centenary Highway Interchange.



This map shows proposed improvements to the Ipswich Motorway between Wacol and Darra.

## Contact us

Community Engagement Team

### Phone

1800 605 410\*

\*Higher rates apply from mobile phones and pay phones. If calling from outside of Queensland, STD rates will apply.

### E-mail

wacol2darra@mainroads.qld.gov.au

### Post

Ipswich Motorway Upgrade Wacol to Darra  
Reply Paid, PO Box 942  
Sumner Park BC QLD 4074  
(no stamp required)

### Website

[www.mainroads.qld.gov.au/wacol2darra](http://www.mainroads.qld.gov.au/wacol2darra)

### SMS updates\*

[www.wacol2darra.com.au](http://www.wacol2darra.com.au)

\*Visit the website to receive free project updates direct to your mobile phone.

For other Western Corridor transport projects Phone 1800 013 189

**Please remember that safety around roadworks is a two-way street.  
We ask that you drive carefully and responsibly during these construction works.**