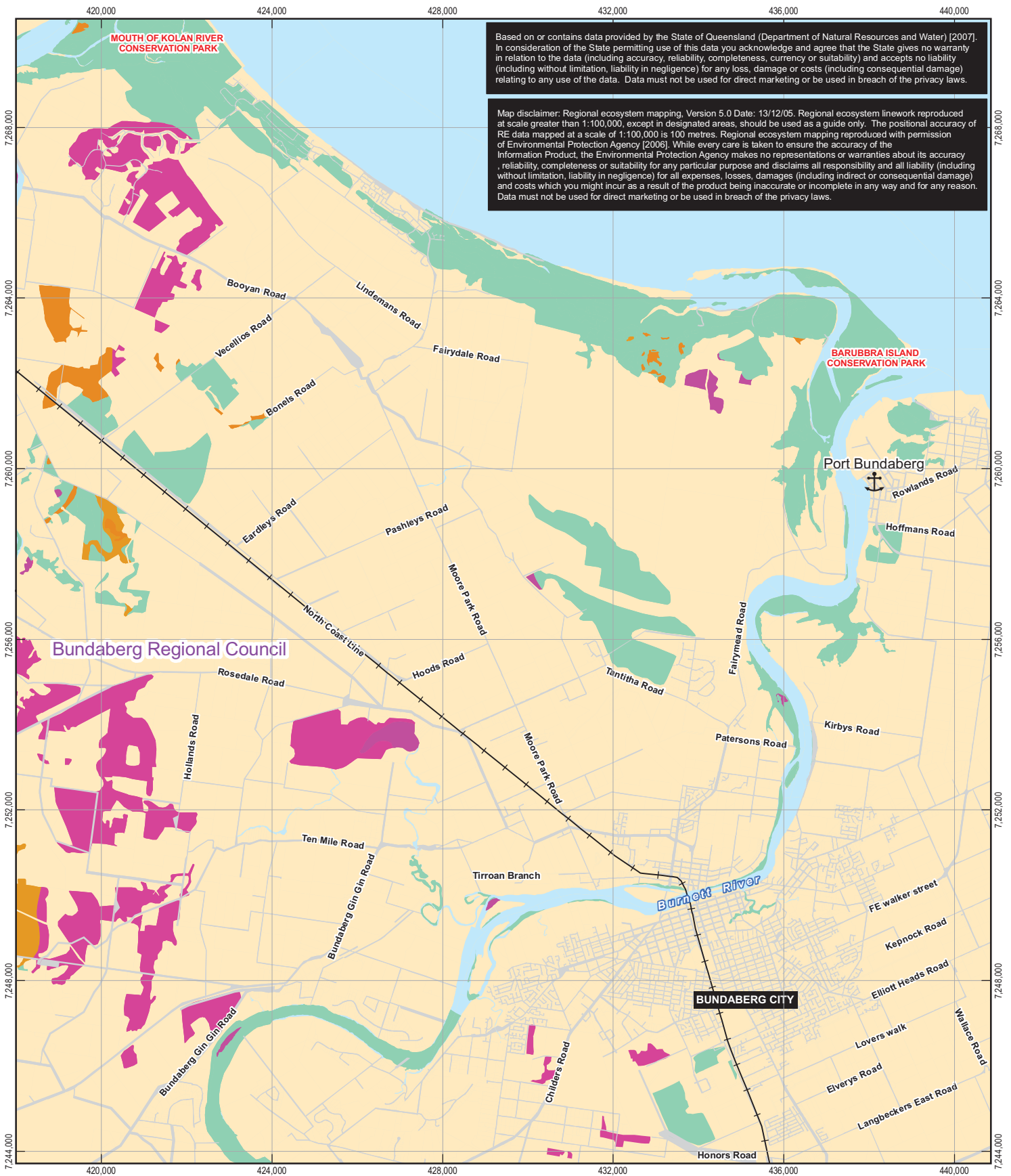


Appendix C

Individual Constraints and Opportunity Maps

- Regional Ecosystems
- Wetland Mapping and Classification
- Essential Habitat
- Potential Acid Sulfate Soils
- Slope derived from Contours
- Groundwater Bore Hole Locations
- Flood Inundation Levels
- Hydrology
- Soil Types
- Salinity Hazard
- Extractive Resource Areas
- Mining Tenure
- Lot Boundaries
- Land Tenure
- Lot Size
- Good Quality Agricultural Land
- Local Area Plan - Zoning
- Transport / Utilities



Based on or contains data provided by the State of Queensland (Department of Natural Resources and Water) [2007]. In consideration of the State permitting use of this data you acknowledge and agree that the State gives no warranty in relation to the data (including accuracy, reliability, completeness, currency or suitability) and accepts no liability (including without limitation, liability in negligence) for any loss, damage or costs (including consequential damage) relating to any use of the data. Data must not be used for direct marketing or be used in breach of the privacy laws.

Map disclaimer: Regional ecosystem mapping, Version 5.0 Date: 13/12/05. Regional ecosystem linework reproduced at scale greater than 1:100,000, except in designated areas, should be used as a guide only. The positional accuracy of RE data mapped at a scale of 1:100,000 is 100 metres. Regional ecosystem mapping reproduced with permission of Environmental Protection Agency [2006]. While every care is taken to ensure the accuracy of the Information Product, the Environmental Protection Agency makes no representations or warranties about its accuracy, reliability, completeness or suitability for any particular purpose and disclaims all responsibility and all liability (including without limitation, liability in negligence) for all expenses, losses, damages (including indirect or consequential damage) and costs which you might incur as a result of the product being inaccurate or incomplete in any way and for any reason. Data must not be used for direct marketing or be used in breach of the privacy laws.

LEGEND

- Port Bundaberg
- North Coast Railway Line
- Road
- Regional Ecosystem - EPA (2007)**
 - Not Of Concern
 - Endangered
 - Of Concern
 - Non-remnant / regrowth

1:120,000 (at A4)

0 1,000 2,000 3,000 4,000

Metres

Map Projection: Transverse Mercator
Horizontal Datum: Geocentric Datum of Australia
Grid: Map Grid of Australia 1994, Zone 56



Queensland Transport
Rail Link Options Study

Job Number | 41-19291
Revision | B
Date | 08 Oct 2008

Regional Ecosystems



Based on or contains data provided by the State of Queensland (Department of Natural Resources and Water) [2007]. In consideration of the State permitting use of this data you acknowledge and agree that the State gives no warranty in relation to the data (including accuracy, reliability, completeness, currency or suitability) and accepts no liability (including without limitation, liability in negligence) for any loss, damage or costs (including consequential damage) relating to any use of the data. Data must not be used for direct marketing or be used in breach of the privacy laws.

LEGEND

- Port Bundaberg
- North Coast Railway Line
- Road
- Significant Wetlands - EPA (2007)**
 - Estuarine wetlands (e.g. mangroves, saltflats and estuaries)
 - Lacustrine wetlands (e.g. lakes)
- Palustrine wetlands (e.g. vegetated swamps)
- Riparian wetlands
- Marine wetlands (e.g. open ocean)
- Subdominant Wetlands - EPA (2007)**
 - 1-50% Wetland coverage
 - 51-80% Wetland coverage

1:120,000 (at A4)

0 1,000 2,000 3,000 4,000

Metres

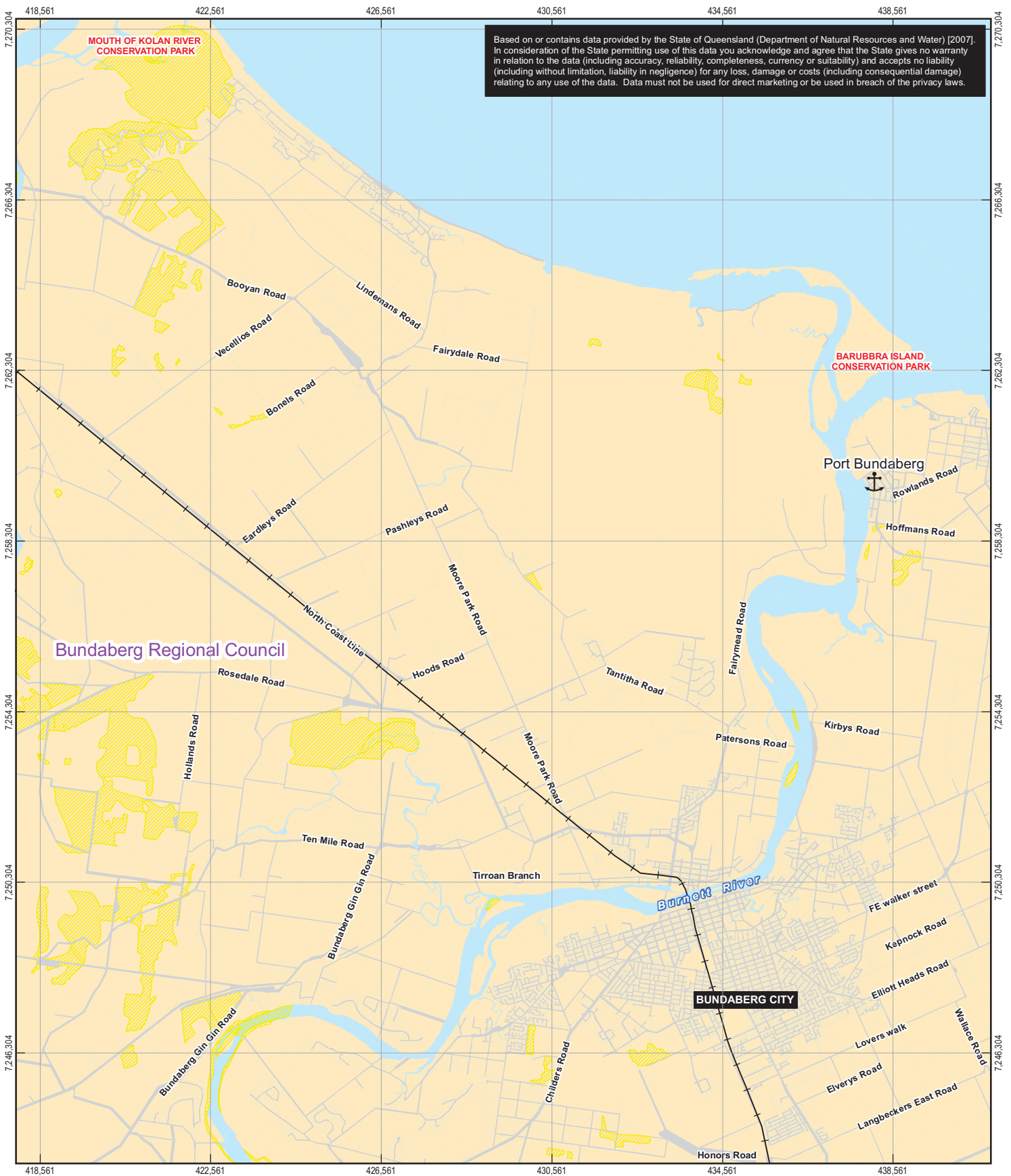
Map Projection: Transverse Mercator
Horizontal Datum: Geocentric Datum of Australia
Grid: Map Grid of Australia 1994, Zone 56



Queensland Transport
Rail Link Options Study

Job Number | 41-19291
Revision | B
Date | 06 Oct 2008

Wetlands



Based on or contains data provided by the State of Queensland (Department of Natural Resources and Water) [2007]. In consideration of the State permitting use of this data you acknowledge and agree that the State gives no warranty in relation to the data (including accuracy, reliability, completeness, currency or suitability) and accepts no liability (including without limitation, liability in negligence) for any loss, damage or costs (including consequential damage) relating to any use of the data. Data must not be used for direct marketing or be used in breach of the privacy laws.

LEGEND

- Port Bundaberg
- Road
- North Coast Railway Line
- Essential Habitat

<p>1:120,000 (at A4)</p> <p>0 930 1,860 2,790 3,720</p> <p>Metres</p> <p>Map Projection: Transverse Mercator Horizontal Datum: Geocentric Datum of Australia Grid: Map Grid of Australia 1994, Zone 56</p>		<p>CLIENTS PEOPLE PERFORMANCE</p>		<p>Queensland Transport Rail Link Options Study</p> <p>Essential Habitat</p>	<p>Job Number 41-19291 Revision B Date 06 Oct 2008</p>
--	--	---------------------------------------	--	---	--