

Gold Coast Light Rail Stage 4 (Burleigh Heads to Coolangatta)

Tugun to Coolangatta section
Concept design





LEGEND

- Light Rail Stage 3
- Light Rail Stage 4
- Proposed light rail station location*
- Future heavy rail
- Key road
- Key M1 upgrade features
- QLD-NSW Border

*Note: Station names are not final and are working titles only

Upgraded overpass at Nineteenth Avenue, new M1 service road between Tallebudgera and KP McGrath Drive, and new off-ramp to Sarawak Avenue

Burleigh Heads to Tugun Multi-modal Corridor Study - completed 2020

Tugun to Coolangatta Multi-modal Corridor Study - completed June 2022

Possible future extension to Tweed Shire (subject to Transport for NSW planning priorities)

Stage 4 of the Gold Coast Light Rail is a 13 kilometre extension south of the Light Rail Stage 3, linking Burleigh Heads to Coolangatta via the Gold Coast Airport.

The Gold Coast Light Rail system is being designed to be delivered in stages to respond to population growth. The project will connect communities with businesses, jobs, hospitals and medical facilities, education, shopping, dining, entertainment and sporting centres.

This future southern extension of the light rail will service important cultural and urban attractions including the Burleigh Heads Village Centre, Palm Beach Village Centre, Currumbin Wildlife Sanctuary, Tugun Village Centre, Southern Cross University, Gold Coast Airport and Coolangatta shopping and business precinct. It also provides the opportunity for a future light rail extension into Tweed Heads, subject to Transport for NSW planning priorities.

Through this critical infrastructure we will support the Gold Coast and its continued growth for decades to come.

The Queensland Government has committed \$3.7 million to undertake a Preliminary Business Case for Gold Coast Light Rail Stage 4 along with Gold Coast City Council's total commitment of \$2.5 million, bringing the total project funding commitment for planning of Stage 4 of the light rail to \$6.2 million.

2020

2023





Artist's impression: Lanham Street Park, Coolangatta

Joins Burleigh Heads to Tugun section Concept Plans

Proposed Light Rail Station at Boyd Street

Reconfigured intersection

Golden Four Drive

Surf Street

New intersection access to Gold Coast Highway

Reconfigured intersection

Coolangatta Road

Potential Traction Power Station location

Desalination Plant Road

BILINGA

Boyd Street

Gold Coast Airport

Tugun Skatepark

Concept only - subject to change





Proposed Light Rail Station at George Street

Pacific Parade

Gibson Street

George Street

Golden Four Drive

Coolangatta Road

Kirribin Street

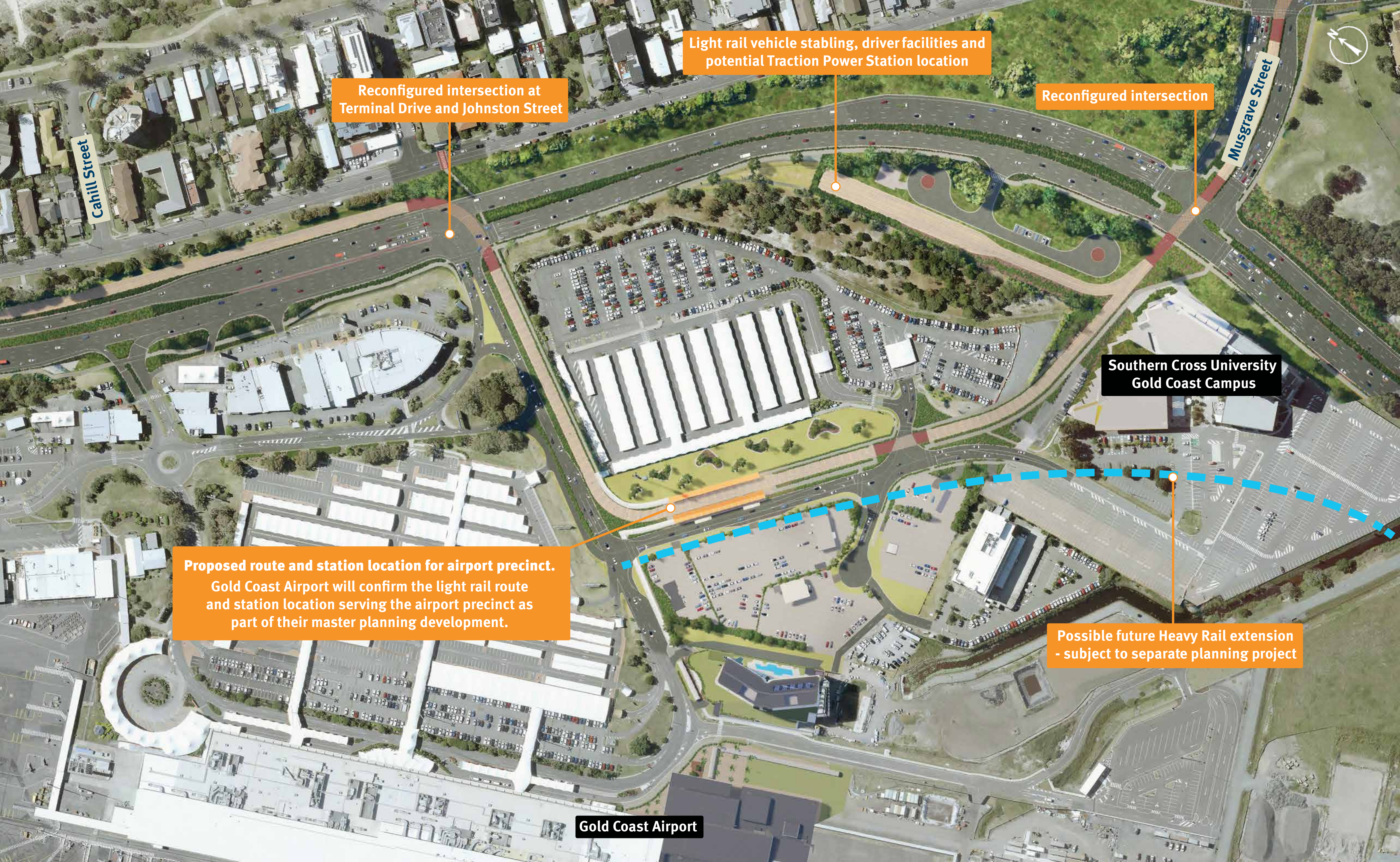
New intersection access to Gold Coast Highway

Wanda Avenue

Retain access to Gold Coast Highway

BILINGA

Concept only - subject to change



Light rail vehicle stabling, driver facilities and potential Traction Power Station location

Reconfigured intersection at Terminal Drive and Johnston Street

Reconfigured intersection

Musgrave Street

Cahill Street

Southern Cross University Gold Coast Campus

Proposed route and station location for airport precinct. Gold Coast Airport will confirm the light rail route and station location serving the airport precinct as part of their master planning development.

Possible future Heavy Rail extension - subject to separate planning project

Gold Coast Airport



Reconfigured intersection

Proposed Light Rail Station
at Musgrave Street

Reconfigured intersection

Reconfigured intersection

Reconfigured intersection

Lang Street

Pacific Parade

Golden Four Drive

Musgrave Street

Haig Street

Lord Street

Charlotte Street

Winston Street

Gold Coast Highway

Ocean Street

Appel Street

Coolangatta
State School

Concept only - subject to change



Kirra Hill

Marine Parade

COOLANGATTA

Proposed Light Rail Station at Warner Street

Potential Traction Power Station location

Griffith Street

Warner Street

Active Transport link between Miles Street and Coolangatta CBD

Reconfigured intersection

Chalk Street

Lanham Street

Miles Street

Goodwin Park

Possible extension into New South Wales, subject to planning by Transport for NSW

Proposed Light Rail Station at Miles Street

Rutledge Street

Tweed Street

Garrick Street

McLean Street

Dutton Street

Scott Street

For more information:

Freecall: 1800 316 365*

Email: gclr4@tmr.qld.gov.au

Webcall: www.tmr.qld.gov.au/gclr4

Post: Transport and Main Roads
PO Box 442, Nerang Qld 4211

**Check with your service provider for call costs*