

# Gateway UPGRADE NORTH

## Shared Pathways

FACT SHEET

January 2017

The Gateway Upgrade North project will significantly improve active transport infrastructure for pedestrians and cyclists, with a new, off-road shared pathway being constructed along the length of the project.

There will be over 15km of new and upgraded pathway constructed, including connections to existing local networks, providing a safe off-road alternative for active transport users.

### Where will the pathway be located and how can I access it?

The new pathway will extend from Nudgee to Bracken Ridge, connecting the Jim Soorley bikeway in the south, and the Barfoot Street pedestrian/cyclist underpass in the north.

The path will connect to local networks at several locations including:

- Nudgee Road interchange, Nudgee
- Bicentennial Road interchange, Boondall
- Sandgate Road, Boondall
- Muller Road and Egret Place, Taigum
- Depot Road, Deagon
- Childs Street, Carl Place, Barrett Street, Woodcroft Street, John Fisher Drive and Barfoot Street, Bracken Ridge.

These connections are shown on the map overleaf.

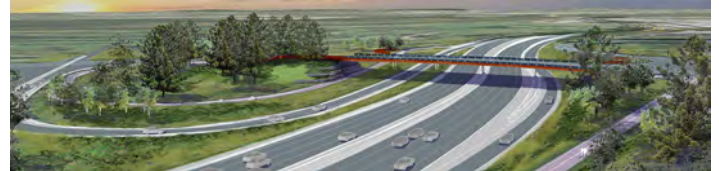
### How will pathway users be able to cross major roads and waterways?

A key element of the project's design is to enable pedestrian/cyclist connectivity along the full length of the project. This is achieved via new or upgraded underpasses, accesses and separated pathways on bridge structures, including:

- under Nudgee Road and over the Gateway Motorway at Nudgee (refer to the artist impression, above right)
- over Nundah Creek at Nudgee
- over Sandgate Road and the Shorncliffe rail line at Deagon
- under the Deagon Deviation at Sandgate.

### Will there be rest areas along the pathway?

Five covered rest areas will be provided along the new pathway. These facilities will include lighting, seating and water stations for people and pets (at two locations), providing an opportunity for pathway users to rest and enjoy the natural surrounds.



Above: Artist impression of the new Nudgee Road interchange. The new shared pathway will connect under Nudgee Road and over the Gateway Motorway via the new Nudgee Road bridge.

### During construction, will there be any access changes for pedestrians and cyclists?

During construction, some changes to the pedestrian and cyclist network will be required to ensure the safety of users. Such changes include:

- pathway closures and diversions via existing and temporary shared paths and local streets
- temporary underpasses through bridge construction sites, using modified shipping containers
- signage advising of changes, including directional instructions
- installation of temporary fencing and gravel paths
- pathways operating under traffic control.

### How do I keep up to date with pathway changes during construction?

The project website at [www.gatewayupgradenorth.com.au](http://www.gatewayupgradenorth.com.au) provides all the latest news about construction works, including any pedestrian/cyclist access changes. Check the 'Community news' tab on the website, or subscribe to receive regular email notifications about works and key changes.

Signage will also be in place and traffic controllers stationed on site to assist pathway users during any changed conditions.



Above: Artist impression of the covered rest areas that will be provided along the pathway.



Australian Government





BUILDING OUR FUTURE

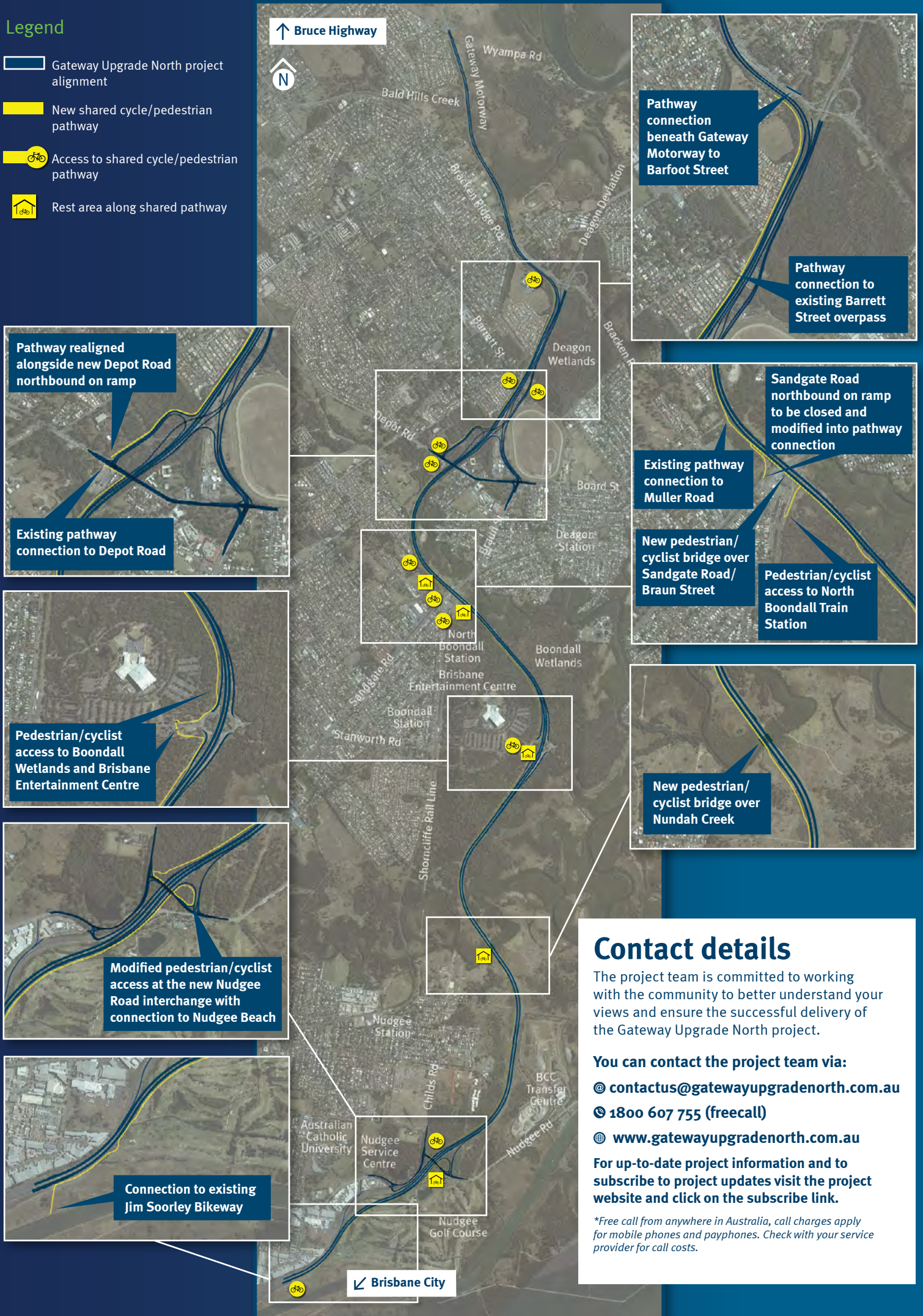
Transurban



Queensland Government

## Legend

-  Gateway Upgrade North project alignment
-  New shared cycle/pedestrian pathway
-  Access to shared cycle/pedestrian pathway
-  Rest area along shared pathway



**Pathway realigned alongside new Depot Road northbound on ramp**

**Existing pathway connection to Depot Road**

**Pedestrian/cyclist access to Boondall Wetlands and Brisbane Entertainment Centre**

**Modified pedestrian/cyclist access at the new Nudgee Road interchange with connection to Nudgee Beach**

**Connection to existing Jim Soorley Bikeway**

**Pathway connection beneath Gateway Motorway to Barfoot Street**

**Pathway connection to existing Barrett Street overpass**

**Sandgate Road northbound on ramp to be closed and modified into pathway connection**

**Existing pathway connection to Muller Road**




**New pedestrian/cyclist bridge over Sandgate Road/Braun Street**

**Pedestrian/cyclist access to North Boondall Train Station**

**New pedestrian/cyclist bridge over Nundah Creek**

## Contact details

The project team is committed to working with the community to better understand your views and ensure the successful delivery of the Gateway Upgrade North project.

- You can contact the project team via:**
-  [contactus@gatewayupgradenorth.com.au](mailto:contactus@gatewayupgradenorth.com.au)
  -  **1800 607 755 (freecall)**
  -  [www.gatewayupgradenorth.com.au](http://www.gatewayupgradenorth.com.au)

**For up-to-date project information and to subscribe to project updates visit the project website and click on the subscribe link.**

*\*Free call from anywhere in Australia, call charges apply for mobile phones and payphones. Check with your service provider for call costs.*